

Program Summary:

The Performance Pavilion is a destination and marker for Luther George Park, framing views in all directions while also acting as a shade structure and performance stage.

Program Statement:

The re-imagination of Luther George Park is the inaugural piece of Downtown Springdale Alliance's masterplan to create vibrant public spaces and plazas throughout the town. Working collaboratively with the landscape architect, the Performance Pavilion serves as a complementary element to the overall park design – inspired by the gentle rolling hills of the Ozarks surrounding Springdale, Arkansas. With support from the Walton Family Foundation's Northwest Arkansas Design Excellence Program, the revitalized park serves as a vital link connecting downtown Springdale to the Razorback Greenway, a regional trail system spanning over 40 miles across Northwest Arkansas. This popular greenway, attracting over 100,000 annual cyclists and pedestrians, now has a bucolic entry and more direct access to downtown Springdale's vivacious community. Throughout the 14-acre park, sculpted earth berms carve out dynamic spaces of discovery for play, performance, community gatherings, and quiet contemplation. The addition of over 200 native trees and select perennial grasses offer a tapestry of shade and color while creating more ideal conditions for pollinators and local wildlife to thrive. The design also amplifies the park's connection along Spring Creek with expanded plantings, seating areas, and pathways to quietly observe and extend its wetland habitats.

A295.01

Building Area: (sf)

5,200 SF Canopy

2,300 SF Stage

Cost per Square Foot:

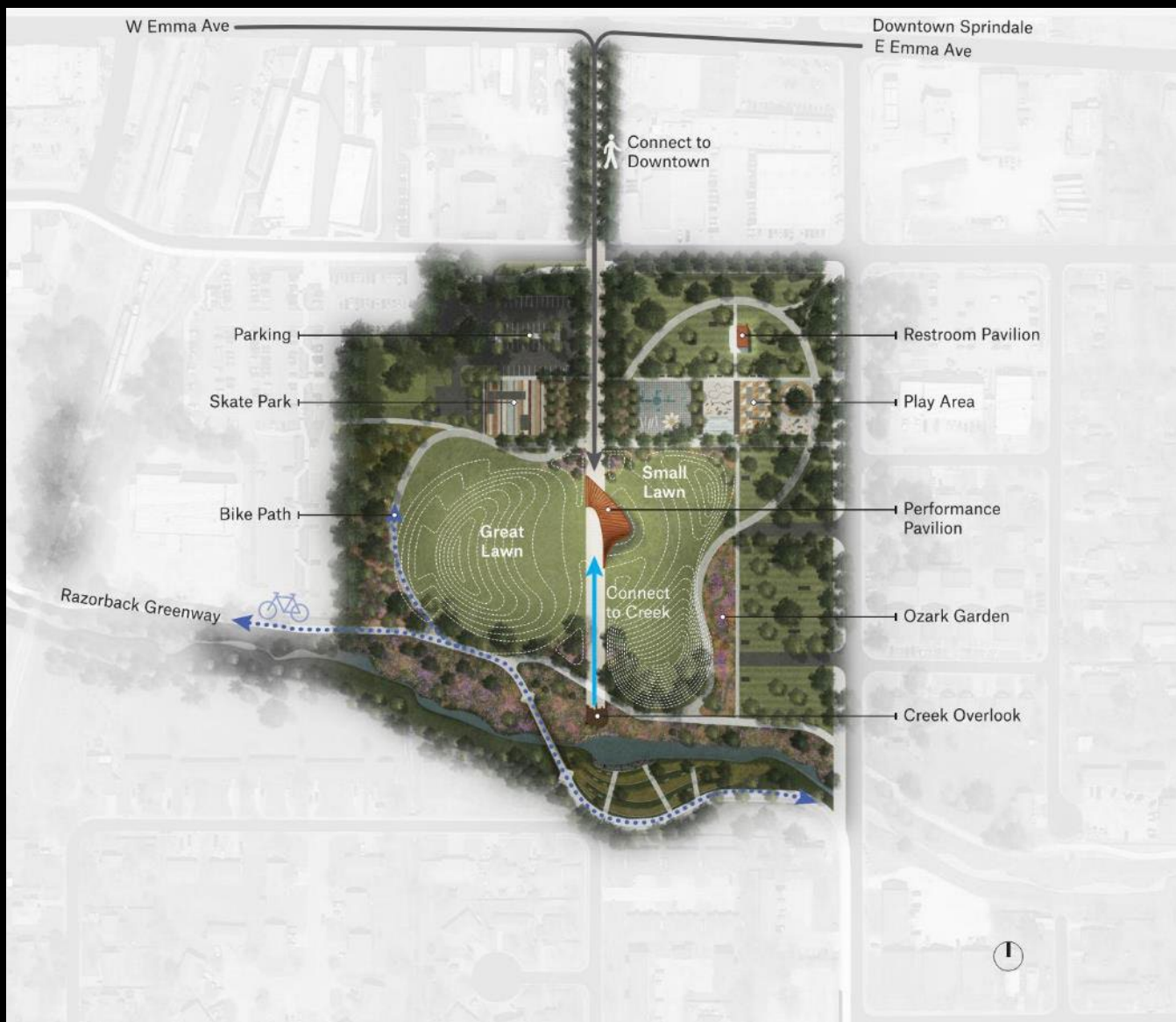
\$530 per square foot

Construction Cost

\$4,000,000

Date of Completion:

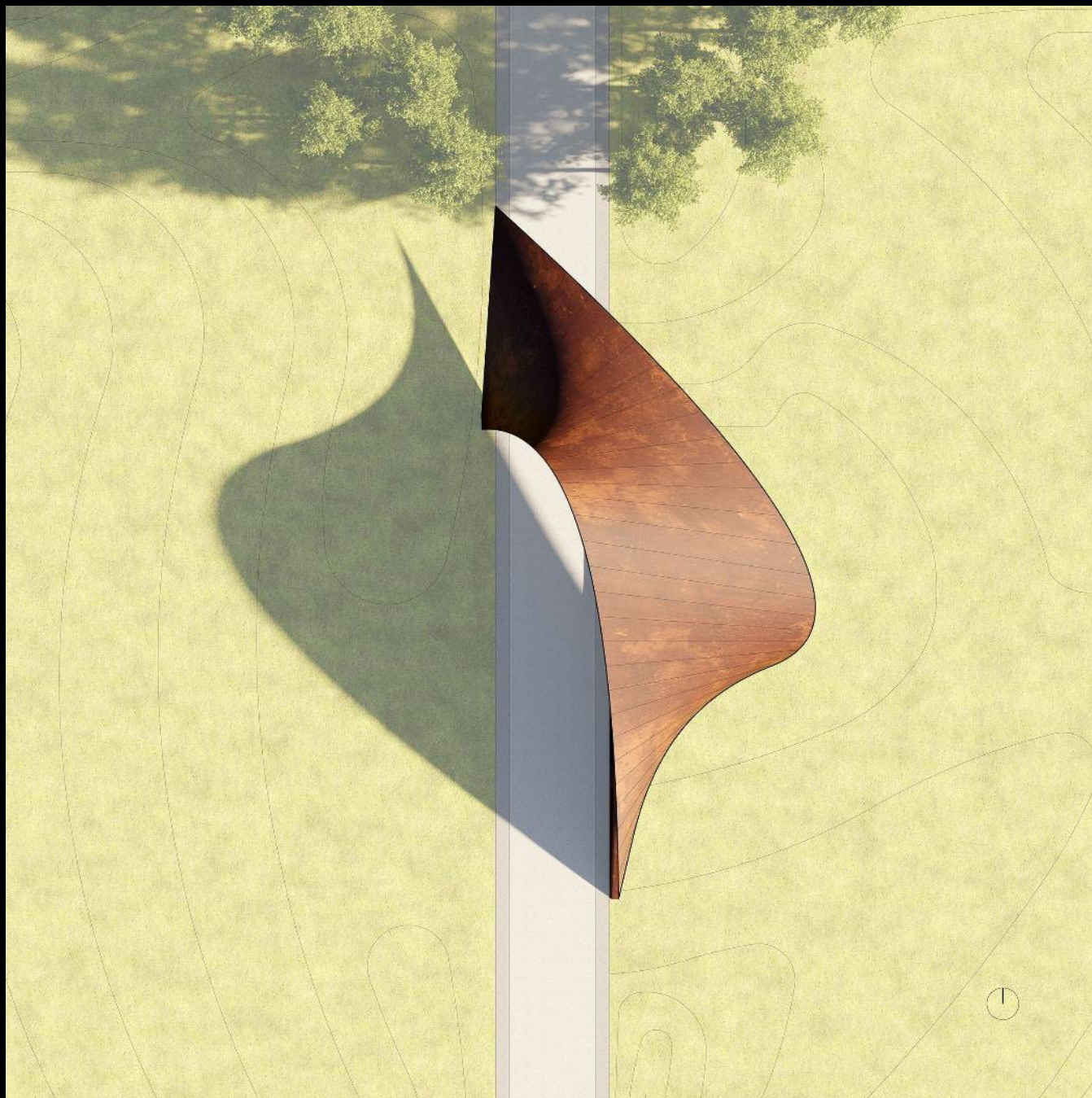
October 2024



A295.02

View from Great Lawn

Performance technologies, such as rigging coves for theatrical lighting, dedicated power for AV equipment, and perforations for optimized acoustics are integrated into the structure.



A295.03

Performance Pavilion Canopy

The plan projection of the roof was used to grade the adjacent site topography—this creates the sense that the pavilion emerged from the landscape.

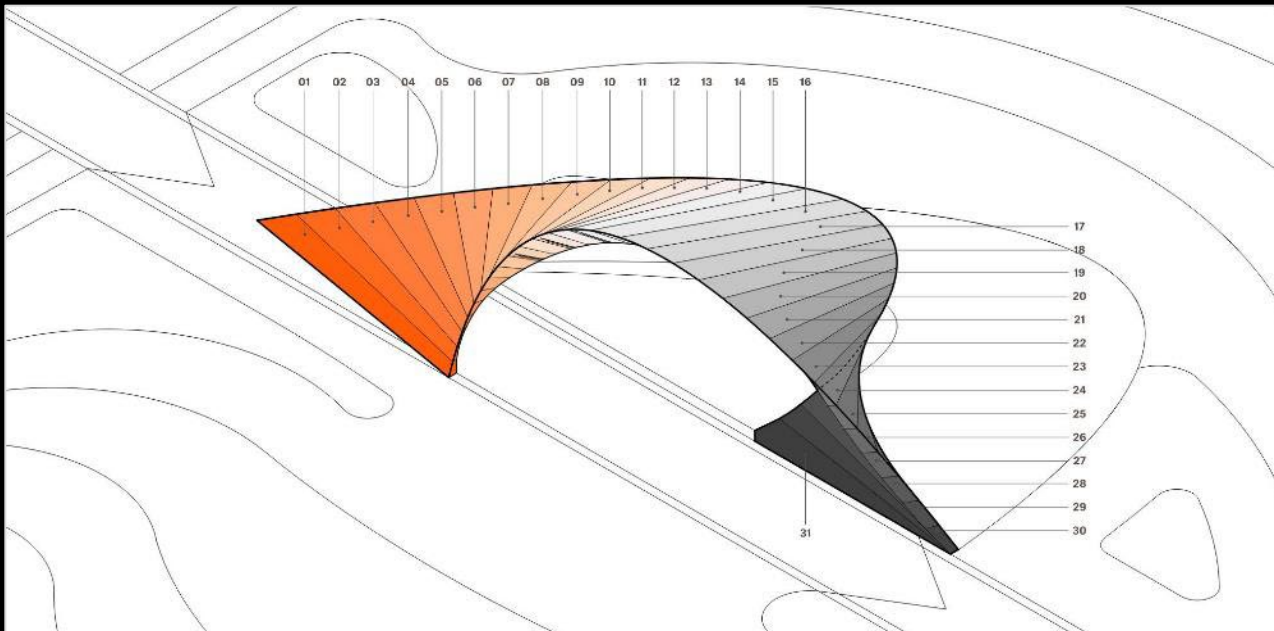
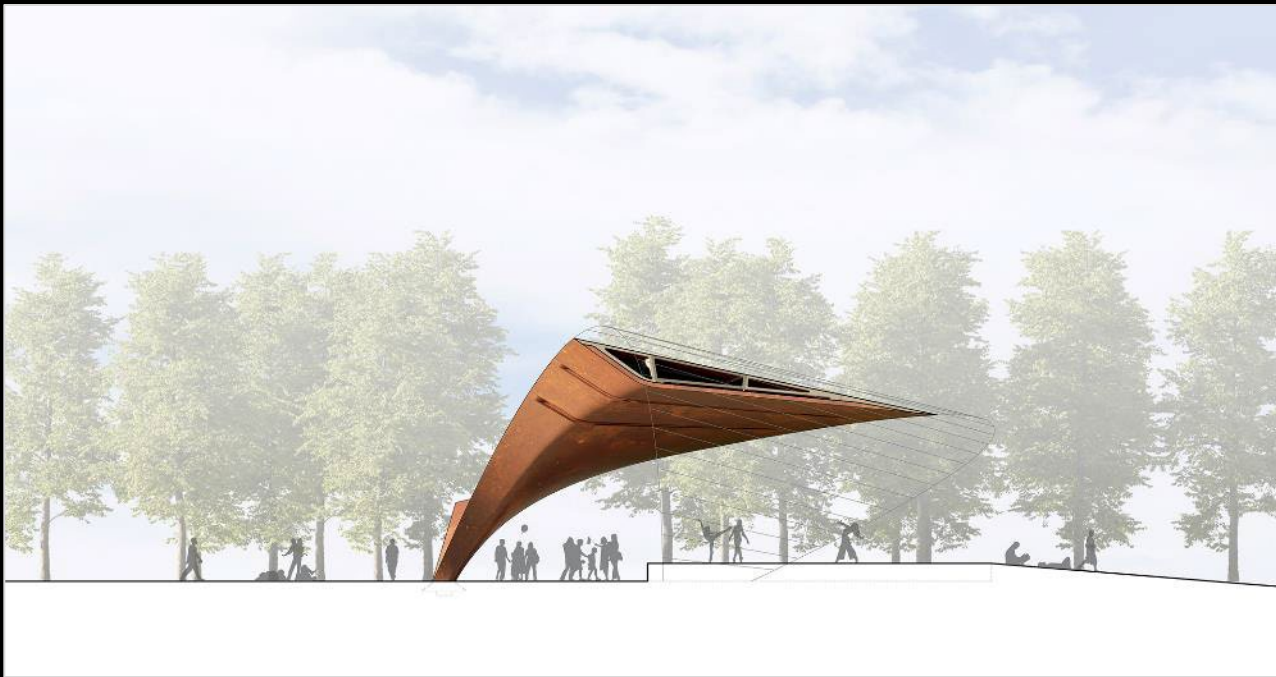
Built of weathering steel, the material recalls the ferrous soils of the site and over time will express an earthen patina.

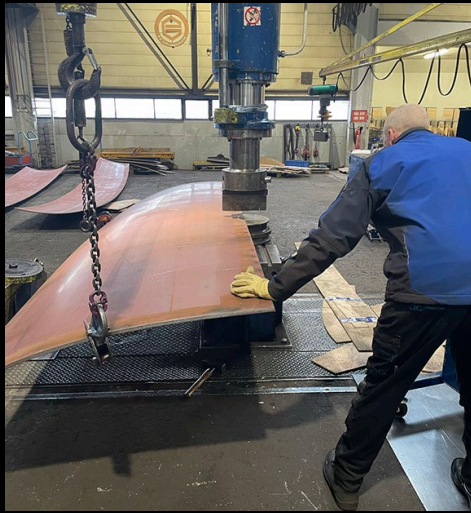
A295.04

Canopy Section

The pavilion's shell was built and assembled in sections, all produced by a world-renowned steel fabricator based in the Netherlands, with a history of ship-building.

Performance technologies, lighting and fixtures were integrated into each section for flexibility of use and efficiency of construction.



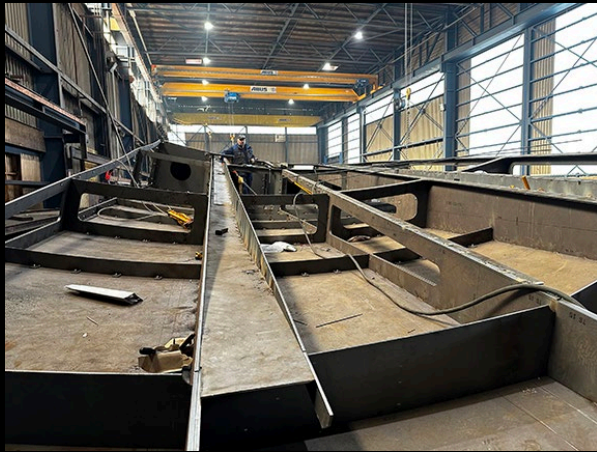


A295.05

Section Fabrication

For the canopy, each of the $\frac{1}{4}$ " – $\frac{3}{4}$ " steel plates was shaped by hand with a series of rollers and presses by a skilled fabricator – a technique derived from the shipbuilding process.

Once shaped, the plates were welded to an internal framework, dressed, and finished; making up one section piece. In total, the pavilion was comprised of thirty-one sections.





A295.06

Pavilion Installation

The sections of the canopy were shipped from the Netherlands to Arkansas in subgroups as completed. The staggered delivery allowed for sections to be installed intermittently over a period of weeks, allowing for fitment adjustments and additional finishing throughout the installation process.

The pavilion is anchored on one end by a large steel foundational section. An arching "backbone" extends from this anchor and is used to support the remaining "wing" sections.





A295.07

Aerial View

The performance pavilion draws inspiration from the rolling hills of the surrounding Ozark Mountains, a core concept in the landscape master plan.

Conceived as a fourth hill, the pavilion embraces the central axis and provides performance space on two sides—one for the Great Lawn and one for the Small Lawn.



A295.08

View from Small Lawn

When viewed from within the park, the pavilion's open qualities allow for framed views of the landscape.

The subtle arched roof line and ruled surface geometry feel like extensions of the rolling hills and paths of the landscape master plan.



A295.09

View along Pedestrian Path

The 150' span is anchored by only two points – making it appear weightless.

From every angle the pavilions form is dynamic and changing.



A295.10

View from Northeast

The pavilion has no front or back and was meant to be experienced on all sides. When fronting the Small Lawn, the pavilion feels embedded in the landscape and the roof line is much closer to the ground, changing the reading of the form.

When not hosting a performance, the pavilion is a natural destination for shade and gathering in the park.



A295.11

Weathering Steel

As it's exposed to the elements over time, the steel will develop a beautiful earth-toned patina that reflects the nuances of its unique environmental conditions.

A295.12

Site Plan

Located along the central pedestrian extension of Water Street, the pavilion's dramatic, curving form invites visitors and residents to come inside and explore.

This structure has dual functions – providing shade for daily parkgoers and a fully equipped pavilion for special performances and events of all kinds. The form allows for performances to be hosted on either side, ensuring there is no back side to the pavilion.





A295.13

Performance Pavilion at Luther George Park

"The work of (the design team) has brought a transformative public space to the people of Springdale, Arkansas – one that will encourage outdoor community, improve the health of our downtown ecosystem, increase access to world class design, and provide a venue for celebrating the special region of Northwest Arkansas that we call home for generations."

-Jill Dabbs, Executive Director of
The Downtown Springdale Alliance