

Program Summary:

This project features the replacement of an existing parking lot and outgrown single-story building with a new 150,000 SF Center for Medical Education and Wellness.

Program Statement:

The Wellness Journey: Teach, Heal, Discover and Commune

The Center for Medical Education at LSU Health Shreveport is an engine behind the next generation of health professionals in Louisiana. Designed to connect students to one another and body to mind, the building inspires active learning and collaboration. The dynamic form replaces a surface parking lot in the heart of campus to create a new gateway. Glass and metal emerge from a terracotta base, using transparency and lightness to transform the structure from bunker to beacon. This vitality matches that of the programs inside: research labs including an Emerging Viral Threats (EVT) lab, a unique classroom-in-the-round and other instructional spaces, clinical skills and simulation suites, plus a fitness center and student dining. Outside, the open and sheltered plaza and promenade offer all a warm welcome.

A-245.01

Building Area: (sf)
150,000 SF

Cost per Square Foot:
\$475

Construction Cost
\$71.5M

Date of Completion:
November 2024

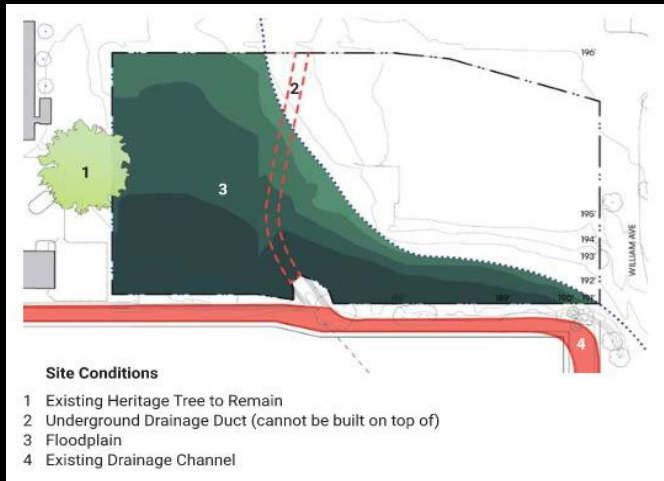
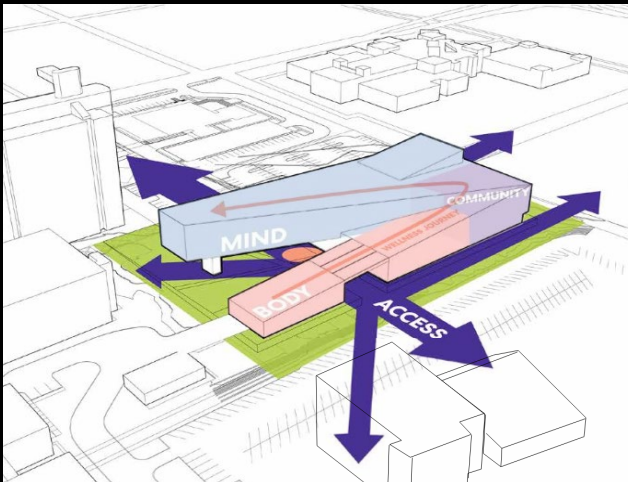
A-245.02

PROGRAM SUMMARY

The design provides a multi-layered building which forms the new heart of campus while fostering a holistic experience defined by connections between campus and community; building and nature; mind and body; existing facilities and new. The design shifts the paradigm of higher education into a health and wellness lifestyle, from nutrition, to fitness, to intellectual discovery.

Spaces Included:

- Dining Pavilion
- Outdoor Community
- Fitness Center
- Instructional Space
- Medical Simulation
- EVT Laboratory



Site Conditions

- 1 Existing Heritage Tree to Remain
- 2 Underground Drainage Duct (cannot be built on top of)
- 3 Floodplain
- 4 Existing Drainage Channel

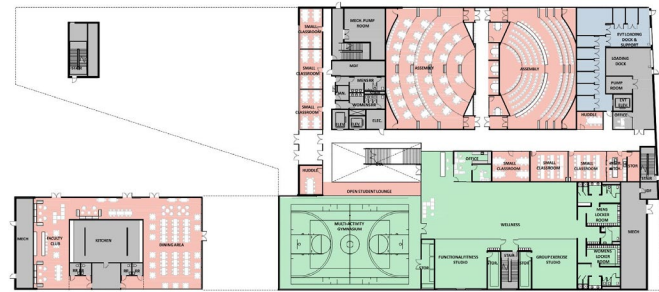
A-245.03

PLAN JOURNEY

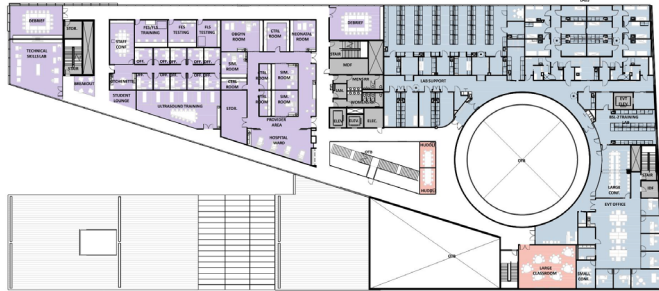
Simultaneous activities can be viewed from multiple vantage points throughout the interior space. Program spaces are linked by a network of grand stairs and floor openings contained in a central circulation zone reinforcing the building's organizational structure.

Program follows a Health and Wellness Journey that coils itself from the Dining Hall on Level 1 up through the Simulation Lab on Levels 3 and 4.

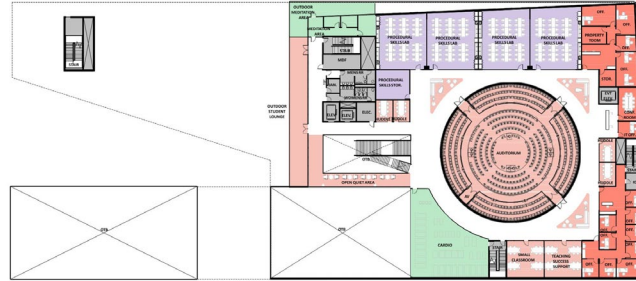
Student gathering spaces are distributed throughout all four levels to provide a constant activation of interaction.



Level 1



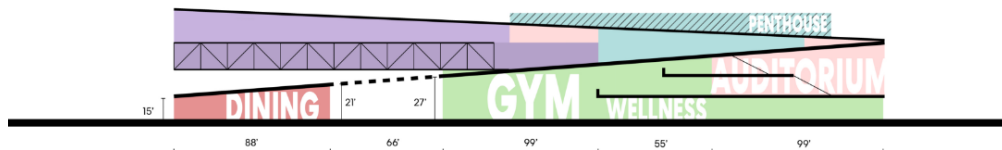
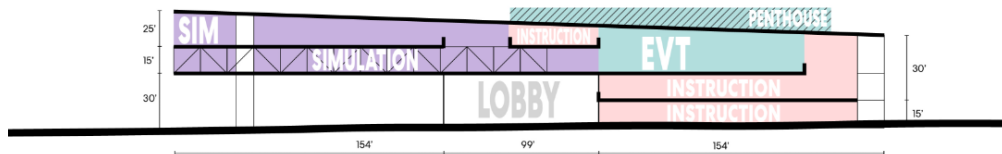
Level 3



Level 2



Level 4





A-245.04

EXTERIOR CONNECTIONS

In the absence of established typography or campus language, the University embraced the design team's vision of biophilia within timeless and traditional materials to establish its own design identity. Large expanses of curtainwall, ACM & Terracotta panels, and poured in place concrete were carefully selected to make a strong connection to the earth, bridging the gap between building and nature.

The elevated Simulation Lab and Dining Pavilion Breezeway create a bridge over existing drainage patterns and easements while creating an exterior connection to existing neighboring University facilities.



A-245.05

BRIDGING

In order to maintain drainage patterns and connectivity to existing facilities to the North and South of the new structure, various program elements were lifted up to bridge over and adapt to these conditions.

Six massive steel trusses were raised and celebrated in the final architectural design to highlight this 165' achievement. The cast concrete and steel tower serves as emergency egress from levels 3 and 4 on the West end of the building.





A-245.06

INTERIOR CONNECTIONS

Just as the building and its 115-foot pedestrian bridge acts as a campus hub to the surrounding existing buildings, staircases, elevators and elevated walkways bridge gaps within the new structure to facilitate movement between spaces.

This architectural layout promotes an accessible sense of flow and openness, maintaining visual sight lines between key areas to encourage interaction between students, faculty and guests alike.

The thoughtful design ensures that end users can navigate the facility effortlessly, fostering a cohesive environment for collaboration throughout the facility.



A-245.07

TRANSPARENCY

Learning is truly on display throughout the facility, reaching end user goals of transparency and flexibility for inter-professional collaboration between faculty and students.

Extensive use of various glazing types create the open and inviting atmosphere throughout the facility.

Form opens to function creating visual connections between every aspect of the building program.





A-245.08

STUDENT TOUCHDOWN

Pockets of open space for student use and collaboration can be found throughout the facility. These spaces are carved out to provide space for informal study, collaboration or simple relaxation in the Wellness lounge.

These various forms of Touchdown Spaces offer dynamic, accessible settings within the larger educational environment.





A-245.09

LECTURE SPACE

Lecture and learning spaces vary in type and size throughout the facility - from small 15 occupant classrooms to a large, 500 student capacity "Classroom in the Round" concept located in the second floor rotunda.

The 500 seat auditorium acts as a focal point of the building with integrated technology allowing full, 1/2 and 1/4 capacity lectures.

In all, 25,000 sf of the building is dedicated to classroom learning, spaced thoughtfully near Touchdown spaces to encourage student break-out sessions. All are equipped with the latest advancements in A/V technology, flexible seating arrangements and ample natural lighting to accommodate a full range of teaching styles.



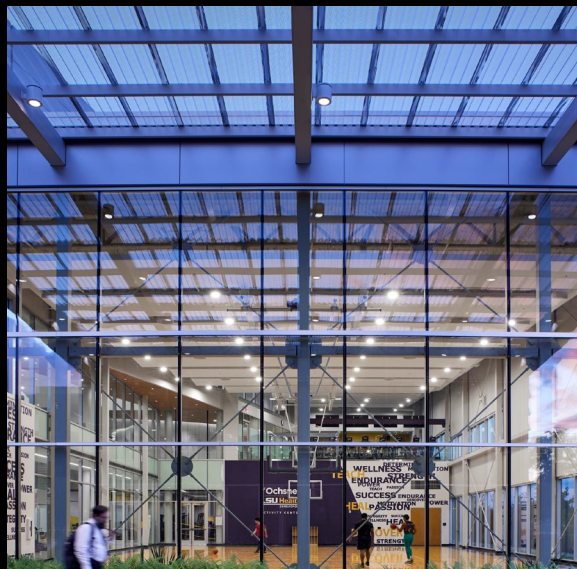


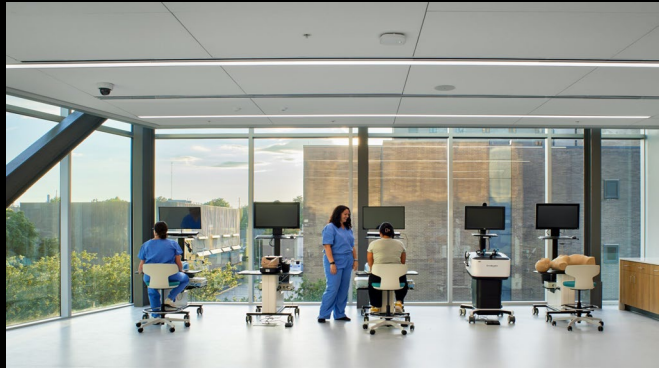
A-245.10

FITNESS CENTER

The 21,000 sf Fitness Center provides a much needed space for student health and social well being. A first for the campus, it is equipped with a full multi-function gymnasium, fully equipped cardio-loft, weight training and yoga studio. Also included are smaller therapy spaces that allow for attention to personal mental and physical wellness.

The open-plan layout ensures ample space for movement and training, and features high ceilings and spaces bathed in natural light.





A-245.11

SETH EDUCATION

Perched above the exterior breezeway sits the 32,000 sf Simulation Environment Teaching Hospital (SETH).

Designed to support interactive, hands-on learning for medical students and professionals, this flexible learning environment is equipped with advanced, interactive life-like mannequins that provide a safe setting for student learning.

Elsewhere, mock surgical and doctor's office environments simulate actual real-life conditions to create an optimal setting for both individual and group based education.



A-245.12

EVT LAB

The 12,000 sf Emerging Viral Threats Lab (EVT) addresses the need for faster detection and processing of emergent threats, such as COVID-19. The EVT lab in this facility is the first in North Louisiana approved by the Centers for Medicare and Medicaid (CMS) to conduct and analyze tests of this sort.

Biosafety Levels 1 and 2 labs provide interactive learning environments for lower threat level contaminants, while a fully isolated Biosafety Level 3 lab provides a safe space to diagnose new viruses and other pathogens that could affect the health of citizens of the region and state.





A-245.13

CONCLUSION

"From Bunker to Building" Finished product meets design team principles and vision to provide exceptional results for the following goals:

- Student Experience
- Connectivity/Community
- Health and Wellness
- Sustainability/Resilience
- Accessibility
- Flexibility
- Interaction
- Innovation
- Civic Identity

Many of the existing facilities and the University campus have been designed with an internal focus. This project flipped that codec to provide an architectural design that "unfolds" to combine a wide range of programmatic diversity, producing an environment bustling with productive encounters through intersections and overlaps.

