

### **Program Summary:**

A new college football press box and suites building replaces an existing hurricane-damaged building. The project includes two floors of suites, one floor of operations, and ground-level improvements.

### **Program Statement:**

This project replaces a facility that sustained irreparable damage during a major hurricane. The new structure extends farther north and south along the existing concrete stadium bowl, creating a stronger architectural connection to the larger stadium. Access is provided at Level 1, with dedicated elevator lobbies separating suite circulation from operational functions. An expansive storage room at the base provides storage for tables and chairs for the suites above, as well as meeting other athletic needs.

The ground-level site was designed to enhance the fan experience on gameday by relocating the mechanical yard and providing a new entrance to the main stadium. Level 2 aligns with the top of the existing concrete bowl and provides booths for coaches, press, radio, operations, and TV cameras. Levels 3 and 4 house a total of 26 suites. Level 3 features a central double-height club room that will serve as a gathering space on game days, as well as for university functions throughout the year.

Level 4 features a large exterior terrace offering sweeping views of the field, as well as the larger campus and city. The exterior celebrates the post-game procession with grand exterior stairs descending the building. Materials respond to the surrounding campus buildings while reinforcing the streamlined horizontal layout of the new structure. The project also includes improvements to the AV and Broadcast operations for the stadium.

# **A-155.01**

Building Area: (sf)  
**18,000**

Cost per Square Foot:  
**\$1,200**

Construction Cost  
**\$22,000,000**

Date of Completion:  
**August 2025**

**A-155.02**





Post Hurricane & Before Renovation



## A-155.03

The previous press box included three floors of suites and an exterior film deck at the top of the concrete bowl. The structure was damaged beyond repair in a hurricane; earlier phases of the project, overseen by the architect, included demolition of the damaged press box, repairs to the concrete stadium, a new mechanical yard located away from the stadium entry procession, and replacement of the damaged field lighting.

For the new press box, the university asked for a more streamlined structure that was better integrated into the existing stadium.

The blue panels echo the blue roofs of neighboring buildings and wrap that material down to create a dynamic, sweeping façade, celebrating the post-game processional experience.

The horizontality is emphasized with horizontally ribbed panels, as well as an exterior deck and a sweeping roof that extends toward the greater campus on the north end.

The central gathering space, to be used by the university throughout the year, is expressed in the large expanse of glass on Level 3, with views over the adjacent track-and-field and baseball complexes.





## A-155.04

Previously, suites and suite seating were enclosed in glass; the university expressed an interest in bringing the seating out into the open air to enhance the gameday experience.

The overhanging roof protects not only the suite seating from rain and early afternoon sun, but also keeps rain off the building façade.

The previous film deck at the top of the concrete bowl is enclosed in the replacement project, providing state-of-the-art environments for TV production, press, radio, operations, and coaches.



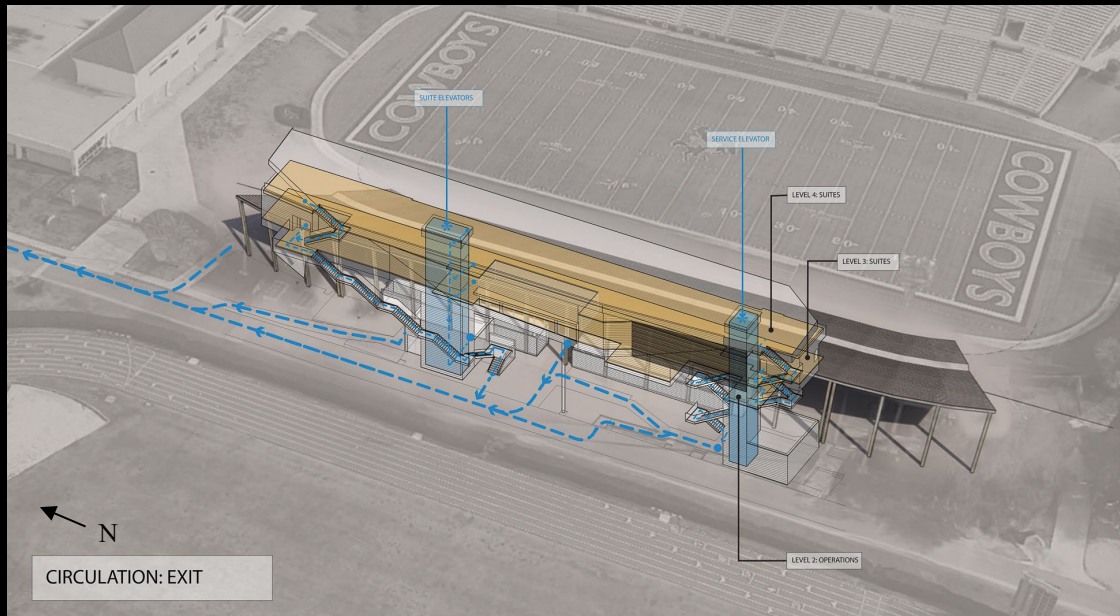
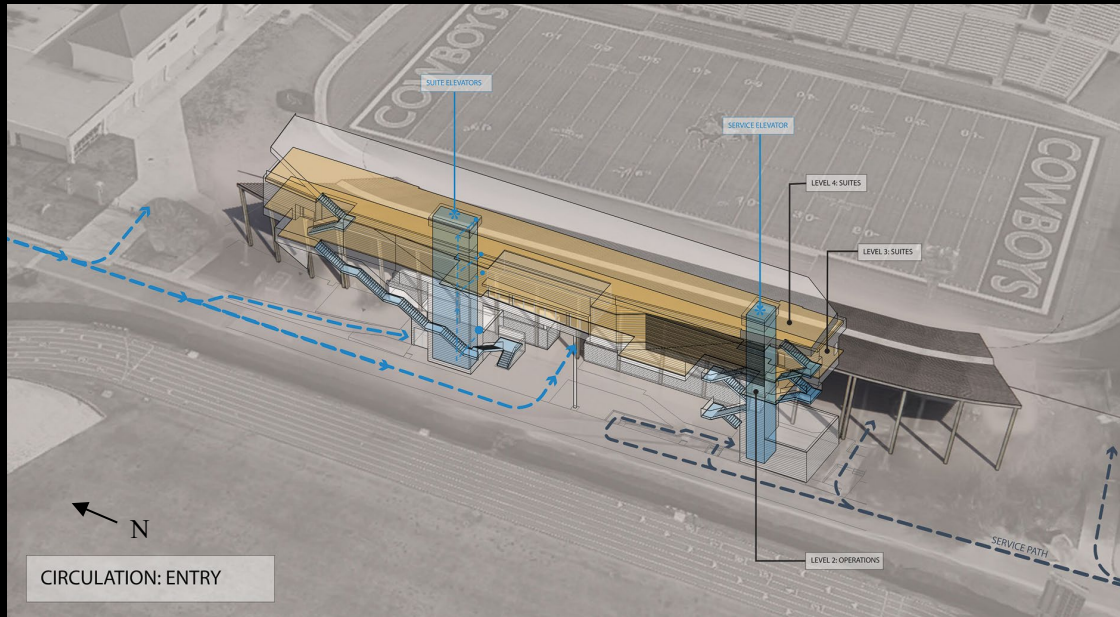
## A-155.05

The project is oriented to accommodate fan access to the stadium from the North, and service access from the south.

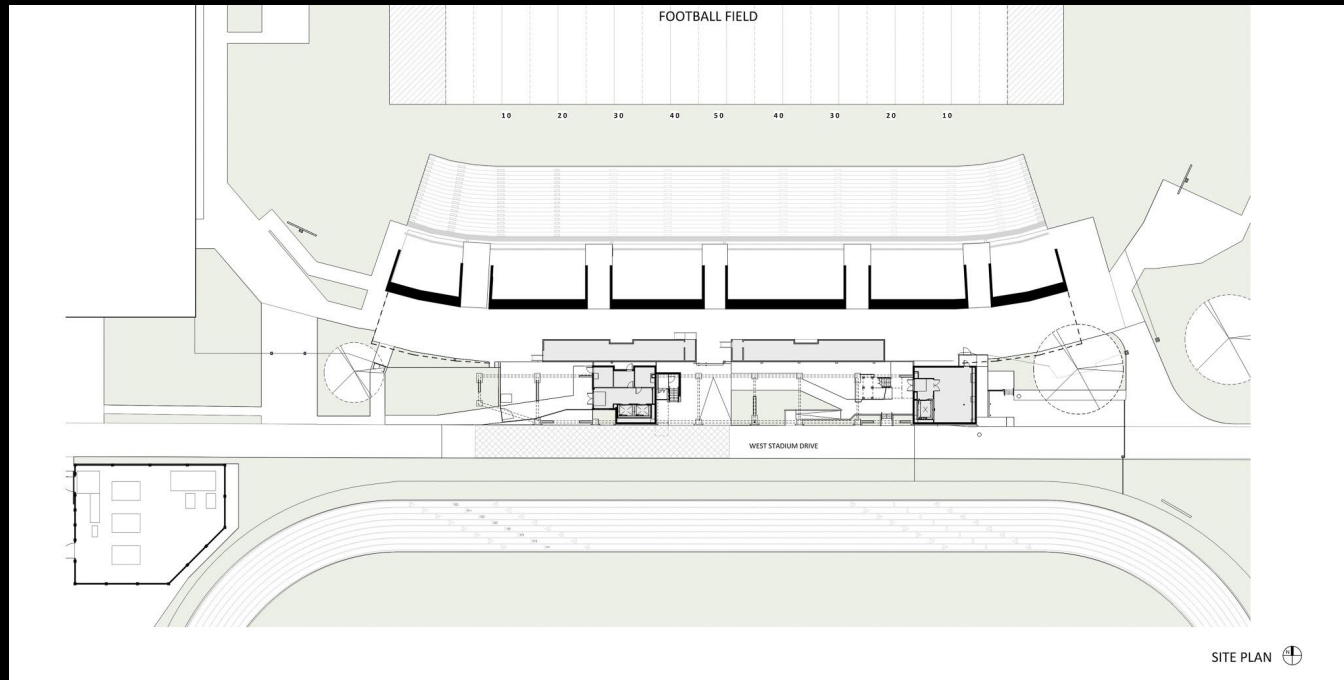
Main entry to the suites is provided with a welcoming elevator lobby at ground level, while the service elevator has a separate lobby and entry connected to a storage room and the TV broadcast truck parking on the south end.

A new entry to the larger stadium is opened up at ground level in between the two elevators.

Stairs descending the building are easily accessed and celebrated to encourage and celebrate the post-game processional down to ground level and ease crowding on the elevators.



# A-155.06



New mechanical yard shown at bottom left; it was relocated away from its previous location immediately adjacent to the stadium to reduce noise and visual clutter for fans accessing the stadium.

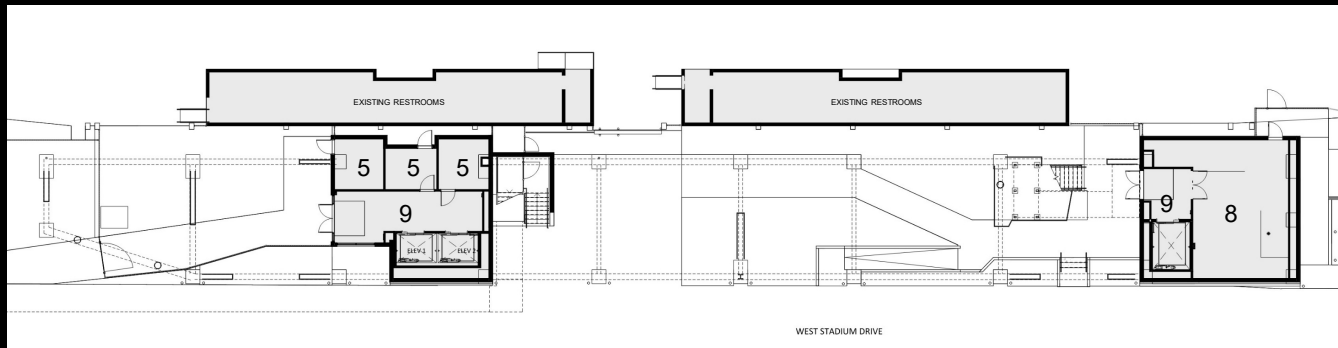
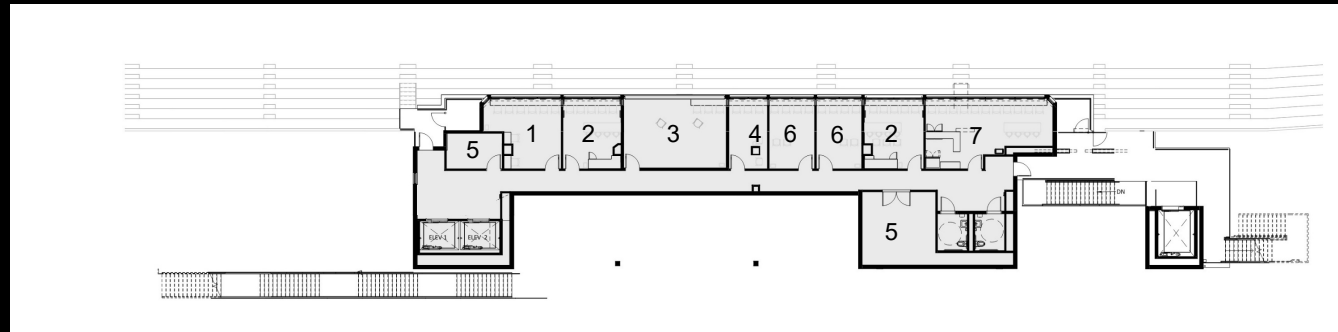
Site Plan

# A-155.07

Press booth, south end of Level 2

1. Operations
2. Coach's Booth
3. TV Broadcast / Camera
4. Stats
5. Mechanical/Electrical
6. Radio
7. Press
8. Storage
9. Elevator Lobby

Level 2 (Operations) Floor Plan

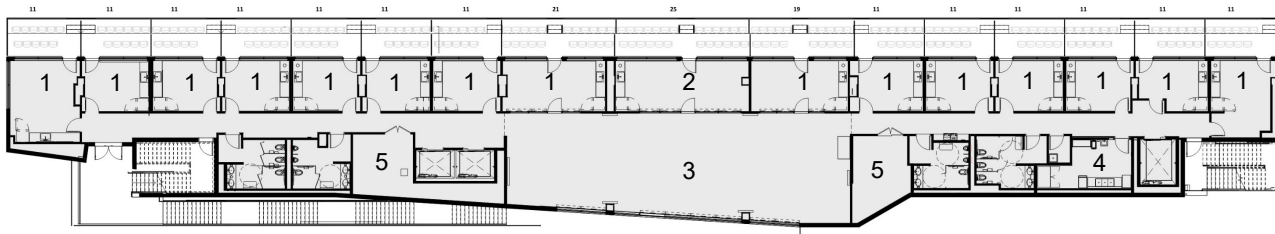


Level 1 (Ground Level) Floor Plan



# A-155.08

The double-height club room provides a gathering space on gameday as well as for university functions throughout the year, with views out to the adjacent track-and-field and baseball complexes.



Level 3 (Suite Level ) Floor Plan

Restrooms, mechanical rooms, and food service preparation room are located on the side of the building facing away from the football field.

The double-height club room provides a gathering space on gameday as well as for university functions throughout the year, with views out to the adjacent track and field and baseball complexes.

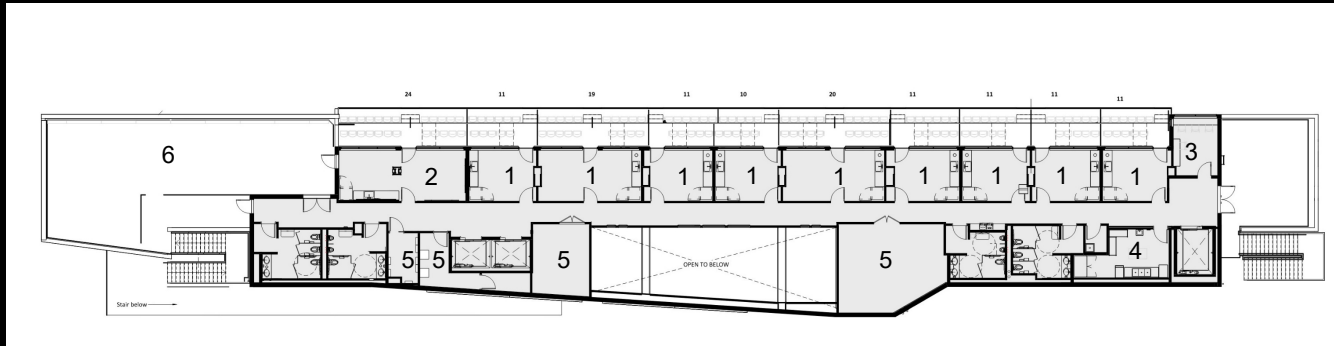
1. Suite
2. Donor Suite
3. Club Room
4. Food Service
5. Mechanical



# A-155.09



North Terrace



Level 4 (Suite Level ) Floor Plan

Restrooms, mechanical rooms, food service preparation room and the double height space are located on the side of the building facing away from the football field. Windows from the Level 4 corridor offer views into the Club Room space.

1. Suite
2. President's Suite
3. Replay Booth
4. Food Preparation
5. Mechanical/Electrical
6. North Terrace

## A-155.10



The Level 3 suites and Level 4 terrace extend out over a perforated metal panel which integrates with the stair form and will provide a backdrop for illuminated university logo signage.

# A-155.11

Donor Suite Interior Rendering





A-155.12



President's Suite Interior Rendering