

Program Summary:

New administration building and reception hall for Tribal community.

Program Statement:

The new administration building represents a significant milestone in the Tribe's pursuit of autonomy and cultural preservation. Now a federally recognized Tribe, the creation of this central administrative hub affirms the Tribe's autonomy and identity serving as a proud, permanent symbol of governance and heritage. The two-story facility houses essential Tribal functions, including offices for the Chief and Tribal Services, a formal Tribal Council conference room, reception room, kitchen, and staff break rooms. Designed in close collaboration with Tribal leadership, the building reflects Tribe's commitment to cultural continuity and future growth. Symbolism and traditional patterning were thoughtfully integrated throughout the design. The Tribe's signature diamond motif, symbolizing balance and harmony, was expressed in the exterior brickwork. Native American mandalas, created by a Tribal artist, are prominently displayed on the building's face, reinforcing its role as a beacon of cultural pride, while stacked stone and arrowhead medallions honor ancestral traditions. The curved building form, both outside and within, evokes flowing water and reflects the Tribe's deep connection to the land. Interior spaces continue this cultural narrative. Acoustic panels in the reception area feature the Rivercane basket pattern flowing water, while the flooring design was inspired by traditional Tribal beadwork. At the Tribe's request, the interior reflects a Modern Tribal aesthetic, merging tradition with contemporary design to support a thriving future grounded in heritage.

A-140.01

Building Area: (sf)
18,000 sf

Cost per Square Foot:
Confidential

Construction Cost
Confidential

Date of Completion:
March 2020

A-140.02

Front façade

The new administration building features mandalas created by Tribal members, symbolizing unity and cultural identity. Integrated with dream catchers, these mandalas are believed to offer protection for the space. The brickwork showcases the Tribe's traditional diamond pattern, representing harmony and balance.



A-140.03

Rear façade

The Chief's office features large windows overlooking the Tribal Pow Wow field.



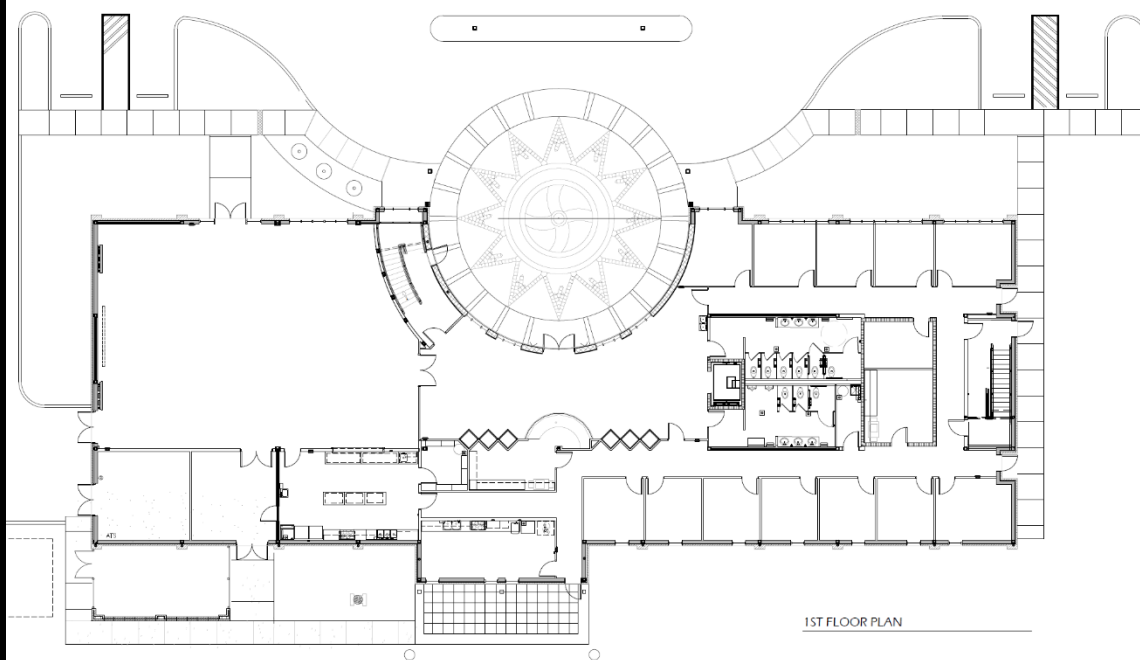
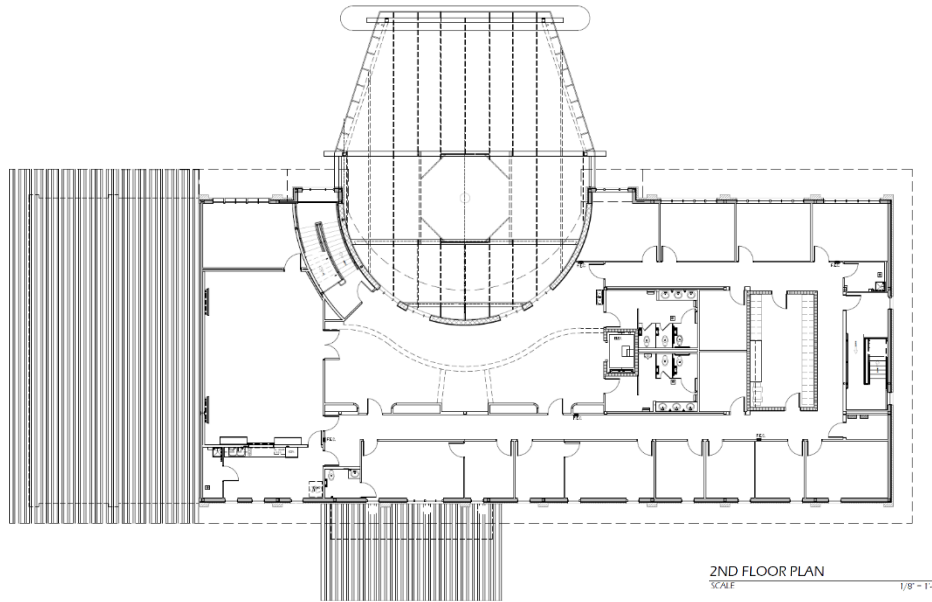


A-140.04

The red brick with its cream diamond pattern held deep significance for the Tribal Council. The diamond motif, a traditional pattern of their Tribe, symbolizes harmony and balance. Additionally, the red brick, representing clay, carried cultural importance and was a meaningful material choice.. The red brick representing clay was also very important to them.

A-140.05

As you enter the building through the curved entry, the layout is organized into public and private areas. The first floor includes a large communal room, private offices, and support spaces. The second floor features a spacious council room, the chief's office, additional private offices, and support spaces.



A-140.06

The first-floor lobby showcases modern Tribal aesthetics and display cases featuring cultural artifacts. A curved design element, symbolizing water and the Tribe's connection to the earth, flows seamlessly from the exterior stone façade into the interior space.



A-140.07

The second-floor lobby features display cases showcasing cultural artifacts. Adorned with the Tribe's traditional diamond pattern and artwork, this space serves as the entryway to the Chief's office and the Tribal conference room.



A-140.08

The floor pattern was inspired by a Tribal member's beadwork design, reflecting intricate craftsmanship and cultural tradition through its geometric motifs





A-140.09

The community meeting room serves as a vital gathering space for Tribal members, thoughtfully designed to reflect and honor their cultural heritage. Tribal symbology is woven throughout the room, from the floor pattern inspired by a Tribal member's beadwork to the custom acoustic panels that feature an abstract interpretation of the Tribe's traditional rivercane basket pattern, known as "flowing water." These elements not only enhance the aesthetic of the space but also serve as a powerful reminder of the Tribe's identity, values, and connection to nature.



A-140.10

Custom display cases were added to the lobby to showcase Tribal artifacts highlighting rivercane basket weaves with “Flowing Water” patterns and intricate beadwork that reflect the Tribe’s cultural heritage.