

### **Program Summary:**

Growing school system programmed a 70,000 S.F. two-story addition to replace modular classrooms and create a new campus edge for the existing one-story 1970s-era school.

### **Program Statement:**

The complex design required locating a new two-story classroom addition around existing modular classrooms while addressing site restrictions and functional needs. The new addition interfaces with the existing one-story 1970s-era building through a two-level student commons that creates a clear circulation link and gathering space. Located at the site's edge, the new addition creates a prominent campus identity while respecting the original building's design through compatible materials. The east-west orientation minimizes solar gain and glare by using terra-cotta louvers incorporated into the masonry façade. The 70,000 S.F. addition replaces outdated modular classrooms and accommodates long-term academic growth. Program requirements included 40 classrooms, specialized spaces for art, band, dance, and ROTC, and faculty offices and lounges. The design orients the new two-story entrance toward the main street and the school's existing entrance, reinforcing campus identity and creating a welcoming, easily identifiable point of access for students and visitors. Removal of the temporary modular units allowed for the formation of a new campus quad, connecting the commons to surrounding outdoor athletic facilities and creating an inviting, cohesive student experience. The resulting design meets complex programmatic needs, provides a flexible and future-ready learning environment, and expresses the school system's investment in long-term educational infrastructure and campus image.

# A120.01

Building Area: (sf)  
**70,000 sf**

Cost per Square Foot:  
**\$252 sf**

Construction Cost  
**\$17,612,000**

Date of Completion:  
**November 2024**



## A120.02

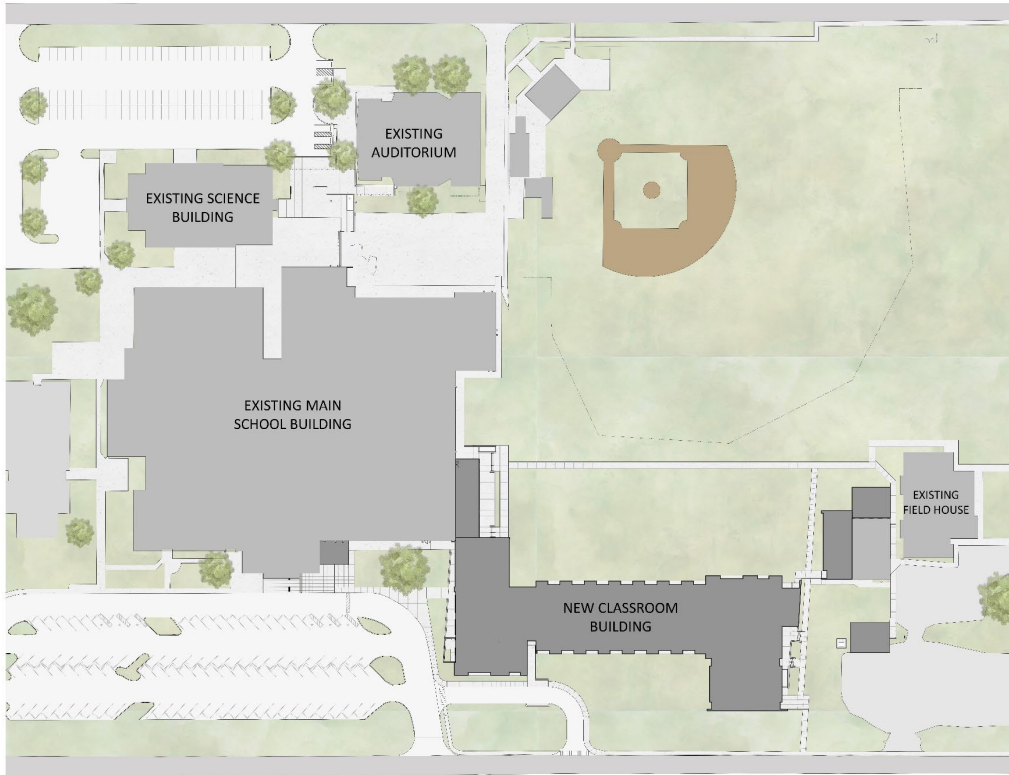
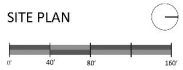
The new addition's main entry directly faces the existing school entrance, bus drop-off, and parking area, establishing a clear and intuitive campus arrival sequence. Both the first and second-floor lobbies feature expansive, south-facing glass façades, which are shielded from solar gain and glare by a perforated metal scrim. This element allows abundant natural light to filter into the interior while maintaining visual transparency and comfort. The same perforated scrim wraps the adjacent outdoor SPED classroom, providing privacy and shading. Its profile matches the metal siding used throughout the addition, creating a cohesive material language that reinforces the project's contemporary identity while complementing the existing campus architecture.

## A120.03

The existing high school campus is organized with highway access along the south side, where the main entry, bus drop-off, and parking are located on the east. Previously, 25 temporary modular classroom buildings occupied the northern portion of the campus, just east of the baseball field. To replace these, the new two-story classroom addition was placed along the eastern edge of the site. Once the modulares were removed, a new campus green—or quad—was created west of the addition and directly north of the student commons, reinforcing connectivity and establishing a central gathering space that links the new and existing buildings.

### COVINGTON HIGH SCHOOL ADDITIONS

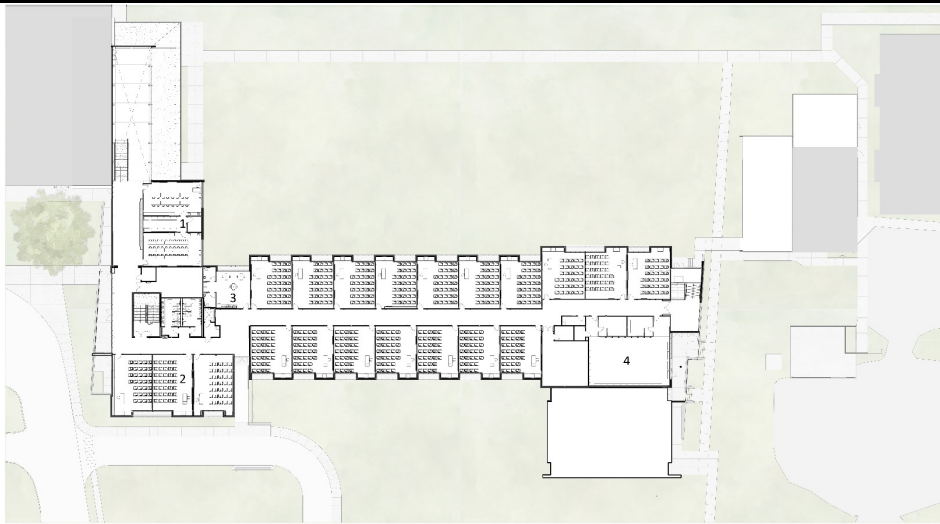
#### SITE PLAN





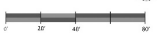
# A120.04

The floor plan is organized around a simple and efficient parti: stacked classrooms arranged along a linear north-south axis. This orientation was driven by site constraints and enables a direct connection to the existing school through a new two-story student commons. The plan creates a distinct separation between the main classroom wing and supporting functions, with the program terminating in a dedicated band facility. The building's linear layout also addresses east-west solar exposure; classroom windows are deeply recessed and equipped with terra-cotta shading louvers to minimize heat gain and glare at each opening.

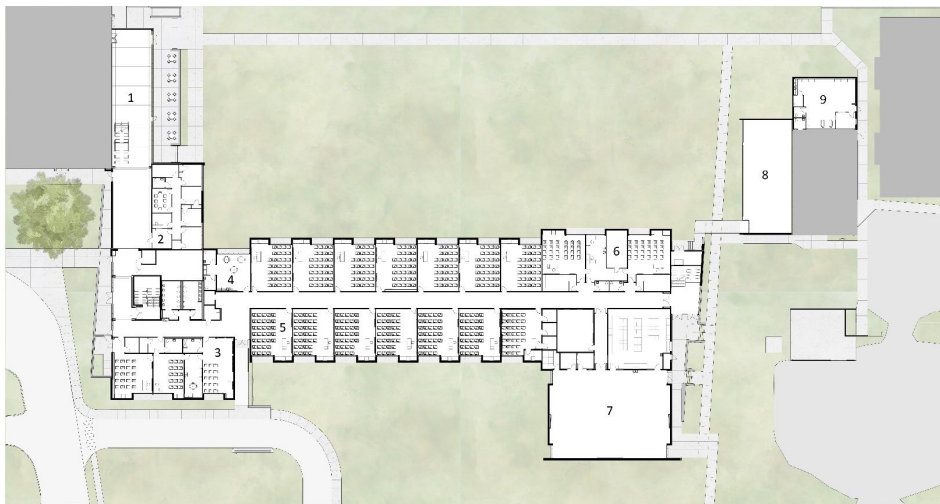


COVINGTON HIGH SCHOOL  
ADDITIONS

SECOND FLOOR PLAN



- 1 ART
- 2 CLASSROOM
- 3 FACULTY LOUNGE
- 4 DANCE

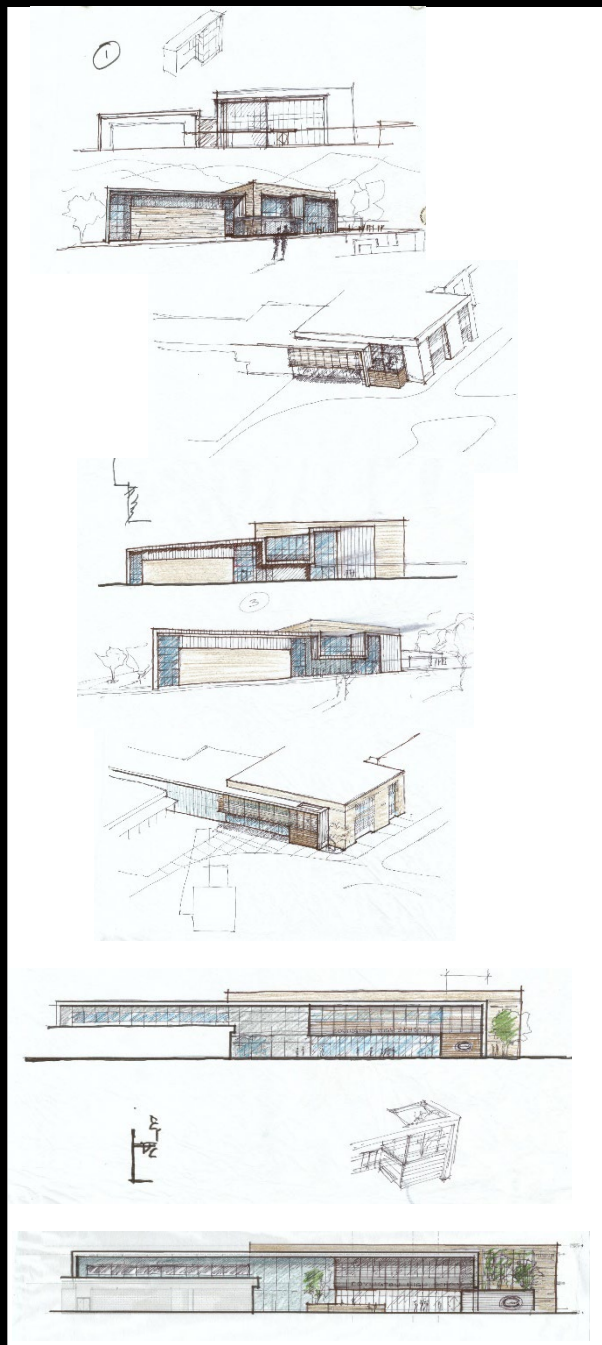


COVINGTON HIGH SCHOOL  
ADDITIONS

FIRST FLOOR PLAN



- 1 STUDENT COMMONS
- 2 OFFICE
- 3 SPECIAL EDUCATION
- 4 FACULTY LOUNGE
- 5 CLASSROOM
- 6 ROTC
- 7 BAND
- 8 ROTC TARGET RANGE
- 9 ATHLETIC TRAINING



# A120.05

Hand drawn design study sketches in concert with the use of building information modeling (BIM) helped the design team articulate the massing strategies and verify that the solar shading design elements functionality was accurate. This design tool also assisted the school system to realize their design requirements.



## A120.06

The new addition's entry lobby faces the existing school entrance and southern exposure, using a perforated metal scrim to reduce solar gain while allowing natural light and transparency. The two-story form extends over the existing one-story structure, creating a dynamic vertical volume that connects the student commons and unifies old and new elements.



## A120.07

Exterior view of the new addition's lobby entry, featuring a perforated metal scrim for solar shading. The folding metal roof form extends downward to enclose the outdoor SPED classroom, integrating it into the overall massing. The metal fascia also ties into the one-story existing school, reinforcing the architectural connection and establishing the needed circulation connection as the new student commons.





## A120.08

The east and west classroom façades address solar gain and maximize natural light through terra-cotta louvers and perforated metal shading at each window. The west façade opens to the new campus quad, while the east façade features a covered SPED entry integrated into the campus-edge elevation. The color and spacing of the terra-cotta louvers were carefully selected and detailed in harmony with the vocabulary of the campus brick veneer.







## A120.09

The north façade houses the band room, practice space, and exit stairwell. Folded metal panels wrap these program elements, creating canopies and overhangs that articulate form while blending with the campus's standard brick palette.





## A120.10

The high school's dedication to the arts is showcased through the generous spaces allocated to its band and dance programs. Thoughtfully designed acoustic treatments create a finely tuned environment, supporting the needs of a fully equipped and high-performing band.

The dance studio benefits from abundant northern daylight and offers elevated views overlooking the school's athletic fields, fostering both inspiration and connection to the broader campus.







# A120.11

The long corridors are offset to intersect at the elevator lobby, providing access to the entry and bringing in natural light. Each corridor terminates in a view to daylight, enhancing wayfinding and user orientation.

The second level of the student commons provides efficient circulation between the existing and new classroom wings. Ample natural light enhances the experience for students as they move through and gather within the space.

The polycarbonate clerestory, perforated metal scrim, and large canopy allow harvesting of natural light while controlling solar glare and gain.





## A120.12

The student commons faces north into the new campus quad. At the intersection of the classroom wing, masonry volumes, and the sculptural metal roof form, the space serves as the connective hub between the existing and new school buildings.

The classroom facades feature brick massing with deeply recessed windows. The terra cotta louvers protect the opening from solar gain while still allowing visibility.







## A120.13

The student commons connects to the existing school through a two-story volume that provides access to the new addition, featuring an open stairway to the second floor.

The existing school brick and new structure is exposed and enhanced with light fixtures. An extensive canopy creates an outdoor porch for gathering that is open to the new campus quad.

