

### Program Summary:

A vibrant, new school designed to promote community, collaboration and student growth in a safe, secure and supportive environment.

### Program Statement:

This new elementary school is a transformative project revitalizing an underserved community by replacing two outdated 1950s-era schools with a state-of-the-art learning environment that prioritizes safety, security, and an optimal educational experience. Located under an airport flight path, its design addresses noise mitigation through controlled exterior penetrations and interior glazing that balances sound reduction with the benefits of natural light. Advanced acoustic strategies, strategic borrowed daylighting, and intuitive wayfinding foster a positive, engaging atmosphere, while secure internal courtyards and collaborative zones create visually connected, well-lit spaces without compromising safety. A vibrant color-coded design aids navigation and symbolizes student progression, reinforcing achievement and belonging, and although exterior openings are limited for security, the use of dynamic materials and textures reflects the creativity and energy within. More than a school, this building stands as a beacon of community pride and a commitment to the future, offering a safe, inspiring, and collaborative space for learning and growth.

## A10.01

Building Area: (sf)  
**60,758 SF**

Cost per Square Foot:  
**\$400**

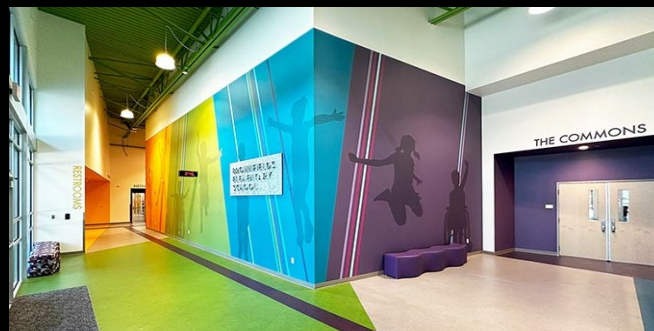
Construction Cost  
**\$24.3 million**

Date of Completion:  
**August 5, 2024**



## A10.02

The new elementary school in an underserved area replaces two aging schools with a modern, student-focused environment. Prioritizing safety and learning, it incorporates security measures, advanced acoustics to reduce nearby airport noise, and borrowed daylighting for natural illumination. Simplified color theory and wayfinding support easy navigation and independence for younger grades. More than just a building, it fosters a safe, engaging, and inspiring space for students and the community.



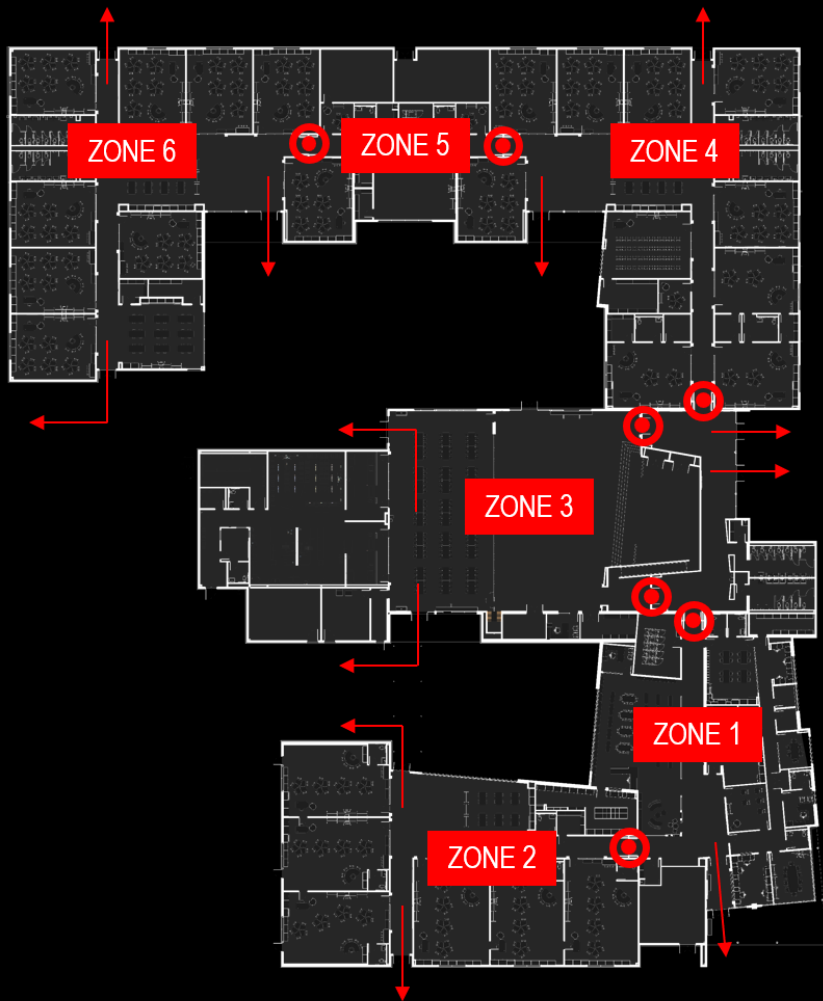


## A10.03

Designing the school required balancing security and openness. A fortified boundary ensures safety, while transparent materials, landscaping, and strategic planning create an inviting, collaborative environment that fosters creativity and community.

The school's design creates secure internal courtyards and playgrounds, ensuring safety while maintaining openness. These spaces enhance transparency, natural light, and visual connections for a dynamic learning environment. The solid exterior, with strategic openings, balances security and controlled daylight, fostering an engaging educational setting.





## A10.04

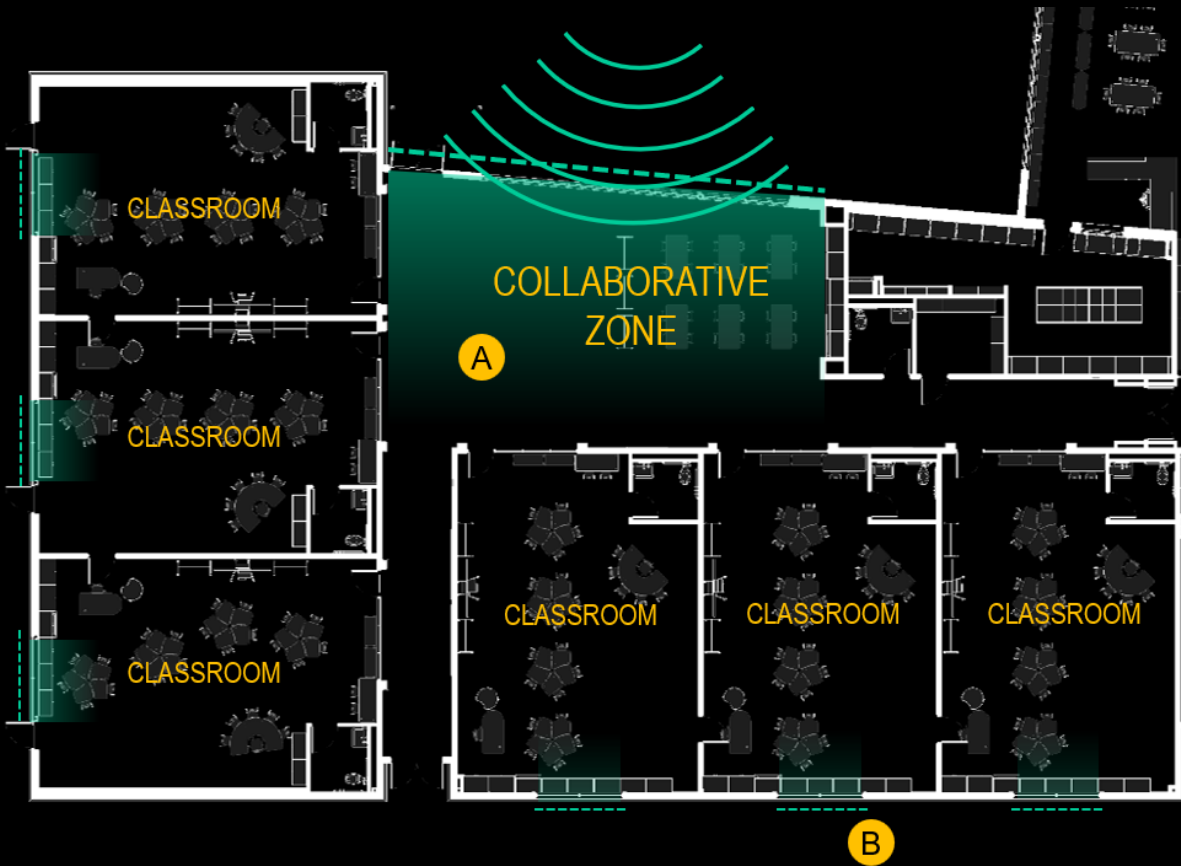
The school's design includes security zones with lockdown points activated by designated buttons. During a lockdown, doors release to allow exit while preventing deeper access, guiding intruders to monitored exits for effective law enforcement response.

When not in lockdown, doors stay open for free movement. Colorful portals add a playful touch, marking grade level transitions.

## A10.05

Located under a flight path, the school faced significant noise challenges. To minimize distractions, roof penetrations and exterior openings near classrooms were reduced, with openings placed in collaborative spaces where noise is less disruptive, ensuring an optimal learning environment.

This strategy was repeated in all classroom pods.







THIRD, FOURTH, & FIFTH



FIRST & SECOND



PRE-K & KINDERGARTEN

## A10.06

Distinct colors for each grade-level pod aid in navigation, fostering independence and confidence. These colors also symbolize growth, marking milestones as students advance, enhancing wayfinding and reinforcing their academic journey.

Purple unifies the spaces, creating continuity and a cohesive visual identity that fosters connection and belonging.



## A10.07

Public spaces feature all wayfinding colors, symbolizing shared ownership and fostering cross-grade collaboration for collective learning and community building.

The light spectrum symbolizes the school's diversity, blending unique strengths and perspectives into a unified, dynamic learning environment.







## A10.08

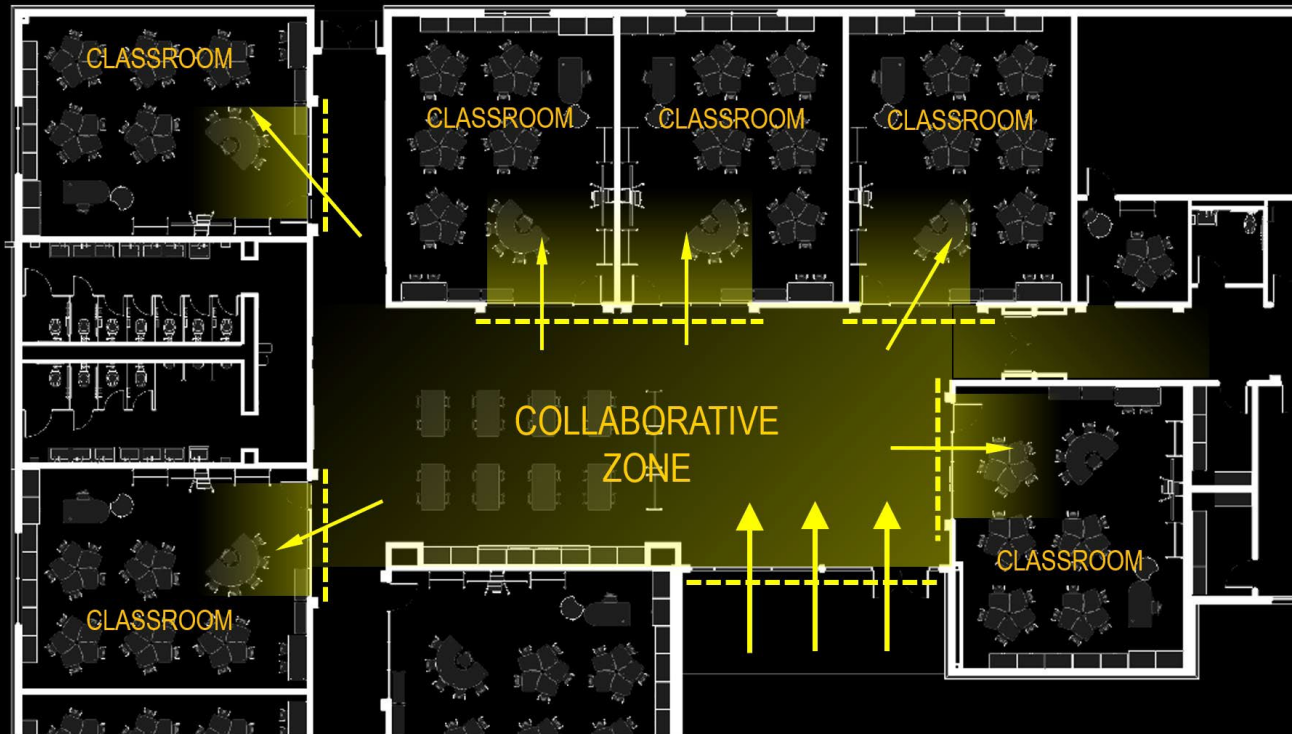
The vibrant colors of the interior were carried through to the exterior facade, ensuring a dynamic and engaging presence. With limited openings due to security and acoustic concerns, pattern and texture were used to break up what could have been a plain facade. A mix of smooth and ribbed panels, colored accents, and metal screens creates depth and visual interest, reflecting the energy, collaboration, and excitement found within the school's interior spaces.





## A10.09

Exterior penetrations were restricted due to acoustics and security concerns, leading to a design that prioritized borrowed daylight. By using secure courtyards with large glass expanses, natural light was channeled into collaborative spaces. Secondary glazed openings into classrooms allowed for daylight without compromising security or exposing occupants to external noise, creating a well-lit and secure learning environment.







## A10.10

The culmination of these design strategies ensures a safe, collaborative, and inspiring environment that fosters education and growth. By prioritizing security, natural light, and connectivity, this facility creates an atmosphere that enhances learning while promoting well-being. Beyond its function as an educational space, its impact on the community will be profound—serving as a beacon of progress, a symbol of collective pride, and a lasting pledge to the future. This facility stands as a testament to the community's commitment to innovation, learning, and the success of future generations.





A10.11



A10.12

