

5 Minutes with ACHE

Sponsored by 

May 2024 Newsletter

A Message from the ACHE President



Hello ACHE Friends!

Are you or your colleagues looking for professional development opportunities? ACHE has an excellent offering in the Emerging Leaders Institute scheduled for June 25 - 28, 2024.

For the first time in several years, the ACHE Emerging Leaders Institute, or ELI, will be offered in person at [University of La Verne](#) in [La Verne, California](#). It is a four day experience dedicated to nurturing the next generation of leaders within the continuing higher education space.

The curriculum is designed specifically for any professional who has 3-5 years of experience in continuing education and is interested in becoming a skilled leader.

Here are a few of the topics that will be covered:

- Enhancing personal and organizational leadership skills to navigate and lead effective teams
- Crafting innovative educational programs that meet the evolving needs of adult learners
- Exploring the implications of AI in educational settings
- Preparing the next generation of learners with strategies that resonate with their values and learning preferences
- Identifying and cultivating the leadership potential of your teammates and broader community

Join us to engage with the curriculum, network with your peers, share insights and take your next step towards your leadership goals.

[University of La Verne](#) is a beautiful place to enhance your learning experience. Located in the heart of the [City of La Verne](#), the campus has tree-lined streets that bring serenity and peacefulness. It is

just a couple of blocks from shopping and dining opportunities.

Registration is open! Secure your spot today to become the leader you dream of being.

[REGISTER NOW!](#)

Thank you our sponsor!



enrole
Registration Management

Save Time & Resources with our all-in-one SaaS Based Platform!

- Non-credit registration
- Automate communications
- Enhance profitability

Get started now at entrinsik.com/enrole/

Enrole

Streamline Continuing Ed non-credit programs with easy course creation & reporting. Self-custom e-commerce site, LMS integrations, & quick student self-enroll, saves time & money. Easy for everyone!

[Visit Enrole's Website](#)

Member Highlight

University of
La Verne

LaFetra College
of Education

About La Verne:

The University of La Verne is a private not-for-profit university located in La Verne, California, United States, about 35 miles east of Los Angeles.

Founded in 1891, the university is composed of the College of Arts and Sciences, the College of Business, the LaFetra College of Education, the Cástulo de la Rocha College of Health and Community Well-Being, and the College of Law and Public Service, seven regional campuses throughout Southern California, and robust online offerings. Scholastic opportunities abound, thanks to more than 50 undergraduate programs, more than 20 master's degrees, five doctorates, and six credential programs.

About LaFetra:

Whether you are starting your educational journey or are looking to take your career to the next level with a credential, certificate, or graduate degree, the LaFetra College of Education's programs equip students with the knowledge and skills to address the challenges of today's schools and educational organizations. Our program specialties include child development, teaching, special education, counseling, school psychology, and educational leadership.

Upcoming Events

2024 ACHE EMERGING LEADERS INSTITUTE

SAVE THE DATE

Date

June 25-28, 2024

Cost

\$795 for members. \$895 for non-members.

Location

University of La Verne

1950 3rd St.

La Verne, CA 91750

BACK IN-PERSON!

Details will be available soon.

ACHE

2024 ACHE Emerging Leaders Institute

The Emerging Leadership Institute (ELI) returns this summer in-person at the University of La Verne from June 25-28, 2024. The cost is \$795 for members and \$895 for non-members. For more details, click the button below.

[More Information](#)



86th Annual ACHE Conference (2024)

The Association for Continuing Higher Education is excited to invite you to join us in Palm Springs, California from October 14-16, 2024 for the 86th Annual Conference! This year's conference theme is "Fostering Care and Collaboration Through a Culture of Wellness".

[Register Now!](#)

You are invited to join ACHE's

2024 SUMMER WEBINAR SERIES

Titles will be announced soon!

Every Wednesday
1.00 pm EST

www.acheinc.org

2024 Summer Webinar Series

Get excited for the 2024 Summer Webinar Series. The webinar topics are set to be announced soon. **Mark your calendars for every Wednesday, 1 PM EST starting July 10 and ends August 7!** Registration will open soon.



Feel the Love (June 9 at 1 PM EST)

Join your ACHE family virtually for some fun, connection, and engagement! These social events allow for us to connect with each other in a fun atmosphere of music, games, networking and laughter. Give yourself a needed break and your brain a boost with an entertaining hour of friendship and engagement.

[REGISTER HERE!](#)

Interview with Dr. Rich Whitney

Tell us a little bit about the Emerging Leaders Institute.

We wanted to provide a Leadership conference that has some utility on a few levels: the participants as participants. The participants as creators and program designers, and our participants as leaders.

The ELI participants are the star of the show while they attend the ELI. We hope they get some information and some tools they can use. The more we help our learners connect with themselves, their learning, their experience. They will learn about themselves and learners, leaders, and mentors and team leaders. The ELI faculty will model the way about how to make leadership come to live in

real time. The participant will experience what those aha moments feel like. Then in turn they can work with their staff, and developers to create programs and continuing higher ed back home.

What are a few of the expected learning outcomes for participants?

The learners will:

- understand how they learn
- apply learning styles to team roles and leadership
- apply leadership development models and applications to real life
- apply untapped leadership skills to build stronger teams
- create stronger teams and relationships with GenZ colleagues and clients
- analyze current and useful applications of AI and many things ChatGPT

Why are you excited to be a lead facilitator?

I love to create programs. I love to develop a sequence of aha moments and guided discovery to show our potential and our leadership. The ELI Program is the perfect opportunity to make this happen.

What is your leadership philosophy?

Leadership is leadership is leadership. Each person can contribute and make a difference. We need to learn how to apply proven skills, theories, and approaches that we are already using by default. Understanding our power and leadership is just applying intention and power to the whole equation.

Can you share any "aha moments" from previous institutes?

This is my first ELI. From the many programs I have created and participated in I love when you see the lightbulb go off and the spark of connection happens. It is spontaneous combustion...and it is palpable.

Have You Heard of Canva?

Canva is a web-based graphic design platform that allows users to create a wide range of visual content. It offers an easy-to-use, drag-and-drop interface along with a vast library of templates, images, icons, and fonts. Canva is designed to be accessible for both beginners and experienced designers, enabling them to create professional-looking graphics without the need for advanced design skills.

Key Features of Canva:

- **Templates:**

Canva provides thousands of pre-designed templates for various needs, including social media posts, presentations, posters, flyers, business cards, and more.

- **Drag-and-Drop Editor:**

The intuitive drag-and-drop editor makes it simple to customize templates or create designs from scratch. Users can easily add, move, and resize elements.

- **Extensive Media Library:**

Canva's library includes millions of free and premium images, illustrations, icons, and fonts, giving users a wide variety of design elements to choose from.

- **Collaboration:**

Canva allows for real-time collaboration, making it easy for teams to work together on designs. Users can share their designs with others and grant them editing or viewing access.

- **Brand Kit:**

For Canva Pro users, the Brand Kit feature helps maintain brand consistency by allowing users to upload brand logos, fonts, and color palettes for easy access during design creation.

- **Download and Share:**

Completed designs can be downloaded in various formats (PNG, JPG, PDF, etc.) or shared directly to social media platforms, emailed, or linked via a shareable URL.

- **Additional Tools:**

Canva offers extra tools like photo editing, animation, video editing, and the ability to print designs on various products (e.g., t-shirts, mugs).

Overall, Canva is a versatile and user-friendly tool for anyone looking to produce high-quality visual content, whether for personal, educational, or professional purposes.



ACHE Board Members



Patti Spaniola,
President



Susan Elkins,
Immediate Past
President



Terry Ratcliff,
Vice President



Julie Shankle,
Vice President



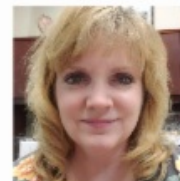
Clare Van Ness,
Executive Director



Bryan Best,
Director



Clayton Mack,
Director



Marilyn Read,
Director



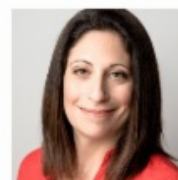
Jessica Applewhite,
Director



Kate White,
Director



Stacey Rosenberg,
Director



Amy Rell,
Director



Suzanne Williams,
Director

5 Minutes with ACHE

Sponsored by 

Association for Continuing Higher Education | 940 W 1st St. | CHICO, CA 95929 US

[Unsubscribe](#) | [Update Profile](#) | [Constant Contact Data Notice](#)



Try email marketing for free today!