

# **YOUR WAY**

*Florida Adult Education*

**ACE Summer Symposium  
June 12, 2023**



# Staff Updates and Introductions

**Charlie Feeher, Bureau Chief, Grants Management and Administration**

- [Charles.Feehrer@fldoe.org](mailto:Charles.Feehrer@fldoe.org)

**Dr. Deborah Meyer, State Director of Program Implementation**

- [Deborah.Meyer@fldoe.org](mailto:Deborah.Meyer@fldoe.org)

**Catherine O'Neil, Program Director of Integrated Education and Training**

- [Catherine.O'Neil@fldoe.org](mailto:Catherine.O'Neil@fldoe.org)

**Carol Bruner, Program Performance Analyst**

- [Carol.Bruner@fldoe.org](mailto:Carol.Bruner@fldoe.org)

**Ashley Olevitch, High School Equivalency Manager**

- [Ashley.Olevitch1@fldoe.org](mailto:Ashley.Olevitch1@fldoe.org)

**Vacant, State Director of Professional Development**

**Vacant, Coordinator of Professional Development**

# QR Code for All Other Adult Education Questions

## Adult Education Technical Assistance

- All Adult Education Technical Assistance Questions should be submitted to FDOE via the following link: <https://forms.office.com/r/4iTGrJ7979>
- This **does not include** any questions about the 2023-24 AEFLA RFP. RFP questions must be submitted in writing to Mallory Martinez by June 5, 2023.



Scan the QR  
Code here!

# Curriculum Updates

Dr. Debby Meyer  
Director of Program Implementation  
[Deborah.Meyer@fldoe.org](mailto:Deborah.Meyer@fldoe.org)

# New Adult Education Courses

<b>Academic Skills Building (ASB)</b>
ASB Mathematics
ASB Language Arts

- Federally funded program designed to serve students who meet the WIOA definition of “basic skills deficient.”
- For students who already hold a diploma or high school equivalency but do not possess the literacy and math skills of a high school graduate.
- Help students with literacy and math skills appearing in NRS levels 5 and 6 (GE 9.0-12.9) to address gaps needed to get a job, upskill, or enter postsecondary education.
- This will replace the AAEE and CCR courses.

# Courses Dagged for Deletion

Programs Ending at Close of 2023-24 Reporting Year	Alternative Program
GED®- I	Duplicate of GED® Comprehensive and IET
English Literacy for Career and Technical Education (ELCATE)	Falls under Adult ESOL
*Adult ESOL Literacy Skills	Falls under Adult ESOL
*Applied Academics for Adult Education (AAAE)	New Academic Skills Building (ASB) courses
*ESOL College and Career Readiness (CCR)	New Academic Skills Building (ASB) courses
ABX Reading (0200) & Language (0300)	Replaced by ABX RLA (0400)

\*Not eligible for federal funding

# Overview of Adult Education Courses 2024-25

<b>ABE (1-4)</b>
ABE Mathematics
ABE Reasoning through Language Arts (RLA)

<b>AHS (5-6)</b>
Adult High School
*Adult High School Co-enrolled

<b>GED® Preparation (5-6)</b>
GED® Reasoning through Language Arts
GED® Science
GED® Social Studies
GED® Math
GED® Comprehensive

<b>ESOL (1-6)</b>
Adult ESOL

<b>Academic Skills Building (ASB) (5-6)</b>
ASB Mathematics
ASB Language Arts

\*Not eligible for federal funding

# MSG for Completion of Level 6 ESOL

Functioning Level	TABE CLAS-E Scale Scores		CASAS Life and Works 80 Series Scale Scores	CASAS Life and Works 980 Series Scale Scores	BEST Plus 2.0 Scale Scores
	Listening	Reading	Reading	Listening	Speaking & Listening
NRS > 6	608-710	589-680	236-265	228-240	565-999

For program #1532010900/Course 9900040, Adult ESOL, gains are awarded when students successfully advance educational functioning levels based on pre and post testing. The outlined tests and test scores are used to determine initial functioning level placement and EFL gains.



# Assessment Technical Assistance Paper

## Expanded Assessment Guidelines

- More assessment guidelines for Out-of-Range Scores for CASAS, TABE, and TABE CLAS-E for Out-of-Range (OOR) scores.
- New data system collects all tests, which means more specific guidance is needed for OOR scores.
- Establishing an initial EFL within the first 12 hours of enrollment is crucial. There is no limit on re-testing when establishing a student's initial EFL.
- Per FDOE, programs should re-test students by administering the next lower-level test or next higher-level test to obtain an in-range scale score.
- With the intention to dagger the Adult ESOL Literacy Skills, FDOE recognizes some students may be unable to establish an initial EFL. Guidance is provided for these cases.

## Change in Curriculum

- Addition of 2 ASB Courses: ASB RLA and ASB Math
- Dagging of 7 courses: GED-I, ELCATE, CCR, Adult ESOL Literacy, AA AE, ABX0200, and ABX0300

# Adult ESOL Curriculum Framework

## Two Core Components

- Academic Content Standards: B.E.S.T. Standards for Adult Education
- Language Acquisition Standards: English Language Proficiency Standards

## Other Supporting Components

- Life and Work Skills Competencies
- Integrated English Literacy and Civics Education (IELCE) Competencies
- Literacy Skills Standards and Life and Work Skills

## Expanded Participation in Integrated English Literacy and Civics Education

- Adult ESOL students of any level are allowed to participate in IELCE program

# Adult High School

## Adult High School Technical Assistance Paper

- Draft version is available on the website

## Adult High School Co-Enrolled List

- Completed and released May 2023
  - Documents can be found on the 2023-24 Adult Education Curriculum Frameworks webpage
- No courses were deleted from the AHS Co-Enrolled List
- 17 courses were added to the AHS Co-Enrolled List

# Adult High School

## Adult High School Co-Enrolled List

- Added courses

Course Number	Course Title
<b>ENGLISH LANGUAGE ARTS</b>	
<b>Literature</b>	
1005345*	Humane Letters 1 Literature
1005346*	Humane Letters 1 Literature Honors
1005347*	Humane Letters 2 Literature
1005348*	Humane Letters 2 Literature Honors
1005351*	Humane Letters 3 Literature
1005352*	Humane Letters 3 Literature Honors
1005353*	Humane Letters 4 Literature
1005354*	Humane Letters 4 Literature Honors

Course Number	Course Title
<b>MATHEMATICS</b>	
<b>Liberal Arts Mathematics</b>	
1207350	Mathematics for College Liberal Arts
<b>Probability and Statistics</b>	
1210305	Mathematics for College Statistics

Course Number	Course Title
<b>SOCIAL STUDIES</b>	
<b>American and Western Hemispheric Histories</b>	
2100480*	Visions and Countervisions: Europe, U.S. and the World from 1848 Honors
<b>World and Eastern Hemispheric Histories</b>	
2109342*	Humane Letters 2 – History
2109343*	Humane Letters 2 – History Honors
2109344*	Humane Letters 3 – History
2109345*	Humane Letters 3 – History Honors
2109346*	Humane Letters 4 – History
2109347*	Humane Letters 4 – History Honors

# IET Update

Catherine O'Neil, Program Director  
Integrated Education & Training  
[Catherine.O'Neil@fldoe.org](mailto:Catherine.O'Neil@fldoe.org)

# IET by the Numbers

**Total Approved IET Programs: 392**

<b>Top 5 Career Clusters</b>	<b>Number of IET Programs</b>
Health Science	135
Architecture & Construction	59
Business Management & Administration	35
Hospitality & Tourism	31
Information Technology	29

State Approved IET Programs as of 5/8/23

# IET Enrollment by Career Cluster

Career Cluster	Reported Enrollment 2021-22	Career Cluster	Reported Enrollment 2021-22
Architecture & Construction	108	Hospitality & Tourism	40
Arts, A/V Technology & Communications	1	Information Technology	20
Business Management & Administration	66	Manufacturing	19
Education & Training	7	Marketing, Sales & Service	6
Energy	11	Transportation, Distribution & Logistics	35
Health Science	1,300		

# IET Enrollment by Career Cluster

Surveys F and W  
Data as of March 2, 2023

Career Cluster	Reported Enrollment 2022-23	Career Cluster	Reported Enrollment 2022-23
Architecture & Construction	71	Manufacturing	27
Business Management & Administration	2	Marketing, Sales & Service	26
Education & Training	33	Transportation, Distribution & Logistics	8
Health Science	1,216	Marketing, Sales & Service	26
Hospitality & Tourism	16	Total Students Reported	1,454
Information Technology	55		



# MSG Type 4: Progress Toward Milestone

## Completion of a registered pre-apprenticeship program

- Please reference WDIS, CCTCMIS and CBO Appendix Apprenticeship Sponsor Code for a complete list of registered preapprenticeship programs in the state of Florida.
- The preapprenticeship program must be represented on this list to count.
- To register a preapprenticeship program, contact the ATR associated with your region.

Registered Preapprenticeship Program
Registered Preapprenticeship Program Name
Program Sponsor Code
Preapprenticeship Program Number/CIP Number

# Grants & Compliance

Charlie Feehrer, Bureau Chief  
Grants Management & Compliance

[Charles.Feehrer@fldoe.org](mailto:Charles.Feehrer@fldoe.org)

# AEFLA Funding Announcement

## Consolidated – Grant Application

- Adult General Education (AGE) - Sec. 231
- Integrated English Literacy and Civics Education (IELCE) - Sec. 243
- Corrections Education (CE) - Sec. 225

**Due June 14, 2023**

<https://www.fldoe.org/academics/career-adult-edu/funding-opportunities/2023-2024-funding-opportunities/WIOAGrants.stml>

# Grants Administration and Compliance

## Consolidated AEFLA (AGE, Corrections and IELCE) application is open

- The RFP, Implementation Guide and Grant Workbook are posted at: <https://www.fldoe.org/academics/career-adult-edu/funding-opportunities/2023-2024-funding-opportunities/WIOAGrants.stml>
- Chancellor O'Farrell sent the funding opportunities memo on 5/12/2023
- Webinars were scheduled for May 19th and May 31st.  
See funding opportunities website for slides and recordings.
- Applications are DUE on or before Friday, June 14, 2023.

# Grants Administration and Compliance

## ShareFile

- All 2022-23 DOE200 Grant Award Notifications are available in folder #7
- Any ShareFile issues/questions must be sent to [OGM@fldoe.org](mailto:OGM@fldoe.org)

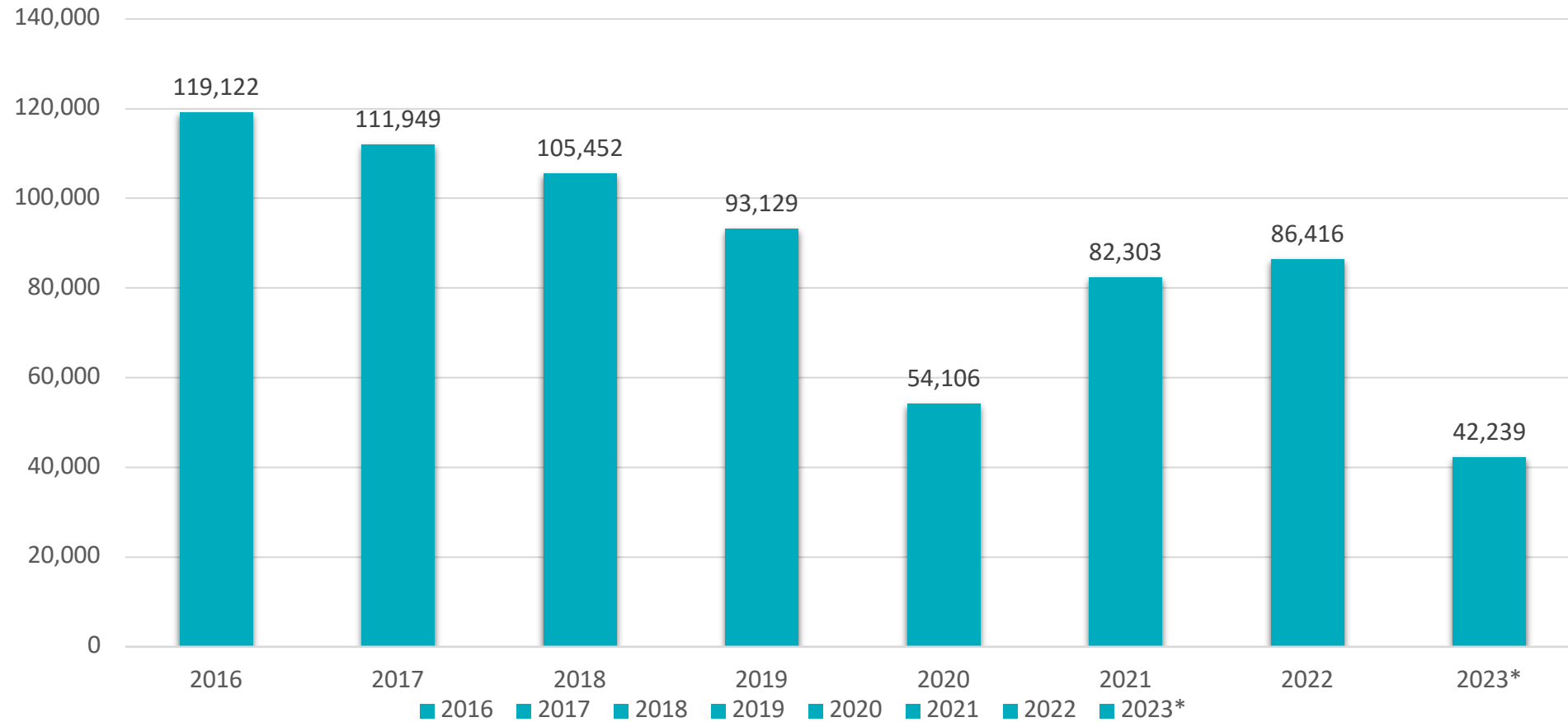
## DOE200

- Timelines for amendments, obligating funds and final reports

# GED® Testing Updates

Ashley Olevitch  
High School Equivalency Diploma Program  
Manager & GED® Administrator  
[Ashley.Olevitch1@fldoe.org](mailto:Ashley.Olevitch1@fldoe.org)

# GED® Tests Taken



\*As of May 23, 2023

# Testing Trends

## **First quarter testing and GED® Ready volume is strongest since 2019**

- Testing volumes for Q1 2023 surpass Q1 2019 by 1,200
- GED® Ready volumes for Q1 2023 surpass Q1 2019 by nearly 10,000

## **More GED.com accounts were created in Q1 2023 compared with Q1 2019**

- Total in Q1 2019 = approx. 9,400
- Total in Q1 2023 = approx. 16,900

## **Good indicators for the remainder of the year – Keep up the good work!**

- State and national social media campaigns and mentions - Visibility
- Local programs using PrepConnect and local outreach

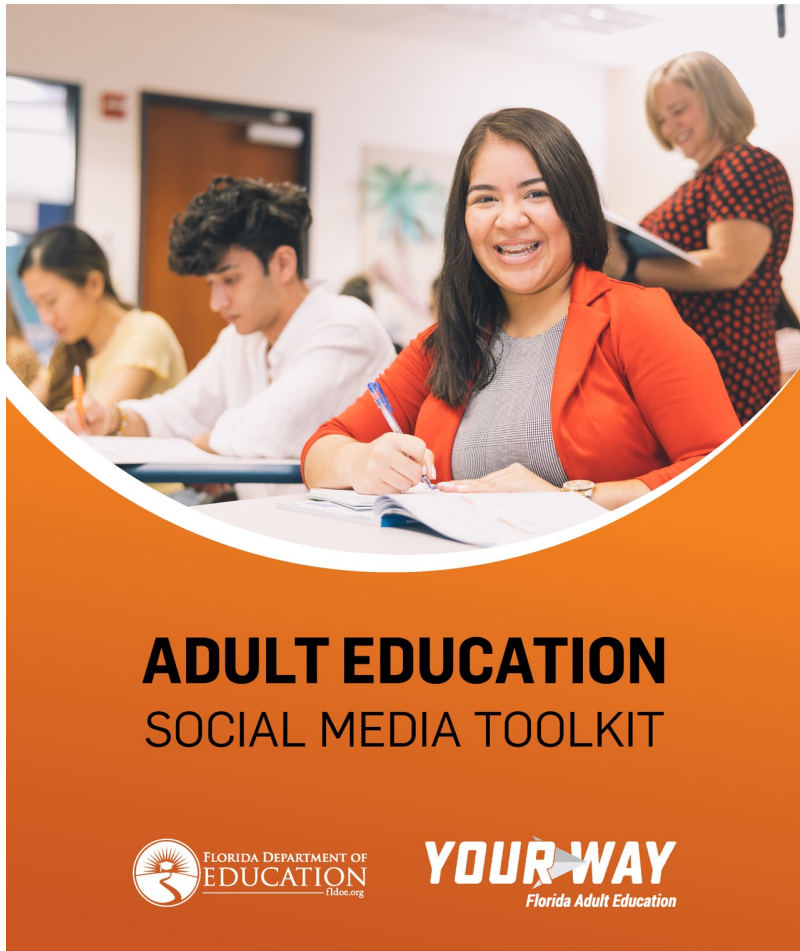


# GED® Testing Questions?

- Email [flgedhelp@fldoe.org](mailto:flgedhelp@fldoe.org)
- Phone (850) 245-0449
- Phone toll free in Florida (877) 352-4331
- When calling, press “0” to reach a customer service representative and bypass the recording.

# Outreach & Recruitment

Samantha Dudley  
Director, Outreach and Recruitment  
[Samantha.Dunaway@fldoe.org](mailto:Samantha.Dunaway@fldoe.org)



[AdultEducationFL.com](http://AdultEducationFL.com)

## Table of Contents



These social media assets were designed as part of the Your Way initiative, a campaign dedicated to elevating high school equivalency diplomas and English for Speakers of Other Languages (ESOL) programs as viable options for educational prosperity for adults in Florida.

<b>ABOUT THE YOUR WAY INITIATIVE</b>	<b>3</b>
<b>HOW TO SUPPORT YOUR WAY ACROSS SOCIAL MEDIA</b>	<b>4</b>
<b>SAMPLE SOCIAL MEDIA CONTENT TO PROMOTE HIGH SCHOOL DIPLOMA PROGRAMS</b>	<b>5</b>
<b>SAMPLE SOCIAL MEDIA CONTENT TO PROMOTE ENGLISH SPEAKERS OF OTHER LANGUAGES PROGRAMS</b>	<b>7</b>
<b>SAMPLE SOCIAL MEDIA CONTENT FOR THOSE INTERESTED IN SHARING THE YOUR WAY INITIATIVE</b>	<b>9</b>

# Your Way Social Media Toolkit

- Scan the QR code below to access the Your Way Social Media Toolkit.



**Scan the QR  
Code here!**

# Marketing Resources Guide

- In addition to the resources available to you in the Get There Action Toolkit, we've created a [free marketing resources guide](#).
- This guide includes:
  - Information on the different social media networks and best usage for each
  - Free resources for:
    - Social media scheduling
    - Social media listening and hashtag research
    - Email marketing
    - Graphic design tools
    - Stock photography and images

## FREE MARKETING RESOURCES

Please note these resources are a suggestion. The Florida Department of Education does not endorse any of the resources listed.

### Social Media Platforms

Effective engagement and outreach focuses on intentional and tailored messaging. Consider your audience, objectives and overall message to select the platform best suited for your organization. It is recommended to pick three platforms and focus your effort there instead of spreading yourself thin across all platforms.

#### Facebook

▶ A social media platform where people can follow friends, family and public figures/pages as well as join groups on topics that interest them. To strengthen your engagement on Facebook, find local groups to join. This allows you an opportunity to directly connect with your prospective audience by sharing relevant updates and information. Generally, hashtag use is discouraged here unless using a single hashtag for a specific event such as #AdultEducationandFamilyLiteracyWeek.

#### ▶ AUDIENCE USE:

Percentage of demographic that uses this platform, according to a 2021 Pew Research Study:

- Ages 18-29: 70%
- Ages 30-49: 77%
- Ages 50-64: 73%

#### Instagram

▶ A video and photo based social media platform. Posts can include up to 30 hashtags, and we recommend using all 30. You can also post stories in full-screen photo or video content that disappears in 24 hours, but can be pinned to profile after. Other Instagram video features include reels, 60 second videos designed as "teaser or "sneak peek" content on Instagram.

#### ▶ AUDIENCE USE:

Percentage of demographic that uses this platform, according to a 2021 Pew Research Study:

- Ages 18-29: 71%
- Ages 30-49: 48%
- Ages 50-64: 29%

#### YouTube

▶ A platform for sharing videos. YouTube is best suited for longer video content and streaming. YouTube videos can be embedded into websites, shared on other social platforms and offer versatility in digital outreach.

#### ▶ AUDIENCE USE:

Percentage of demographic that uses this platform, according to a 2021 Pew Research Study:

- Ages 18-29: 95%
- Ages 30-49: 91%
- Ages 50-64: 83%

#### Twitter

▶ A social media platform for sharing text, photo or video and linked content. Twitter is very much a "breaking news" platform where your content will get most of its views/interactions within the first 30 minutes of posting and not much after, so think carefully about the time of day to post. Local business and community leaders tend to be very active on Twitter. Using hashtags and tagging local education or legislative partners is a strategy to grow engagement.

#### ▶ AUDIENCE USE:

Percentage of demographic that uses this platform, according to a 2021 Pew Research Study:

- Ages 18-29: 42%
- Ages 30-49: 27%
- Ages 50-64: 18%

#### Snapchat

▶ A social media platform where posts disappear after being viewed. Can share photo or short video content. Snapchat separates friend content from brand/influencer content so users can control what they want to view.

#### ▶ AUDIENCE USE:

Percentage of demographic that uses this platform, according to a 2021 Pew Research Study:

- Ages 18-29: 65%
- Ages 30-49: 24%
- Ages 50-64: 12%

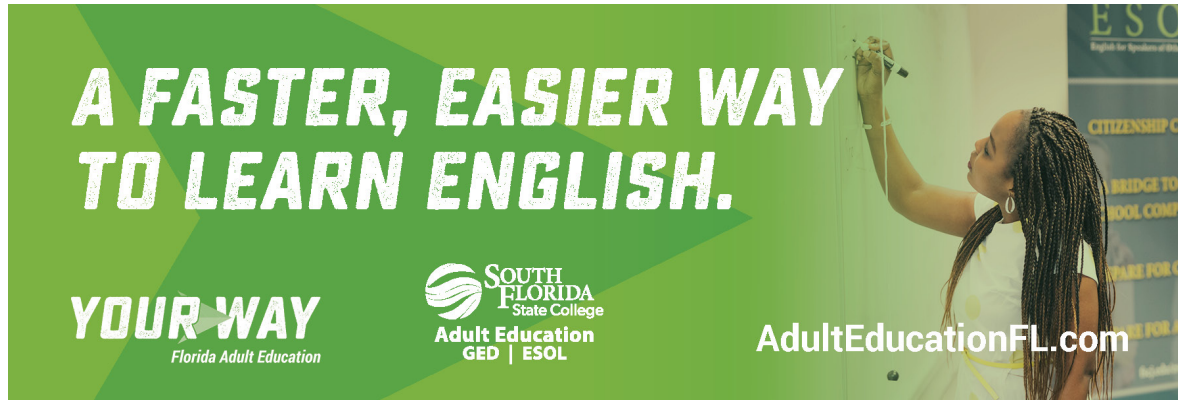
# Marketing Resources Guide

- Scan the QR code below to access the Marketing Resources Guide.



**Scan the QR  
Code here!**

# Interact With Us



**A FASTER, EASIER WAY  
TO LEARN ENGLISH.**

**YOUR WAY**  
Florida Adult Education

**SOUTH FLORIDA**  
State College  
Adult Education  
GED | ESOL

AdultEducationFL.com

ESOL  
English for Speakers of Other Languages  
CITIZENSHIP CLASS  
BRIDGE TO HIGH SCHOOL COMPLETION  
PREPARE FOR COLLEGE



**THERE'S MORE THAN ONE  
WAY TO EARN A DIPLOMA.**

**YOUR WAY**  
Florida Adult Education

**SOUTH FLORIDA**  
State College  
Adult Education  
GED | ESOL

AdultEducationFL.com



# Policy & Performance Updates

Ashley Yopp  
Bureau Chief, Adult Education  
Ashley.Yopp@fldoe.org

# 2023-24 State Performance Targets

State Performance Targets	
Minimum Performance Levels for Florida Adult Education Programs	
<b>Measurable Skill Gain (MSG)</b>	
• EFL completion measured on pre- and post-test	<b>Overall</b> 28.7%  <b>ABE</b> 29.3% <b>ESL</b> 28.2%
• Enrollment in postsecondary education after exit	
• Receipt of recognized secondary credential or equivalent	
• Progress toward milestones	
• Passing a technical/occupational knowledge-based exam	
<b>Employment – 2<sup>nd</sup> Quarter After Exit</b>	31%
<b>Employment – 4<sup>th</sup> Quarter After Exit</b>	28%
<b>Median Earnings</b>	\$4,867
<b>Credential Attainment</b>	24%

# Importance of Social Security Number for Employability Tracking

## 1008.386 Florida student identification

- (1) When a student enrolls in a public school in this state, the district school board shall request that the student provide his or her social security number and shall indicate whether the student identification number assigned to the student is a social security number. A student satisfies this requirement by presenting his or her social security card or a copy of the card to a school enrollment official. However, a student is not required to provide his or her social security number as a condition for enrollment or graduation. The Commissioner of Education shall assist school districts with the assignment of student identification numbers to avoid duplication of any student identification number.
- (2) The department shall establish a process for assigning a Florida student identification number to each student in the state, at which time a school district may not use social security numbers as student identification numbers in its management information systems.

## Florida Education Identifier Assignment

- The Department has procedures for the assignment of Florida Education Identifiers as specified in Rule 6A-1.00141, Florida Administrative Code (F.A.C.)

# Impact on Student Data Tracking Capabilities

- The Department has no ability to track employment without access to a social security number (SSN). The FLEID assignment process can help ensure that access to the social security number is secured, but available for matching purposes.
- In a recent review of a cohort of adult education leavers, the Department had access to a valid social security number for 45.75% of school district students, and 78.38% of Florida College System (FCS) students.
  - 13 districts had valid SSNs for less than 50% of their leavers.
  - 2 colleges had valid SSNs for less than 50% of their leavers.
  - In several large urban districts:
    - Of 11,580 leavers, valid SSN was available for 32% of total.
    - Of 4,990 leavers, valid SSN was available for 14.7% of the total.
- When calculating an employment rate using the district leavers cohort, the employment rate for all leavers was 35.6%. When calculation using district leavers with a valid SSN, the employment rate was 71.3%. Similarly for FCS leavers, the employment rates for all leavers was 57%, but was 73.0% for leavers with a valid SSN.

# Underage Testing Waivers

- HB 265 modified s. 1003.435, F.S., High School equivalency diploma program subsection (4) to specify that a student cannot be required to enroll in any courses once they have reached the age of 16 to be granted an exemption to the age requirement for the High School Equivalency examination if they pass the GED practice test.
- In summer 2023, we will engage in rule development to align Rule 6A-6.0201, F.A.C., State of Florida High School Diplomas, as of January 1, 2014, with the new provisions. Once the rule is effective, we will provide additional technical assistance and guidance.
- Processing Age Waivers
  - Make sure you're using the most current waiver form (revised 5/7/2015)
    - Fillable PDF enabled in 2018
  - Please allow up to 3 business days for our office to process

# Adult General Education Performance Funding Incentive Funds



2023-24 Appropriation

• **\$5,000,000**

- Specific Appropriation 118
- These funds shall be spent on supporting or expanding integrated adult education and training programs; industry credential attainment for students; and instructional and student supports.
- The Department of Education shall establish program metrics and award amounts, administer the program, and allocate funds.
- Program funds are to be awarded to school districts and Florida College System institutions based upon the most recently available performance data

# Adult General Education Performance Funding Incentive Funds

Timelines for Release of Funds: Pending finalization

## Require Measures:

- Number of adults participating in adult basic education or English language acquisition who then earn a non-degree credential
- Number of adults earning high school equivalency, participating in adult high school or an adult education program who then complete a Florida College System program within 150 percent of calendar time.

# QR Code for All Other Adult Education Questions

## Adult Education Technical Assistance

- All Adult Education Technical Assistance Questions should be submitted to FDOE via the following link: <https://forms.office.com/r/4iTGrJ7979>
- This does not include any questions about the 2023-24 AEFLA RFP. Again, those questions should be submitted in writing to Mallory Martinez by June 5, 2023.



**Scan the QR  
Code here!**





# THANK YOU.