



Florida Adult Education

FLDOE Updates

June 10, 2024



Division of Career and Adult Education (DCAE) Distribution List for Memos and Other Important Communications

- A distribution list is maintained to ensure the proper contacts from each district, Florida College System (FCS) institution or other adult education program are receiving communications from DCAE.
- A maximum of 3 contacts per district/institution are permitted for each category on our distribution list; we encourage agencies to provide at least two contacts in the event of a sudden vacancy.
- Agencies should maintain internal distribution methods for important communications to ensure they are received by all interested individuals.
- When changes occur within your district/institution amongst those that hold spots on the distribution list, please provide us with those updates as promptly as possible.
- Send any updates to Abigail.Friedman@fldoe.org and further instructions will be provided.

Professional Learning Opportunities

Carol A. Bruner
Director, Adult Education Program Implementation
Carol.Bruner@fldoe.org



AdultEducationFL.com



ACE of Florida In-Person Professional Learning Opportunities

Conferences

- **2024 Southeast Regional ACE Conference**
 - **When:** October 7–9, 2024
 - **Where:** Sunseeker Resort – Charlotte Harbor, Florida
 - **Registration:** Coming soon on the ACE of Florida Website

IPDAE Professional Learning Opportunities

Tech Tuesday Webinars

- **Part IV – Teaching Listening: Vocabulary, Fluency and Comprehension**
 - *Date: June 25 | 12:00 pm – 1:00 pm ET*

Webinar Wednesday

- **Maximizing Impact with New CASAS Assessments**
 - *Date: June 26 | 3:00 pm – 4:00 pm ET*

Canvas Courses

- Introduction to Teaching Adult ESOL
- Teaching Adult ESOL Skills for Student Success
- New Administrator of Adult Education

Curriculum & Assessment Updates

Carol A. Bruner

Director, Adult Education Program Implementation

Carol.Bruner@fldoe.org



Florida Adult Education

AdultEducationFL.com



FLORIDA DEPARTMENT OF
EDUCATION
fldoe.org

Courses Scheduled for Deletion

Programs Ending at Close of 2023-2024 Reporting Year	Alternative Program at Start of 2024-2025 Reporting Year
GED®-I Comprehensive	GED® Comprehensive
English Literacy for Career and Technical Education (ELCATE)	Integrated into Adult ESOL Levels 5-6
Adult ESOL Literacy Skills*	Integrated into Adult ESOL Level 1
Applied Academics for Adult Education (AAAE)*	Academic Skills Building (ASB)
Adult ESOL College and Career Readiness (CCR)*	Transition to ABE, ASB, or GED® based on student's career and academic objectives
ABE Reading ABE Language	ABE Reasoning Through Language Arts

*Not eligible for federal funding

Overview of Adult Education Programs and Courses 2024-25

Adult Basic Education (NRS Levels ABE 1-4)

ABE Mathematics

ABE
Reasoning through Language
Arts (RLA)

Adult High School (NRS Levels ABE 5-6)

Adult High School (AHS)

*Adult High School Co-enrolled

GED® Preparation (NRS Levels ABE 5-6)

GED® Reasoning through
Language Arts

GED® Science

GED® Social Studies

GED® Math

GED® Comprehensive

English Speakers of Other Languages (NRS Levels ESL1-6)

Adult ESOL

Academic Skills Building (NRS Levels ABE 5-6)

ASB Mathematics

ASB Language Arts

Curriculum Frameworks

Curriculum Frameworks are available of the Florida Department of Education Website:

- [2024-2025 Adult Education Curriculum Frameworks \(fldoe.org\)](https://fldoe.org/curriculum-frameworks)

Assessment Approval Periods and Sunset Dates

Adult Basic Education (ABE) Test Names	Forms	NRS Approval Expiration Date	NRS Sunset Dates (see footnote)
CASAS Reading GOALS	Forms 901, 902, 903, 904, 905, 906, 907 and 908	2/5/2025	6/30/2025*
CASAS Math GOALS	Forms 900, 913, 914, 917 and 918	3/7/2024	6/30/2024
CASAS Math GOALS 2	Forms 921/922, 923/924, 925/926, 927/928 and 929/930	7/13/2030	6/30/2031*
TABE (11/12)	Forms 11 and 12	9/7/2024	6/30/2025*

* Although not yet determined, this date would be the anticipated sunset date based on sunset periods announced in previous NRS notices published in the Federal Register. In general, tests with expiring NRS approval dates that occurred during a program year have been permitted for use in the NRS until the end of the program year.

Federal Register Updates

On March 18, 2024, the Office of Career, Technical and Adult Education (OCTAE), Department of Education published a notice in the Federal Register announcing tests suitable for use in the National Reporting System for adult education.

[Tests Determined To Be Suitable for Use in the National Reporting System for Adult Education](#)

This notice announces an extension of the sunset period for ESL tests scheduled to sunset on June 30, 2024. This extension is intended to provide states with sufficient time to carry out the operational activities required for the transition to the new ESL assessments. The sunset period for **ESL** tests with expired NRS approvals is extended through **June 30, 2025**. Until that time, the current ESL educational functioning level descriptors and the new ESL educational functioning level descriptors will both be in effect.

Assessment Approval Periods and Sunset Dates

English as a Second Language (ESL) Test Names	Forms	NRS Approval Expiration Date	NRS Sunset Dates (see footnote)
BEST Literacy	Forms B, C and D	2/2/2024	6/30/2025
BEST Literacy 2.0	Forms 1, 2 and 3	7/13/2030	6/30/2031*
BEST Plus 2.0	Forms D, E and F	2/2/2024	6/30/2025
BEST Plus 3.0	Forms 1 and 2	7/13/2030	6/30/2031*
CASAS Reading (Life and Work, Life Skills, Citizenship, Reading for Language Arts – Secondary Level)	Forms 27, 28, 81, 82, 81X, 82X, 83, 84, 85, 86, 185, 186, 187, 188, 310, 311, 513, 514, 951, 952, 951X and 952X	2/2/2024	6/30/2025
CASAS Life and Work Listening	Forms 981L, 982L, 983L, 984L, 985L and 986L	2/2/2024	6/30/2025
CASAS Reading STEPS	Forms 621/622, 623/624, 625/626, 627/628 and 629/630	7/13/2030	6/30/2031*
CASAS Listening STEPS	Forms 621/622, 623/624, 625/626, 627/628 and 629/630	7/13/2030	6/30/2031*
TABE CLAS-E	Forms A and B	2/2/2024	6/30/2025

* Although not yet determined, this date would be the anticipated sunset date based on sunset periods announced in previous NRS notices published in the Federal Register. In general, tests with expiring NRS approval dates that occurred during a program year have been permitted for use in the NRS until the end of the program year.

CASAS Math GOALS 2 and STEPS: What's New?

- Updated test content
- All series now have five levels
- The new series are based on the most current National Standards
 - Math GOALS 2 – Based on the Adult Education College & Career Readiness Standards
 - Reading and Listening STEPS – Based on the Adult Education English Language Proficiency Standards
- Simplified Reports

CASAS Math GOALS 2

Greater Opportunities for Adult Learning Success

	Math GOALS	Math GOALS 2
National Reporting System (NRS) Levels	ABE 1-6	ABE 1-6
Content Standards	College and Career Readiness Standards for Adult Learners (CCRS) CASAS Competencies	College and Career Readiness Standards for Adult Learners (CCRS) CASAS Competencies
Test Levels	2 forms: A/B, C/D	5 forms: A, B, C, D, E

CASAS Reading GOALS

- Current CASAS Reading GOALS has approval through June 2025.
- CASAS Reading GOALS 2 is currently undergoing field testing from October 2023 to June 30, 2024.
- More information on Reading GOALS 2 will become available from CASAS in the spring of 2025.

CASAS STEPS

Student Test of English Progress and Success

- CASAS STEPS is replacing CASAS Life and Works testing series.

	Life and Work		STEPS	
	Reading	Listening	Reading	Listening
National Reporting System (NRS) Levels	ESL 1-6	ESL 1-6	ESL 1-6	ESL 1-6
Proficiency Standards	CASAS Content Standards – Reading	CASAS Content Standards – Listening	English Language Proficiency (ELP) Standards for Adult Education	English Language Proficiency (ELP) Standard for Adult Education
	CASAS Competencies	CASAS Competencies	CASAS Competencies	CASAS Competencies
Test Levels	4 Levels A-D	3 Levels A-C	5 Levels A-E	5 Levels A-E

CASAS Online Training

- To learn more about the new CASAS test series please visit the CASAS website: www.casas.org.
- To access online trainings on CASAS assessments, please visit the link for [CASAS Training and Resources](#).

TABE

- **TABE CLAS-E** expires on 6/30/2025
 - *On March 18, 2024, OCTAE extended the sunset date published in the Federal Register.*
- **TABE 11 & 12** expires 6/30/2025
- TABE CLAS-E forms C & D and TABE 13 & 14 were submitted for review by the NRS on October 1, 2023

BEST

Basic English Skills Test

- BEST Plus 3.0 and BEST Literacy 2.0 is replacing BEST Plus 2.0 and BEST Listening testing series.

	BEST (old)		BEST (new)	
	Plus 2.0	Literacy	Plus 3.0	Literacy 2.0
	ESL 1-6	ESL 1-6	ESL 1-6	ESL 1-4
	National Reporting System (NRS) Levels			
	Formats			
	Computer adaptive version	Print-based	Computer adaptive version	Print-based
	Semi-adaptive print-based version		Semi-adaptive print version	

Assessment Transitions Updates

Adult Basic Education

Expiring Assessment	Sunset Date	New Assessment	Transition Before
CASAS Math GOALS	6/30/2024	CASAS Math GOALS 2	7/1/2024
CASAS Reading GOALS	6/30/2025*	CASAS Reading GOALS 2	Pending NRS approval
TABE 11 & 12	6/30/2025*	TABE 13 & 14	Pending NRS approval

* Although not yet determined, this would be the anticipated sunset date based on sunset periods announced in previous NRS notices published in the Federal Register.

English for Speakers of Other Languages

Expiring Assessment	Sunset Date	New Assessment	Transition Before
CASAS Reading Life & Works	6/30/2025	CASAS Reading STEPS	7/1/2025
CASAS Listening Life & Works	6/30/2025	CASAS Listening STEPS	7/1/2025
BEST Literacy	6/30/2025	BEST Literacy 2.0	7/1/2025
BEST Plus 2.0	6/30/2025	BEST Plus 3.0	7/1/2025
TABE CLAS-E (1st Ed.)	6/30/2025	TABE CLAS-E (2nd Ed.)	Pending NRS approval

CASAS Math Assessment Transitions

Expiring Assessment	Sunset Date	New Assessment	Transition Before
CASAS Math GOALS	6/30/2024	CASAS Math GOALS 2	7/1/2024

New Students

All new students should be **pre-tested** on the new CASAS Math GOALS 2 assessment for enrollment, starting with your agency's **2024-25 summer term**.

Continuous Students

Students should have **post-tested** using the expiring CASAS Math GOALS assessment during your agency's **2023-24 spring term**. For placement in your **2024-25 summer term**, students should be **pre-tested** using the new CASAS Math GOALS 2.

Providers **must post-test** students on the expiring CASAS Math GOALS by **June 30, 2024**.

- Students who are not **pre-tested** on the new CASAS Math GOALS 2 will not be NRS reportable for program year 2024-2025.

Planning for ESOL Assessment Transitions

Expiring Assessment	Sunset Date	New Assessment	Transition Before
CASAS Reading Life & Works	6/30/2025	CASAS Reading STEPS	7/1/2025
CASAS Listening Life & Works	6/30/2025	CASAS Listening STEPS	7/1/2025
BEST Literacy	6/30/2025	BEST Literacy 2.0	7/1/2025
BEST Plus 2.0	6/30/2025	BEST Plus 3.0	7/1/2025
TABE CLAS-E (1st Ed.)	6/30/2025	TABE CLAS-E (2nd Ed.)	N/A

New Students

For providers planning to use the new CASAS STEPS or BEST assessments:

- All new students should be **pre-tested** on the new assessments starting with your agency's **2024-25 summer term**.

For providers planning to use the new TABE CLAS-E (2nd Ed.) assessment series:

- Continue using TABE CLAS-E (1st Ed.) for pre- and post-testing.

Planning for ESOL Assessment Transitions

Expiring Assessment	Sunset Date	New Assessment	Transition Before
CASAS Reading Life & Works	6/30/2025	CASAS Reading STEPS	7/1/2025
CASAS Listening Life & Works	6/30/2025	CASAS Listening STEPS	7/1/2025
BEST Literacy	6/30/2025	BEST Literacy 2.0	7/1/2025
BEST Plus 2.0	6/30/2025	BEST Plus 3.0	7/1/2025
TABE CLAS-E (1st Ed.)	6/30/2025	TABE CLAS-E (2nd Ed.)	N/A

Continuous Students

For providers planning to use the new CASAS STEPS or BEST assessments:

- Providers should be **post-testing** students on the expiring ESOL assessments and **pre-testing** students on the new ESOL assessments for placement into the **2024-25 summer** or **2024-25 fall terms**. By the end of your agency's **2024-25 fall term**, your goal should be to have all ESOL students transitioned to the new assessments.

For providers planning to use the new TABE CLAS-E (2nd Ed.) assessment series:

- Continue using TABE CLAS-E (1st Ed.) for pre- and post-testing.

Points to Consider When Planning for Assessment Transition

All **New** Adult Education students should be pre-tested on the new assessments for 2024-25 course enrollment.

Students may see a change in their EFL on the new assessments.

- Students **must** be enrolled in courses that align with their EFL as determined by the new assessments, regardless of previous enrollment.

To be post-tested, students **must** meet the required minimum hours of instruction as outlined in the Technical Assessment Policy.

- Providers are encouraged to take this into consideration when planning their transition to a new assessment.
- Post-tests administered on expiring assessments after their June 30 sunset date will not be reportable.

Adult General Education Pathway	
Course	ABE NRS EFL
ABE	Levels 1 - 4
Adult Skills Building	Levels 5 - 6
GED Preparation	

English Speakers of Other Languages Pathway	
Course	ESL NRS EFL
Adult ESOL	Levels 1 - 6

Anticipate and Plan for Future Assessment Transitions

Adult education providers should anticipate additional assessment transitions in the future for:

Expiring Assessment	Sunset Date	New Assessment	NRS Approved
CASAS Reading GOALS	6/30/2025*	CASAS Reading GOALS 2	No
TABE 11 & 12	6/30/2025*	TABE 13 & 14	No
TABE CLAS-E (1 st Ed.)	6/30/2025	TABE CLAS-E (2 nd ED.)	No

* Although not yet determined, this would be the anticipated sunset date based on sunset periods announced in previous NRS notices published in the Federal Register.

Updates will be provided to agencies as new information becomes available.

Integrated Education & Training

Catherine L. O'Neil
Director, Integrated Education & Training (IET)
Catherine.O'Neil@fldoe.org



Florida Adult Education

AdultEducationFL.com

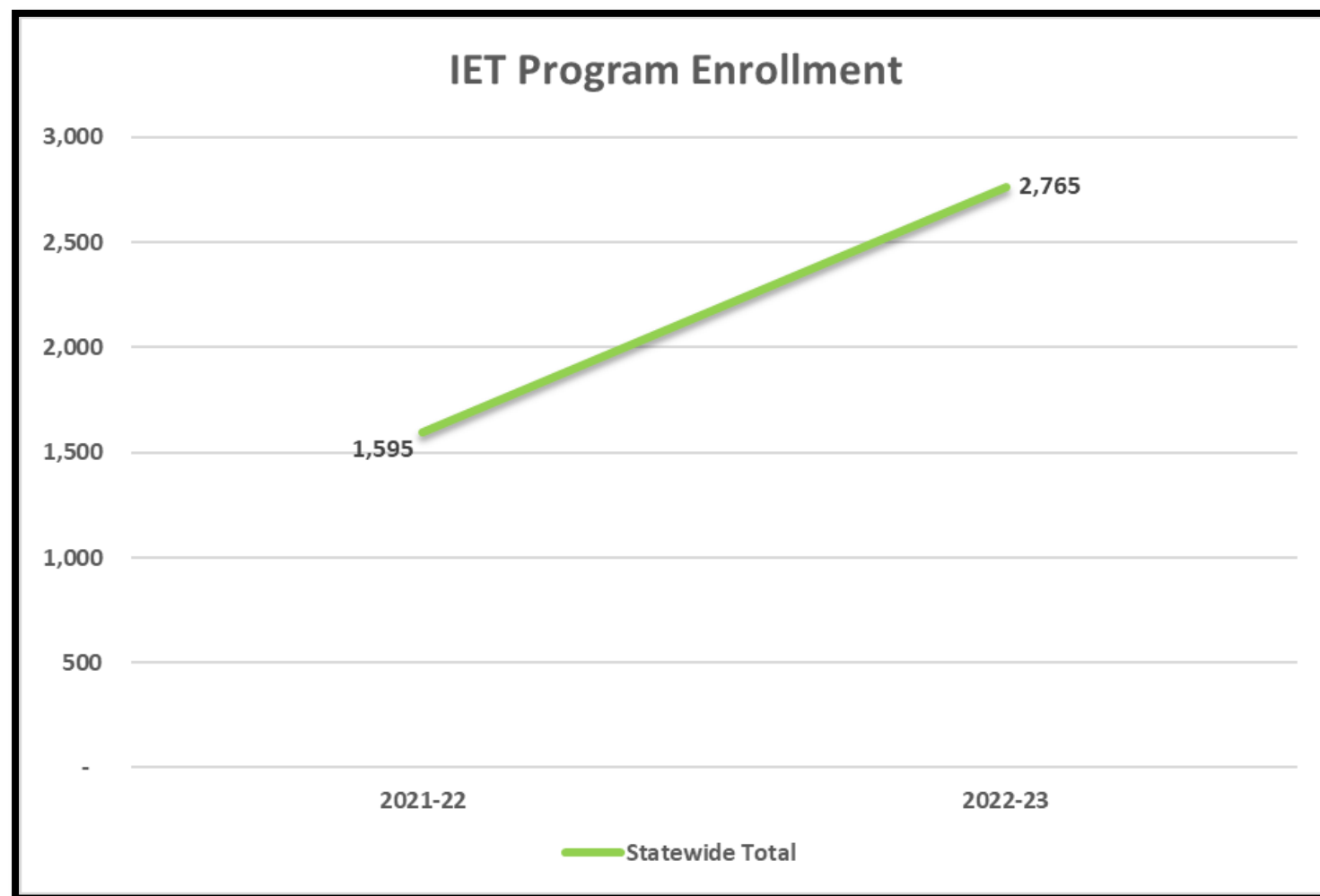


FLORIDA DEPARTMENT OF
EDUCATION
fldoe.org

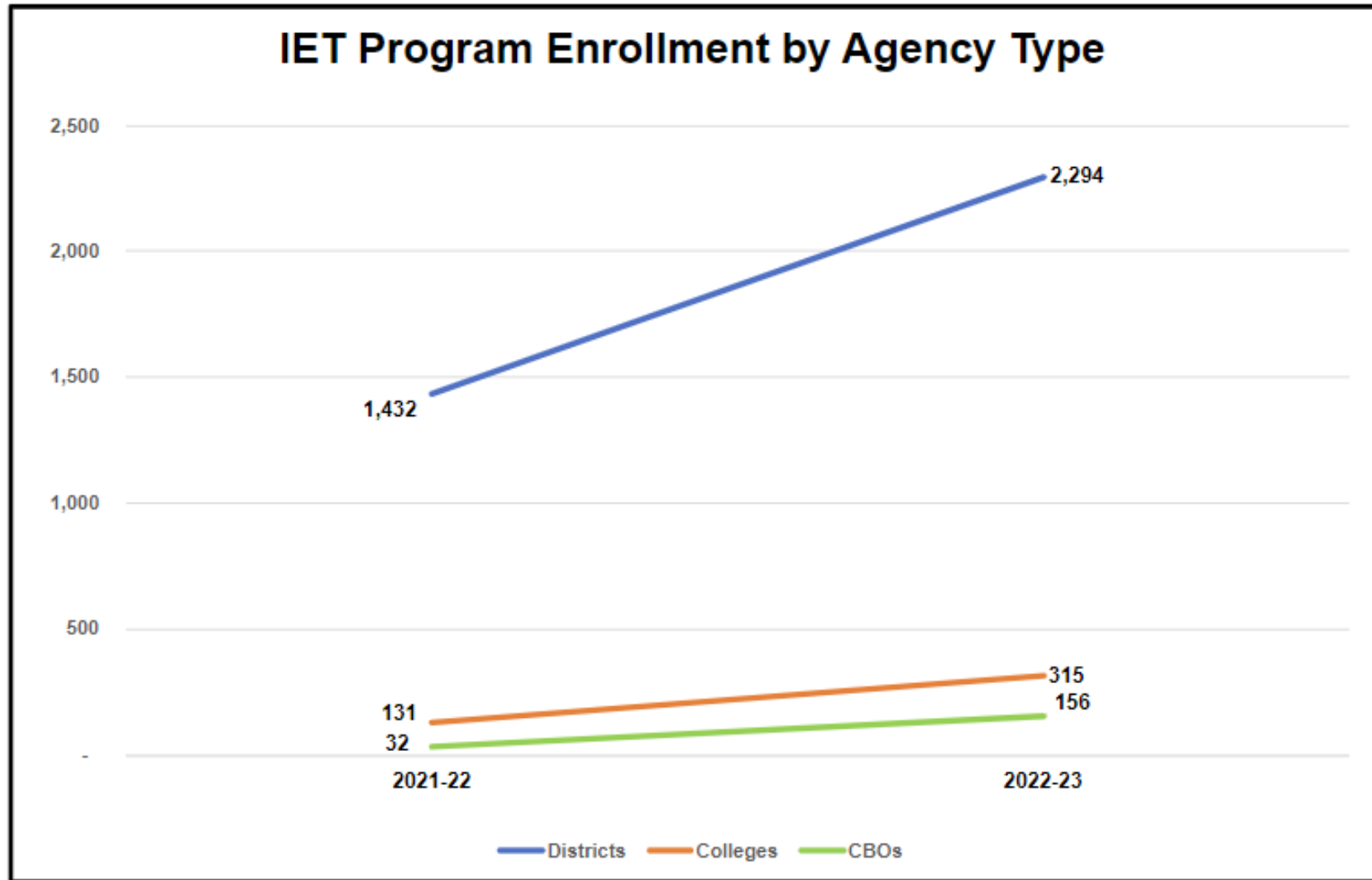
Elevating IET: Strategies & Success Stories

Catherine L. O'Neil
Director, Integrated Education & Training (IET)
Catherine.O'Neil@fldoe.org

IET: A Review of the Numbers, 2021-22; 2022-23



IET: A Review of the Numbers, 2021-22; 2022-23



IET: A Review of the Numbers, 2023-24

Number of Active IET Programs by Agency Type

Agency Type	2023-2024 IET Programs
CBO	2
District	95
College	18
Total	115

**As of end of Fall term data*

IET: A Review of the Numbers, 2023-24

Active IET Program Enrollment by Agency Type

Agency Type	2023-2024 IET Enrollment
CBO	17
District	1,559
College	124
Total	1,700

**As of end of Fall term data*

Adult Education Measurable Skill Gains

There are five Measurable Skill Gains (MSG) types available to adult education students.

1. Educational Functioning Level (EFL) Gain
 - 1a. Pre and posttest gains
 - 1b. Awarding of Carnegie Unit Credit
 - 1c. Entry into a postsecondary education or training program after program exit
2. Secondary school diploma or equivalent attainment
- 3. Postsecondary transcript;**
- 4. Progress Toward Milestone;**
- 5. Passing a technical or occupational knowledge-based exam.**

Traditional adult education students may earn gains one and two, only.

IET students, only, may additionally earn MSG types three, four, and five.

MSG # 3 – Postsecondary Transcript

Current IET programs with this MSG available to students.

Career Cluster	# of IET Programs
Architecture & Construction	28
Arts, A/V, Technology & Communication	2
Business Management & Administration	14
Education & Training	2
Finance	1
Health Science	32
Hospitality & Tourism	6

Career Cluster	# of IET Programs
Human Services	2
Information & Technology	12
Law, Public Safety & Security	1
Manufacturing	9
Transportation, Distribution & Logistics	23

**As of May 28, 2024*

MSG # 4 – Progress Toward Milestone

Current IET programs with this MSG available to students.

Career Cluster	# of IET Programs
Architecture & Construction	13
Information Technology	2
Manufacturing	4
Transportation, Distribution & Logistics	3

**As of May 28, 2024*

MSG # 5 – Industry Certification

- Earning of an approved industry certification credential.
- Measurable skill gains for industry certification earning may only occur if an industry certification appears on either of the following lists.
 - [Master credential list](#)
 - [Perkins recognized postsecondary credential list](#)
- Programs are encouraged to consider employment needs in their region when developing IET programs and related credentials. Industry certifications not represented on either of these lists may also be approved for inclusion in an IET program. If approved however, the credentials cannot be used toward the calculation of the IET industry certification MSG but will serve as added value for the student.
- Please ensure that all approved industry certifications for your agency's IET program are accounted for in the IET Program Number Appendix.
 - WDIS Appendix P
 - CCTCMIS Appendix D
 - Community Based Organization (CBO) Appendix G
- **Industry certification retirement and update process**

MSG # 5 – Industry Certification

Current IET programs with this MSG available to students.

Career Cluster	# of IET Programs
Agriculture, Food & Natural Resources	1
Architecture & Construction	72
Arts, A/V Technology & Communications	3
Business Management & Administration	41
Education & Training	33
Finance	3
Health Science	141

Career Cluster	# of IET Programs
Hospitality & Tourism	40
Human Services	11
Information Technology	29
Law, Public Safety, & Security	1
Manufacturing	23
Marketing, Sales & Service	8
Transportation, Distribution & Logistics	49

**As of May 28, 2024*

IET Enrollment by Career Cluster

Career Cluster	Reported Enrollment for 23-24	Career Cluster	Reported Enrollment for 23-24
Agriculture, Food & Natural Resources	0	Hospitality & Tourism	46
Architecture & Construction	130	Human Services	11
Arts, A/V Technology & Communications	0	Information Technology	68
Business Management & Administration	248	Law, Public Safety & Security	0
Education & Training	225	Manufacturing	37
Energy	0	Marketing, Sales & Services	0
Finance	6	Transportation, Distribution & Logistics	61
Health Science	868	Total Reported Enrollment	1,700

**As of May 28, 2024*

2023-24 Top 5 Career Clusters for IET Programs based on Enrollment

Career Cluster
Health Science
Business Management & Administration
Education & Training
Architecture & Construction
Information Technology

**As of May 28, 2024*

2024-2025 Master Credentials List

- 2024-2025 Master Credentials List is available at the link below:

https://careersourceflorida-my.sharepoint.com/:x:/g/personal/mconover_careersourceflorida_com1/ES4UR16ZPtBHjg-acmyW78wBZht47n1ACAxrMjZe5B08tA?e=DrAOrH

- New credentials have been added to the 24-25 MCL.
- Please reference these new additions for future IET program of study submissions and/or updates to existing IET programs for MSG Type 5.

2024-2025 Master Credentials List

- Credentials identified for removal on the 25-26 MCL are also on the 24-25 MCL.
- Removal of credentials will impact ability to claim MSG Type 5 in 25-26 PY.
 - *Start planning now for these changes.*

2024-2025 Master Credentials List Industry Certifications

Credential applications are received throughout the year and evaluated on a quarterly basis for inclusion on the state Master Credentials List. This version of the 2024-2025 Master Credentials List includes the credentials approved by the Credentials Review Committee on Feb. 21, 2024. Eligibility for secondary level CAPE funding is determined by the State Board of Education and is captured on the CAPE Industry Certification Funding List (<https://www.fldoe.org/academics/career-adult-edu/cape-secondary/cape-industry-cert-funding-list-current.stml>).

Yellow Highlights = Credential is identified for removal on the 2025-2026 MCL. See Notes column for details.

Green Highlights = Credential is new to the MCL in 2024-2025.

*Eligibility for secondary level CAPE funding is determined by the State Board of Education and is captured on the CAPE Industry Certification Funding List (<https://www.fldoe.org/academics/career-adult-edu/cape-secondary/cape-industry-cert-funding-list-current.stml>).

FDOE Certification Code	Certification Title	Certifying Agency Name	New to the 24-25 MCL	Eligible for Post-Secondary CAPE Funding?	Degree or Non Degree Designation	SOC Code Linkage(s)	Major SOC Code	Major SOC Title	Representative SOC Code	Pass Demand Criteria	Pass Wage Criteria	Credential Identified for Removal on 25-26 MCL
KNOWL010	T-SQL Coding Specialist	Knowledge Pillars Inc.	No	No	Non Degree	15-1251; 15-2098	15-0000	Computer and Mathematical Occupations	15-1251	No	Yes	Yes
N/A	Unity Certified Associate: Artist	Unity Technologies	Yes	No	Non Degree	27-1014	27-0000	Arts, Design, Entertainment, Sports, and Media Occupations	27-1014	Yes	Yes	No
N/A	Unity Certified Associate: Game Developer	Unity Technologies	Yes	No	Non Degree	15-1251; 15-1255; 27-1014	15-0000; 27-0000	Computer and Mathematical Occupations; Arts, Design, Entertainment, Sports, and Media Occupations	27-1014	Yes	Yes	No
UNITY003	Unity Certified User: Artist	Unity Technologies	No	No	Non Degree	27-1014	27-0000	Arts, Design, Entertainment, Sports, and Media Occupations	27-1014	Yes	Yes	No

<
>
≡
Degree Programs of Study
Non-Degree Programs of Study
Apprenticeships
Industry Certifications
K-8 CAPE Digital Tools
Credentials Removed
+

IET Appendices

Please verify that all information is accurate for IET programs.

IET Programs of Study that are approved provide the data for each field of the IET Program Number appendix.

WDIS: [Appendix P](#)

CCTMIS: [Appendix D](#)

CBO: [Appendix G](#)

FLORIDA DEPARTMENT OF EDUCATION WORKFORCE EDUCATION DATA SYSTEMS INTEGRATED EDUCATIONAL TRAINING Appendix P - 2022-2023 (07/01/2022)													
IET Program Number	IET Program Name	District #	District Name	County Served	IET IC MSG Eligible	Cert Code 1	Cert Code 1 Title	Cert Code 2	Cert Code 2 Title	Cert Code 3	Cert Code 3 Title	Cert Code 4	Cert Code 4 Title
2021101	Baker County School District Nursing Assistant AGE	02	Baker County School District	Baker	Y	FDMQA002	Certified Nursing Assistant (CNA)						
2021102	Baker County School District Phlebotomy AGE	02	Baker County School District	Baker	Y	NATHA007	Certified Phlebotomy Technician (CPT)						
2023041	Baker County School District Information Technology CORR	02	Baker County School District	Baker	Y	INTUT002	Entrepreneurship & Small Business						
2031151	Bay County School District Welding AGE	03	Bay County School District	Bay	Y	NCCER061	NCCER Welding - Level 1	NCCER062	NCCER Welding - Level 2 (Secondary)	NCCER265	NCCER Welding - Level 3 (Postsecondary)		
2031171	Bay County School District Automotive AGE	03	Bay County School District	Bay	Y	NIASE017	ASE Collision Repair and Refinishing Technician: Mechanical and Electrical Components (B5)	NIASE018	ASE - Non-structural Analysis and Damage Repair (B3)	NIASE029	ASE Collision Repair and Refinishing Technician: Painting and Refinishing (B2)	NIASE032	ASE - Structural Analysis and Damage Repair (B4)
2041101	Bradford County School District Nursing Assistant AGE	04	Bradford County School District	Bradford	Y	FDMQA002	Certified Nursing Assistant (CNA)						
2041102	Bradford County School District Medical Administrative Assistant AGE	04	Bradford County School District	Bradford	Y	NATHA003	Certified Medical Administrative Assistant (CMAA)						
2051022	Brevard County School	05	Brevard County School	Brevard	Y	MSSCN001	MSSC Certified						

All IET appendices are updated monthly.

Assessment in IET Programs

- All IET participants must be **pre-tested** and **enrolled** in an adult education course.
- IET participants enrolled in CTE career certificate programs, 450 clock hours or longer, are *required* to be assessed for basic skills.
- Develop a timeline for post-testing and attempting industry certifications to better ensure completion within the program year.
 - Only MSGs that occur within the program year count toward current year NRS outcomes.

Meaningful Growth in IET Programs

IET programs should be designed to address labor market needs for the county/region.

Providers should actively market, recruit and enroll students in state-approved IET programs to increase the number of adults learners who earn a non-degree credential.

Research & Evaluation

Dr. Brittany C. Ross

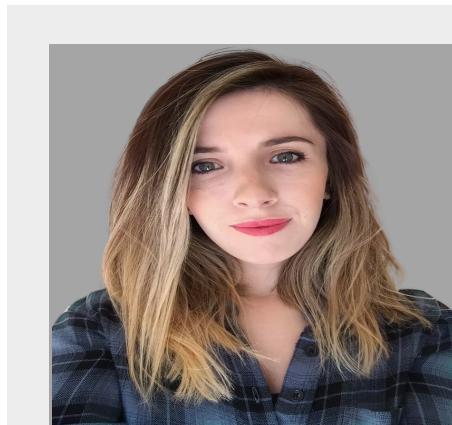
Director, Research & Evaluation

Brittany.Ross@fldoe.org

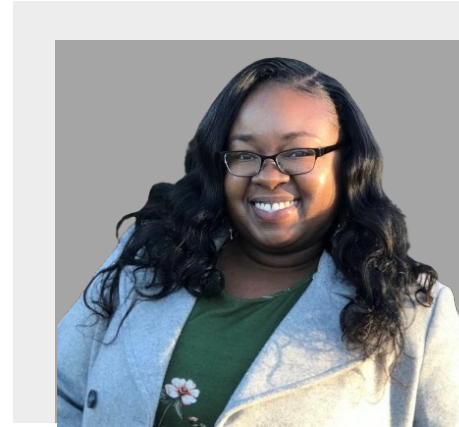
Division of Career and Adult Education (DCAE) Office of Research & Evaluation Staff



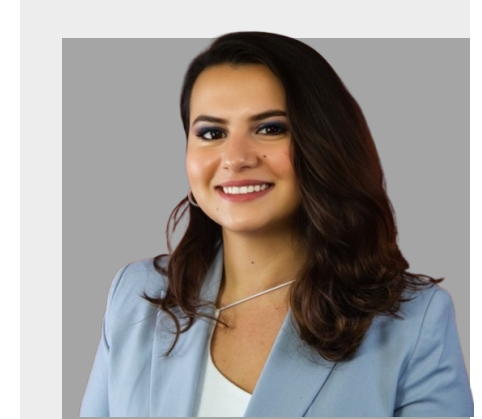
Director
Dr. Brittany C. Ross



**Educational Policy Analyst,
CTE Specialist**
Dr. Merve Pamuk-Quick



**Educational Policy Analyst,
Adult Education Specialist**
Ashley Cooper



Program Specialist IV
Gizem Solmaz-Ratzlaff

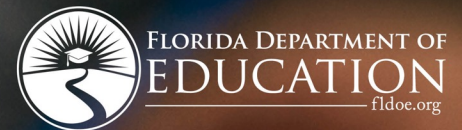
Agenda

- Year in Review
- Data Reporting Updates
- Assessment Updates & Related Accountability
- Data Reporting & Assessment Policy
- IET Updates
- Performance-Based Funding Updates
- Reporting Resources

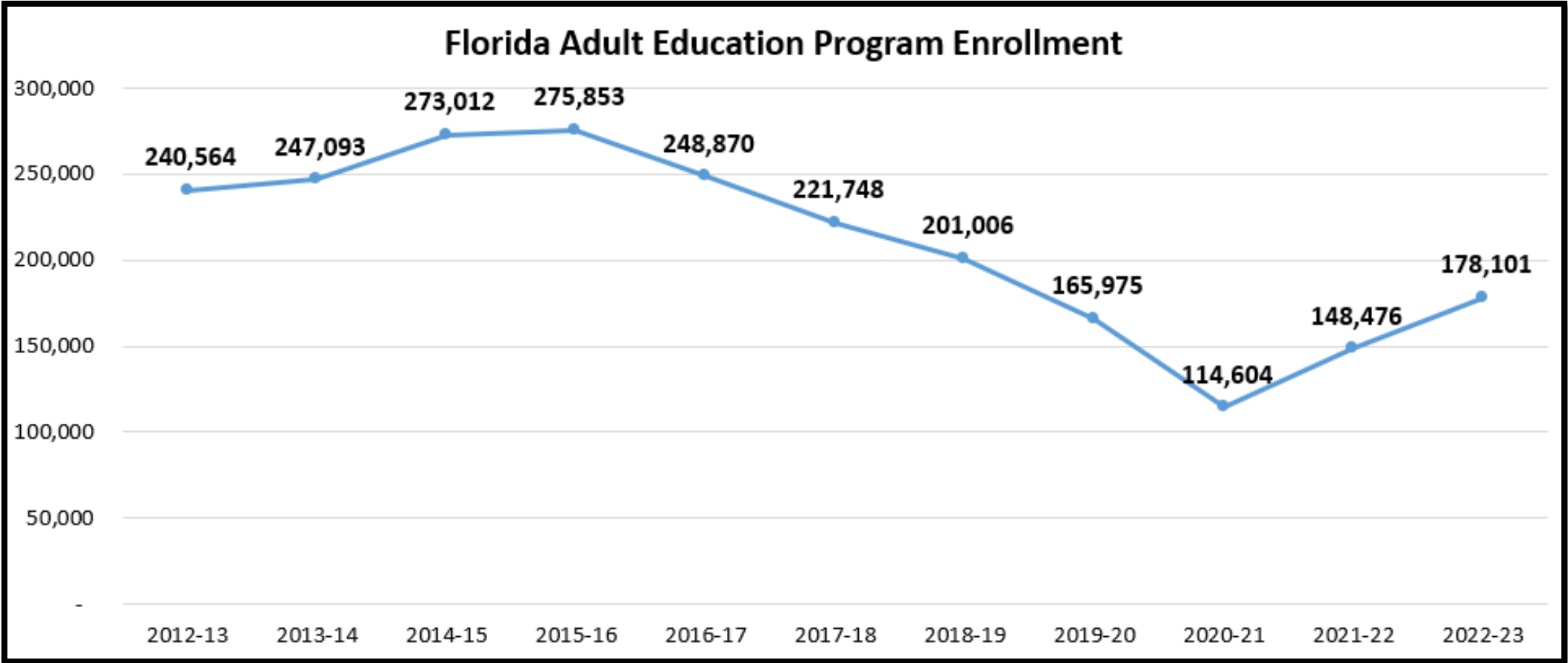
Year in Review



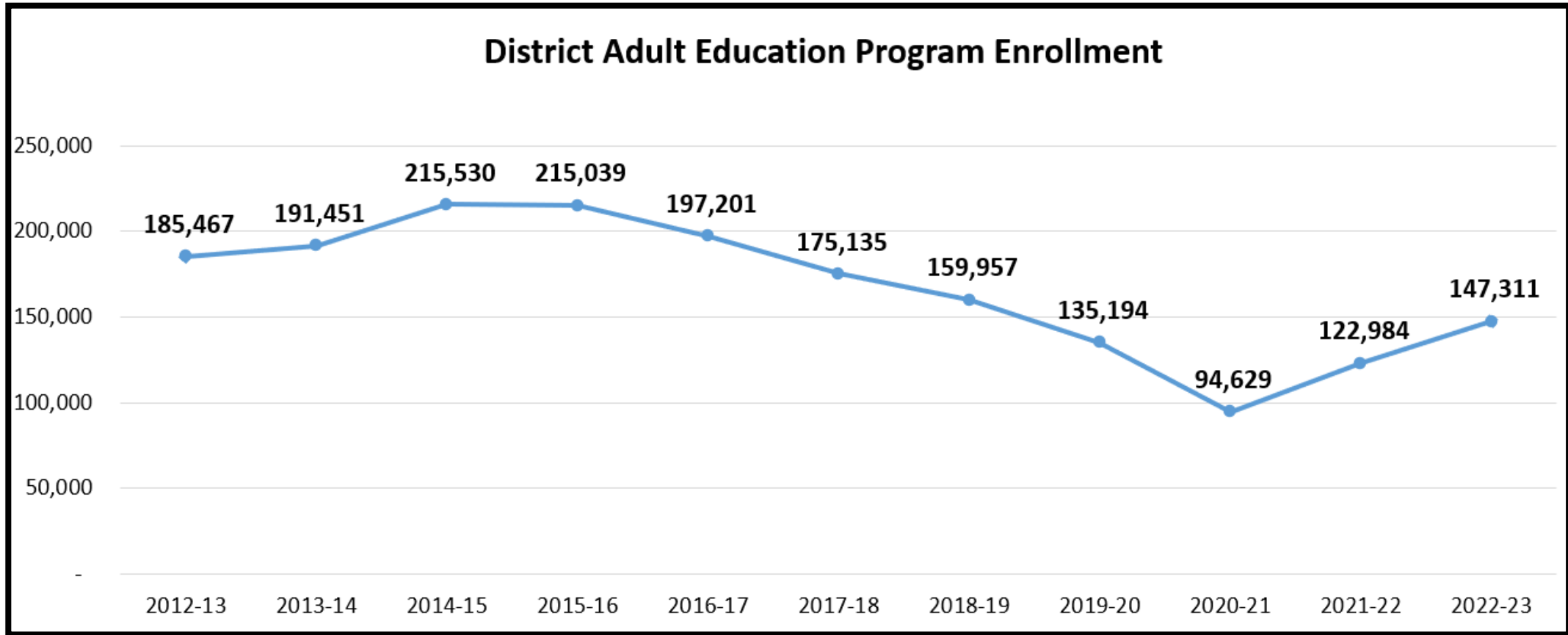
AdultEducationFL.com



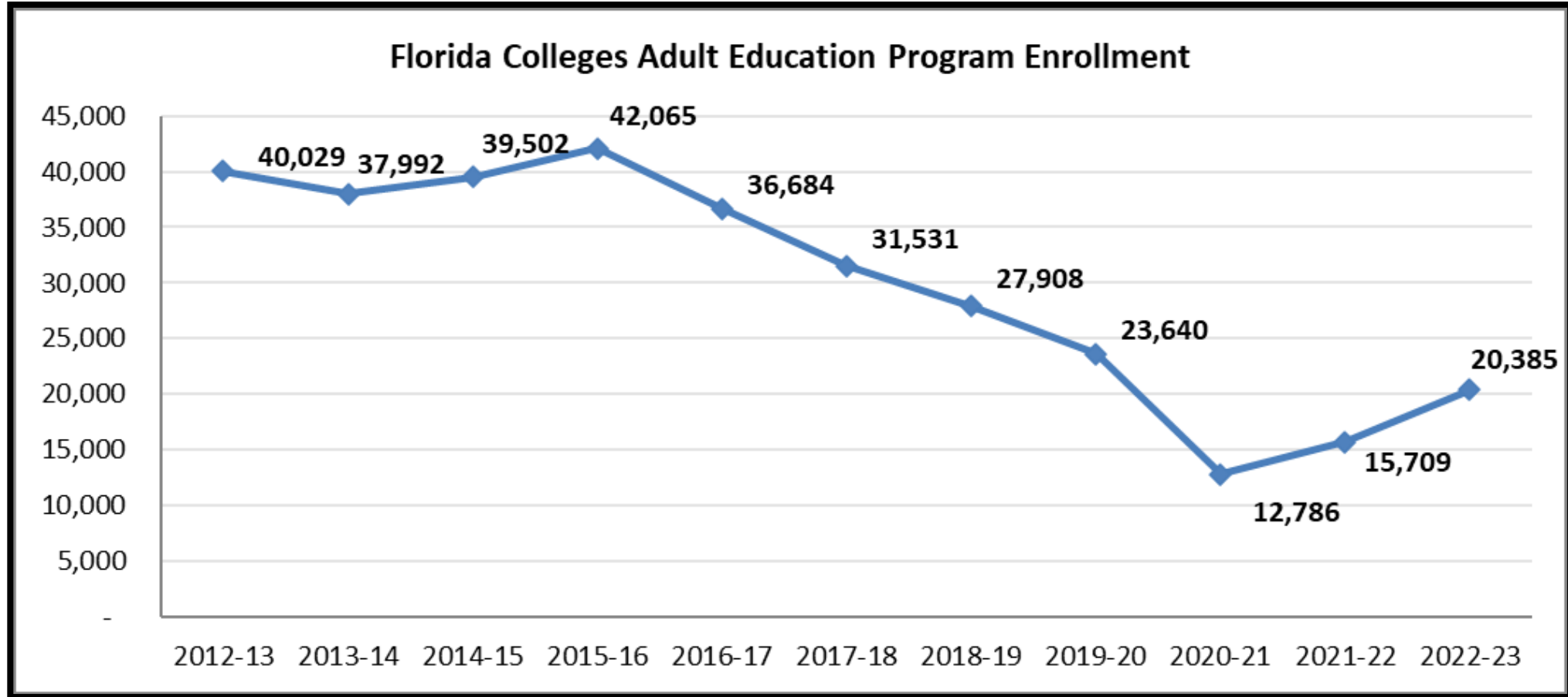
Adult Education Program Enrollment 2012-13 to 2022-23



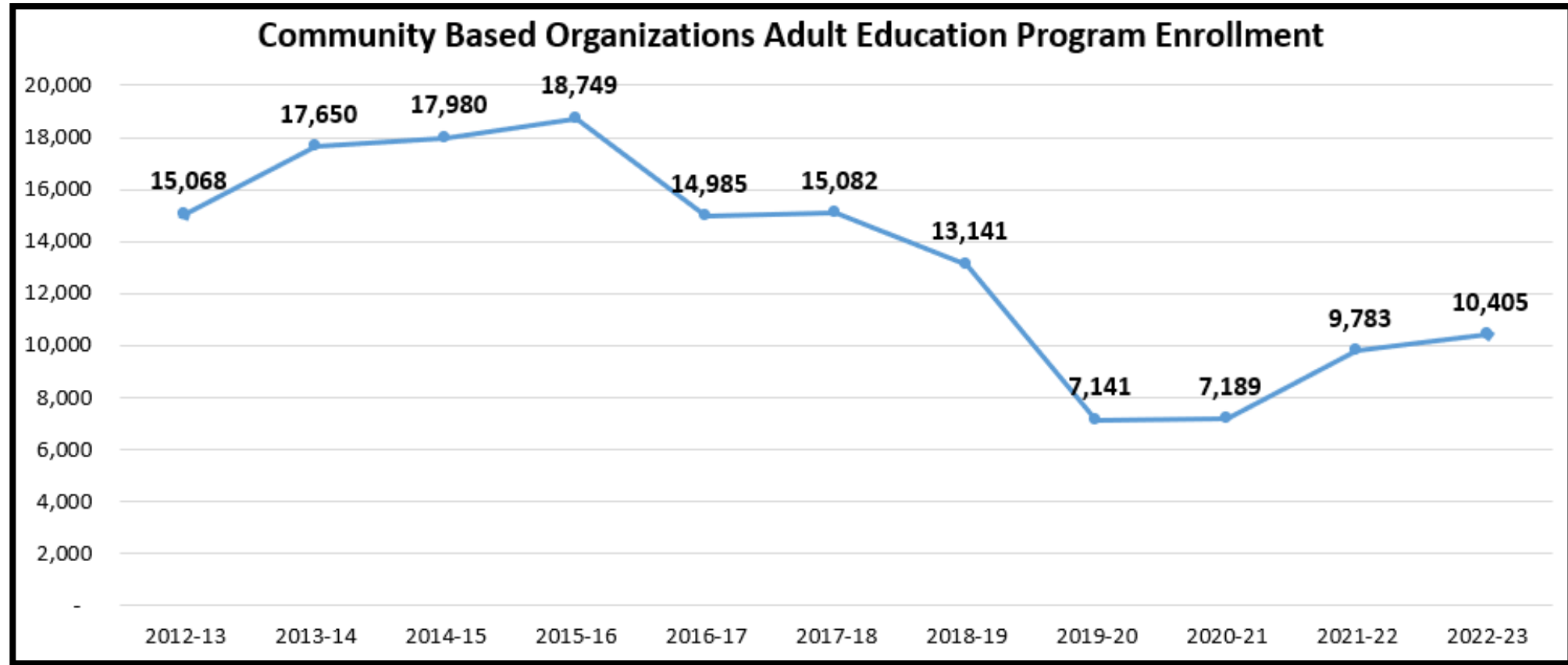
District Adult Education Program Enrollment 2012-13 to 2022-23



FCS Adult Education Program Enrollment 2012-13 to 2022-23



CBO Adult Education Program Enrollment 2012-13 to 2022-23



Approved PY 2022 & 2023 NRS Statewide Negotiated Levels

Performance Indicators Targets		
Performance Indicators	PY 2022 Negotiated Level(2022-23)	PY 2023 Negotiated Level (2023-24)
Employment (Second Quarter After Exit)	31%	31%
Employment (Fourth Quarter After Exit)	27.0%	28%
Median Earnings (Second Quarter After Exit)	\$4,867	\$4,867
Credential Attainment Rate	24%	24%
Measurable Skill Gains (MSG)	27.6%	28.7%
• ABE	28.7%	29.3%
• ESL	26.7%	28.2%
Effectiveness in Serving Employers	Not Applicable ¹	Not Applicable ¹

PY 2022 Performance Compared to NRS Statewide Negotiated Levels

Performance Indicators Targets		
Performance Indicators	PY 2022 Negotiated Level(2022-23)	PY 2022 Actual Performance (2022-23)
Employment (Second Quarter After Exit)	31%	22.29%
Employment (Fourth Quarter After Exit)	27.0%	27.52%
Median Earnings (Second Quarter After Exit)	\$4,867	\$5,838
Credential Attainment Rate	24%	19.80%
Measurable Skill Gains (MSG)	27.6%	35.52%
• ABE	28.7%	31.23%
• ESL	26.7%	37.21%
Effectiveness in Serving Employers	Not Applicable ¹	Not Applicable ¹

Workforce Innovation and Opportunity Act (WIOA)

If your agency receives WIOA Title II AGE, IELCE or Corrections grant funds, adult education data is required for inclusion in NRS submission and related accountability for NRS eligible programs.

WDIS Program Number	2020 CIP Number	Program Name	2023-24 NRS Eligible
9900000	1532010100	Adult Basic Education (ABE)	Yes
9900500	1532010101	Academic Skills Building (ASB)	Yes
9900010	1532010500	Adult High School (AHS)	Yes
9900040	1532010900	Adult English for Speakers of Other Languages (ESOL)	Yes
9900050	1532010901	*English Literacy for Career and Technical Education (ELCATE)	Yes
9900051	1532010902	*Adult ESOL College and Career Readiness (CCR)	No
9900099	1532019900	Adult High School Co-Enrolled	No
9900130	1532010207	General Education Development® (GED®) Preparation (GED2014)	Yes
9900300	1532010903	*Adult ESOL Literacy Skills	No
S990001	1532010503	*Applied Academics for Adult Education (AAAE)	No

Workforce Innovation and Opportunity Act (WIOA)

If your agency receives WIOA Title II AGE, IELCE or Corrections grant funds, adult education data is required for inclusion in NRS submission and related accountability for NRS eligible programs.

WDIS Program Number	2020 CIP Number	Program Name	2024-25 NRS Eligible
9900000	1532010100	Adult Basic Education (ABE)	Yes
9900500	1532010101	Academic Skills Building (ASB)	Yes
9900010	1532010500	Adult High School (AHS)	Yes
9900040	1532010900	Adult English for Speakers of Other Languages (ESOL)	Yes
9900099	1532019900	Adult High School Co-Enrolled	No
9900130	1532010207	General Education Development® (GED®) Preparation (GED2014)	Yes

Data Reporting

2023-24 Data Reporting Schedule

Districts, Workforce Development Information System (WDIS)

Survey	Submission Period OPENS	Required Load Date	Submission Period CLOSES
Survey F/G	August 21, 2023	August 31, 2023	September 14, 2023
Survey W/X	January 8, 2024	February 8, 2024	February 29, 2024
Survey S	June 3, 2024	June 27, 2024	July 11, 2024
End of Year Update Window	July 15, 2024	N/A	August 1, 2024

Data Certifications DUE August 9, 2024

2023-24 Data Reporting Schedule

Florida College System, Community College & Technical Center Management Information Systems (CCTCMIS)

Reporting Window	Submission Period Start Date	Required Load Date	End of Submission Period
1E/2B (Summer)	August 11, 2023	September 8, 2023	September 29, 2023
2E/3B (Fall)	January 5, 2024	February 2, 2024	March 8, 2024
3E (Winter/Spring)	April 5, 2024	May 10, 2024	June 14, 2024

Data Certifications DUE the next business day after the submission window closes.

2023-24 Data Reporting Schedule Community-Based Organizations (CBO)

Survey	Reporting Period	Submission Period OPENS	Required Load Date	Submission Period CLOSES
Survey 11*	Students Enrolled July 1, 2023	July 1, 2023	July 14, 2023	July 28, 2023
Survey 1	July 1 – September 30, 2023	October 9, 2023	October 12, 2023	October 26, 2023
Survey 2	October 1 – February 28, 2024	March 11, 2024	March 14, 2024	March 21, 2024
Survey 3	March 1 – June 30, 2024	July 8, 2024	July 11, 2024	July 25, 2024

*Survey 11 is a preliminary survey indicating only students enrolled as of July 1, 2023

2024-25 Data Reporting Schedule

Districts, Workforce Development Information System (WDIS)

Survey	Submission Period OPENS	Required Load Date	Submission Period CLOSES
Survey F/G	August 26, 2024	September 5, 2024	September 19, 2024
Survey W/X	January 6, 2025	February 6, 2025	February 27, 2025
Survey S	June 2, 2025	June 26, 2025	July 10, 2025
End of Year Update Window	July 14, 2025	n/a	July 31, 2025

Data Certifications DUE on August 8, 2025

2024-25 Data Reporting Schedule

Florida College System, Community College & Technical Center Management Information Systems (CCTCMIS)

Reporting Window	Submission Period Start Date	Required Load Date	End of Submission Period
1E/2B (Summer)	August 9, 2024	September 6, 2024	September 27, 2024
2E/3B (Fall)	January 3, 2025	February 7, 2025	March 7, 2025
3E (Winter/Spring)	April 4, 2025	May 9, 2025	June 13, 2025

Data Certifications DUE the next business day after the submission window closes.

2024-25 Data Reporting Schedule Community-Based Organizations (CBO)

Survey	Reporting Period	Submission Period OPENS	Required Load Date	Submission Period CLOSES
Survey 11*	Students Enrolled July 1, 2024	July 8, 2024	July 12, 2024	July 26, 2024
Survey 1	July 1 – September 30, 2024	October 7, 2024	October 10, 2024	October 24, 2024
Survey 2	October 1 – February 28, 2025	March 10, 2025	March 13, 2025	March 20, 2025
Survey 3	March 1 – June 30, 2025	July 7, 2025	July 10, 2025	July 24, 2025

*Survey 11 is a preliminary survey indicating only students enrolled as of July 1, 2024

2024-25 Assessment Updates & Accountability

Adult Test Reporting Timelines

Expiring Assessment	Sunset Date	New Assessment	Reportable Starting
CASAS Math GOALS	6/30/2024	CASAS Math GOALS 2	Summer Term 2024-25
CASAS Life and Works Reading	6/30/2025	CASAS STEPS Reading	Summer Term 2024-25
CASAS Life and Works Listening	6/30/2025	CASAS STEPS Listening	Summer Term 2024-25
BEST Literacy	6/30/2025	BEST Literacy 2.0	Summer Term 2024-25
BEST Plus 2.0	6/30/2025	BEST Plus 3.0	Summer Term 2024-25
TABE CLAS-E	6/30/2025	No TABE replacement test is currently approved.	
TABE 11/12	6/20/2025	TABE 13/14 pending NRS approval.	

All new assessments are currently available for use for 2024-25 summer placement. Agencies may, but are not required, to use full transition period.

New CASAS Math GOALS 2 Assessment

- By June 30, 2024, all students must be post tested out of CASAS Math GOALS. This date is firm because by July 1, 2024, sunseting assessments will be deleted for use from the Federal Register. Students not post tested will remain as such and may work against state and local post-test rates.
- An edit will be put in place that will not allow CASAS Math GOALS assessments with test dates after June 30, 2024, to be reported during 2024-25 Summer, Survey F/Term 1E reporting.
- Beginning 2025-26, only CASAS Math GOALS 2 will be listed on all test related data reporting data elements, appendices and technical assistance.
- Agencies may use CASAS Math GOALS 2 for Summer 2024-25 placement.

Adult Test Appendices

- 2024-25 draft versions of Adult Test-related appendices were emailed out on February 20, 2024, to assist with agency MIS integration of new assessment information.
 - Adult Test Reporting
 - WDIS Appendix Q
 - FCS Appendix C
 - CBO Appendix I
 - Adult General Education Programs & Associated Gains
 - WDIS Appendix R
 - FCS Appendix A
 - CBO Appendix B

Intersection of Data Reporting and AGE Policies

Data Reporting & Assessment Policy

- All state data reporting should reflect assessment, placement and instruction policies and procedures as provided by the Adult Education Bureau.
- Edits are helpful tools that the Department provides to assist with decreasing the likelihood of agency reported data that is misaligned programmatically.
- Adhere to the Assessment TA Paper for guidance on policies that guide data reporting.

2023-2024

Florida Adult Education Assessment Technical Assistance Paper

Dr. Kevin O'Farrell

Chancellor of Career and Adult Education



Division of Career and Adult Education
Bureau of Adult Education
325 West Gaines Street
Tallahassee, Florida 32399-0400

GED Program Placement Data Reporting

- Analysis of reported data has shown GED program placement of students not using required subject area tests.
- Starting Survey S/Term 3E/Survey 3, the Adult Educational Functioning Level Subject Area must match with the GED program/course subject area required for placement.
- Reference the 2023-24 Assessment TA Paper.

Table 3: 2023-2024 GED® Placement Policy for NRS Reporting Purposes

GED® Course	2023-2024 Placement Policy for NRS Reporting Purposes
Math	Student pre-tests at NRS Level 5 or higher on an eligible math subtest
Reasoning Through Language Arts	Student pre-tests at NRS Level 5 or higher on an eligible reading subtest
Science	Student pre-tests at NRS Level 5 or higher on an eligible reading subtest
Social Studies	Student pre-tests at NRS Level 5 or higher on an eligible reading subtest
GED® Comprehensive	Student pre-tests at NRS Level 5 or higher on an eligible reading or math subtest <i>If a student is testing at two different levels (i.e., GED® level in one content area and ABE level in another content area), the student should be enrolled in both GED and ABE programs for instruction.</i>
GED® -I	Student pre-tests at NRS Level 5 or higher on an eligible reading or math subtest

WIOA Primary Indicators of Performance Data Reporting Guide

- A new accountability technical assistance data reporting guide has been published on the [Research & Evaluation website](#).
- Provides a high-level explanation of all NRS related accountability measures.

WIOA Primary Indicators of Performance Data Reporting Guide for Adult Education:

Measurable Skill Gains, Employment Rates, Median Earnings, Credential Attainment & Effectiveness in Serving Employers



Integrated Education & Training (IET) Data Reporting



Florida Adult Education

AdultEducationFL.com



FLORIDA DEPARTMENT OF
EDUCATION
fldoe.org

Florida's Integrated Education & Training Data Reporting Guide

[IET Data Reporting Guide](#) - **Updated**

FLORIDA'S INTEGRATED EDUCATION AND TRAINING DATA REPORTING GUIDE



IET Data Quality Reports

- IET Data Quality Reports
 - Districts
 - 400_IETEnrollmentByDistrictSchool
 - 401_IETEnrollmentByDistrictSchoolProg
 - Colleges
 - DQ13_IETCOMP
 - CBO
 - 400_IETEnrollmentByDistrictSchool
 - 401_IETEnrollmentByDistrictSchoolProg
- Sent via TIBCO following the close of each load and close survey/term.

IET Data Quality Report - Districts

Workforce Education Data Systems (WEDS)

Integrated Education and Training (IET) Program Report

Completers by District and Program 2022-23

Survey F

Data as of September 15, 2022

District #	District Name	IET Program #	IET Program Name	IET Enrolled	*Postsecondary Course Enrollments	*Postsecondary Course Completions	Industry Certifications Attempts	*Industry Certifications Earned
11	COLLIER	2111022	Collier County School District HVAC Pre-Apprenticeship AGE	16	0	0	0	0
11	COLLIER	2111054	Collier County School District ParaPro AGE	15	0	0	0	0
42	MARION	2421101	Marion County School District Health Care AGE	1	1	0	0	0
50	PALM BEACH	2502101	Palm Beach County School District Home Health Aide IELCE	14	23	21	0	0
52	PINELLAS	2521012	Pinellas County School District HVAC AGE	4	8	8	0	0
52	PINELLAS	2522012	Pinellas County School District HVAC IELCE	8	16	16	0	0
State Total				58	48	45	0	0

Page

Source: 2022-23 Workforce Development Information System Student Database

*Unduplicated to the District, Program, Course, Industry Certification, FLEID

400_IETEnrollmentByDistrict2223.SAS:400_IETEnrollmentByDistrict2223_SVYF.XLSX:09/22/2022

- Enrollment counts are only associated with the IET program number and unduplicated; meaning students are counted only once.
- Postsecondary course enrollment and completion counts are duplicated; meaning each unique instance of enrollment in or completion of an approved IET program postsecondary course is counted.
- Industry certification attempted and earned counts are duplicated; meaning each unique instance of an attempt or earning of an approved IET program industry certification is counted.

IET Data Quality Report - Colleges

FLORIDA COLLEGE SYSTEM
REPORT 13 - COMPLETERS BY COLLEGE AND IET PROGRAM
REPORTING 2022-23 TERM 1E DATA

COLLEGE NUMBER	YEAR	IET Program Number	IET Program Name	Enrolled	Postsecondary Course Enrollments	Postsecondary Course Completions	Industry Certifications Attempts	Industry Certifications Earned
15	2023	1151171	Miami Dade College Global Logistics/Transportation AGE	7	13	12	0	0
22	2023	1221131	St. Johns River State College Adult Education for Technology Foundations AGE	17	0	0	0	0
24	2023	1241021	Santa Fe College Architecture and Construction AGE	14	0	0	0	0
24	2023	1241101	Santa Fe College Nursing Assistant AGE	7	0	0	0	0
24	2023	1242041	Santa Fe College Office Specialist IELCE	3	0	0	0	0
24	2023	1242101	Santa Fe College Nursing Assistant IELCE	5	0	0	0	0
25	2023	1251132	Seminole State College Microsoft Office Specialist AGE	6	0	0	0	0
25	2023	1252131	Seminole State College Microsoft Office Specialist IELCE	21	0	0	0	0

NOTES:

1. ALL DATA IS AS REPORTED BY THE COLLEGE
2. ENROLLMENT COUNTS ARE UNDUPLICATED TO THE COLLEGE, PROGRAM, AND STUDENT ID

CCTCMIS: SDBIETCOMP DQ13_ABECOMP 09/15/22 16:08:40
SOURCE: SDB2023

- Enrollment counts are only associated with the IET program number and unduplicated; meaning students are counted only once.
- Postsecondary course enrollment and completion counts are duplicated; meaning each unique instance of enrollment in or completion of an approved IET program postsecondary course is counted.
- Industry certification attempted and earned counts are duplicated; meaning each unique instance of an attempt or earning of an approved IET program industry certification is counted.

Adult Education Performance-Based Funding Updates



Florida Adult Education

AdultEducationFL.com



FLORIDA DEPARTMENT OF
EDUCATION
fldoe.org

Adult Education Performance-Based Funding

- Specific Appropriation 118
- New Funding Category in 2023-24
- These funds shall be spent on supporting or expanding integrated adult education and training programs; industry credential attainment for students; and instructional and student supports.
- The Florida Department of Education (FDOE) shall establish program metrics and award amounts, administer the program and allocate funds.
- Program funds are to be awarded to school districts and Florida College System (FCS) institutions based upon the most recently available performance data.



2023-24 Appropriation

\$5,000,000

Adult Education Performance-Based Funding Payments

- Payment 1: December 22, 2023
- Payment 2: April 10, 2024

State Board of Education

Ben Gibson, *Chair*
Ryan Petty, *Vice Chair*
Members
Monesia Brown
Esther Byrd
Grazie Pozo Christie
Kelly Garcia
MaryLynn Magar

Manny Diaz, Jr.
Commissioner of Education

MEMORANDUM

TO: District Career and Technical Education Directors
District Technical Center Directors

FROM: Kevin O'Farrell, Ph.D.

DATE: May 1, 2024

SUBJECT: Allocation of Performance-Based Incentive Funds for Industry Certification Attainment from Specific Appropriation 111 from the 2023 General Appropriations Act (GAA)

The Florida Department of Education has released the second allocation of the postsecondary performance-based incentive funds for industry certification attainment that are provided in Specific Appropriation 111 from the 2023 General Appropriations Act ([Chapter 2023-239, Laws of Florida](#)). The following payments have been disbursed to your district:

- Payment 1 – December 22, 2023
- Payment 2 – April 10, 2024

Due to reporting anomalies, data was revised resulting in an adjusted pro-rated award of approximately \$928 per certification. Therefore, the total allocation for each agency was amended.

The attached document provides an updated summary of the industry certification performance-based incentive funds that were disbursed to districts during the 2023-24 fiscal year. The report summarizes the updated total funded industry certifications and the allocation provided for each school district. Note the payment amounts for December and April in columns 3 and 4 of the table.

If you have questions about the disbursement of these funds to your district workforce education program, please contact your district finance office. The documentation in the electronic funds transfer will have a revenue account number of 3317. You may reference this account number when consulting with their staff.

For questions about the calculated allocation, please contact Dr. Claudia Campagnola at Claudia.Campagnola@fldoe.org.

KO/cc

Attachment

cc: Suzanne Pridgeon, Deputy Commissioner, Finance and Operations

Kevin O'Farrell, Ph. D.
Chancellor of Career and Adult Education

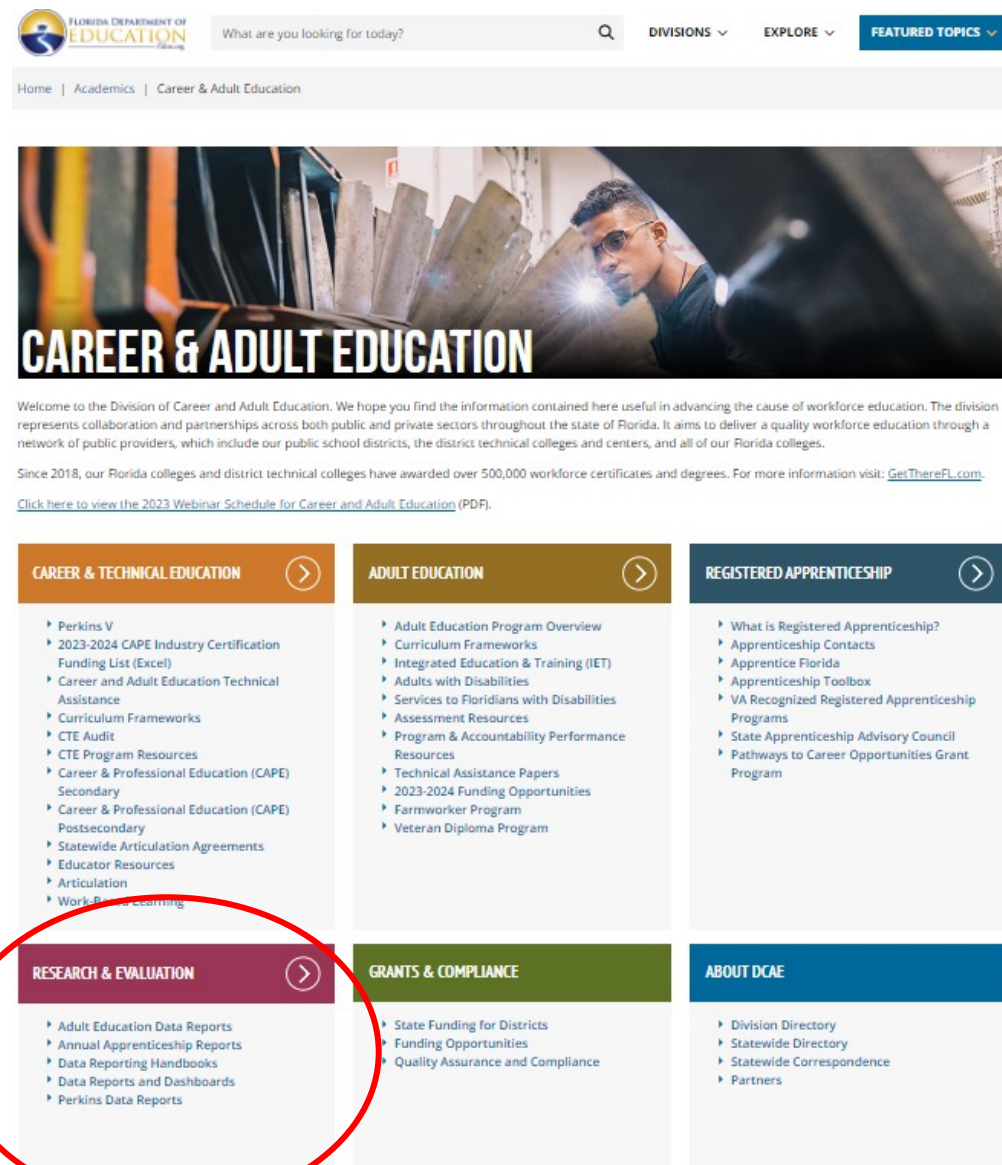
Reporting Resources

Office of Research & Evaluation

- The Research and Evaluation Unit plays a distinctive role within the Division of Career Technical and Adult Education. Central functions of the unit include the management of data reporting policies and procedures, state and federal accountability reporting, responding to data requests, and sharing public-facing data for research and evaluation projects related to career technical education and adult education programs, students, and outcomes.
- Contact us for questions about:
 - Data reporting
 - Data elements & appendices
 - Data quality reports
 - Adult education outcomes
 - Adult education accountability
 - NRS
 - State performance-based funding

Adult Education Program & Accountability Performance Resources

- [Research & Evaluation](#)
- WIOA Resources
- NRS information
 - State Performance Targets
 - Business Rules
 - NRS Performance Tables
- IET Data Reporting Guide



Division of Career & Adult Education, Research & Evaluation Contacts

Reporting Requirements and Data Elements

- Dr. Brittany C. Ross, Director, Research & Evaluation, Brittany.Ross@fldoe.org, 850-245-9005
- Dr. Merve Pamuk-Quick, Educational Policy Analyst (CTE Specialist), Merve.Pamuk@fldoe.org, 850-245-0720
- Ashley Cooper, Educational Policy Analyst (Adult Education Specialist), Ashley.Cooper@fldoe.org, 850-245-9463
- Gizem Solmaz-Ratzlaff, Program Specialist IV, Gizem.Ratzlaff@fldoe.org, 850-245-9540

Data Reporting and Submissions Issues

- Kimberly Pippin, Bureau Chief, Kimberly.Pippin@fldoe.org, 850-245-9594
- Katherine Mueller, Data Processing Manager, Katherine.Mueller@fldoe.org, 850-245-9515

Grants & Compliance

Charles Feehrer

Bureau Chief, Grants Management & Compliance

Charles.Feehrer@fldoe.org



Florida Adult Education

AdultEducationFL.com



FLORIDA DEPARTMENT OF
EDUCATION
fldoe.org

Grants Administration and Compliance

ShareFile

- 2024-25 DOE 200 Grant Award Notifications will be made available in ShareFile folder #7 upon final approval of the applications.
- Should any additional requests for information (i.e., budget edits, updated DOE 610/620 information, etc.) be made from FDOE, your timely response will increase the likelihood of speedy approval.
- Any ShareFile issues/questions should be made to OGM@fldoe.org.

DOE 200 Grant Award Notifications

- Timelines for amendments, obligating/liquidating funds and final reports (Box #9).
- Please be aware, April 30, 2025, is the last day to upload amendments.

Grants Administration and Compliance

DON'T:

- **Use funds until the amendment has been approved.**
 - This may result in a monitoring finding and/or repayment of grant funds.
- **Submit multiple amendments back-to-back.**
 - Not only does this create a backlog of grants in the approval pipeline, but it is also a risk factor used for determining which programs are monitored in the coming year.
- **Overload line-items with funds.**
 - Using one line-item as "catch-alls" and amending the budget later is bad grant management. It creates the need for unnecessary amendments.
- **Wait until the last minute.**
 - Amendment approval is a multi-layered process that involves several Divisions within FDOE.
 - Amendment approval is a time-consuming process.
 - Amendments are not valid until they are fully approved, and they are not retroactive.

Grants Administration and Compliance

DO:

- **Analyze previous grant budgets. Determine what changes should be made early.**
 - This is good grant management. Avoids unnecessary amendments.
- **Work closely with your Grant Managers.**
 - DCAE has some new Grant Managers on staff. Introduce yourselves. We're here to help you be as successful as you can be.
- **Complete a Projected Equipment Purchases Form (if necessary).**
 - If you are purchasing new (previously unapproved equipment), in addition to the DOE 150 and DOE 151 you must complete the PEP.
- **Check the DCAE landing page on the FDOE website.**
 - Important communications are posted to the website and the DCAE landing page.
 - Division directory is on the website.
 - Important grant materials can be downloaded directly from the website (i.e., DOE 100A, DOE 399, DOE 150/151, Green Book, etc.).

Grants Administration and Compliance

Spring Compliance Monitoring

- Spring monitoring is underway.
- All programs monitored in the Spring with a PCOG grant (2019-2023) will also have a monitoring visit.

Fall 2024 Monitoring

- Director Kearce and her team will begin drafting the Fall 2024 monitoring schedule this Summer.
- Be expecting notification by the end of Summer 2024.

Visit <https://www.fldoe.org/academics/career-adult-edu/compliance/> to review the monitoring reports from agencies in 2022-23.

Review the [Core Monitoring Guide](#) in anticipation of your monitoring visit.

Review the [Green Book](#) processes and procedures.

Any monitoring questions, please contact Director Kara.Kearce@fldoe.org.

GED® Testing Updates

Ashley Olevitch

High School Equivalency Diploma Program

Manager & GED® Administrator

Ashley.Olevitch1@fldoe.org



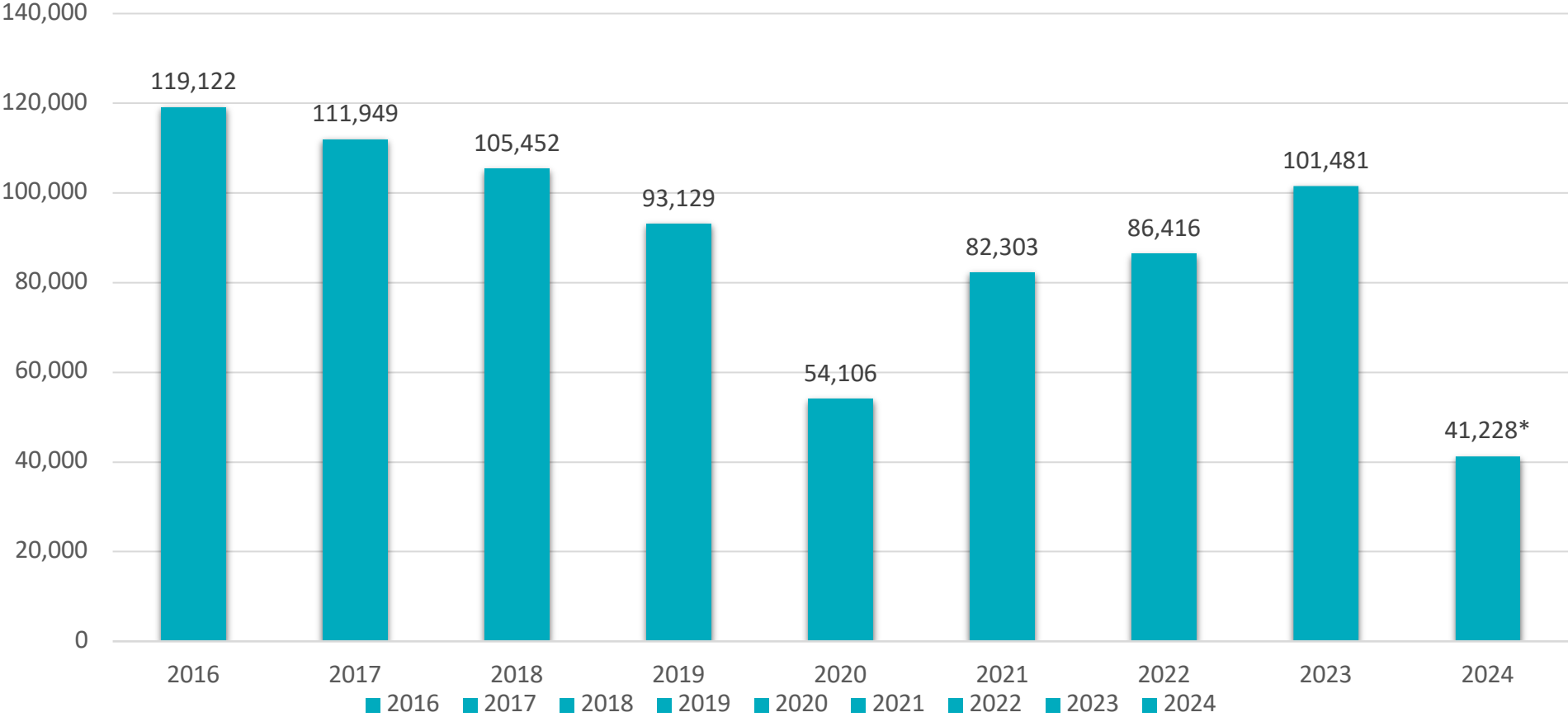
Florida Adult Education

AdultEducationFL.com



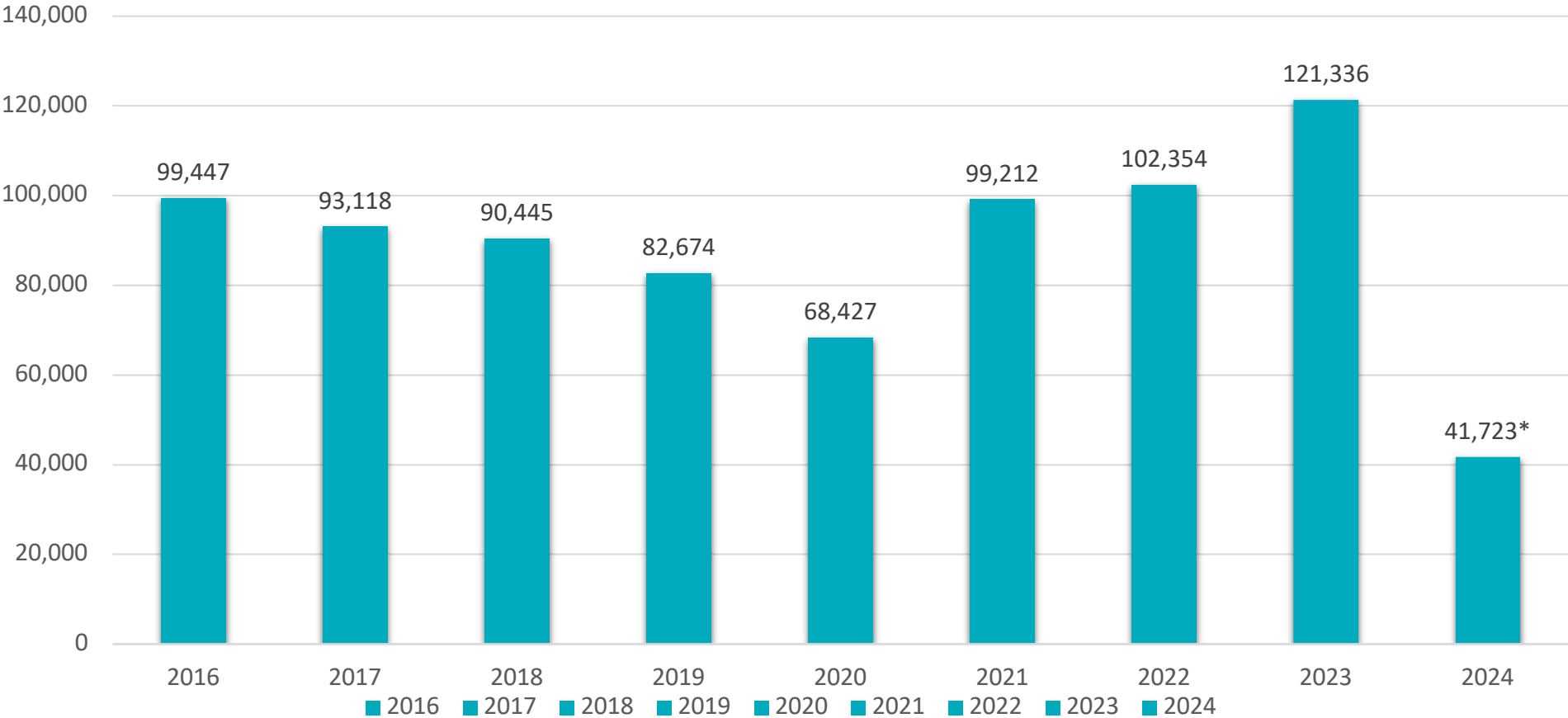
FLORIDA DEPARTMENT OF
EDUCATION
fldoe.org

GED® Tests Taken



*As of May 20, 2024

GED® Ready Tests Taken



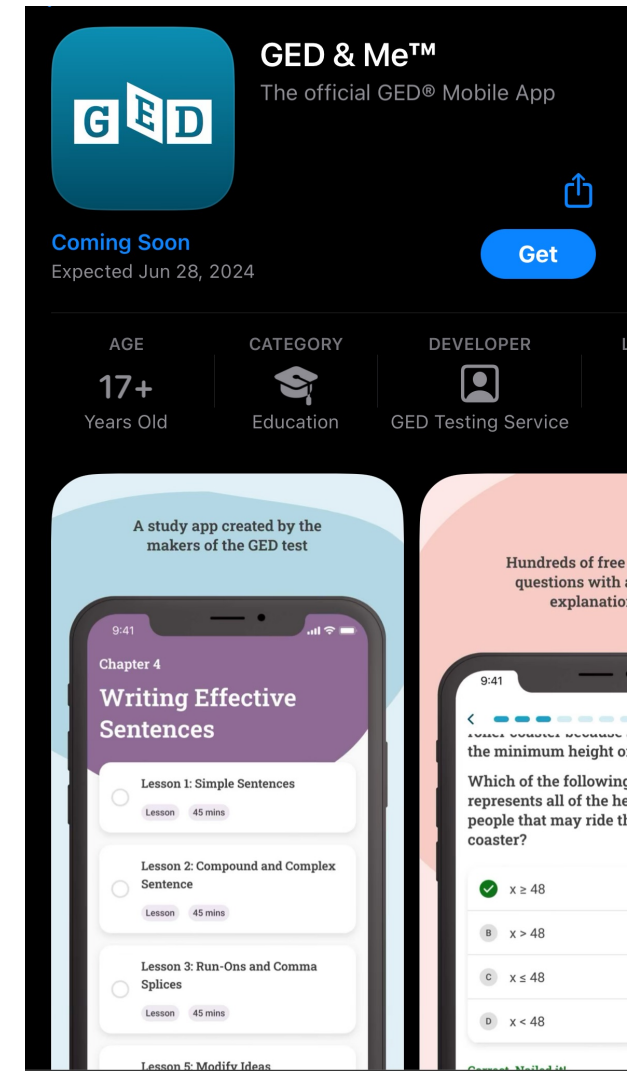
*As of May 20, 2024

Rule 6A-6.0201 Updates

- Fee increases will begin on July 1, 2024, as a result of a state contract:
 - Each subject area test increased by \$6 from \$32 to \$38.
 - Each duplicate credential increased by \$5 from \$15 to \$20.
 - The initial printed diploma is now \$10.
 - Initial electronic diplomas and transcripts are still free.
 - Third-party Verifications increased by \$7 from \$15 to \$22.
- Underage Testing Update:
 - SB 7004, signed on May 13, 2024, amends s.1003.435(4)(a), Florida Statutes (F.S.), beginning July 1, 2024.
 - New statute language
 - A candidate who has filed a formal declaration of intent to terminate school enrollment pursuant to s. 1003.21(1)(c), F.S., may take the examination after reaching the age of 16.
 - What does this mean?

New from GED®

- GED® Mobile App
 - Created for independent learners but can be used in adult ed programs too.
 - Takes learners on a guided path to achieve their goals.
 - Same username and password as the student's GED.com account for seamless use of the practice questions, GED® flash and the opportunity to link a Kaplan prep book to study alongside the Kaplan chapters.
 - More publisher references are likely to be included in the future.
 - Expected to launch June 28, 2024.



GED® Direct vs GED® Marketplace – Purchasing GED® Tests

GED® Direct™

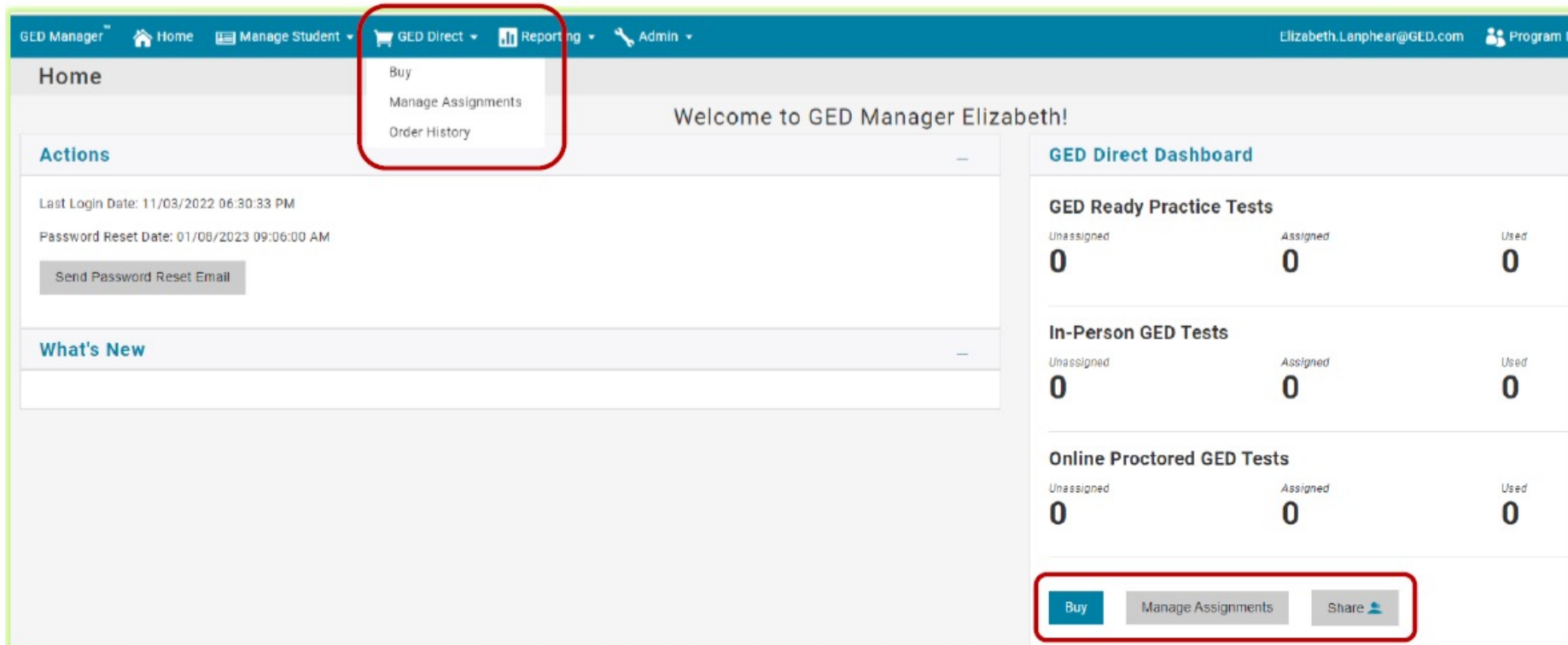
- You should use GED® Direct to purchase GED® tests and GED® Ready tests if ...
 - ✓ You have GED® Manager access
 - ✓ You want to manage and track usage of learner tests
 - ✓ You want to take advantage of bulk pricing
 - ✓ You have a credit card or credit terms with Pearson
 - ✓ You may also use a PO and a check
- Benefits: Tests don't expire; You can monitor usage; No voucher codes to manage.

GED® Marketplace™

- You should use GED® Marketplace to purchase GED® tests and GED® Ready tests if ...
 - ✓ You are buying one test or small volume
 - ✓ You don't have GED® Manager access
 - ✓ You don't need to manage and track usage of learner tests
 - ✓ You have a credit card or credit terms with Pearson
 - ✓ You may also use a purchase order or a check
- Benefits: Anyone can place an order on GED® Marketplace; You have 18 months to use vouchers before expiration.

GED® Direct

- GED® Direct menu on the navigation bar in GED® Manager allows you to buy or manage your GED® Readys and official GED® Tests as well as access your order history.
- To find out more: <https://ged.com/wp-content/uploads/GED-Direct-FAQs.pdf>



GED® Direct Features

- Ability to Share Tests
 - Using the GED® Direct Dashboard, you can share tests to other staff members with GED® Manager access.
 - GED® is currently working on the ability to create groups so that you can share a set number of tests with individual staff members and not all of your available tests.
- Ability to Unassign Tests
 - As long as a student has not launched/taken a test, it can be unassigned and will go back into your pool of available tests.
- No Expiration
 - Tests purchased through GED® Direct do not expire.
 - However, if you purchase vouchers through GED® Marketplace they have an expiration date and if unused when they expire, it could take several weeks to be issued new vouchers.

GED® Testing Questions?

- Email flgedhelp@fldoe.org
- Phone (850) 245-0449
- Phone toll free in Florida (877) 352-4331
- When calling, press “0” to reach a customer service representative and bypass the recording.

Legislative Updates

Evan Steinberg

Legislative Liaison and Policy Analyst

Evan.Steinberg@fldoe.org



Florida Adult Education

AdultEducationFL.com



FLORIDA DEPARTMENT OF
EDUCATION
fldoe.org

SB 7032 – GATE Program

This bill establishes the Graduation Alternative to Traditional Education (GATE) Program. GATE specifically targets students aged 16 to 21 who have dropped out of the traditional K-12 system. The overall goal of the program is to provide an alternative pathway through school district's and Florida College System's adult education programs that results in the attainment of a high school diploma and enrollment in a career education program simultaneously.

The bill also amended Adult High School Co-enrollment: No longer limited to core curricula courses and can report funding for up to four courses instead of two. Section 3 amended the High School Equivalency Diploma Program to require district school boards to notify candidates of adult secondary and postsecondary education options including the GATE program. It also states that candidates must be informed of eligibility and academic requirements of each option.

SB 7032 – GATE Program

GATE Scholarship Program

The GATE Scholarship program is created to financially support institutions participating in the program. The scholarship reimburses institutions for registration, tuition, laboratory and examination fees and related instructional material costs, contingent upon annual appropriations in the General Appropriations Act.

- The Department will develop and adopt rules for implementing this scholarship.
- Reimbursements are contingent upon the annual appropriation in the General Appropriations Act.

GATE Startup Grant Program

Purpose: funding to support the startup and implementation of the GATE program, subject to legislative appropriation. GATE Startup Grant Program: Grant application must be available to the public no later than August 15, 2024. *Statute 1011.804 outlines proposal requirements.* School districts and Florida College System institutions must be located in or serve a rural area of opportunity as designated by the Governor. Applicants may not receive more than 10% of the total amount appropriated for the program.

GATE Program Student Success Incentive Fund

Unless otherwise specified in the state budget, each institution must be provided \$1,000 per student who completes the GATE program by earning a standard high school diploma or high school equivalency diploma and a credential on the Master Credentials List under s. 445.004(4), F.S., within 3 years. If a student earns his or her diploma and credential at different institutions, then each institution must receive \$500. All funding for the GATE Program is subject to legislative appropriation.

THANK YOU!



Florida Adult Education

AdultEducationFL.com



FLORIDA DEPARTMENT OF
EDUCATION
fldoe.org