



# ACEC/PA

AMERICAN COUNCIL OF ENGINEERING COMPANIES  
*of Pennsylvania*

Welcome to the Eastern Region Meeting  
November 12, 2024

Thank you to our sponsors:



# Upcoming Events

- ▶ Fall Day – November 20, Hershey Country Club
- ▶ Western Region Meeting – January 10
- ▶ Central Region Meeting – January 15, West Shore Country Club
- ▶ Government Affairs Reception – January 15, West Shore Country Club
- ▶ Diamond Awards for Engineering Excellence- January 23, Lancaster Marriott at Penn Square
- ▶ Next Eastern Region Meeting – February 18, The Desmond

Visit [www.acecpa.org/events/](http://www.acecpa.org/events/) to sign up!



# DELAWARE RIVER PORT AUTHORITY

NOVEMBER 12, 2024

*ELISABETH  
KLAWUNN, P.E.  
MANAGER CONSTRUCTION  
& MAINTENANCE | ENGINEERING*

*ACEC PA EASTERN REGION MEETING*

# About the Authority

## Stewardship. Service. Community

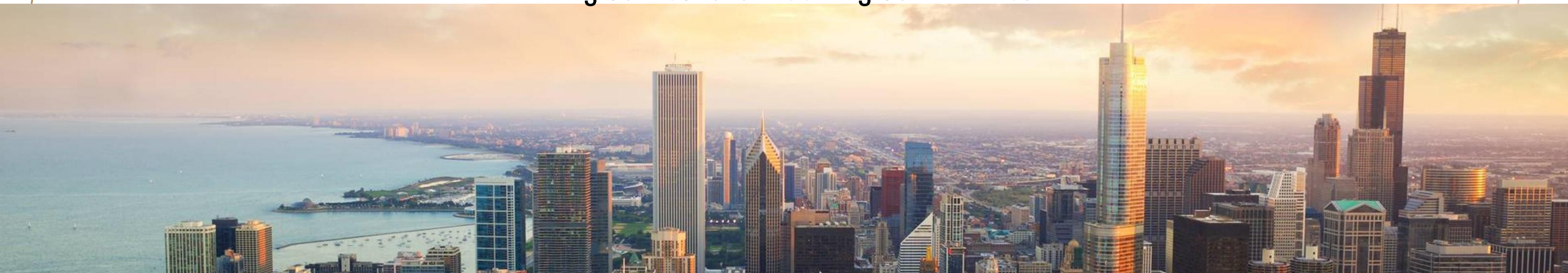
### Our Mission

As stewards of public assets, we provide for the safe and efficient operation of transportation services and facilities in a manner that creates value for the public we serve.

### Our Vision

Together we are world-class stewards of public transportation assets. Working collaboratively across all business units, we operate, maintain, improve, and protect transportation infrastructure for the benefit of the citizens we serve throughout the Greater Philadelphia Region. We are committed to building credibility, earning public trust and creating public value.

**Building Connections...Serving Communities**





# Ben Franklin Bridge



- July 1, 1926
- Initial Investment \$45M
- Suspension Bridge
- 7,456' Long
- 128' Wide
- 7 Lanes of Traffic
- PATCO Tracks
- Pedestrian Walkway

# Walt Whitman Bridge

- May 16, 1957
- Initial Investment \$87M
- Suspension Bridge
- 11,981' Long
- 79' Wide
- 7 Lanes of Traffic



# Commodore Barry Bridge



- February 1, 1974
- Initial Investment \$127M
- Cantilever Through Truss
- 13,912' Long
- 60' Wide
- 5 Lanes of Traffic



# Betsy Ross Bridge

- April 30, 1976
- Initial Investment \$102M
- Through Truss
- 8,485' Long
- 90' Wide
- 6 Lanes of Traffic



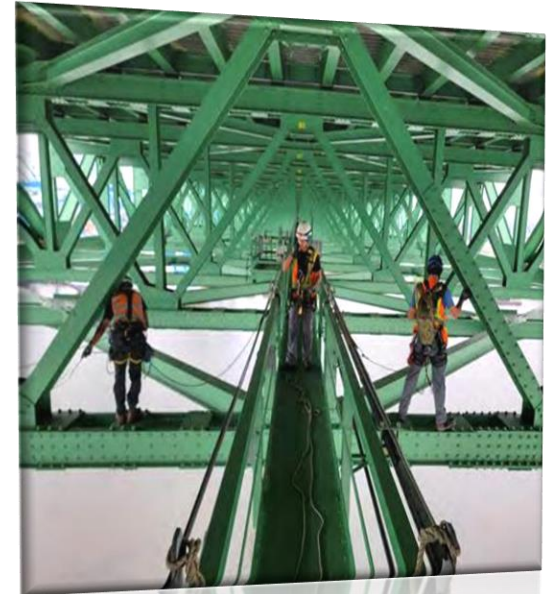


# PATCO



# Biennial Inspections

- Occurs every 2 years
- Done at all 5 facilities
- NBIS, FHWA, DOT
- Non-Redundant Steel Tension Members (NSTMs)
- Drones



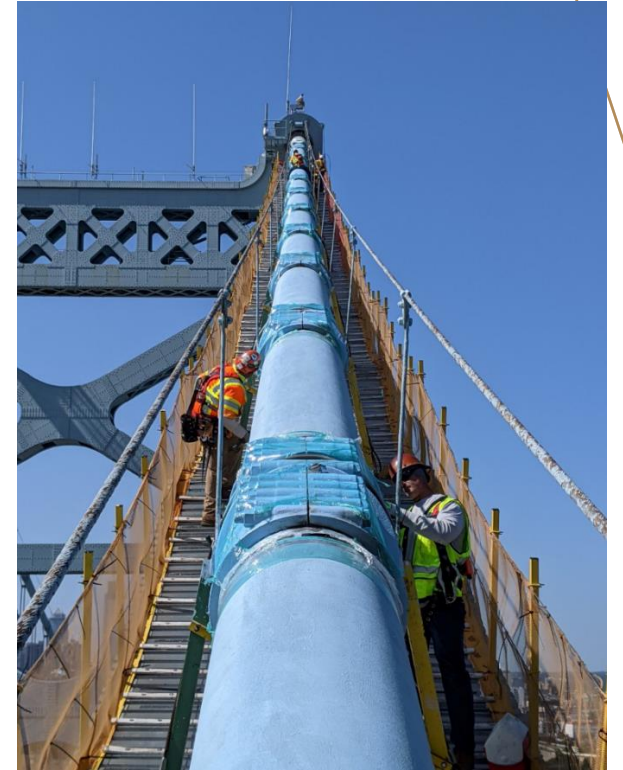
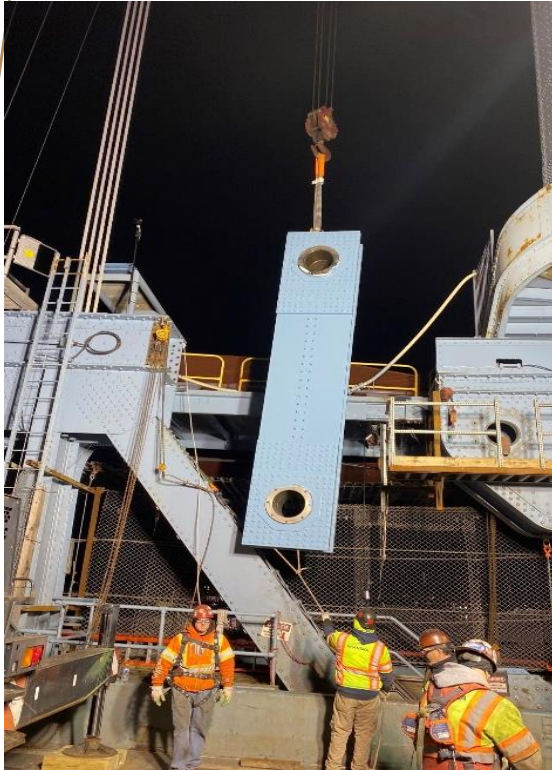


# DRPA 5 Year Capital Program

Facility	2024	2025	2026	2027	2028	Total
Ben Franklin Bridge	\$45,725	\$30,410	\$39,130	\$39,000	\$27,500	\$181,765
Walt Whitman Bridge	\$4,880	\$8,300	\$15,700	\$16,700	\$26,600	\$72,180
Commodore Barry Bridge	\$6,200	\$31,350	\$40,340	\$35,535	\$35,035	\$148,460
Betsy Ross Bridge	\$22,730	\$21,680	\$20,750	\$17,000	\$6,000	\$88,160
PATCO	\$36,308	\$40,347	\$41,161	\$40,447	\$29,175	\$187,438
Other	\$29,362	\$25,288	\$13,775	\$19,088	\$16,900	\$104,413
Total DRPA Costs	\$156,965	\$157,375	\$170,856	\$167,770	\$141,210	\$794,176



# Upcoming Projects: Ben Franklin Bridge



# Upcoming Projects: Walt Whitman Bridge





# Upcoming Projects: Commodore Barry Bridge





# Upcoming Projects: Betsy Ross Bridge



# Upcoming Projects: PATCO







*THANK  
YOU*





Delaware River  
Joint Toll Bridge  
Commission

*Preserving Our Past, Enhancing Our Future*

# Doing Business with the Delaware River Joint Toll Bridge Commission

**ACEC-PA Panel Discussions  
Malvern, PA  
November 12, 2024**

**Presented by:  
Kevin M. Skeels, PE, Chief Engineer**





# AGENDA

1. DRJTBC Overview
2. Capital Program
3. Doing Business with the DRJTBC

# DRJTBC OVERVIEW



# DRJTBC Facilities

- ▶ 20 Delaware River Crossings connecting Pennsylvania and New Jersey
  - Eight (8) Toll Bridges
    - Buildings and Facilities at each Toll Bridge
  - Twelve (12) Toll-Supported Bridges, Including two (2) Pedestrian Bridges
    - Security Shelters at each Toll-Supported Bridge
  - 62 Total Approach Structures Combined in Pennsylvania and New Jersey

# DRJTBC Bridges – Quick Facts

Toll Bridge	Year Built	Age	Route
Trenton – Morrisville	1952	72	US 1
Scudder Falls	2022	3-5	I-295
New Hope – Lambertville	1971	53	US 202
Interstate 78	1989	35	I-78
Easton – Phillipsburg	1938	86	US 22
Portland – Columbia	1953	71	US 46, PA 611
Delaware Water Gap	1953	71	I-80
Milford – Montague	1953	71	US 206

- Average Age Toll Bridges – 66 Years \*\*
- Average Age TS Bridges – 106 Years
- Average Age all Bridges – 91 Years \*\*
- 6 Bridges are 120+ Years old!

Toll Supported Bridge	Year Built	Age	Route
Lower Trenton	1927	97	Local
Calhoun Street	1884	140	Local
Washington Crossing	1904	120	Local
New Hope – Lambertville	1904	120	Local
Centre Bridge – Stockton	1926	98	Local
Lumberville – Raven Rock	1947	77	Pedestrian
Upper Black Eddy – Milford	1931	93	Local
Uhlerstown – Frenchtown	1933	91	Local
Riegelsville	1904	120	Local
Northampton Street	1894	130	Local
Riverton – Belvidere	1904	120	Local
Portland – Columbia	1957	67	Pedestrian

- Toll Bridges ADT – 273,900\* vehicles
- TS Bridges ADT – 86,400\* vehicles
- 131.5M\* crossings per year!

\* 2023 Annual Average Daily Traffic

\*\* Excluding Scudder Falls TB



# DRJTBC Capital Program

# Capital Program

- ▶ DRJTBC Capital Program:
  - Planned 10-Year Capital Program
  - Approved 2-Year Capital Plan
- ▶ Capital Program Updated Annually
- ▶ Capital Plan Approved Annually
- ▶ 2-Yr. Annual Inspection of Bridges and Facilities
- ▶ Projects Address Annual Inspection Findings
- ▶ Program Incorporates Commission Initiatives



# All Electronic Tolling Program

- ▶ Replacement of in-person cash toll collection to an all-electronic toll (AET) collection environment Commission wide in the coming years.
- ▶ Program Components:
  - Phase 1 – Soft Conversion from cash collection at toll plazas: EZPass and Pay-by-Plate only; Complete by January 2025.
  - Phase 2 – Hard Conversion of AET – Demolition of Toll plazas and replacement with overhead EZPass Gantries and Equipment.
- ▶ Completion of each phase at each facility between 2024 and 2034.

# Job Order Contract (JOC) Program

- ▶ **Four (4) JOC Services Contracts (\$3M Ceiling Each):**
  - Bridge, Highway and Civil Work (South Region)
  - Bridge, Highway and Civil Work (North Region)
  - Building and Facility Work (South Region)
  - Building and Facility Work (North Region)
- ▶ Allows the execution of smaller, but no less important, construction efforts that are too small to put out to bid
- ▶ Allows for expedient construction on exigent situations
- ▶ Goes hand-in-hand with the Professional Services Task Order Assignments



# Task Order Agreements

- ▶ **Six (6) Task Order Agreement Contracts**
  - Electronic Toll Collection/Tolling
  - Structural/Civil Design Services (2)
  - Facilities Design Services
  - Construction Management Services
  - Construction Inspection Services
- ▶ 2-year staggered terms with \$0.5 to 1M Ceiling
- ▶ Allows the execution of smaller, but no less important, design efforts that are too small to issue a Proposal request
- ▶ Allows for expedient design on exigent situations
- ▶ Goes hand-in-hand with the Job Order Contract Program

# Current and Upcoming Procurements

[www.drjtbc.org/doing-business](http://www.drjtbc.org/doing-business)

PROJECT	PLAN
Facilities Task Order Consultant \$1 MILLION (2-Year Term)	RFP 4Q 2024
Construction Inspection Task Order Consultant \$0.5 MILLION (2-Year Term)	RFP 4Q 2024
New Hope–Lambertville Toll Bridge AET Hard Conversion CM/CI Services	RFP 4Q 2024
Delaware Water Gap Toll Bridge AET Hard Conversion Design Services	RFP 1Q 2025
New Hope–Lambertville Toll Bridge AET Hard Conversion Construction	Bids Due 11/26/2024

# Other 2025–2026 Capital Plan

## Anticipated Capital Projects

### Projected Contracts – Design – Construction – CM/CI Services

- T–M TB Route 1 /Pennsylvania Avenue Interchange Improvements
- T–M TB All Electronic Tolling Facility Conversion
- SF TB Deck Sealing and PPC Overlay
- NH–L TB All Electronic Tolling Facility Conversion
- NH–L TB Backwall Rehabilitation
- E–P TB Broad Street Viaduct Sidewalk Replacement
- DWG I–80 TB Maintenance Facility Expansion
- M–M TB Structural Analysis and Steel Repairs
- LT TSB Interim Deck Repairs
- L–RR Pedestrian Bridge Architectural Lighting and ESS System Installation
- U–F TSB Rehabilitation
- UBE–M TSB Painting & Miscellaneous Repairs
- R–B TSB Painting & Miscellaneous Repairs
- Multiple Bridges – Underwater Substructure Improvements
- Enterprise Resource Planning System
- Task Order Agreement Renewals
- Job Order Contract Renewals



# Contract Compliance Program

- ▶ **Identified Business Enterprise (IBE) Classifications:**

Small Business Enterprise (SBE)    Disadvantaged Business Enterprise (DBE)  
Minority Business Enterprise (MBE)    Veteran Business Enterprise (VBE)  
Women Business Enterprise (WBE)    Disabled Business Enterprise (DsBE)

- ▶ Commission's IBE Firm Participation Target is 25% of Contract Value for any combination of classifications.
- ▶ Applicable to all Professional Services and Construction Contracts.
- ▶ Can include vendors (Direct Expenses) and materials suppliers.

- ▶ For more Information go to [www.drjtbc.org](http://www.drjtbc.org)

- DOING BUSINESS / Contract Compliance
- DOING BUSINESS / Consultant Contract Awards

# 2025–2026 2–Year Anticipated Capital Plan Expenditures

**\$257 Million**

# DOING BUSINESS WITH THE DRJTBC



# Doing Business with the DRJTBC

## Proposal Preparation Tips

- ▶ Go to [www.drjtbc.org](http://www.drjtbc.org) – Doing Business to view the RFP
- ▶ Go to [www.drjtbc.org](http://www.drjtbc.org) – Doing Business – Procurement Process Guidelines to see the Procurement Process
- ▶ Adhere to RFP SUBMISSION REQUIREMENTS
- ▶ Include all required signed Attachments
- ▶ Include Acceptance of Terms and Conditions of DRJTBC Sample Standard Commission–Consultant Agreement
- ▶ Include Sample Certificate of Insurance and Brokers Letter
- ▶ Separate Fee Proposals to Accompany the Proposal
- ▶ Electronic submissions

Omission of any required Proposal components affects the scoring!

## DRJTBC River Crossing Bridge Information

[www.drjtbc.org/BRIDGE-INFO](http://www.drjtbc.org/BRIDGE-INFO)

## Procurement Information

[www.drjtbc.org/DOING-BUSINESS](http://www.drjtbc.org/DOING-BUSINESS)

# Questions / Comments



**Thank you!**







*Question for Kevin or Lis?*  
*Text (267) 980-6323*

# Upcoming Events

- ▶ Fall Day – November 20, Hershey Country Club
- ▶ Western Region Meeting – January 10
- ▶ Central Region Meeting – January 15, West Shore Country Club
- ▶ Government Affairs Reception – January 15, West Shore Country Club
- ▶ Diamond Awards for Engineering Excellence- January 23, Lancaster Marriott at Penn Square
- ▶ Next Eastern Region Meeting – February 18, The Desmond

Visit [www.acecpa.org/events/](http://www.acecpa.org/events/) to sign up!