

ACEC CENTRAL CHAPTER PENNDOT DISTRICT 9-0

JANUARY 15, 2025

VINCE GREENLAND, P.E. – DISTRICT EXECUTIVE

FOCUS AREAS

- Our People
- Funding
- Future Opportunities



DISTRICT 9 CONTACTS



Vince Greenland, P.E.
District Executive
vgreenland@pa.gov
(814) 696-7100



Design Related Issues

James Pruss, P.E.
Assistant District Executive—Design
jpruss@pa.gov
Phone: (814) 696-7151



Maintenance Related Issues

Dave Kammerer, P.E.
Assistant District Executive - Maintenance
dkammerer@pa.gov
Phone: (814) 696-7176
Cell: (814) 207-2205



Construction Related Issues

Brad Brumbaugh, P.E.
Assistant District Executive - Construction
brbrumbaugh@pa.gov
Phone: (814) 696-7130
Cell: (814) 932-7839



Blair County Maintenance Issues

Jake Decker
County Manager
jacdecker@pa.gov
Phone: (814) 696-7271
Cell: (814) 329-7374



Bridge Related Issues

Scott Roberts, P.E.
Bridge Engineer
sroberts@pa.gov
Phone: (814) 696-7180
Cell: (814) 414-2556



Traffic Related Issues

Ernest Cascino, P.E.
Traffic Engineer
ecascino@pa.gov
Phone: (814) 696-7231
Cell: (814) 932-8018



Community Relations / Liaison to the Public

Jay Knarr
Press Officer
jaknarr@pa.gov
Phone: (814) 696-7101



Cambria County Maintenance Issues

Mike Peachey
County Manager
mpeachey@pa.gov
Phone: (814) 472-7100
Cell: (814) 505-3157



Design Related Issues (Project Specific)

Nicki Donahoe, P.E.
Portfolio Manager
ndonahoe@pa.gov
Phone: (814) 317-1650



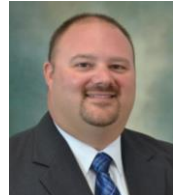
Highway Occupancy Permit Issues

Rodney Hill
Permits Manager
rodhill@pa.gov
Phone: (814) 696-7260
Cell: (814) 934-9584



Fiscal-Related Issues

Matthew Ardary
Fiscal Officer
mardary@pa.gov
Phone: (814) 696-7266



Huntingdon County Maintenance Issues

Tony Tanzi
County Manager
ttanzi@pa.gov
Phone: (814) 643-0150
Cell: (814) 599-0566



Right of Way / Utilities / Environmental Issues

John Ciprich, P.E.
Design Services Engineer
jciprich@pa.gov
Phone: (814) 696-7204



Human Resources Issues

Melissa Matchock
HR Officer
mmatchock@pa.gov
Phone: (814) 696-7240



Bedford / Fulton County Maintenance Issues

Mark Yeckley
County Manager
myeckley@pa.gov
Phone: (814) 623-6144
Cell: (814) 285-2820



Somerset County Maintenance Issues

Joe Kelemen II
County Manager
jkelemen@pa.gov
Phone: (814) 445-7905
Cell: (814) 289-3349



D9 RECRUITMENT COMMITTEE

2024 District 9 Recruitment Team Highlights

Identified Target Markets and Developed Event Protocol

- Increased focus on, contacts at colleges/universities, high schools, vo-tech centers
- Implemented Digital: 511PAAtoona X (formerly Twitter), Facebook, LinkedIn
- Created a consistent, professional look for tables, exhibits at Career/Job fairs
- Integrated new materials, including large outdoor banners and benefits, total compensation flyers

Statewide Recruitment Committee

- Developed a more coordinated effort with OA/BER – Excel Events Worksheet
- Added new marketing collateral, including total compensation and benefits flyers
- New giveaway and exhibit items (pens, magnets, screen cloths, etc.) and event kit

Attended and/or Hosted More Than 40 Hiring Events, Career/Job Fairs

- Launched On-site Hiring Events and Walk-in Hiring Events in several counties



RECRUITMENT EFFORTS - SUMMARY

- Increased Focus:
 - Established Recruiting Committee and Recruiting Coordinator
 - Ran targeted campaigns to find the right people
 - Worked with schools and industry groups to spread the word
- Results:
 - Transportation Equipment Operator
 - November 2023: 15 Vacancies
 - January 2025: 5 Vacancies
 - Civil Engineer
 - November 2023: 9 Vacancies
 - January 2025: 2 Vacancies

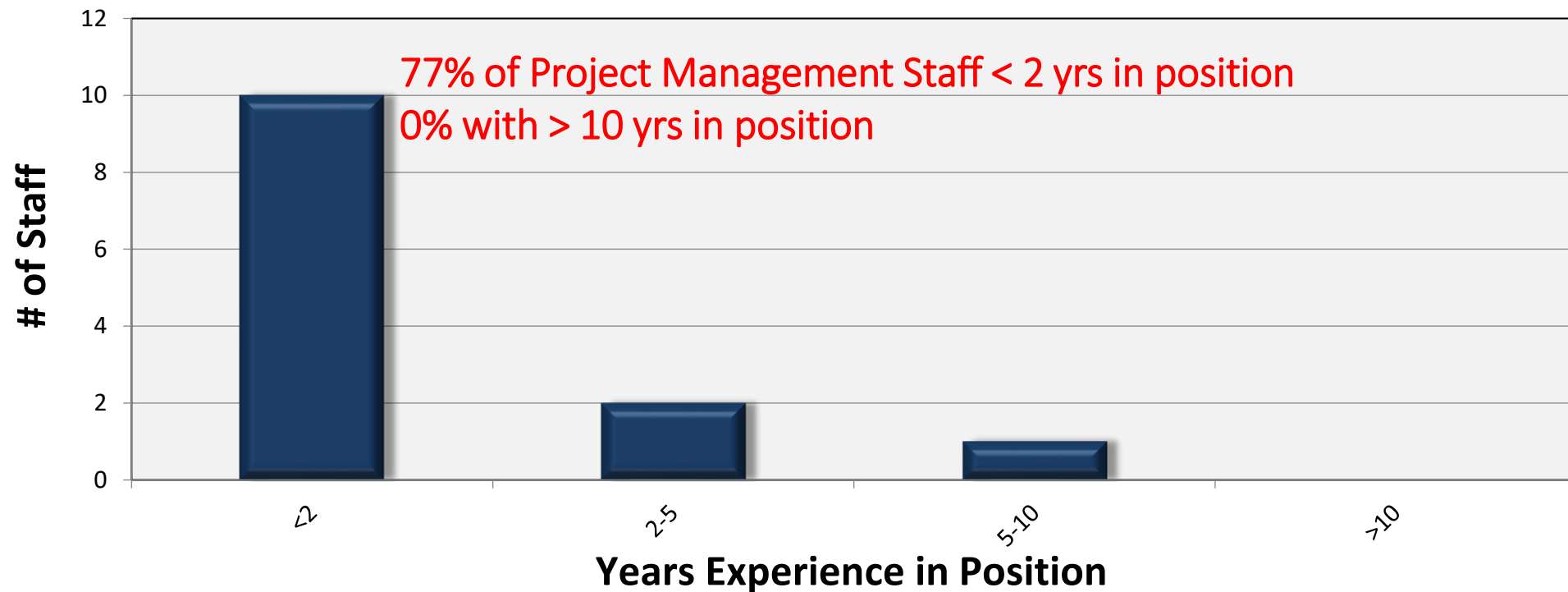


Design Staff Experience Profile



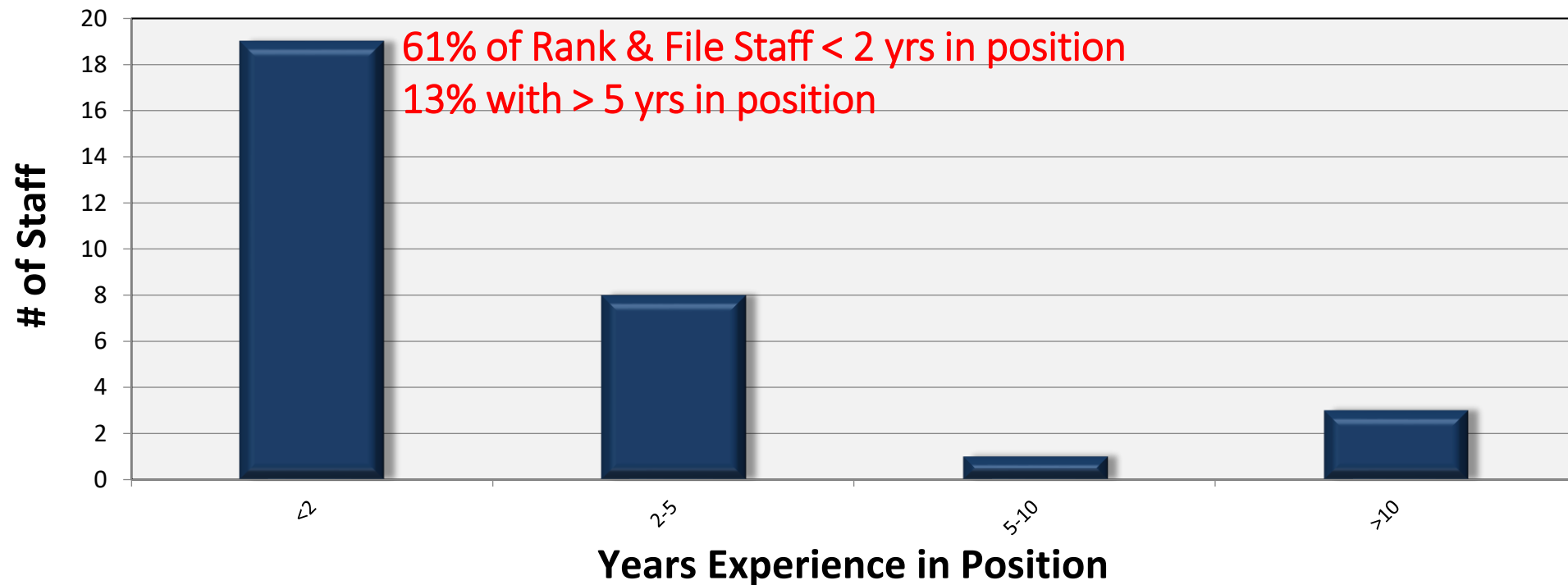
PROJECT MANAGEMENT STAFF – PLANS DEVELOPMENT

**Project Management Experience Profile
(January 2025)**



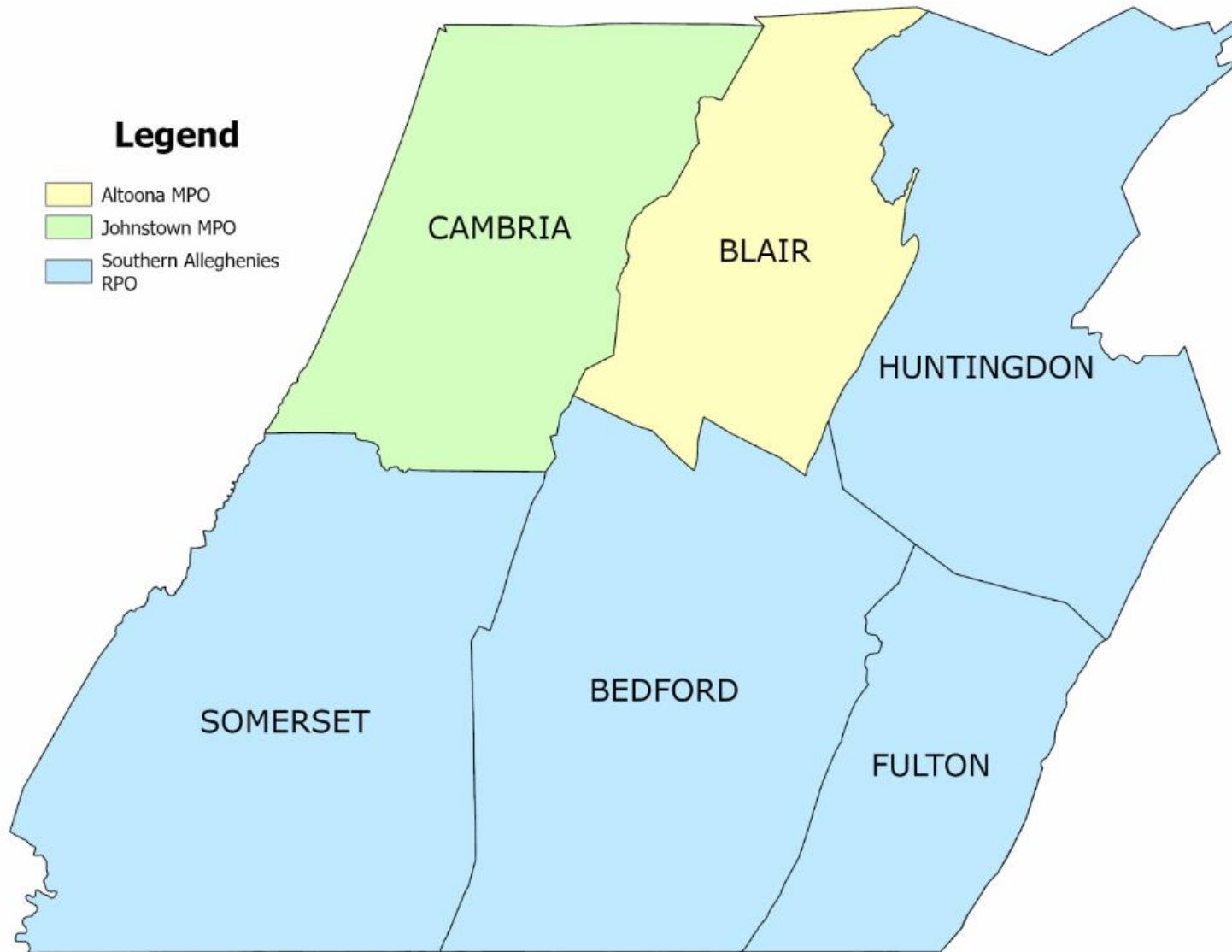
RANK & FILE STAFF – PLANS DEVELOPMENT

**Rank & File Experience Profile
(January 2025)**



2025 PROGRAM OVERVIEW & CHALLENGES

DISTRICT 9: OVERVIEW

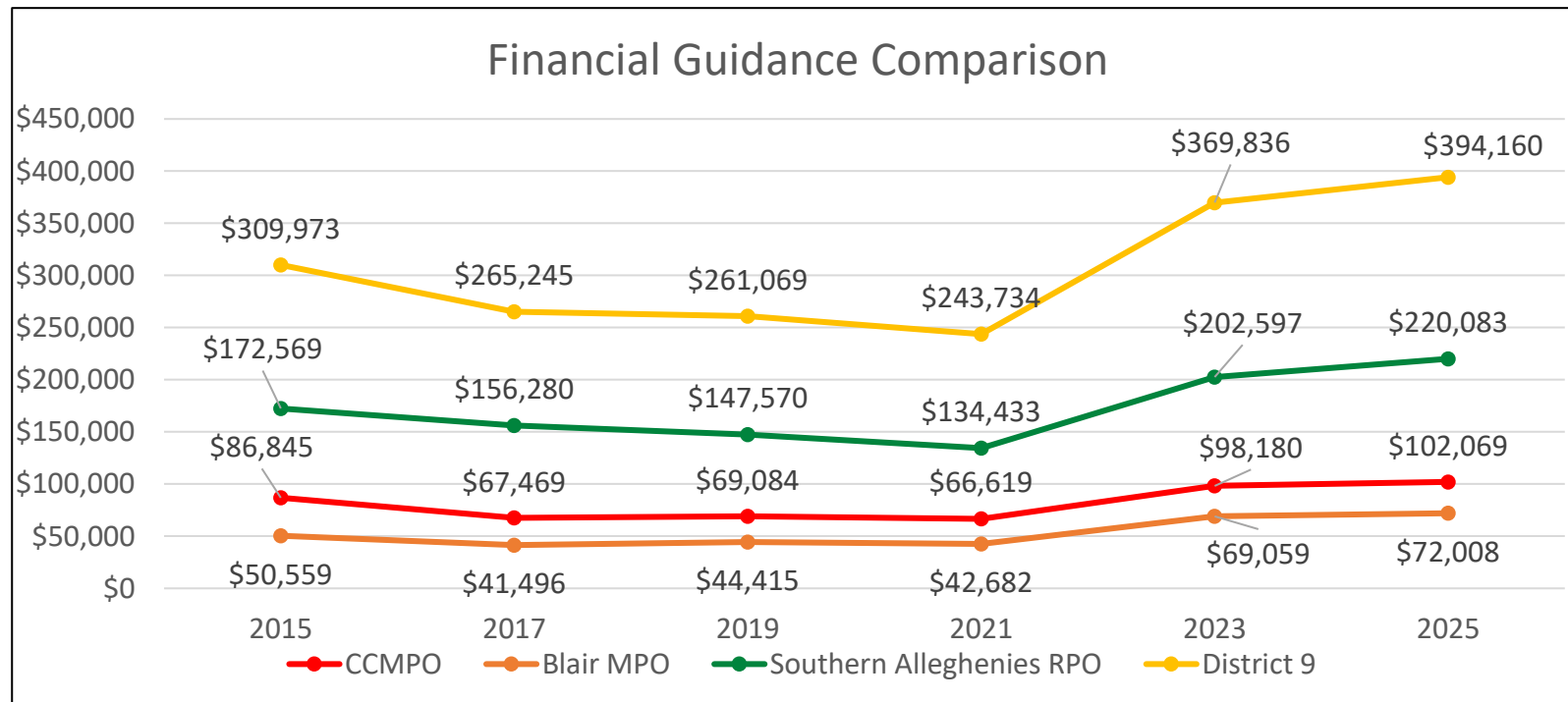


- 6 Counties
- 883 Employees
- Bridges
 - 2,100 State Bridges
 - 2.0% Poor Deck Area
 - 465 Local Bridges
 - 19.0% Poor Deck Area
- 4,004 Miles of Roadway
 - 15.4% Poor IRI



TIP FINANCIAL GUIDANCE COMPARISON

	Act 89				BIL		2023-2025 TIP Difference	
Planning Region	2015 TIP (000's)	2017 TIP (000's)	2019 TIP (000's)	2021 TIP (000's)	2023 TIP (000's)	2025 TIP (000's)	\$ (000's)	%
CCMPO	\$ 86,845	\$ 67,469	\$ 69,084	\$ 66,619	\$ 98,180	\$ 102,069	\$ 3,889	4.0%
Blair MPO	\$ 50,559	\$ 41,496	\$ 44,415	\$ 42,682	\$ 69,059	\$ 72,008	\$ 2,949	4.3%
S Alleghenies RPO	\$ 172,569	\$ 156,280	\$ 147,570	\$ 134,433	\$ 202,597	\$ 220,083	\$ 17,486	8.6%
District 9-0	\$ 309,973	\$ 265,245	\$ 261,069	\$ 243,734	\$ 369,836	\$ 394,160	\$ 24,324	6.6%



ASSET CONDITION

State Route System

	Statewide	Districtwide	Southern Alleghenies	Cambria County	Blair County
Poor IRI, miles (%)	10,005 (23.3%)	613 (15.4%)	466 (17.3%)	111 (15.2%)	35 (6.5%)
Poor Bridge, # (%)	2,302 (9.1%)	121 (5.8%)	109 (7.5%)	7 (2.1%)	5 (1.5%)

Additional Statistics

Bridges (Total Brdgs / Average Age)

- Districtwide: 2,100 / 50 yrs
- Southern Alleghenies: 1444 / 52 yrs
- Cambria County: 332 / 47 yrs
- Blair County: 324 / 45 yrs

Roads (Miles / Ave Built Yr / Ave Resurf Yr)

- Districtwide: 4,004 / 1952 / 2014
- Southern Alleghenies: 2,724 / 1952 / 2014
- Cambria County: 740 / 1951 / 2014
- Blair County: 540 / 1954 / 2015

*The 2 oldest state bridges in District 9 are masonry stone arches that carry Route 53 in Cambria County. Both were built in 1832 and rehabbed in 2019 and 2020. Neither are in Poor condition.



BRIDGE CHALLENGES

US 22 OVER JUNIATA RIVER

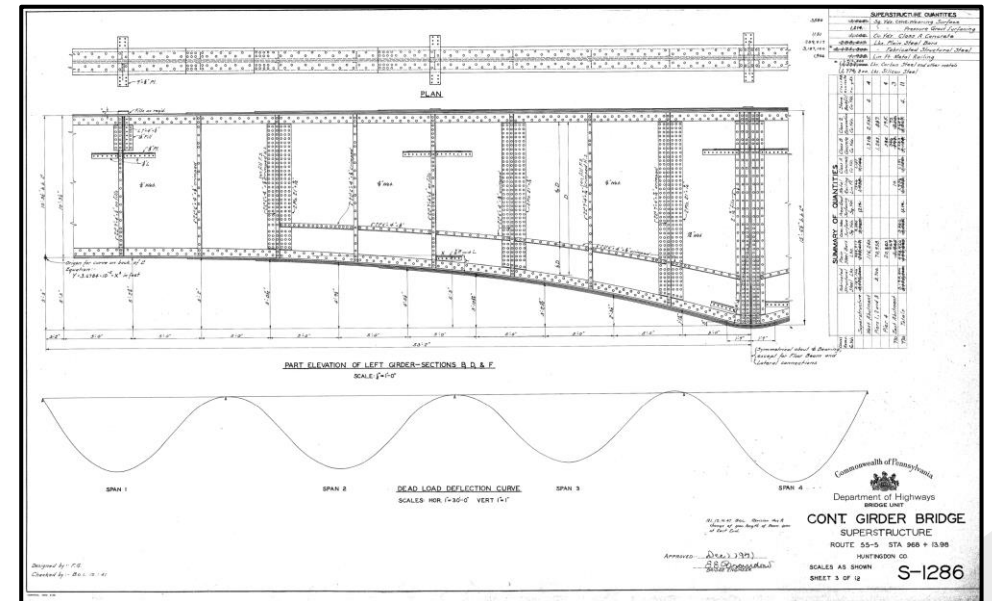
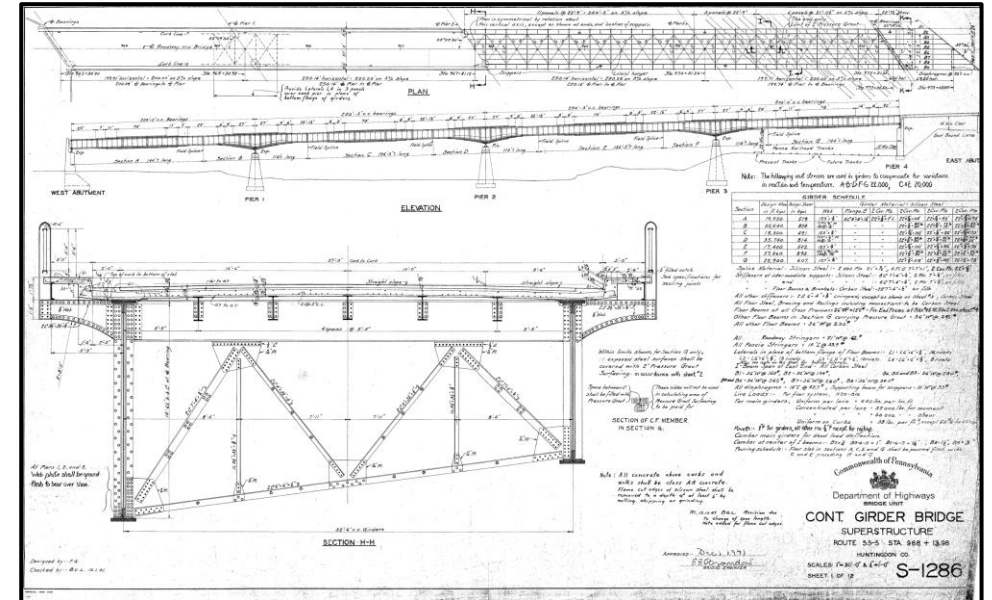


- Features:
 - Over SR 1010 (Penn St), Railroad, Juniata River
 - Length: 983'
 - Spans - 5
 - Width: 47'
 - Traffic Volume: 9,540 vehicles per day



US 22 MILLION DOLLAR BRIDGE

- Original Construction:
 - Constructed: 1949
 - Cost: Around \$1 million
 - 13 Sheet Structure Plan
 - Life Expectancy: Believed to be 75 yrs
- Maintenance and Rehabilitation Work
 - 2007 – Rehabilitation Project: Complete Deck & Partial Superstructure Replacement
 - Construction Cost: \$11.2 million
 - 57 Sheet Structure Plan



US 22 MILLION DOLLAR BRIDGE

- Replacement Considerations:
 - 75 yr Life Expectancy for Original Build ~ 2024
 - Replacement Cost:
 - Pre-Construction Cost: \$10 million
 - Construction Cost: \$35 million
 - Total Cost: \$45 million



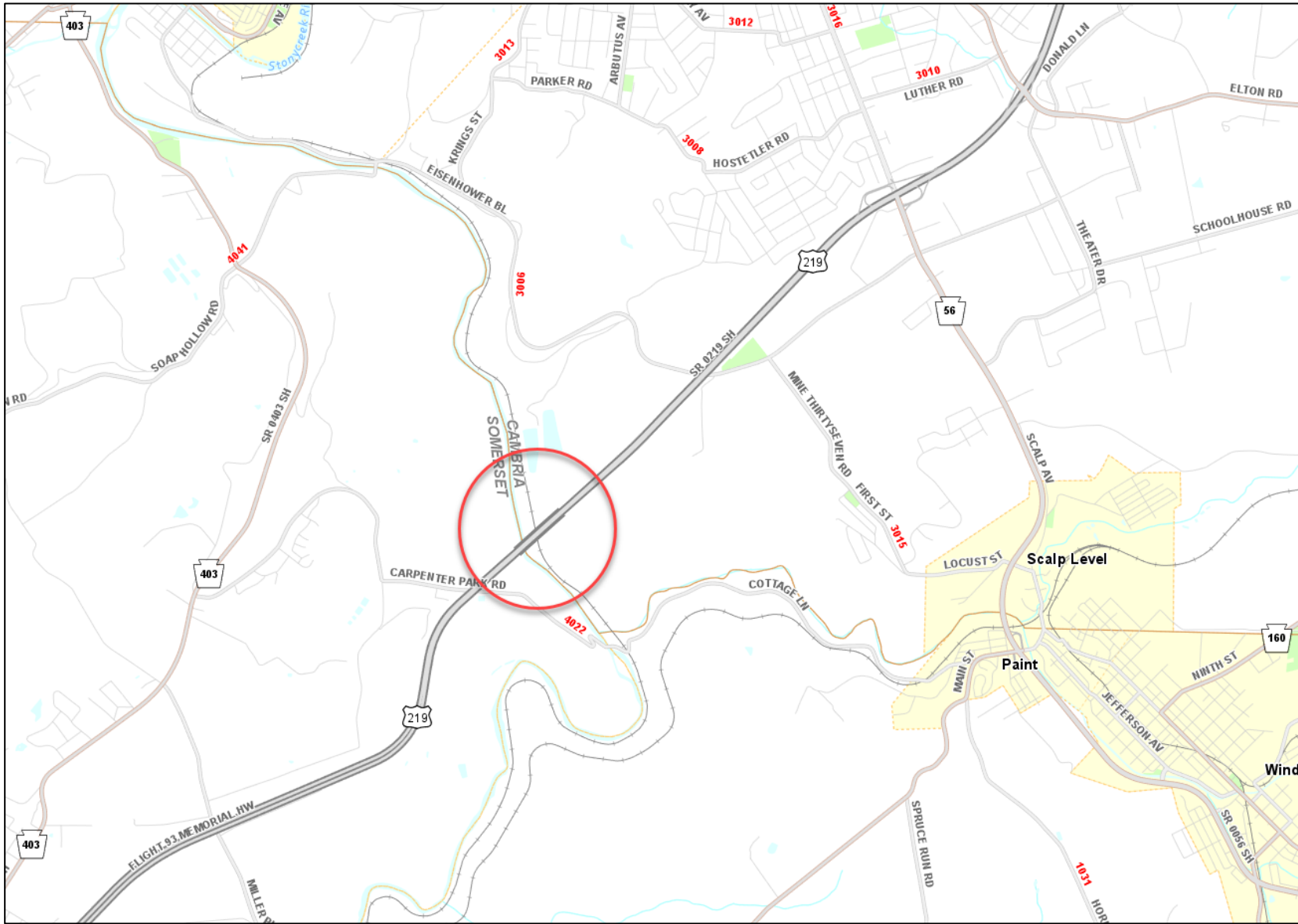
MCNALLY BRIDGE STUDY



- Study of bridge on US 219 over CSX Railroad and Stonycreek River in Conemaugh Township, Somerset County and Richland Township, Cambria County
- **Estimated Cost:** \$350,000
- **Estimated Completion:** 2025



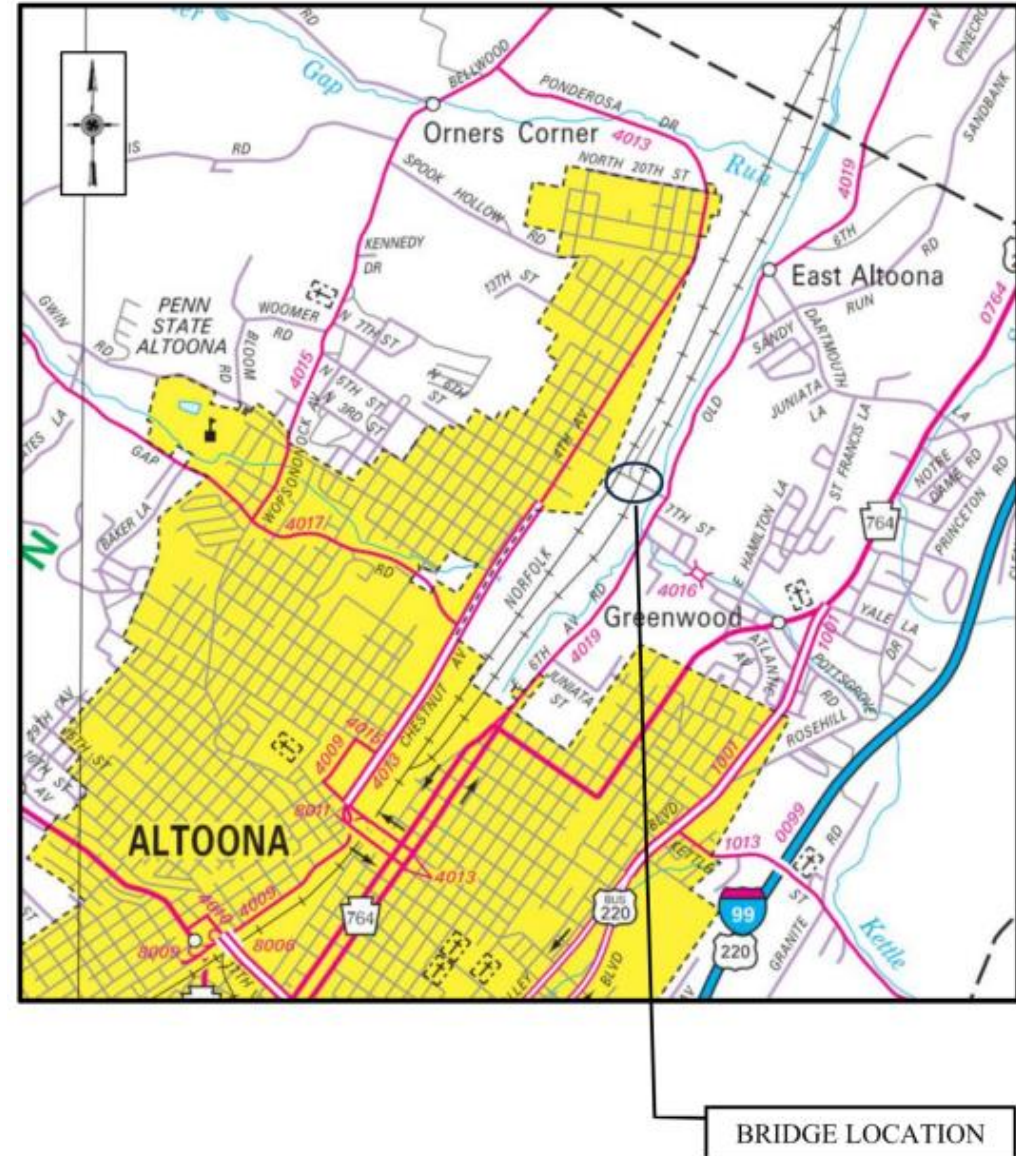
M McNALLY BRIDGE STUDY



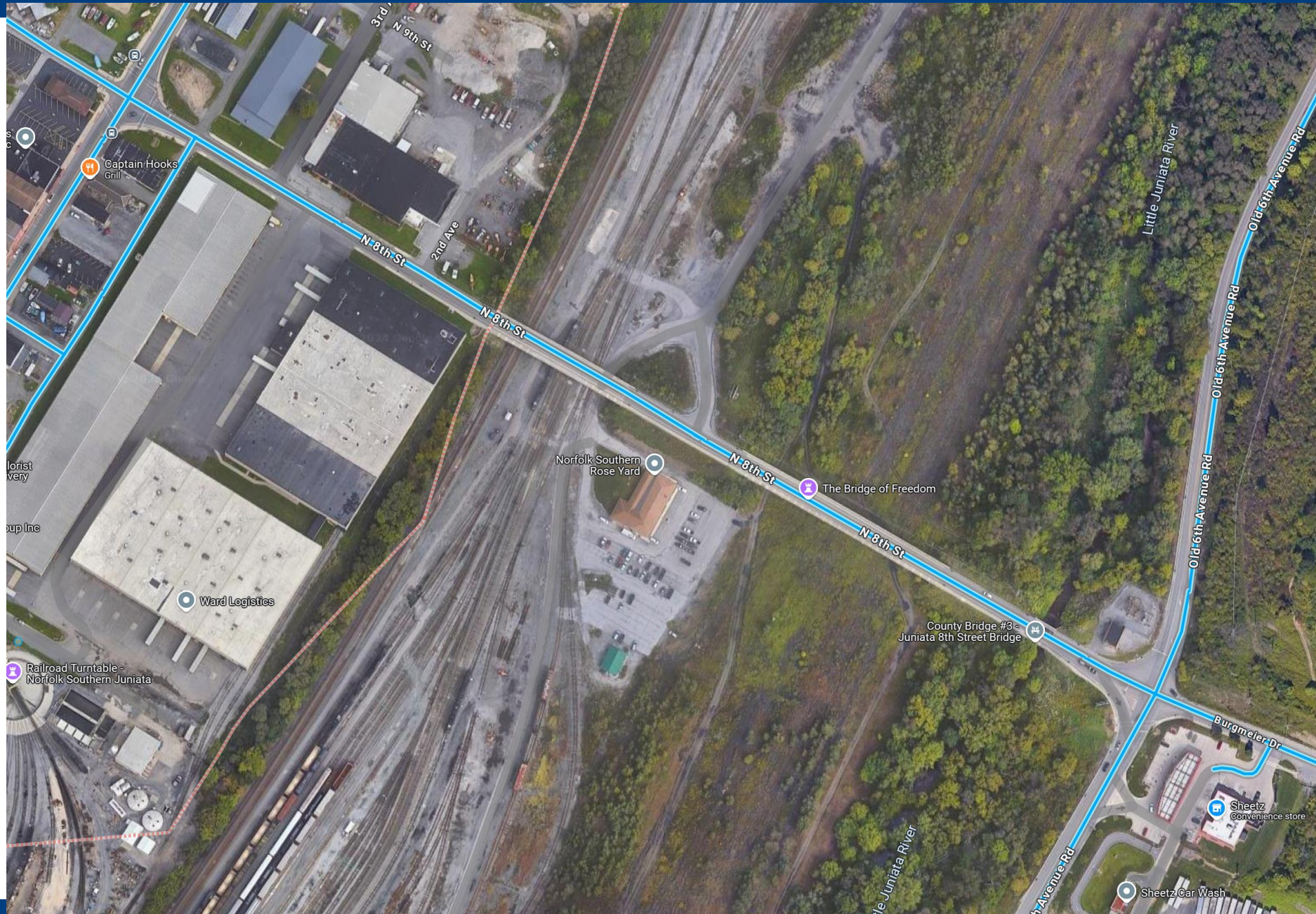
BLAIR COUNTY 8TH STREET BRIDGE



- **Location:** Carrying 8th Street Over Norfolk Southern RR in Juniata
- **Current Status:** Load Posting of 29/33 Tons with June 2024 Inspection
- Full/Superstructure Replacement
- **Anticipated Cost :** TBD
- **Construction Year:** Unfunded



BLAIR COUNTY 8TH STREET BRIDGE



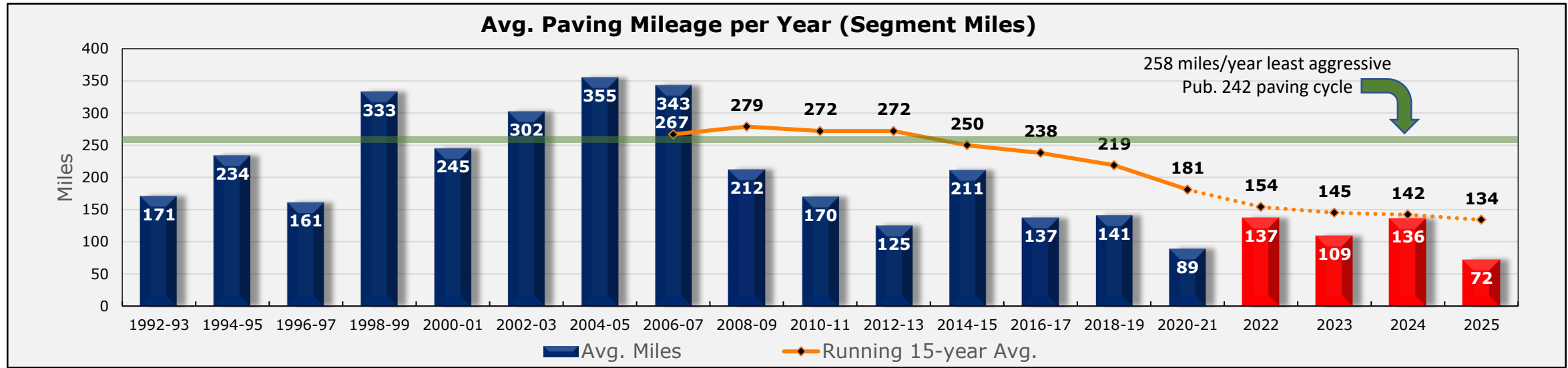
ROADWAY CHALLENGES

2023-2025 CY LETTINGS DISTRICT 9-0

	2023	2024	2025
Construction Estimate	\$125 million	\$138 million	\$116 million
Letting Count	46	42	50
Miles Resurfaced	102	147	102
Number of Bridges	70	64	49
Safety Projects	9	7	9

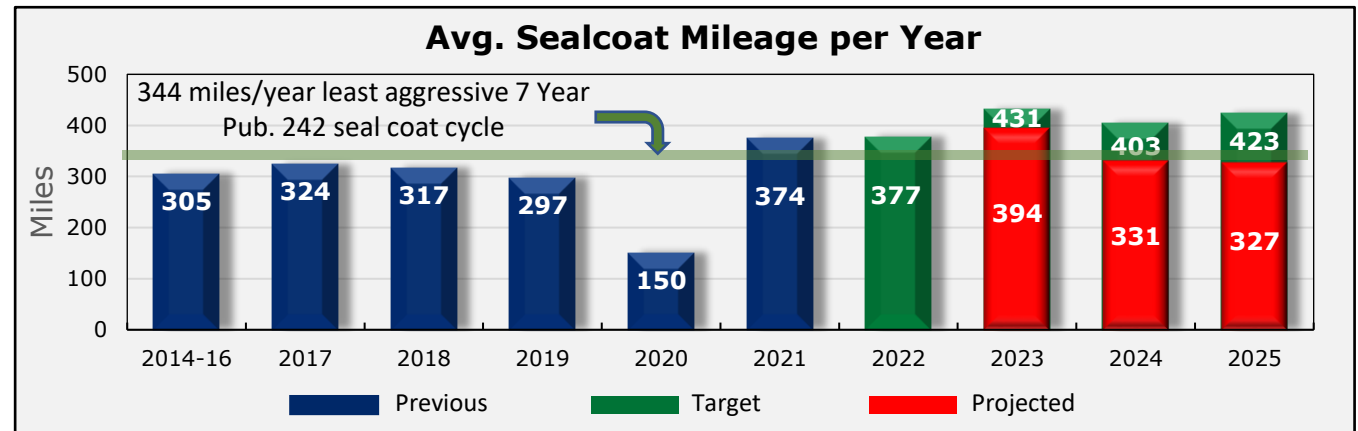


ASSET MANAGEMENT UPDATE & FUTURE PLANS - ROADWAY



CHALLENGES

- 409 funds have traditionally funded much of our asphalt paving
- Higher costs for contracted asphalt paving
- Balancing priorities for drainage, guiderail, ADA, tree trimming, sign updates, safety, geotechnical while still paving as much mileage as practical
 - Early 2000's maintenance funded resurfacing ~ 90% of funds went directly into paving
 - Current maintenance funded resurfacing ~ 60-65% of funds going to paving (35-40% for other priority work)



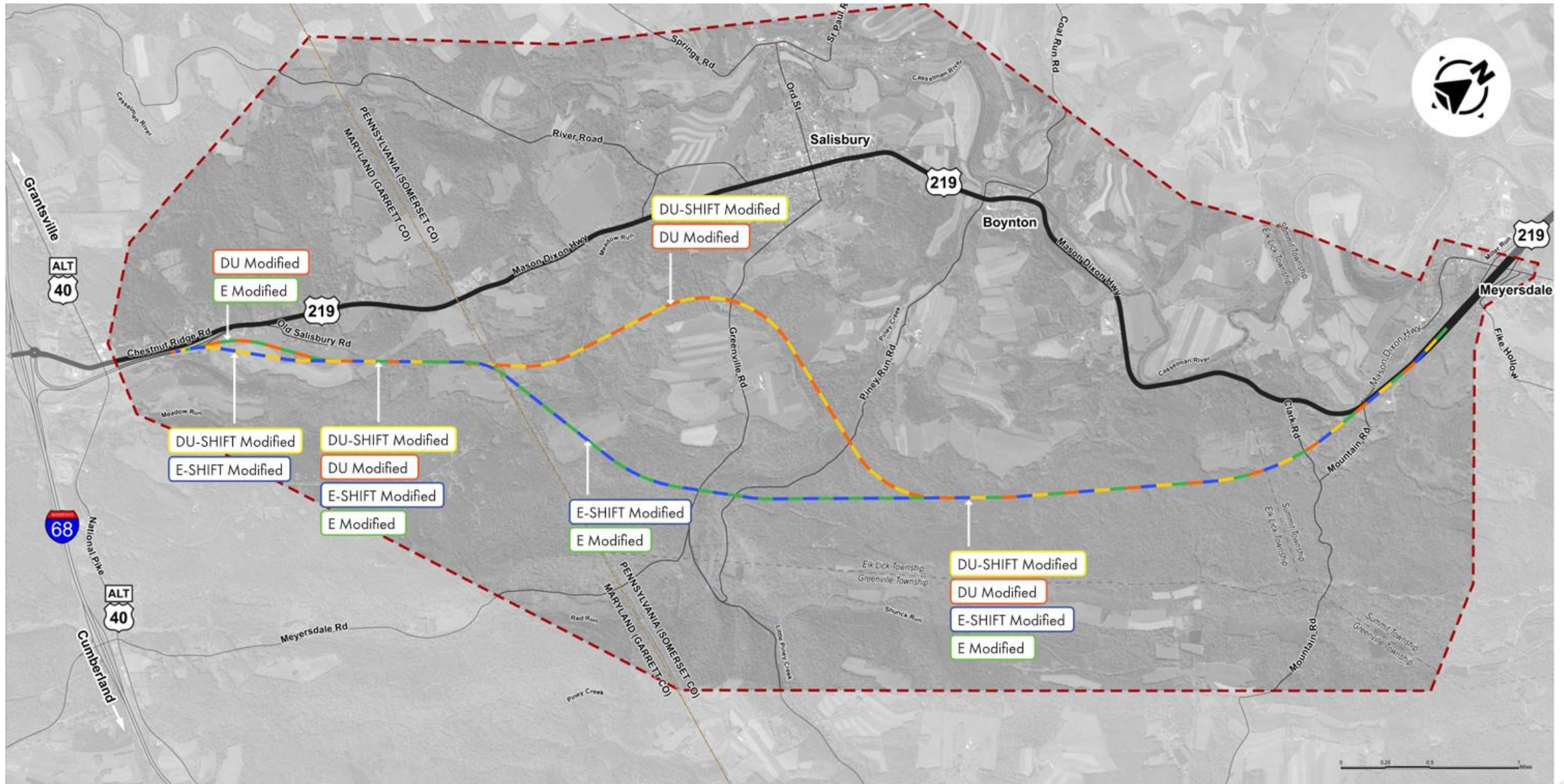
FUTURE PLANS

- Continue to pursue more seal coats, surface treatments (double seals), and fog seals to stretch the dollars and maintain pavement assets
- Perform prep work with maintenance forces on BPN 3 and 4 prior to paving contracts to save costs



UPCOMING OPPORTUNITIES

US 6219-050 MEYERSDALE TO OLD SALISBURY RD



US 6219-050 MEYERSDALE TO OLD SALISBURY RD



PHASE 1: ENVIRONMENTAL CLEARANCE

Public Meeting No. 1 to Present Detailed Alternatives - **JUNE 23, 2022**

Public Meeting No. 2 to Present Detailed Alternatives - **NOVEMBER 16, 2023**

Newsletter No. 1 to Present Recommended Preferred Alternative - **SPRING 2024**

Circulate Draft Environmental Impact Statement (DEIS) - **FALL 2024**

Conduct Public Hearings - **DECEMBER 11 AND 12, 2024**

**WHAT'S
NEXT**

Public Meeting No. 3 to Present Selected Alternative & Mitigation - **SPRING 2025**

Complete Final Environmental Impact Statement (FEIS) and issue Record of Decision (ROD) - **SUMMER 2025**



PHASE 2: PRELIMINARY ENGINEERING (FULLY FUNDED)

Complete Preliminary Engineering Design - **2023 to 2025**



PHASE 3: FINAL DESIGN (FULLY FUNDED)

Complete Final Design & Right-of-way Acquisition - **2025 to 2028**



PHASE 4: CONSTRUCTION (CONTINGENT UPON FUNDING)

Complete Construction - **2029 to 2031**



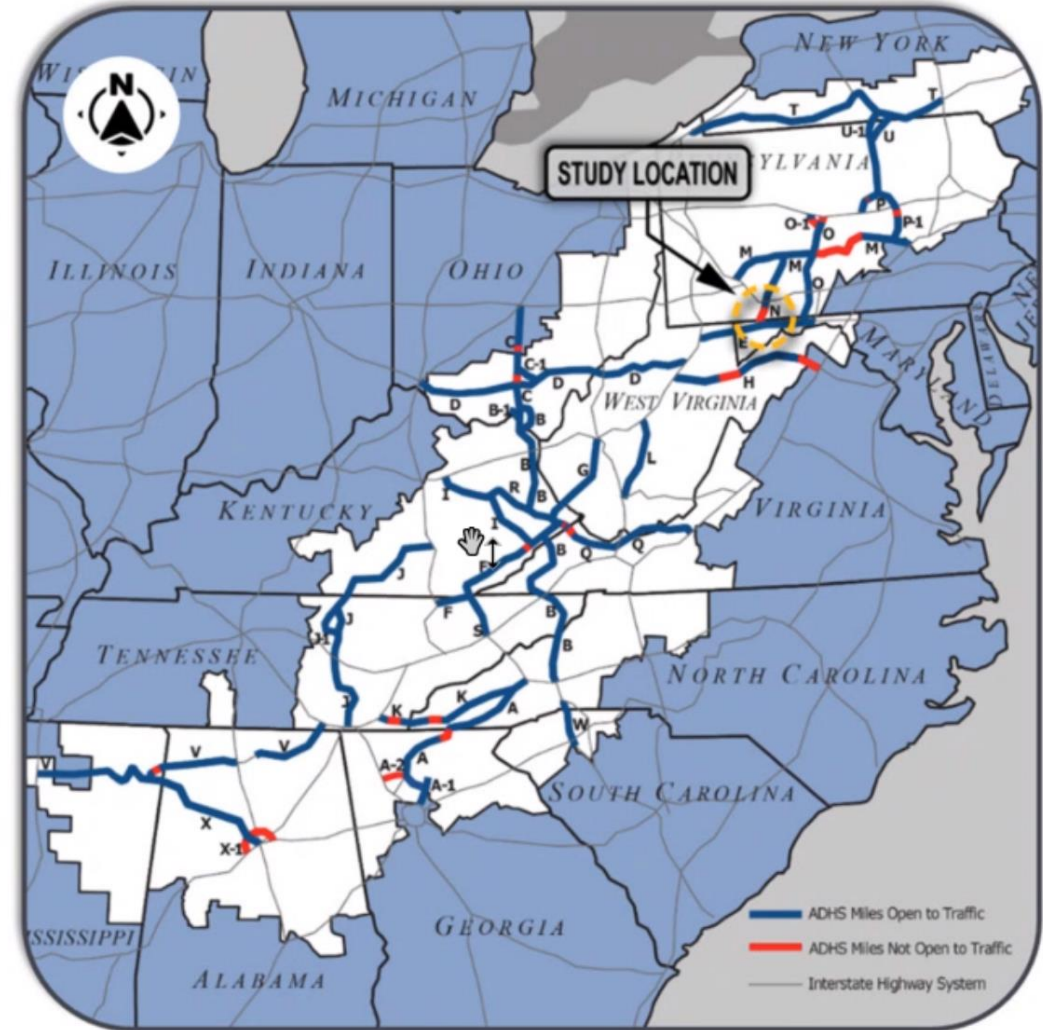
Current Schedule & Funding:

- **Pre-Construction Phases:**

- **Preliminary Engineering ~ \$17M**
 - NOI Published in Federal Register ~ June 2, 2023
 - Record of Decision ~ Anticipated Summer 2025
- **Final Design ~ \$17M**
 - Begin ~ Fall 2025
- **Right-Of-Way ~ \$25M**
 - Begin ~ Winter 2025
- **Utilities ~ \$8M**
 - Begin ~ Winter 2025

- **Construction Phase:**

- Anticipated 2029 - 2031
- **Estimated Cost**
 - **PA COST ~ \$270M**
 - Secured ~ \$136M (On TYP)
 - Shortfall ~ \$134M
 - **MD Cost ~ \$59M**



DESIGN AGREEMENTS

Active/Executed Agreements (as of January 2025)

- 51 active agreements
 - Open Ends - 11
 - Project Specific - 40

2024 Agreements

- Open End – 3 Agreements
- Project Specific – 20 Agreements (9 were announced 1/8/25)

2025 Agreement Projections

- Open Ends - 1
- Project Specific:
 - Group Advertisements & Multi-Bridge Agreements TBD
 - Estimating 10 to 15 Agreements
 - 3 Roadway/Intersection Projects
 - 22 Bridges



CONSTRUCTION INSPECTION AGREEMENTS

- Active/Executed Agreements (as of January 2025)
 - 8 project specific agreements
 - 8 open-end agreements
- 2024 Agreements
 - 4 project specific agreements
 - 2 open-end agreements
- 2025 Agreement Projections
 - 0 project specific agreements
 - 1 or 2 open-end agreements
- During 2024 Construction Season:
 - 31 projects were supplemented with consultant inspection



KEY POINTS OF SUCCESS

- Proactive Project Management
 - Something is going to happen
 - Key is to identify it early
- Lead Us To the Letting – Not the other way around
 - Identify/Option/Recommendation
- Own your QA/QC Program
 - Every submission to the Department should be reviewed
- Why should we hire you?



THANK YOU

Questions

