



AI's Role in Securing AEC Data: Paving the Path Forward

Satyam Verma

AEC Practice Leader, Egnyte

Agenda

01

About Egnyte

02

AEC Firms = Data Companies

03

AI's Role in Securing AEC Data

04

Seeing AI as a Guiding Hand

About Egnyte

Content Management, Data Security, Compliance, and AI in One Unified, Turnkey Platform



Trusted by AEC Companies Worldwide

Architecture | Engineering | Contractors | Owners



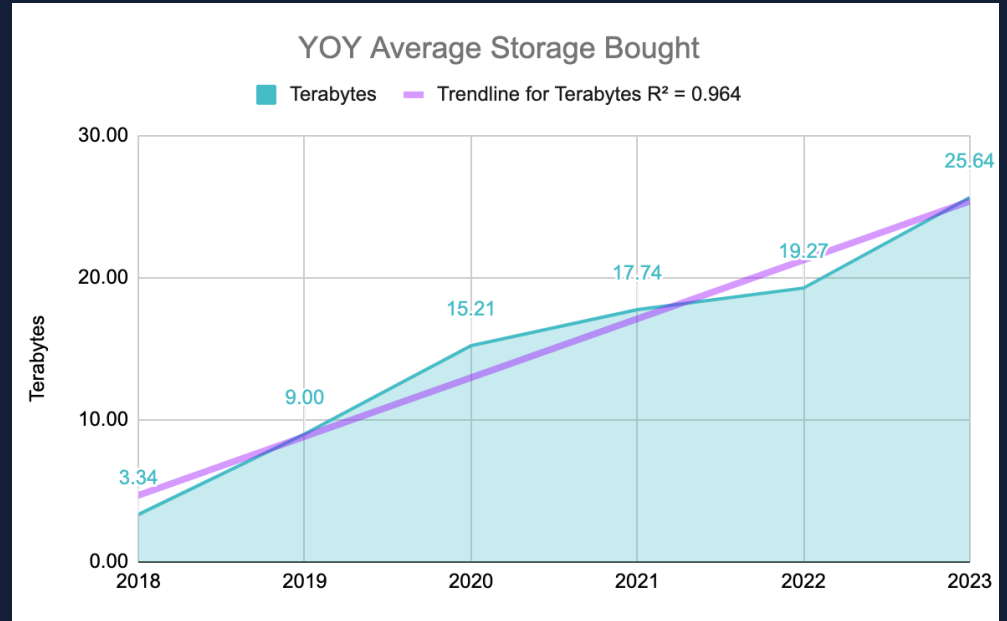
The structures we see
reaching for the skyline are
not just feats of design and
engineering but **archives of
data.**



AEC Firms are Data Companies

KEY DRIVERS

- Cloud-based collaboration
- Mergers & Acquisitions
- Data-Intensive Processes
- Compliance and Retention



Source: 2024 AEC Data Insights Report

The Risks of Unmanaged Data Growth



- Multi-cloud sprawl and data ownership
- Version conflicts and duplication of data
- Uncontrolled sharing and data exposure

Risks: Multi-cloud Sprawl

- Staff are collaborating across multiple systems.
- Data ownership, stewardship, and confidentiality are becoming fuzzy
- This leads to wasted time, effort, and potential security shortfalls



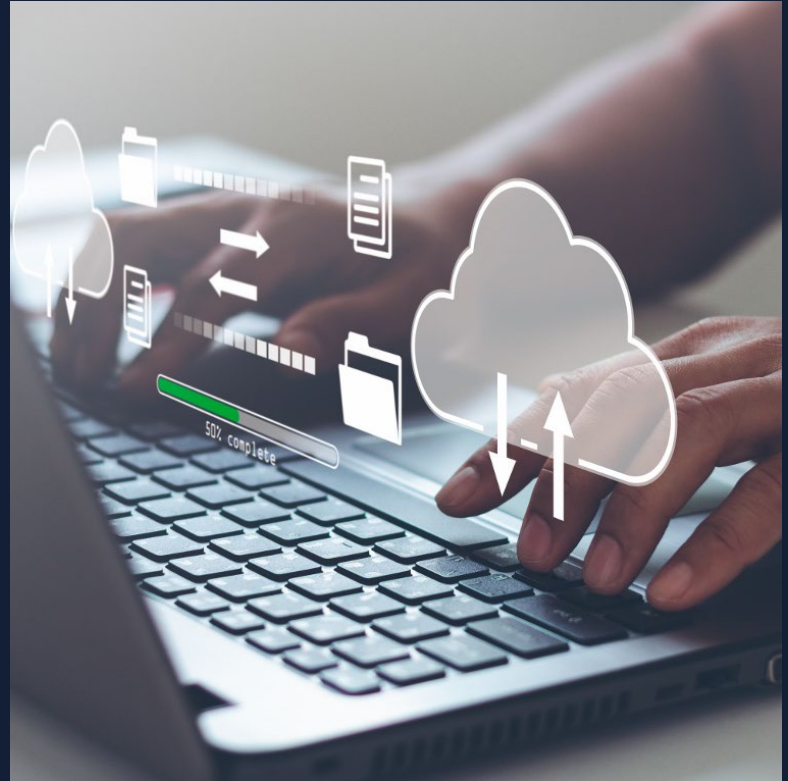


Risks: Conflicts, Duplication

- Teams are predisposed to saving offline copies of files
- Information can quickly get out of sync, lost, or overwritten
- This leads to delays, confusion, and disruption

Risks: Uncontrolled File Sharing

- Files are often shared via email attachments
- This offers no oversight on use or confidentiality of data
- Links to shared files cannot be managed after the fact



Golden Rules of AI

Train YOUR
Data



Trust but
VERIFY



Keep it
IN-HOUSE



This is where **AI** can help!


Building the future: Using AI in structural engineering

May 8, 2024



AI is Coming, Are You Ready?

The construction industry is embracing a digital revolution, with artificial intelligence (AI) emerging as a transformative force. Historically, construction has relied on manual labor and traditional project management techniques, but the advent of AI offers a new approach that optimizes efficiency and enhances safety. AI technologies, such as machine learning algorithms and computer vision, are streamlining processes across the construction lifecycle.



LATEST

How civil engineers can use generative AI to create value in projects

11 DEC, 2023 | BY MICHAEL RUSTELL

I have been building artificial intelligence (AI) for civil engineering – mega projects, oil and gas and forensic engineering for almost 15 years. During this time I have seen nearly all AI projects fail. If you are not someone reading, it is a waste of time.


BUILDING TECHNOLOGY

Let's chat about AI: How design and construction firms are using ChatGPT

Advances in artificial intelligence are producing sophisticated content. But the quality and quantity of data will determine AI's usefulness for building design and construction.

BY JOHN CAULFIELD, SENIOR EDITOR | APRIL 24, 2023

f x in e



FORBES > INNOVATION > ENTERPRISE TECH

How Generative AI Will Change The Jobs Of Architects And Civil Engineers

Bernard Marr Contributor @

Follow

Mar 16, 2024, 03:05am EDT

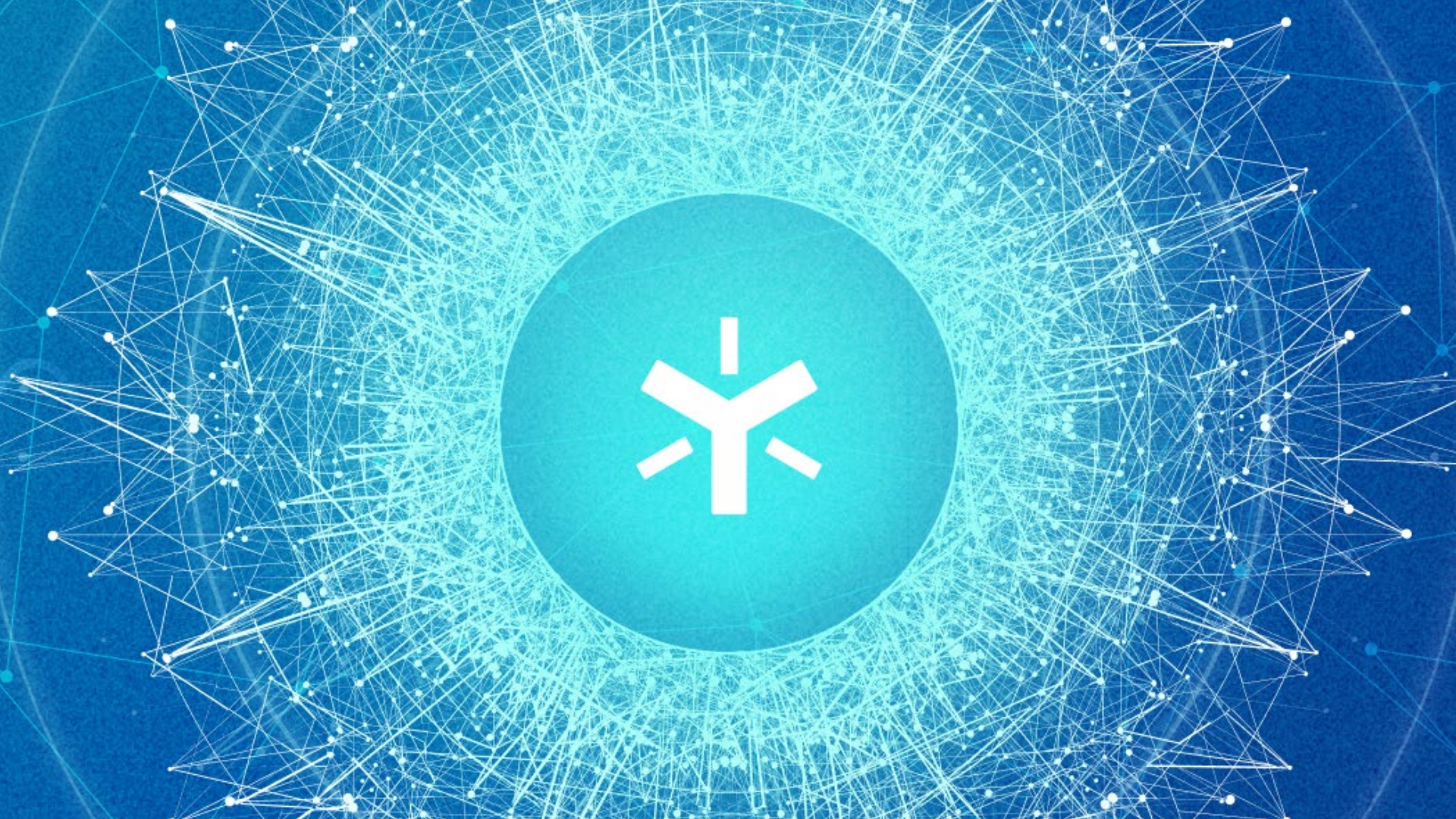


How Generative AI Will Change The Jobs of Architects and Civil Engineers. ABOVE: ISTOCK

Opening the AI Toolkit

Areas to consider include:

- Aligning permissions and restrictions.
- Selective inclusion/exclusion of files.
- Safeguards against data leaks.
- Ensuring the veracity of AI-generated insights.



AI & Knowledge Bases

Act on data instead of searching for it



General
Knowledge Bases

- "Chat" with your content, Q&A style UI
- Folder or collection of folders in scope
- Get precise answers, summaries with excerpts from the actual document



Industry
Knowledge Bases

- Gain insights across your project-related content
- Analyze design files, specifications, and other project content for deeper insights

AI & Smart Tagging

Manage content by what it is, not where it is



Document
Tags

- Add tags (metadata) to documents by their content, at scale
- Classify and control confidential customer or project content
- Automate life-cycling and segregation (such as CMMC)



Image
Tags

- Add tags to images by what's 'seen', at scale
- Search for similar images, like 'suspension bridge', across your entire data set
- Search for images captured within a certain geo-location, like SLC airport

Copilot: AI-powered Content Insights

The screenshot shows a file explorer interface with a sidebar on the left, a main content area, and a right-hand panel. The sidebar contains a 'Bookmarks' section and a 'Shared' section with folders like 'Documents', 'Egnyte Templates', and 'KBA'. The 'KBA' folder is expanded to show 'Building Codes', which contains sub-folders for 'CA Building Code', 'International Building', 'Egnyte', 'OSHA', 'Shortcut test', and 'xlsx'. The main content area shows a table of items within the 'KBA' folder, including 'Build...', 'Egnyte', and 'OSHA', each with a 'Knowledge Base' tag. The right-hand panel is titled 'Building Codes Assistant' and contains a chat window with a welcome message and a text input field with the question 'What is the time limit for filing for a refund'. The input field has 'Clear Chat' and 'Send' buttons.

Bookmarks

Shared

- Documents
- Egnyte Templates
- KBA
 - Building Codes
 - CA Building Code
 - 2022 CA Admir
 - 2022 CA Buildi
 - 2022 CA Fire C
 - International Buildir
 - Egnyte
 - OSHA
 - Shortcut test
 - xlsx
- Kevin Soohoo
- All Private Folders

... / KBA

Search in this folder...

Create Upload Share Download More

Item name	Status	Size
Build... Knowledge Base		-
Egnyte Knowledge Base		-
OSHA Knowledge Base		-

Building Codes Assistant

Welcome to Building Codes Assistant Knowledge Base! Any related question I can answer for you?

What is the time limit for filing for a refund

Clear Chat Send

Smart Apps: Smart Spec

Egnyte | Smart Specifications

22 0725 - Draft Bid Set - Project Manual_final 2.pdf

Filter by sections & values

Table of contents

Search sections

- > DIVISION 00 - PROCUREMENT AND CONTRACTING REQUIREMENTS
- > DIVISION 01 - GENERAL REQUIREMENTS
- > DIVISION 02 - EXISTING CONDITIONS
- > DIVISION 03 - CONCRETE
- > DIVISION 05 - METALS
- > DIVISION 06 - WOOD, PLASTICS, AND COMPOSITES
- > DIVISION 08 - OPENINGS
- > DIVISION 09 - FINISHES
- > DIVISION 10 - SPECIALTIES
- > DIVISION 12 - FURNISHINGS
- > DIVISION 22 - PLUMBING
- > DIVISION 23 - MECHANICAL
- > DIVISION 26 - ELECTRICAL
- > DIVISION 27 - COMMUNICATIONS
- > DIVISION 28 - ELECTRONIC SAFETY AND SECURITY

96%

Chodini Architects
Project Number: 2020.047

St. Louis County IT Department
St. Louis, Missouri

SECTION 00 0001 - PROJECT TITLE PAGE
PROJECT MANUAL
FOR
ST. LOUIS COUNTY PUBLIC WORKS
ARCHITECT'S PROJECT NUMBER: 2020.047
ST. LOUIS COUNTY IT OFFICE AND HOTELING REMODEL
41 S CENTRAL AVE CONCOURSE LEVEL
CLAYTON, MISSOURI 63105
DATE: (DRAFT - NOT FOR CONSTRUCTION)
PREPARED BY:
CHODINI ARCHITECTS
END OF SECTION

PROJECT TITLE PAGE 00 0001 - 1

Reset to default view

Summary report



AI as a Guiding Hand

- Transform data infrastructure from passive repository to active custodian
- Organize and categorize information for clarity, accessibility, and analytics
- Facilitate conversations with other systems and users

The Umpire in the Cloud

- Ensure compliance with data protection regulations (e.g., GDPR, CCPA, etc.)
- Guide firms through ethical use and adherence to international privacy standards



A Human Behind the Curtain

- Human stewardship remains critical in AI-driven data control
- AI enriches human decision-making rather than replacing it
- We should seek to develop a symbiotic relationship between AI and ourselves to achieve better business results



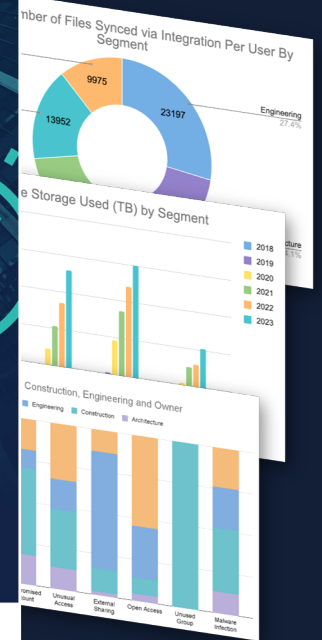
Embrace AI

Secure Your Data

Steer the Future

2024 AEC Data Insights Report

DOWNLOAD



Thank You!

Any Questions?