



ALLEGHENY COUNTY AIRPORT AUTHORITY

---

PITTSBURGH INTERNATIONAL AIRPORT  
ALLEGHENY COUNTY AIRPORT

**Airport Modernization Program**  
ACEC/PA Fall Conference – BFD Competition  
November 20, 2019





## VISION

To transform Pittsburgh's airports to reflect and serve the community, inspire the industry, and advance the region's role as a world leader.



# Why Modernize?

## PIT was Built for a Different Time and Purpose

- Built for 32 million passengers
- Primarily connecting traffic
- Designed and built for US Air
- Aging, inflexible, incorrectly configured systems: Checkpoints/ Baggage/ Underground Train/ Intl Arrivals
- Need consistent and predictable airline costs
- Need to provide a world-class passenger experience reflective of the region





# Building Through Collaboration – Expert Input

- Program Advisory Working Group
- Peer Review Board
- Working Groups:
  - ~ Accessibility
  - ~ Arts & Culture
  - ~ Ground Transportation & Parking
  - ~ Passenger Experience
  - ~ Sustainability & Landscape
  - ~ Technology





# Building Through Collaboration – Community & Vendors

- Community Outreach / Surveys
- Industry Days
- Vendor Product Pitch Fair
- Involving Front Line Staff in Design Decisions





# Our Future





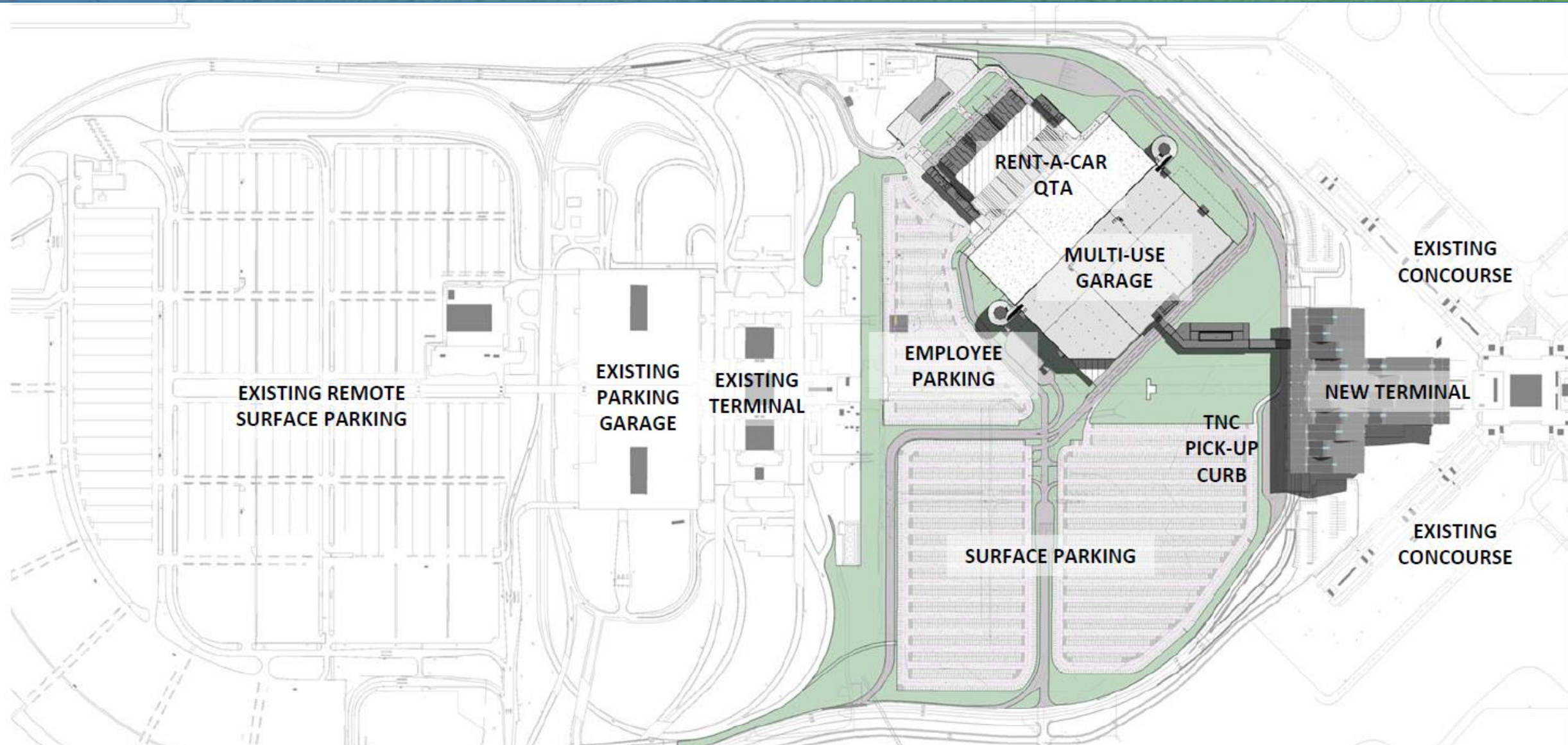
# Terminal Modernization Program – Two Parts

- **New Terminal** – A new terminal facility that consolidates landside and airside operations with more efficient technology and services
- **New Multi-Modal Complex (MMC)** – A new ground transportation center (with rental car services), parking garage, parking lots and roadways





# New Terminal and Multi-Modal Complex Layout





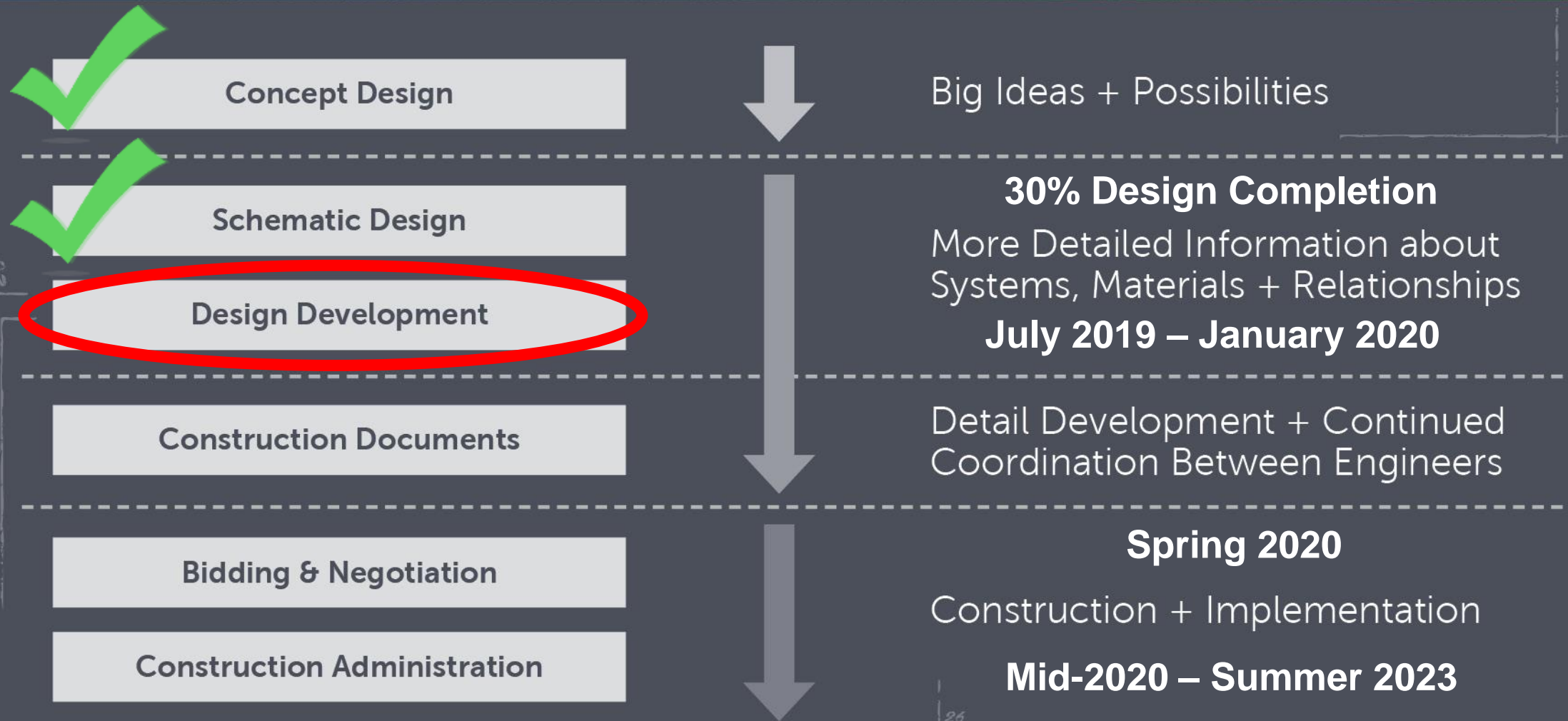
# An Improved Traveler Experience from Curb-to-Gate

- Shorter walking distances and security wait times
- Improved wayfinding
- Additional services and amenities
- Better technology
- An improved sense of Pittsburgh: Local restaurants, shops and artwork
- More efficient baggage handling
- Improved parking options
- **No local tax dollars used**





# Where We Are in the Program





# Ticketing Hall with View to Baggage Claim Area Below





# New Terminal to Have Connections to Nature





# Building a Smarter Airport Extends Beyond TMP

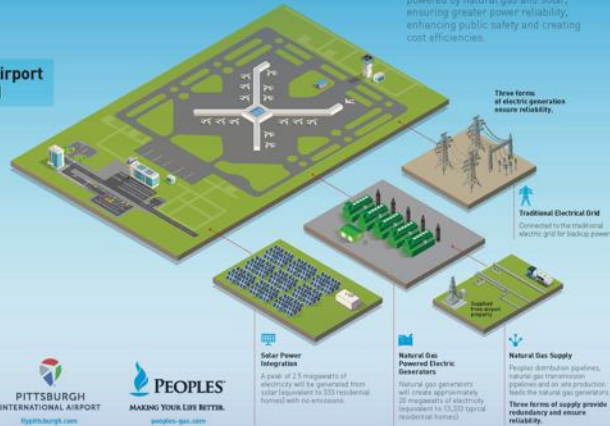
- **Airport Innovation Campus / Neighborhood 91** will make the airport corridor a center for additive manufacturing and support organizations
- Emphasis on building the region's capability as a cargo logistics center because of close proximity to runways and highways





# Microgrid and Neighborhood 91 Are Global Firsts

## Pittsburgh International Airport New Generation Microgrid



- First airport in the world to be entirely powered by its own microgrid
- Increased power reliability
- No cost to the airport; reduce utility costs for the airport and its tenants



- Additive Manufacturing cluster strategy
- Courting international tenants
- A game-changer: scalability, profitability



## First-ever condensed and connected ecosystem for PRODUCTION on airport property provides:

- PITTSBURGH AIRPORT  
**INNOVATION** CAMPUS





# Why Pittsburgh for Additive Manufacturing?

- Rich history and tradition in manufacturing
- The PA-OH region is world-renowned for additive manufacturing
- University of Pittsburgh: Research & Development and “New Collar” Workforce Development
- Carnegie Mellon University’s advanced manufacturing development activities are complemented by the PAIC/Production
- Robert Morris University, and other institutes of higher education in our region, eager to educate and train this “new collar” workforce





# Why Pittsburgh International Airport?

- Available land
- Microgrid: Competitive costs, resiliency
- Proximity to highways, railways, 3 rivers
- People, products, students/teachers anywhere in the world in 24 hours or less
  - Qatar Cargo: Doha, PIT, Chicago, Luxemburg
  - FedEx: Worldwide
  - UPS: Worldwide
  - British Airways: London
  - Condor Airlines: Frankfurt
  - Alaska Airlines: Seattle
  - American Airlines: Extensive NA network





# TMP Economic Impact

Will deliver long-term economic impact to the region, including:

- Generating about \$1.66 billion in economic activity
- \$710 million in direct labor income \*
- \$908 million in gross regional product / value \*
- Generating more than \$28 million in state and local income tax

\* 2017 values





# TMP Construction Jobs

- Expected addition of nearly 11,000 direct and indirect jobs
- Creation of more than 6,000 direct temporary design and construction jobs
  - ~ Almost 600 jobs in the pre-construction design phase (2018 – 2019)
  - ~ Over 5,500 jobs during the construction phase (2020 – 2023)

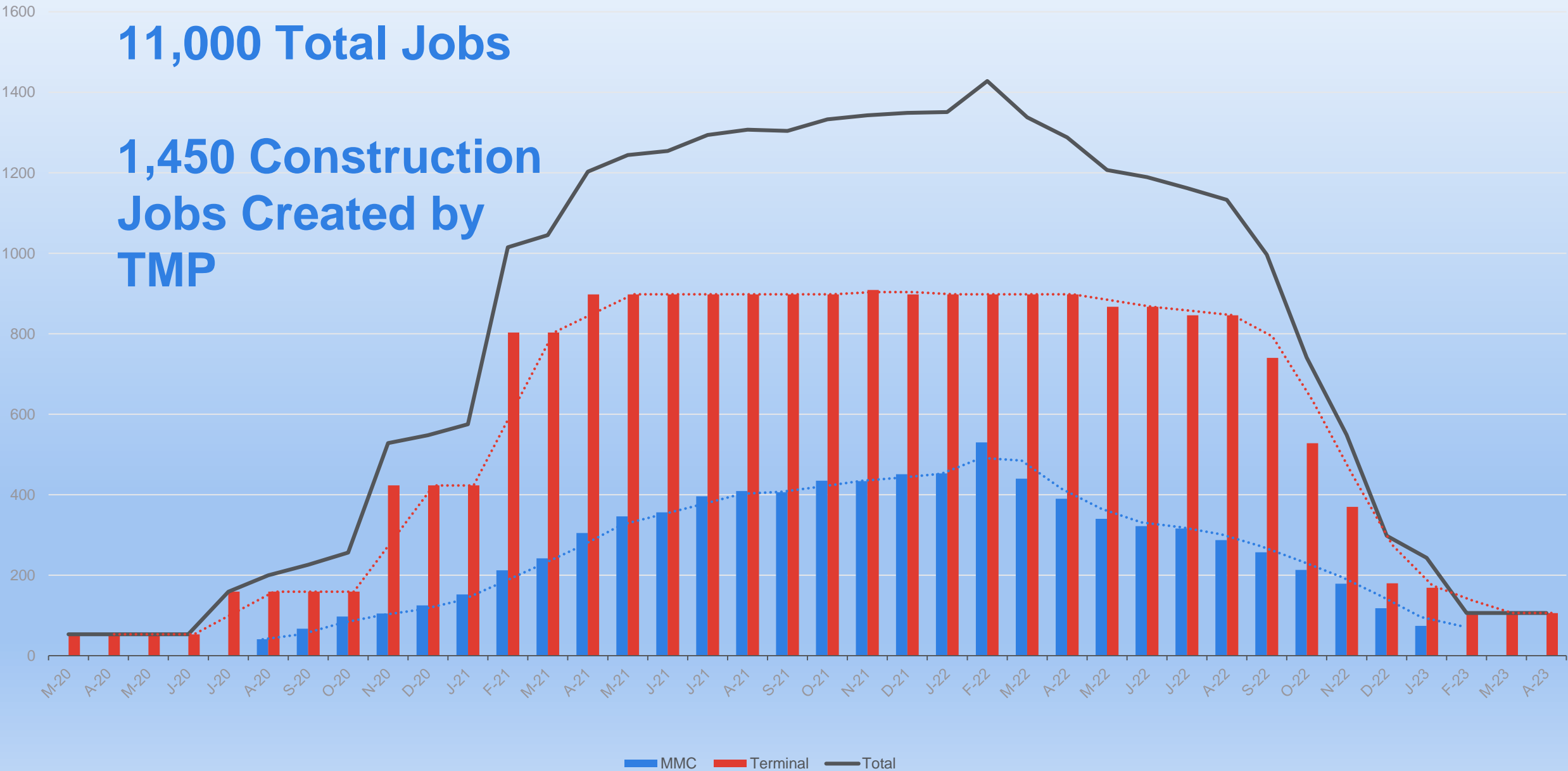




# AVERAGE PERSONNEL BY MONTH

11,000 Total Jobs

1,450 Construction  
Jobs Created by  
TMP





# What's Next?

- Design Development (July 2019 – January 2020)
- Early Site Preparation Packages (October 2019 – Spring 2020)
- Bond Financing (Early 2020)
- Construction Documents Development / Multiple Prime Contractors Selected (Spring 2020)
- Heavy Construction (Summer 2020 – Summer 2023)
- **Grand Opening (2023)**

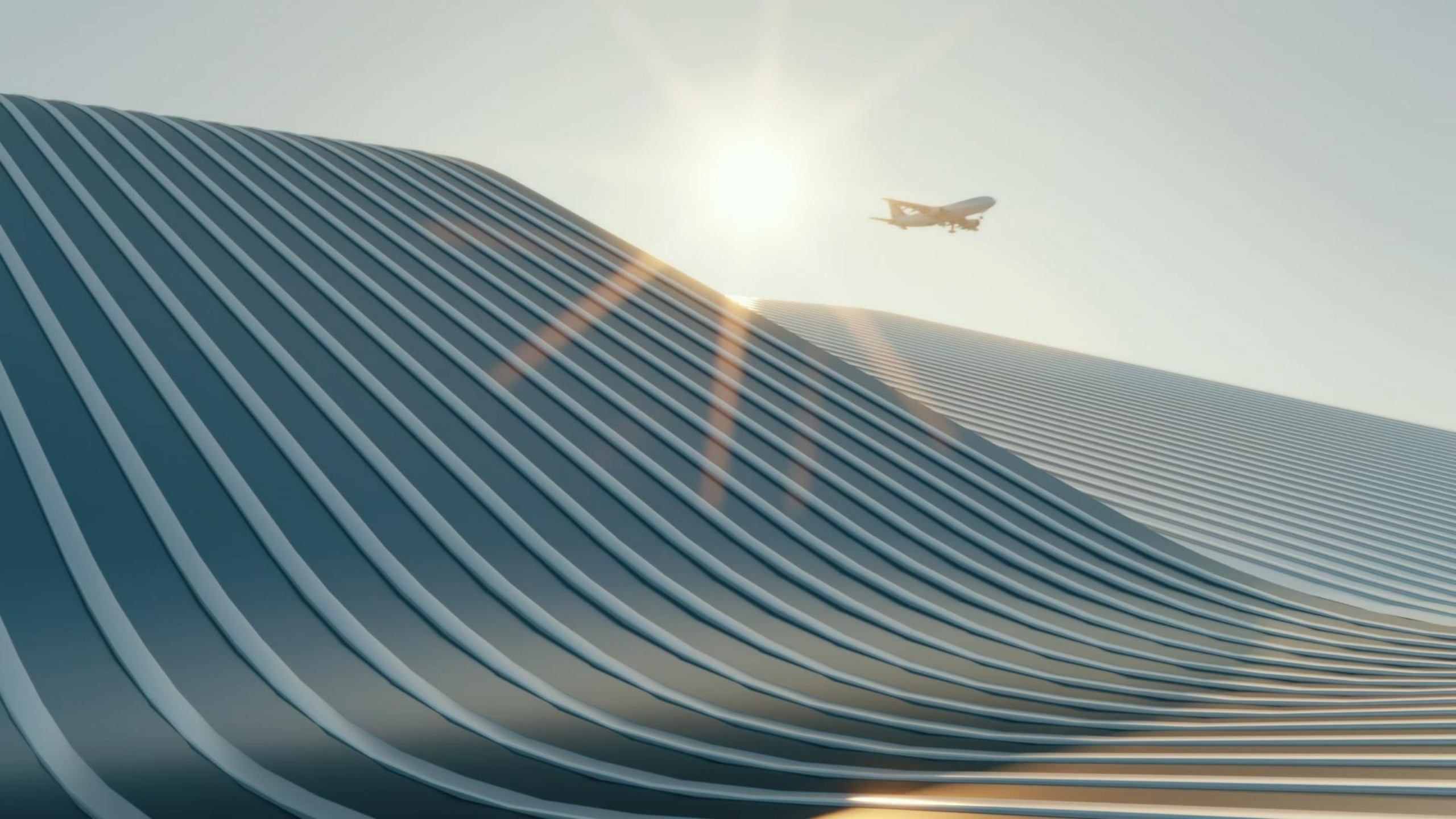




# Pittsburgh International Airport's Midfield – October 1, 1992











**Paul L. Hoback Jr.**  
**Chief Development Officer**  
**412-472-3532**  
**[phoback@flypittsburgh.com](mailto:phoback@flypittsburgh.com)**

