

Construction Services Subcommittee Meeting

Scott H. Schaeffer, PSP PMP- Chair

Derek Rogers (West), Tony Dougherty PE (East), and Tim Farney PE (Central) - Vice Chairs

Agenda

- 2016 Year in Review
- Construction Inspection Wage Rates
- Weekly Consultant Mileage and Hour Logs (CMH)
- Unemployment Compensation
- Workforce Development
- Wage Rate Approval Process
- PennDOT Winter Schools

Construction Services Subcommittee Meeting

Agenda (con't)

- AVL/GPS - Inspector Tracking
- Compensation for Project Management Time
- Additional Issues
- Subcommittee Meeting Schedule
- Open Discussion

2016 Year in Review

- 60 CM/CI agreements were advertised since Jan 1, 2016.
- 58 CM/CI agreements that have been executed since Jan 1, 2016.

Inspection Wage Rates

Increase effective October 1, 2016

Classification	Old Rate	10/1/2016 Rate	% Increase
TA-1	16.27	16.78	3.13
TA-2	19.14	19.74	3.13
TCI-1	22.61	23.45	3.72
TCI-2	23.69	24.55	3.63
TCI-3	24.76	25.63	3.51
TCIS-1	27.01	27.98	3.59
TCIS-2	28.22	29.30	3.83
TCM-1	30.38	31.29	3.00
TCM-2	34.66	35.70	3.00
CI-1	22.60	23.99	6.15
CI-2	31.51	32.69	3.74

Inspection Wage Rates

Future Increases

- July 1, 2017 – 2.0%
- July 1, 2018 and 2019 – 2.5%
- Verbal Approval
- Strike-off Letter forthcoming
- Use these numbers to calculate escalation in Price Proposals

Weekly Consultant Mileage and Hour Logs (CMH)

- Challenges with District preferences
 - Q/A available in ECMS
 - Please bring District concerns to ACEC to summarize and send to Contract Management
- Current electronic signature process:
 - PDF Uploads
 - PennDOT buy-in
 - Paper still allowable
 - Electronic Initiative moved up on the mandatory priority list
 - Mandatory electronic date set – May 2017

Weekly Consultant Mileage and Hour Logs (CMH) (con't)

- Inspector fills out CMH Log form and scans form to PDF
- Portal in ECMS and Log Form is uploaded
- Consultants can check Log Form before the Form is loaded in ECMS
- The work flow to get approval remains inspector will submit, consultant firm will approve and then PennDOT approves

Weekly Consultant Mileage and Hour Logs (CMH) (con't)

CMH Log iPad App

Consultant Inspector Hours and Mileage Log						Agreement No-E03563		Part/WO#-1		Construction ECMS#-0234	
Working Period		Inspector Name		Reporting/Project location		970 WB Twp, Blvd, Wilkes-Barre, Pa					
Start Date	10/23/2016	Home Address		Vehicle Description		2007 Toyota FJ Cruiser RR 72W0					
End Date	10/29/2016	Mileage Rate	0.54	Mileage Home to Assigned Reporting Location (Shortest route)	27	(Year, Make, Model, License Plate #)					

Time Period		Hours		Destination		Odometer Reading		Billable Miles	Status	Toll If Yes	Field Location / Assignment / Remarks
Date	Begin Work	End work	Straight	OT	From	To	Start				
Sun 10/23/2016											
Mon 10/24/2016	06:30 AM	03:00 PM	8.00	0.00	130 Grandview Dr, Tunkhannock, PA	970 WB Twp, Blvd, Wilkes-Barre, Pa	116904	116932	12	Commute	2007 Toyota FJ Cruiser RR 72W0; S-34633, SVCC office
					Office	CJM	116904	116924	20	CJM	
					970 WB Twp, Blvd, Wilkes-Barre, Pa	130 Grandview Dr, Tunkhannock, PA	116924	116952	12	Commute	
Tue 10/25/2016	07:00 AM	04:30 PM	9.00	0.00	130 Grandview Dr, Tunkhannock, PA	970 WB Twp, Blvd, Wilkes-Barre, Pa	116952	116989	12	Commute	2007 Toyota FJ Cruiser RR 72W0; S-34633, SVCC office
					Office	CJM	116959	117034	35	CJM	
					970 WB Twp, Blvd, Wilkes-Barre, Pa	130 Grandview Dr, Tunkhannock, PA	117034	117052	12	Commute	
Wed 10/26/2016											
Thu 10/27/2016											
Fri 10/28/2016											
Sat 10/29/2016											
			Straight	OT				Total Billable CJM Miles ¹		55.0	
Total Hours			17.00	0.00				Total Billable Commute Miles ²		48.0	
									Total Billable Miles ³	103.0	

I hereby certify that the information above is correct and that the mileage has been used only in the fulfillment of my duties for the Commonwealth of Pennsylvania.

Received by Department and checked for completeness:

Inspector's Name Printed: _____
 Inspector's Signature: _____ Date: _____
 Supervisor's Name Printed: _____
 Supervisor's Signature: _____ Date: _____
 Inspector's Firm: _____

Dept. Representative's Name Printed: _____
 Dept. Representative's Signature: _____ Date: _____
 Notes:

- 1) Billable On-the-Job-Miles (CJM or Field Miles): (Should not include miles solely travelled to and from lunch)
- 2) Billable Commute Miles: (Shortest distance from home to project site minus 15 miles in each direction (or a total of 30 non-billable commute miles) up to a total of 150 billable miles daily (up to 75 miles each way).
- 3) If Lodging is utilized in lieu of commuting, enter the odometer reading but enter zero miles for the day in Billable Commute Miles block. Expenses documented separately.

Weekly Consultant Mileage and Hour Logs (CMH) (con't)

CMH LOG ISSUES

- “Wet” Signatures still being required by some IICs
- HOP / Maintenance / Locally Sponsored agreements can't use the electronic CMH Logs
- Prime Consultants can't see subconsultant CMH Logs

Weekly Consultant Mileage and Hour Logs (CMH) (con't)

LONG TERM SOLUTION

- Longer process and additional meetings will be held with PennDOT
- Consultant Community will part of the process
- PennDOT is looking to have the form inputted in ECMS similar to filling out a PSA
- PennDOT is trying to have fields with pull down menu's and fields calculated as much as possible

Weekly Consultant Mileage and Hour Logs (CMH) (con't)

LONG TERM SOLUTION (con't)

- Very complicated with a bunch of “what if” scenarios
- Once form is filled out the form would go to the consultants and then to PennDOT similar to the current log
- This form will help generate the invoice in ECMS
- Implementation in 2017

Unemployment Compensation

- Act 60 – 49.5% of wages outside of highest quarter
- Amendment A10637 was added to House Bill 319
- Amendment A10637 – 37% of wages outside of highest quarter
- Concurrence by the Senate on 10/16
- Signed into Law by the Governor on 11/3
- Estimated to help 47,000+
- Effective January 1, 2017
- Revenue Neutral
 - Employee less per week/Employer more

Workforce Development

- Ongoing Work Group Meetings
- Push for TA's (What are firms seeing?)
- TA's discussed with CO
- Initiative to work with colleges and adult learning centers (CCAC, Penn Tech, HACC, CCCTC, ICTC, etc.)
- Push for greater consultant attendance at Winter Schools
- Consistency of Winter School topics
- Need for greater ACEC participation
- PennDOT Approach
- TQI

Workforce Development

RETIREMENT SURVEY

- Twenty-six firms that responded to the Inspection Workforce Retirement Survey.
- The purpose of this survey was to gather data on the current status of our inspection workforce and the impact retirement will have within the next four years in order to determine the needs to continue, develop and replace the retiring workforce.
- Survey Results

TRANSPORTATION CONSTRUCTION INSPECTORS (INCLUDES ALL TCM, TCIS, TCI and TA CLASSIFICATIONS)

- In year 1 (Dec 2017), 12.7% (96 employees) are eligible to retire
- In year 3, (Dec 2019), 35.0% (264 employees) are eligible to retire
- In year 4, (Dec 2020), 54.2% (409 employees) are eligible to retire
-

Workforce Development

RETIREMENT SURVEY (con't)

COATINGS INSPECTORS (ALL CI CLASSIFICATIONS)

- In year 1 (Dec 2017), 28.9% (15 employees) are eligible to retire
- In year 3 (Dec 2019), 57.7% (30 employees) are eligible to retire
- In year 4 (Dec 2020), 69.2% (36 employees) are eligible to retire

COMBINED TRANSPORTATION AND COATINGS INSPECTION

- In year 1 (Dec 2017), 13.8% (111 employees) are eligible to retire
- In year 3 (Dec 2019), 36.4% (294 employees) are eligible to retire
- In year 4 (Dec 2020), 55.2% (445 employees) are eligible to retire

Wage Rate Approval Process Review

- CI resumes are reviewed by Central Office (Parent Approval)
- Parent approval gets nominated for specific agreement(s) and is then approved by the prime and District
- Firm includes substitution information in the comment box when nominating
- Agreement number and substitution areas were removed from resume template

PennDOT Winter School

- Industry Day (PennDOT, Consultants and Contractors)
- ACEC's Role in Winter Schools
- Topics for discussion
 - Environmental Training
 - Safety
 - Lessons Learned
 - District Overviews of upcoming work
 - Breakout Sessions
 - Spec Changes

AVL/GPS - Inspector Tracking

- District 6-0 only to date
- Numerous meeting held with PennDOT to discuss the use of GPS and data being generated
- Use of AVL/GPS will go State-wide (date unknown)
- Still seeing marginal accuracy of the technology
- PennDOT has confirmed odometers govern
- Working with PennDOT to create an acceptable tolerance

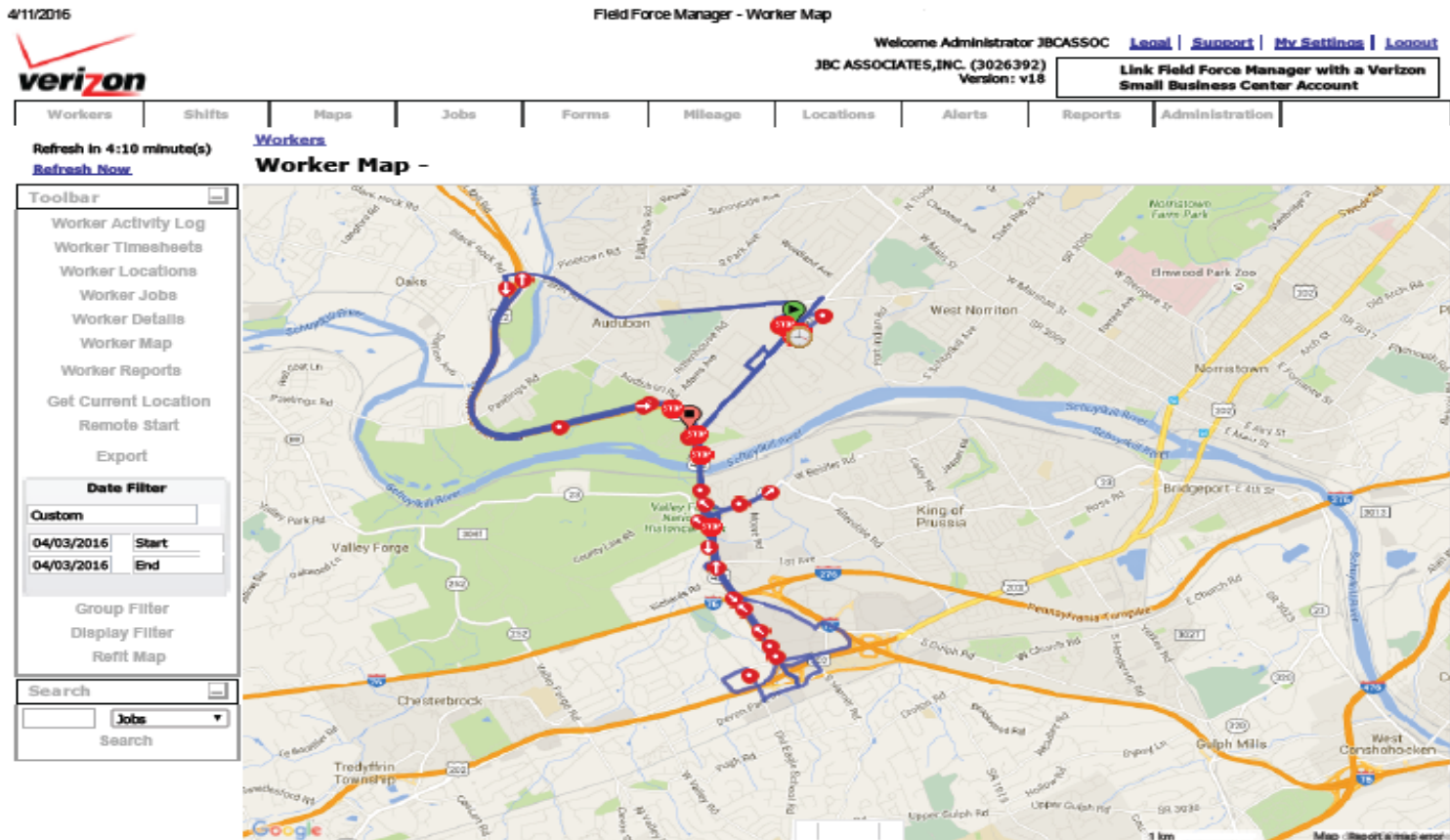
AVL/GPS - Inspector Tracking (con't)

- Meeting with GPS Application Tech Reps
- Need to test in rural areas of the State
- Will not be added to existing Agreements
- Audit protection
- Discrepancy Log
- What are alternative options to guarantee no fraud?

AVL/GPS - Inspector Tracking (con't)

Type of reports generated

1) “Breadcrumb – Worker Map”



acec/pa

AVL/GPS - Inspector Tracking (con't)

Type of reports generated

2) Detailed Daily Time / Mileage

Timesheet Detail with Breaks

Run By: Administrator JBCASSOC (Group: Administrative)
Run At: 4/12/16 1:31 PM
Time Period: 4/3/16 12:00 AM to 4/9/16 11:59 PM
Groups: SR 0422-SRB E03565-02

Shift Start	Break Start	Break End	Shift End	Break Hours	Pay Hours	GPS Distance
<i>Worker: Rauchfuss, Karl</i>						
4/3/16 5:51 PM	--	--	4/4/16 5:58 AM		12:07	42.7 mi
4/4/16 5:48 PM	--	--	4/5/16 7:05 AM		13:17	32.8 mi
4/5/16 6:19 PM	--	--	4/6/16 5:00 AM		10:41	27.2 mi
4/6/16 5:56 PM	--	--	4/7/16 5:17 AM		11:21	21.7 mi
4/7/16 5:52 PM	--	--	4/8/16 12:49 AM		6:57	42.1 mi

Sum: Sum: 54:23 Sum: 166.5 mi
Avg: Avg: 10:52 Avg: 33.3 mi

AVL/GPS - Inspector Tracking (con't)

EXAMPLE OF DATA

Day	Date	Location From	Location To	Odometer Reading	Odometer Reading	Miles	Comments	SPT	Temp	Delta (inches)	Delta (%)
Wednesday	8/21/2016	Home	SR 412 Office	177919	177930	11					
		SR 412 Office	Home	177930	177930	0					
						21					
Thursday	8/23/2016	Home	SR 412 Office	177930	177940	10					
		SR 412 Office	Home	177940	177940	0	Calvin's bus back	18.3	2	-1.7	-11.8%
		Highway 35	Highway 35	177945	177945	0					
		Lafayette St	Home	177941	177942	1	Drive through project	18.1	4	-1.9	-10.5%
						27					
Friday	8/26/2016	Home	Calvin's	177947	177949	2	Calvin's for car wash				
		Calvin's	SR 412 Office	177949	177951	2					
		SR 412 Office	Calvin's Office	177951	177951	0					
		Calvin's Office	SR 412 Office	177950	177949	1	Drive through project				
		SR 412 Office	Home	177949	177949	0					
						30					
						30					
Saturday	8/28/2016	Home	SR 412 Office	177949	177950	1					
		SR 412 Office	Home	177950	177950	0					
						20					
Sunday	8/28/2016	Home	SR 412 Office	177950	177950	0					
		SR 412 Office	Home	177950	177950	0					
						24					
						24					
Monday	8/28/2016	Home	Calvin's	177951	177951	0					
		Calvin's	Home	177951	177950	1					
		Home	Calvin's	177950	177950	0					
		Calvin's	Calvin's	177949	177949	0					
		Calvin's	Calvin's	177950	177951	1	Highway work				
		Home	Calvin's	177951	177951	0					
		Calvin's	Home	177950	177950	0					
						30					
Tuesday	8/30/2016	Home	SR 412 Office	177952	177952	0					
		SR 412 Office	Lafayette St	177952	177952	0					
		Lafayette St	Calvin's Office	177952	177952	0					
		Calvin's Office	SR 412 Office	177952	177951	1					
		SR 412 Office	Calvin's	177951	177951	0					
		Calvin's	SR 412 Office	177951	177951	0					
		SR 412 Office	Home	177950	177950	0					
						30					
						30					
Wednesday	8/31/2016	NA	NA				Change	34.2	7	-1.8	-10.0%
Thursday	9/01/2016	Home	Lafayette St	177952	177953	1					
		Lafayette St	SR 412 Office	177953	177953	0					
		SR 412 Office	Calvin's	177953	177953	0	Drive through MSP & SR 412				
		SR 412 Office	Calvin's	177953	177953	0	And return				
		SR 412 Office	Calvin's	177953	177953	0	And return				
		SR 412 Office	Home	177953	177953	0					
		Home	Highway	177953	177954	1	And return	34.5	8	-1.5	-12.1%
						21					
Friday	9/02/2016	Home	SR 412 Office	177954	177955	1					
		SR 412 Office	Home	177955	177955	0					
						21					
Saturday	9/03/2016	Home	SR 412 Office	177955	177956	1					
		SR 412 Office	Calvin's	177956	177956	0	And return				
		SR 412 Office	Calvin's	177956	177955	1	And return				
		SR 412 Office	Calvin's	177956	177955	1	And return				
		SR 412 Office	Home	177955	177955	0					
						20					
						20					
Tuesday	9/04/2016	Home	SR 412 Office	177956	177957	1					
		SR 412 Office	Calvin's	177957	177957	0	And return				
		SR 412 Office	Home	177957	177957	0					
						21					
Wednesday	9/05/2016	Home	SR 412 Office	177957	177957	0					
		SR 412 Office	Calvin's	177957	177957	0	Go to Lafayette St. to SR 412 Office				
		SR 412 Office	Lafayette St	177959	177960	1					
		Lafayette St	Home	177960	177961	1					
						20					
						20					
Thursday	9/08/2016	Home	Lafayette St	177961	177963	2					
		Lafayette St	SR 412 Office	177963	177963	0					
		SR 412 Office	Highway 35	177963	177962	1					
		SR 412 Office	Home	177962	177960	2					
						23					
						23					
						23					
						23					
						23					
						23					
						23					
						23					
						23					
						23					
						23					
						23					
						23					
						23					
						23					
						23					
						23					
						23					
						23					
						23					
						23					
						23					
						23					
						23					
						23					
						23					
						23					
						23					
						23					
						23					
						23					
						23					
						23					
						23					
						23					
						23					
						23					
						23					
						23					
						23					
						23					
						23					
						23					
						23					
						23					
						23					

Year	Trips	Delta (miles)	Delta (%)
18.3	2	-1.7	-11.8%
35.0	4	-3.9	-35.5%
31	5	-5	-11.8%
35.5	2	-1.6	-3.0%
31.4	2	-3.5	-35.5%
42.8	7	-3.2	-14.5%
34.2	7	-3.8	-35.5%
34.3	6	-3.3	-31.1%
25.1	2	-5.9	-4.1%
29.8	3	-4.0	-18.0%
21.1	3	-3.9	-15.6%
41.2	6	-3.8	-11.1%
43.8	8	-4.6	-16.2%

Compensation for PM Time on CI Agreements

- Topic broached at PennDOT/ACEC Task Force Meetings
- ACEC recommended up to 5% of CI Agreement hours for PM time
- PennDOT stated they will review the PM time
- Issue still open

Additional Issues

- Seeing numerous recent instances of short notice for layoffs (less than the two weeks noted in the Agreements).
- In some cases, PennDOT is asking consultant inspectors to work or be available on a part-time basis for several weeks after full-time work ends. This is problematic for three reasons:
 - a. It can affect the employee's eligibility for employee benefits with their firm (medical, dental, vision, etc.), as part-time work may disqualify the employee from these benefits

Additional Issues (Con't)

- b. It may affect the employee's unemployment compensation eligibility
- c. It is not permitted via the Agreements which require 37.5 hours week

Subcommittee Meeting Schedule

- March 2017
- June 2017
- September 2017
- November (2017 – Hershey)

Open Discussion

