



NCDOT Construction Update - ACEC

Troy B. Brooks, PE – State Construction Engineer

5/19/2026

Connecting people, products and places safely and efficiently with customer focus, accountability and environmental sensitivity to enhance the economy and vitality of North Carolina

State of Construction

Active Construction Contracts

914 Active Construction Contracts

- 363 Centrally let contracts (greater than \$5M or specialty contract)
- 551 Division let contracts (less than \$5M)

Total Value of Active Contracts: \$16.18B

- \$15.06B Centrally Let Projects
- 1.12B Division Let Projects

FY 2025 Payments: \$3.04B

FY 2026 Payments (to date): \$3.29B





401 Let Construction Contracts in FY 26 (to date)

- 106 Centrally let contracts (greater than \$5M or specialty contract)
- 295 Division let contracts (less than \$5M)

Total Value of Let Contracts: \$2.02B (to date)

- \$1.47B Centrally Let Projects
- \$0.55B Division Let Projects

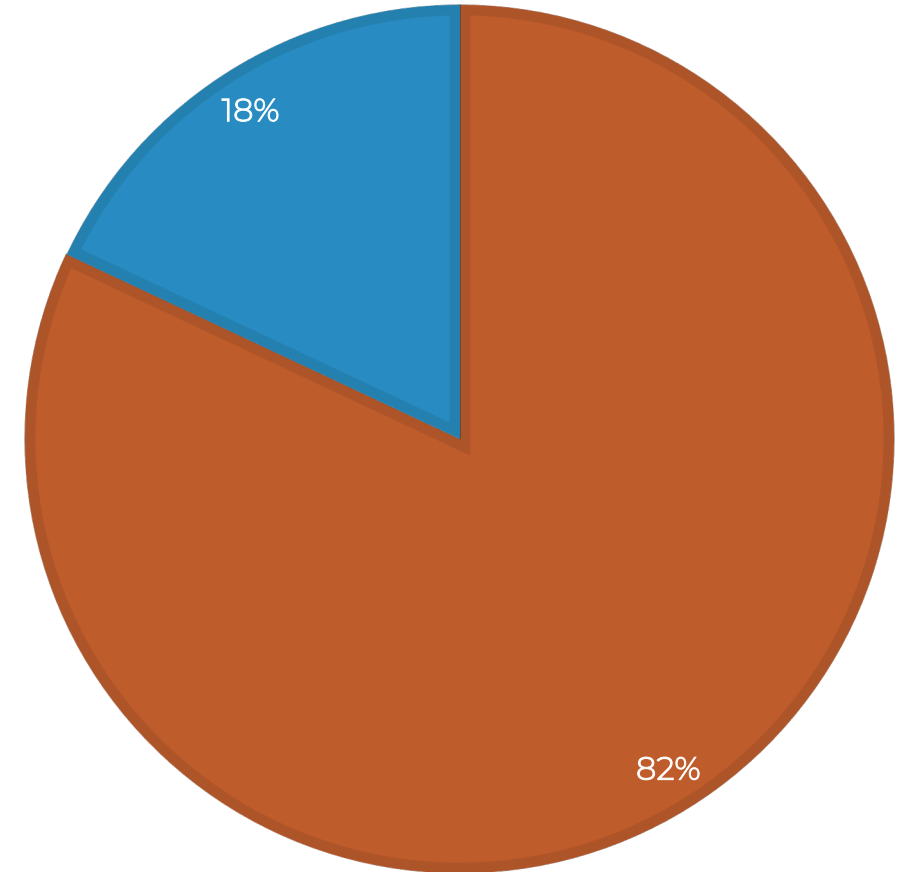
Consultant Utilization in Construction

2023 Statewide On-Call LSC (CEI)

- 28 Limited-Service contracts (LSC)
- 56 Consultant Firms (Primes & Subs)
- Current Authorized Amount = \$678.5M
- Current Obligated Amount = \$556.4M
- **COMING: 2026 On-Call Advertisement JUNE 2026**

2023 STATEWIDE ON-CALL CEI SERVICES LSC

■ Sum of Amount Obligated ■ Sum of Total Remaining Contract Authority

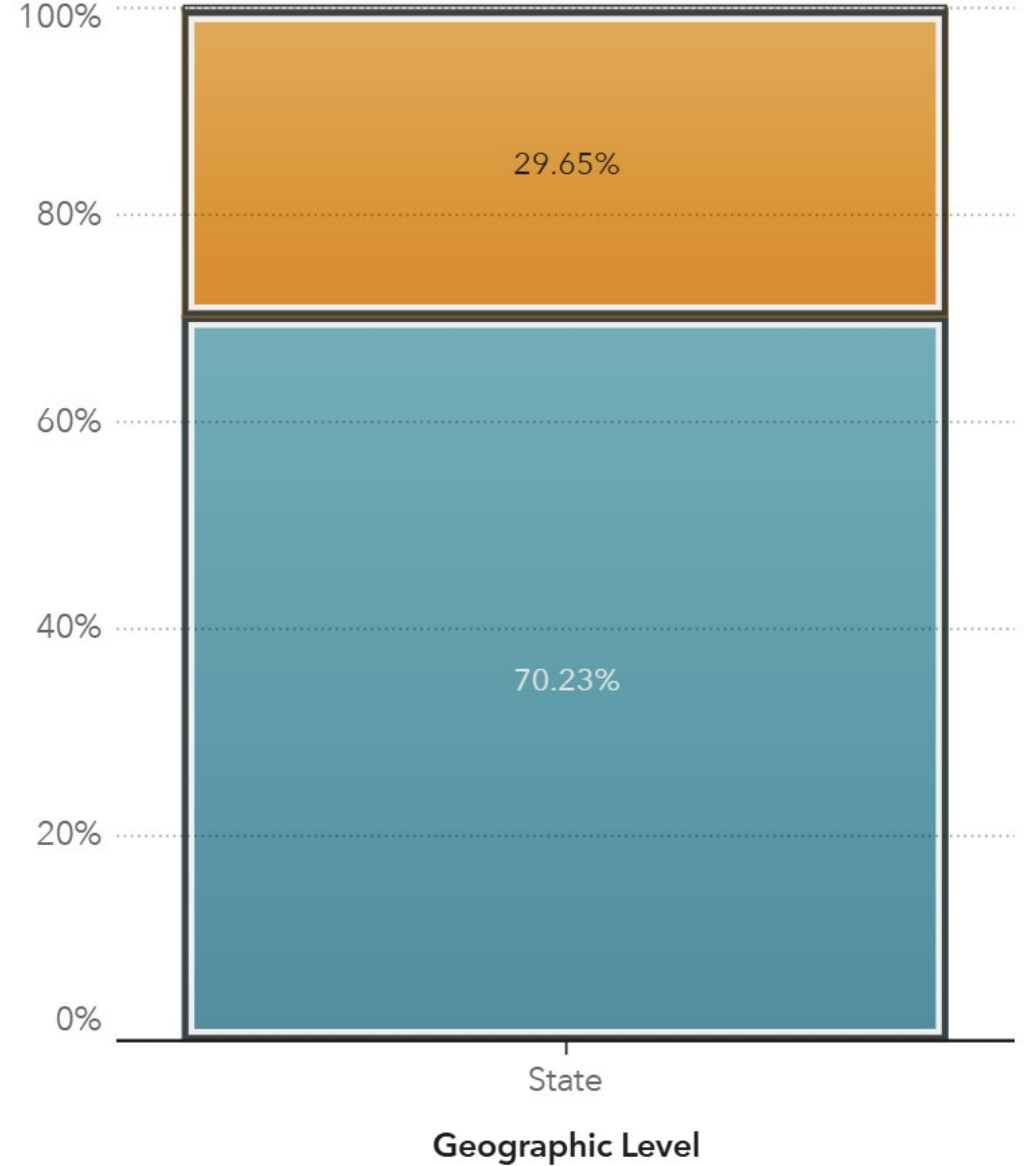


Current Construction Workforce % Outsourced

As of Jan 2026:

- 70.2% Consultants Statewide
- Technicians - 75.7% Consultants
- Engineers – 30.5% Consultants
- 1,163 CEI statewide

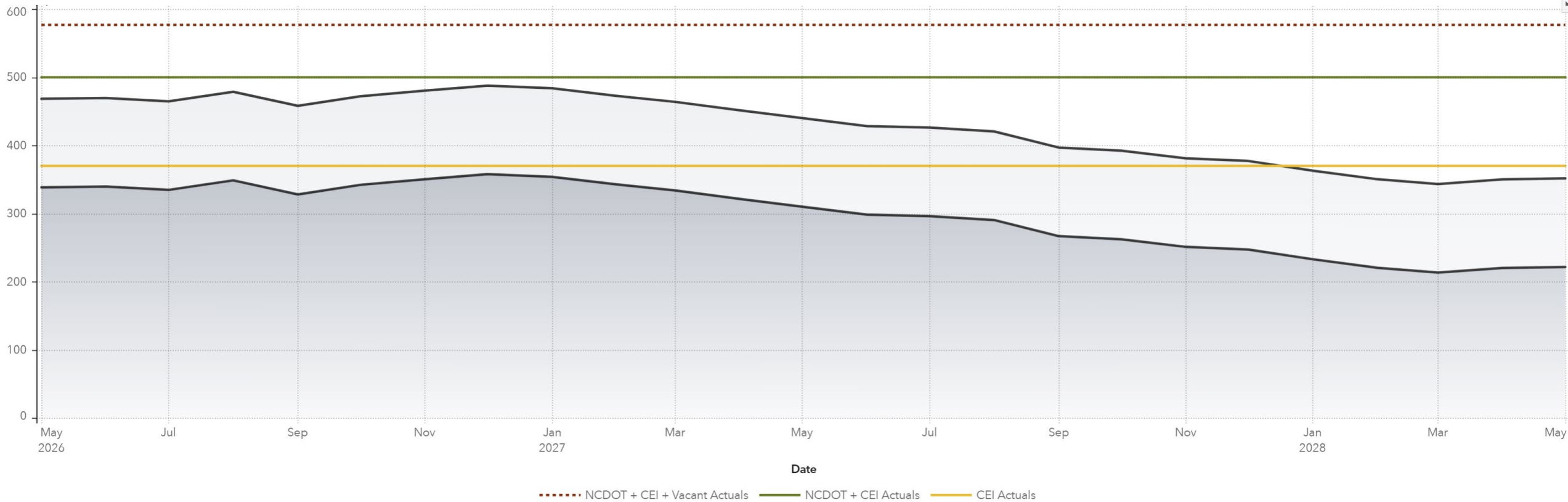
■ Total CEI Usage
■ Filled Positions



CEI Workforce Projections

Workforce Outlook – Coastal Divisions (Div 1-4,6)

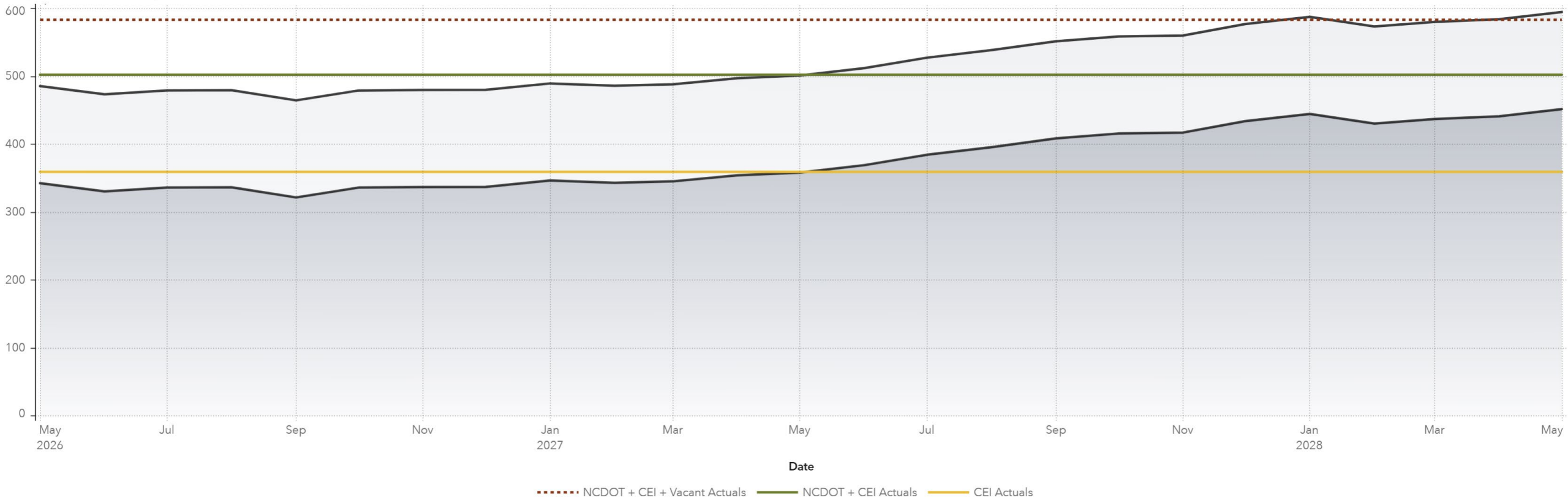
Projected vs Actual Inspectors



Note: The top black line represents Total Projected Inspectors per month and the second black line represents the CEI Projected need per month

Workforce Outlook – Piedmont Divisions (Div 5, 7-10)

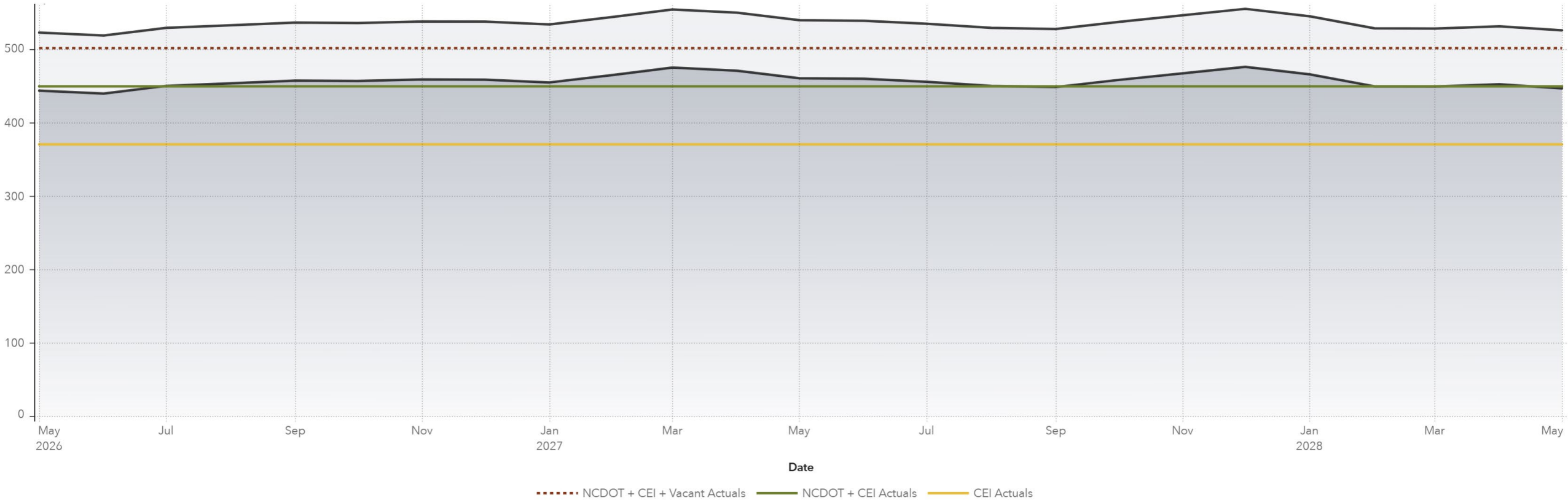
Projected vs Actual Inspectors



Note: The top black line represents Total Projected Inspectors per month and the second black line represents the CEI Projected need per month

Workforce Outlook – Western Divisions (Div 11-14)

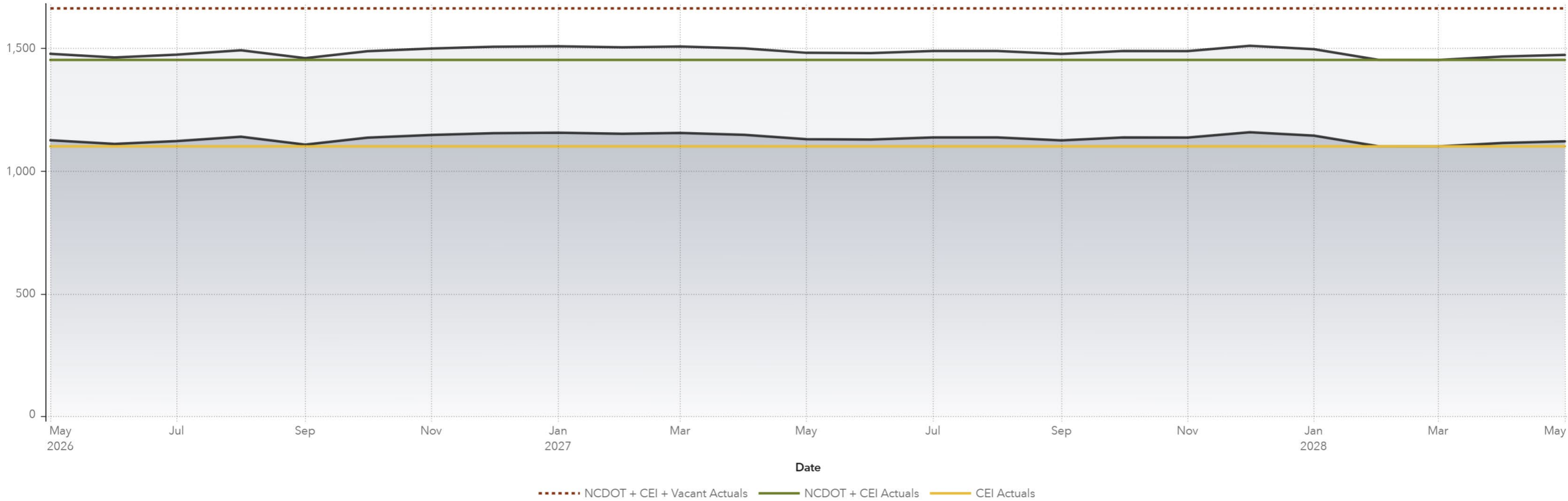
Projected vs Actual Inspectors



Note: The top black line represents Total Projected Inspectors per month and the second black line represents the CEI Projected need per month

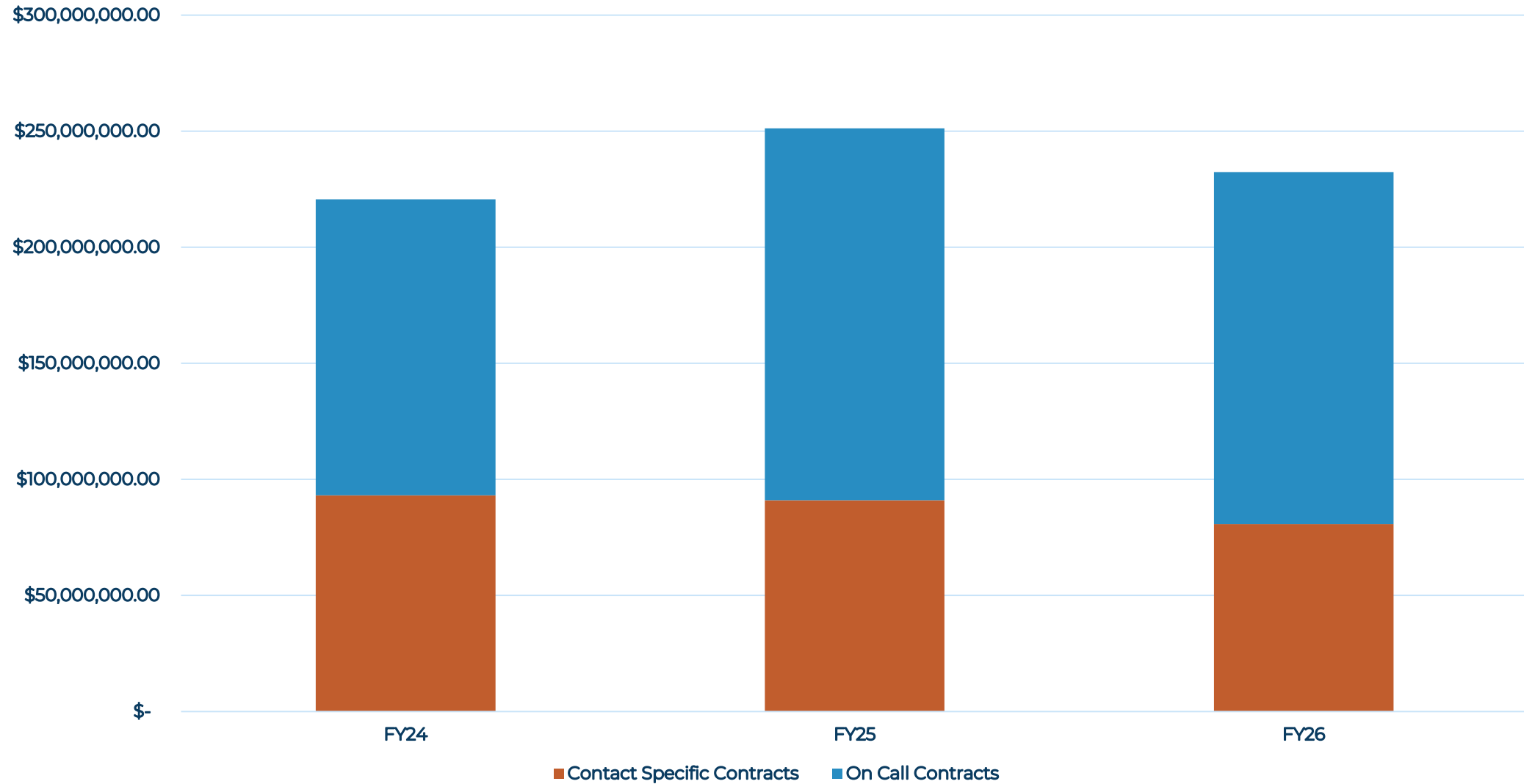
Workforce Outlook – Statewide Projections

Projected vs Actual Inspectors



Note: The top black line represents Total Projected Inspectors per month and the second black line represents the CEI Projected need per month

Construction CEI Expenditures



CEI Opportunities in Construction

Advertisement Next 12 Months :

- Statewide On-Call Construction Engineering Inspection Services (June 2026)
- HB-0001A – US-64 Broadband and ITS Installation from I-95 Interchange to NC-12, Div 1 (June 2026)
- R-5759 – NC 115 from US 421 to 2nd Street, Div 11 (August 2026)
- HL-0007 – NC 55 at SR 1191 (Technology Drive) in Apex, NC, Div 5 (January 2027)
- P-5717 – Norfolk Southern Line Crossing at SR 1121 (Cornwallis Road) – Div 5 (December 2026)
- I-5701/I-5703 – I-40/US 64 From I-440/US 1/US 64 to SR 1370 (Lake Wheeler Road), Div 5 (December 2026)
- U-4700A/B-4450 – US 321 from US 70 to US 321A, Div 12 (April 2027)
- HL-0006 – US 401, SR 1393 (Hilltop-Needmore Road Intersection), Div 5 (June 2027)



Current Initiatives

CEI Contract Administration Guidelines

Under Review

- NCDOT is updating the guidelines
- Last major update was October 2023
- Changes to include:
 - Updating processes to current procedures
 - Streamlining Administration Section
 - Updating based on comments from NCDOT staff and Industry
- New Guidelines will be released 3rd quarter 2026 after final NCDOT and Industry review



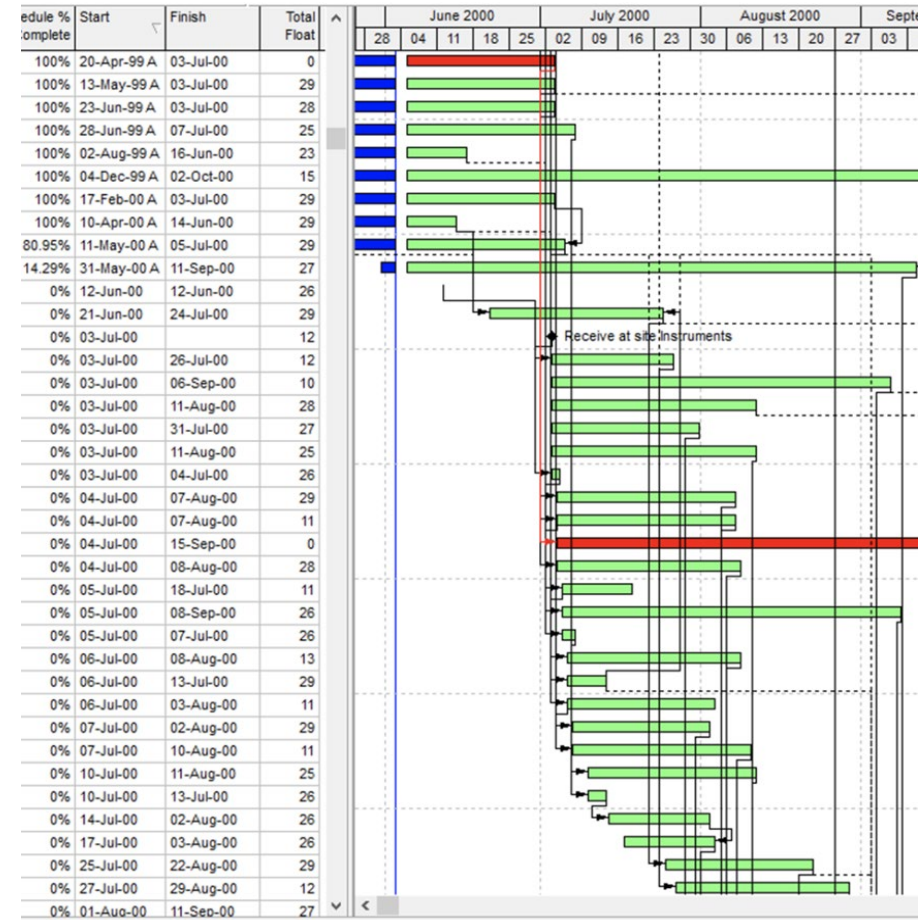
**Construction Engineering
& Inspection**

**Contract Administration
Guidelines**

Critical Path Method (CPM) Schedule Provision

- Updated CPM Schedule Provision is being incorporated into Alternative Delivery Projects beginning this year.
- Provision was developed with input from AGC and industry partners.
- Tool for managing and administering large-scale, complex construction projects.
- Currently evaluating for potential implementation on select Bid-Build projects.

**PLAN
YOUR WORK
AND
WORK
YOUR PLAN**



Work Zone Inspector Certification

- Safety is one of the core values which guides NCDOT in its everyday decision-making.
- Work zones present some of the biggest risks in our industry.
- There is currently no formal training for work zone inspection.
- NCDOT partnered with ITRE to develop the Work Zone Inspection Certification program.
- Pilot courses are currently on-going with a target "go-live" of summer 2026.



Institute for Transportation Research and Education

Work Zone Certifications

The Institute for Transportation Research and Education (ITRE) offers two options for individuals seeking initial or renewal certification as a Qualified Work Zone Installer or a Qualified Work Zone Supervisor.

Work Zone Certification

Contact Us

Troy Brooks, PE

tbbrooks2@ncdot.gov

919-707-2400

 ncdot.gov

 [@NCDOT](https://twitter.com/NCDOT)

 [ncdotcom](https://www.instagram.com/ncdotcom)

 [NCDOTcommunications](https://www.youtube.com/NCDOTcommunications)

 [ncdotcom](https://www.soundcloud.com/ncdotcom)

 [@NCDOT](https://www.facebook.com/NCDOT)

 [NCDOT](https://www.linkedin.com/company/NCDOT)

 [NCDOTcommunications](https://discord.com/invite/NCDOTcommunications)

 [View All Channels](#)