



Jay Winford
2020-21 NAPA Chairman

**Asphalt Contractors
Association of
Florida**

11.June.2021



Who is Prairie Construction?



NATIONAL ASPHALT
PAVEMENT ASSOCIATION



LAFAYETTE



OPELOUSAS



LAKE
CHARLES

PRAIRIE OPELOUSAS, LA.

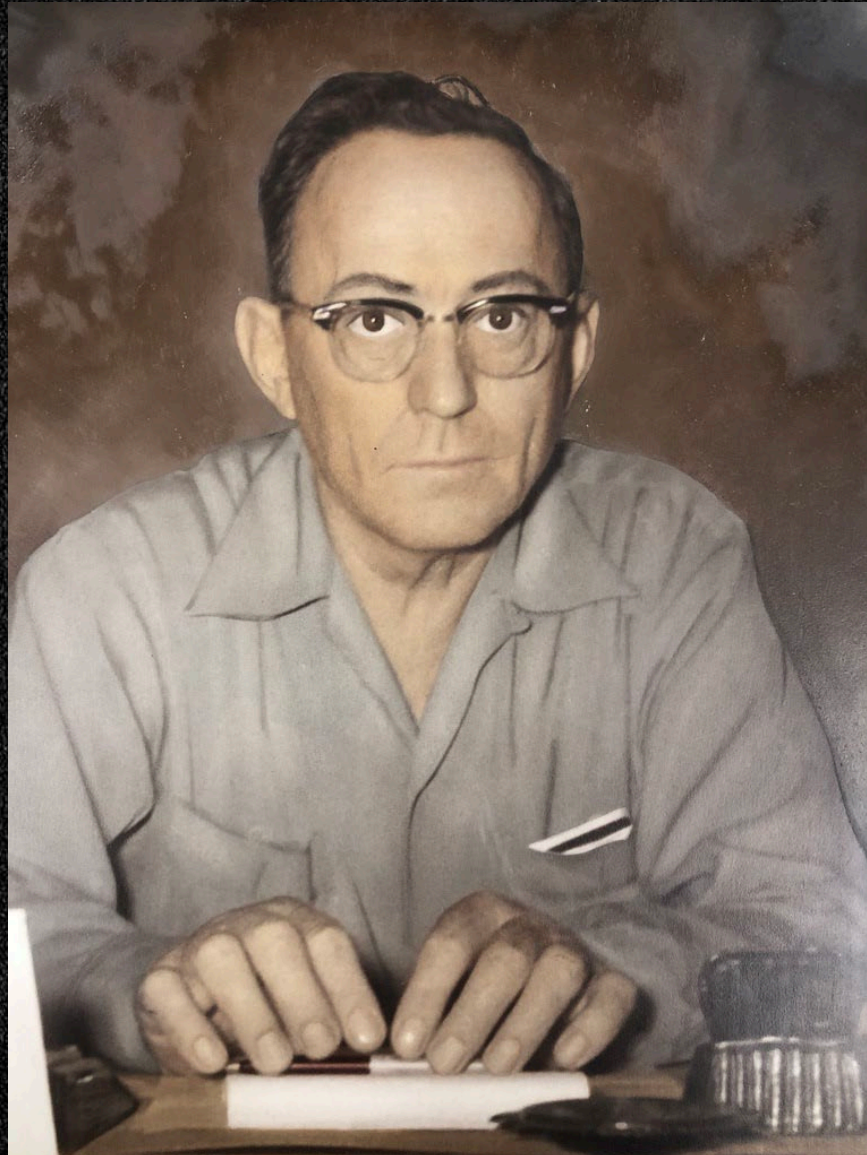


LEESVILLE



NEW IBERIA

L.M. (George) Winford — 1935



L. M. WINFORD
Road Contractor

ASPHALT PLANT — PHONE 2088
SAND AND GRAVEL — PHONE 354
OFFICES — PHONE 354

Sibley Road

Minden, Louisiana



NATIONAL ASPHALT
PAVEMENT ASSOCIATION

Jim Winford — 1939–1989



NATIONAL ASPHALT
PAVEMENT ASSOCIATION



Bossier City I-20 (1972)

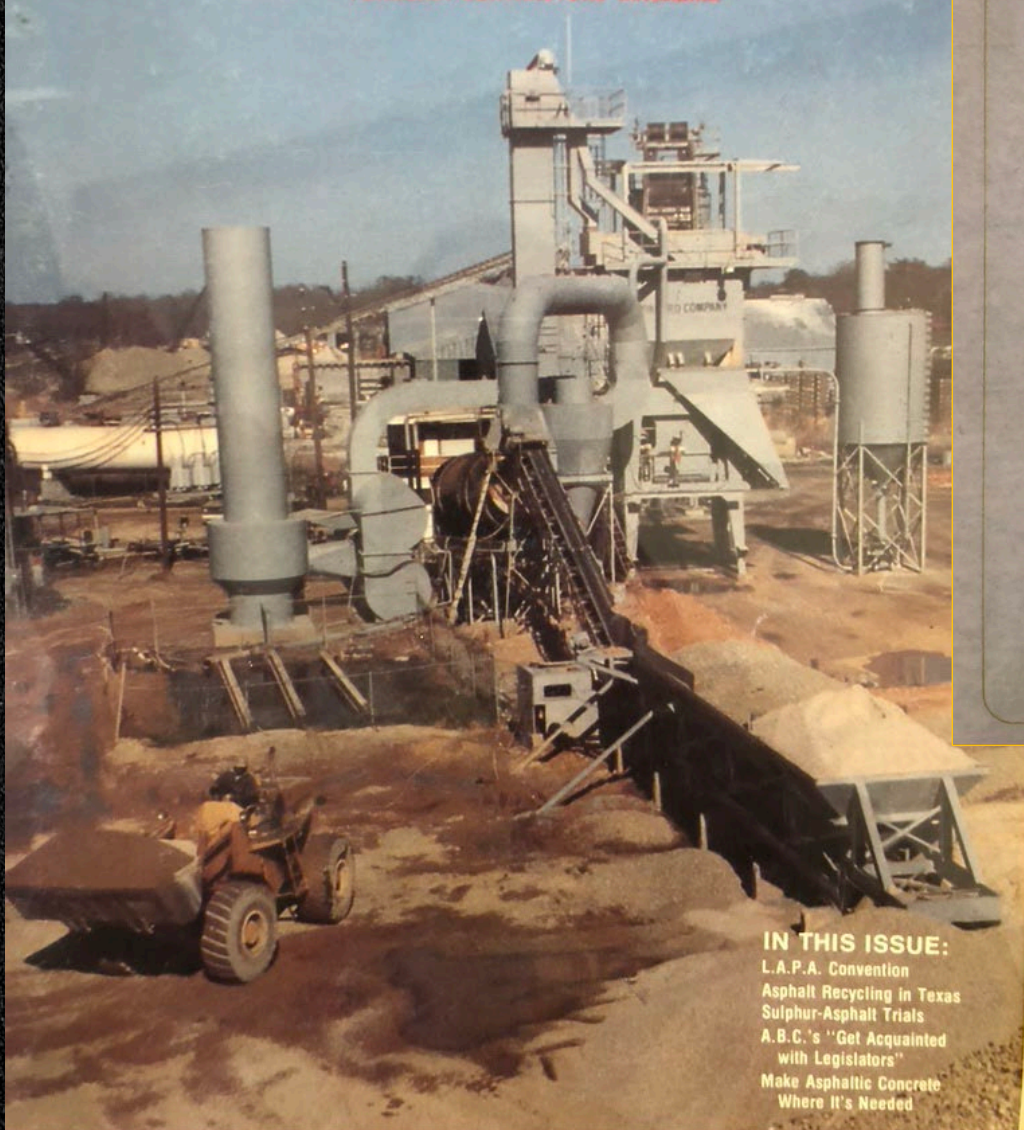


NATIONAL ASPHALT
PAVEMENT ASSOCIATION

Louisiana CONTRACTOR

FORMERLY CONTRACTORS MAGAZINE

APRIL, 1976



IN THIS ISSUE:

L.A.P.A. Convention
Asphalt Recycling in Texas
Sulphur-Asphalt Trials
A.B.C.'s "Get Acquainted
with Legislators"
Make Asphaltic Concrete
Where It's Needed

National Asphalt Pavement Association Distinguished Service Award

Presented To

James M. Winford

in recognition for his outstanding services
and devotion to the Association and to
the industry in the capacity of

Member, Board of Governors, 1974-1976

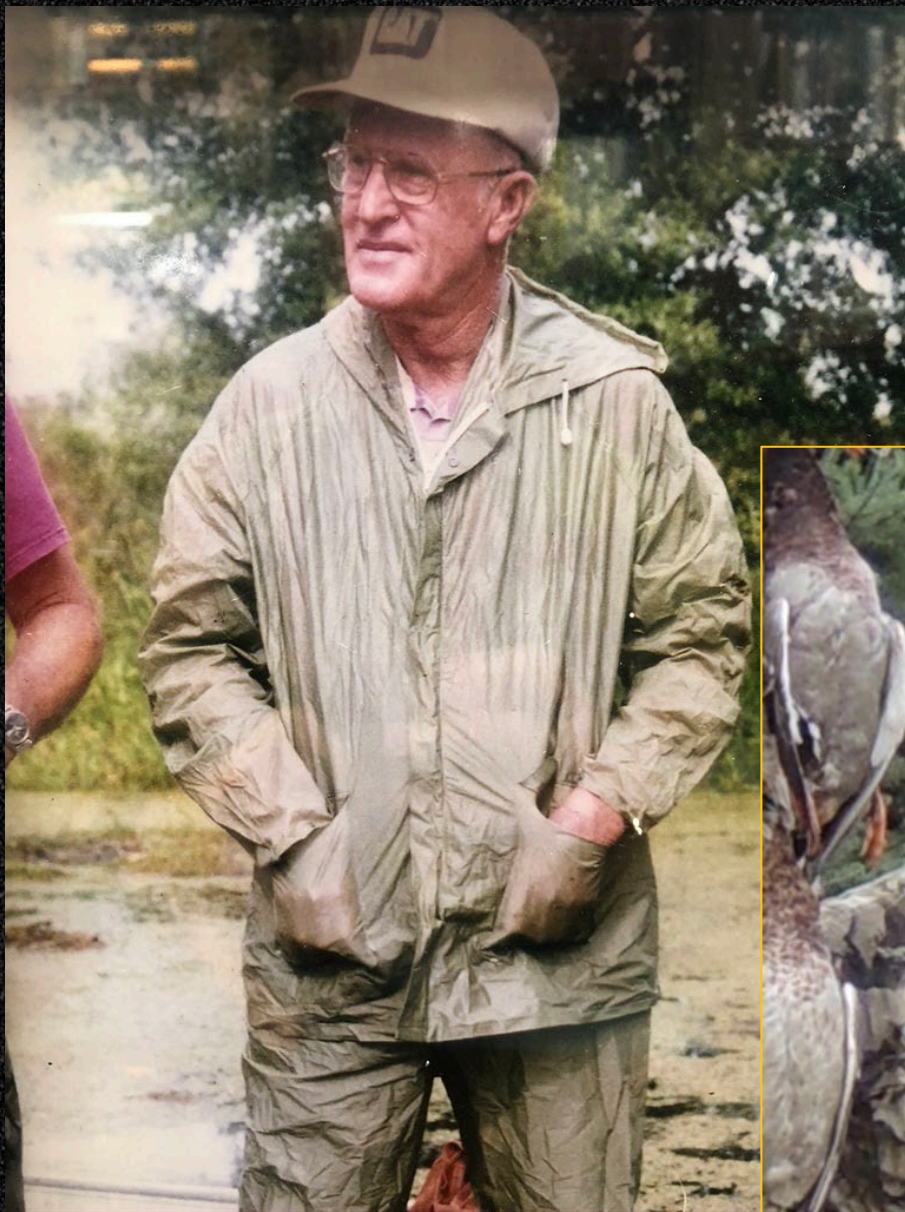
Presented by the Board of Directors

Charles J. Sielen
Chairman of the Board

John Fung
President



NATIONAL ASPHALT
PAVEMENT ASSOCIATION





James

Columbia • NYC •
Chicago Booth



Katherine

Tulane • New Orleans •
London • NYC





Laura



Cooking
Traveling
Reading

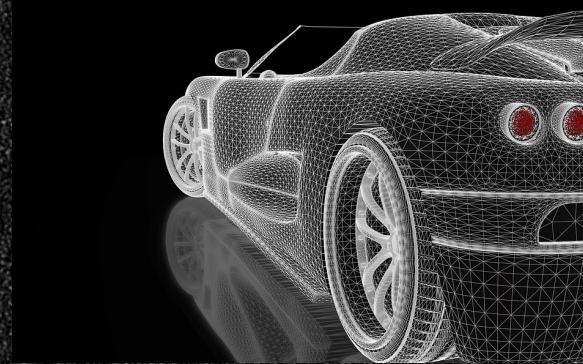


My “Extended” Family

NAPA's Strategic Plan



Grow & Protect Market Share



Engineering & Technology



Government Affairs



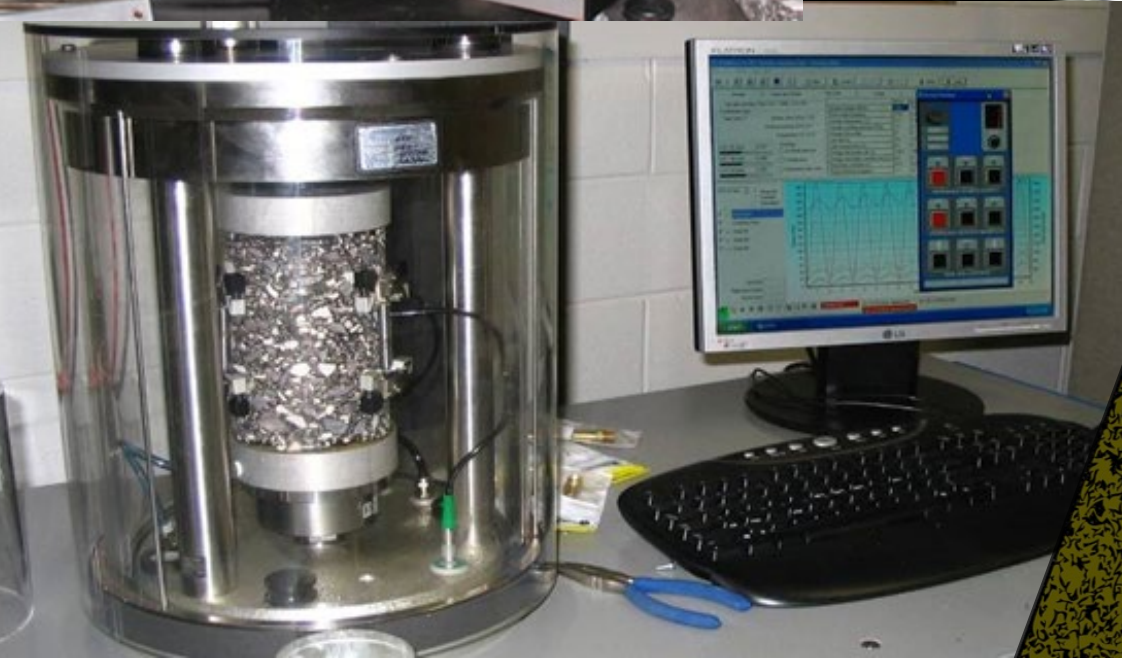
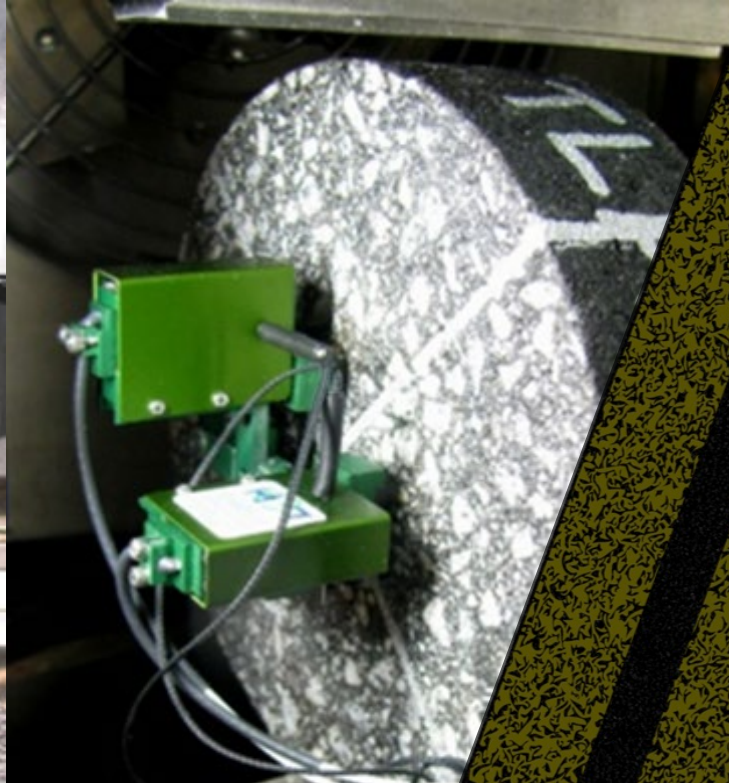
Environment, Health,
& Safety




Workforce Development



Membership, Meetings,
& Awards



2020 Focus: Engineering & Technology



**We design,
manufacture and
install the smoothest,
safest, fastest, quietest
and most recycled
perpetual pavement
system!**



**Who & What
We Are**

Problems? Industry Can Find Solutions



Aggregate Segregation

Information Series 134



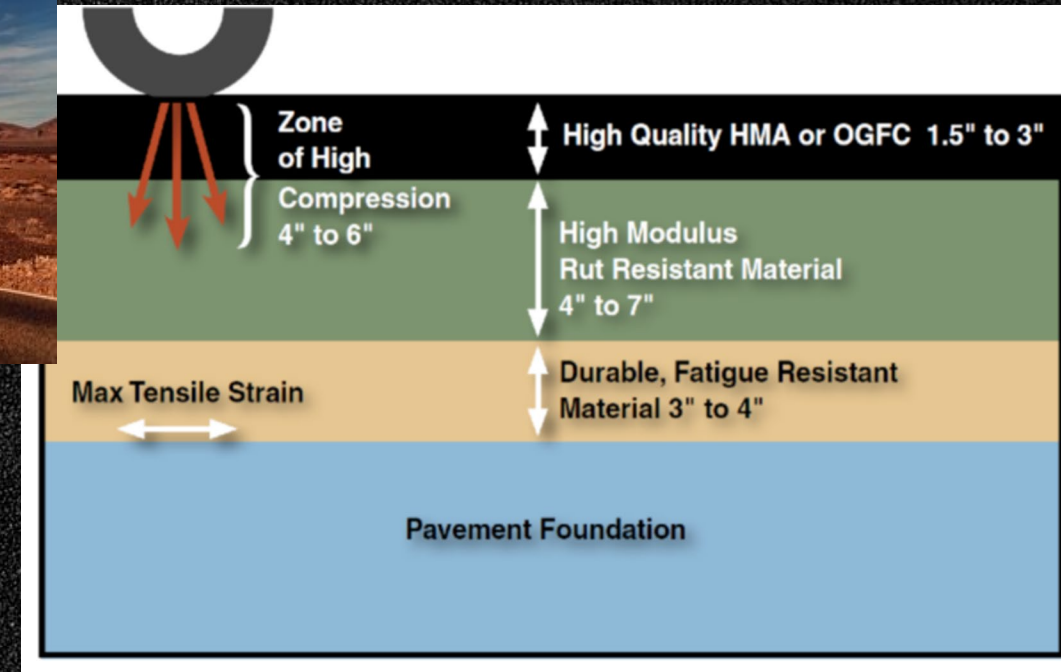
***Warm-Mix
Asphalt:
Contractors'
Experiences***

Pollution/Emissions/Silica

Problems? Industry Can Find Solutions



Modified Asphalt Binders

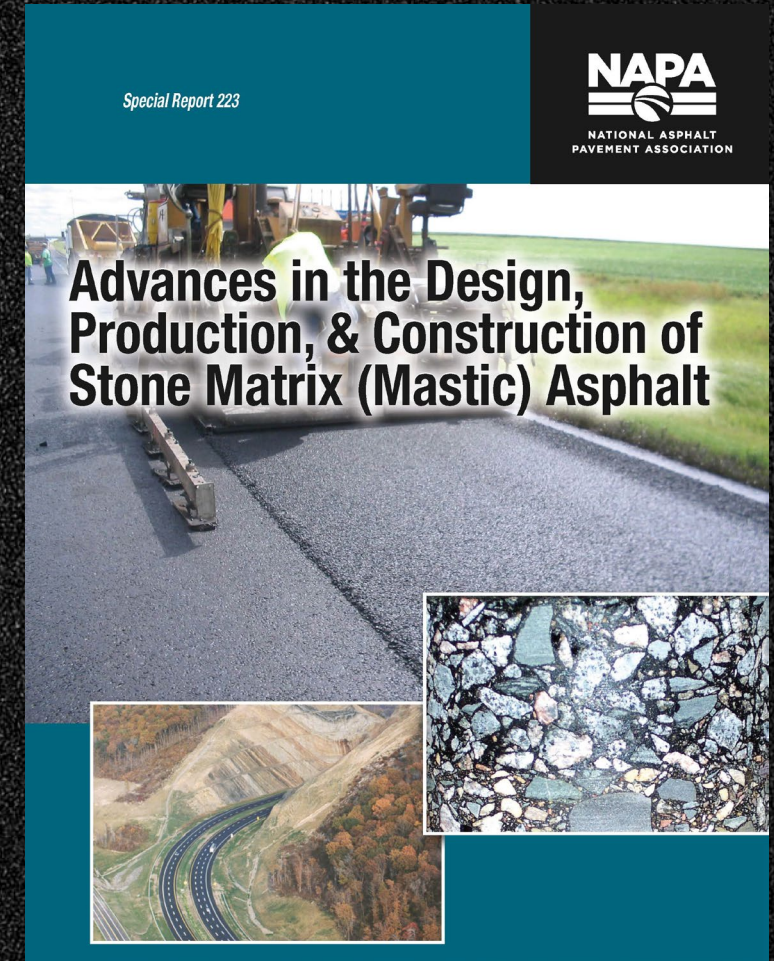


Innovative Pavement Design

Problems? Industry Can Find Solutions



Increased Use of Recycled Products



New Mixtures & Designs

Problems? Industry Can Find Solutions



National Center for Asphalt Technology



We Design & Build
Our Own Equipment

Do Good Work and Tell the World!

- Tell Our Story!
- Educate Owners
- Promote Our Value
 - Recycling
 - Perpetual Designs
 - Salvage Value
 - Speed of Construction

**What Do We
Need to Do?**

Do Good Research to Advance Industry

- Pavement Economics Committee
- Committee for Asphalt Research & Technology
- National Center for Asphalt Technology
- Sustainability Task Force
- Environmental Product Declarations

**What Do We
Need to Do?**



PLASTICS IN ASPHALT

PRO ACT

SUSTAINABILITY

RESILIENCY

BUY AMERICAN PROVISIONS

HOT TOPICS:

**What NAPA's
working on for
YOU!**



NATIONAL ASPHALT
PAVEMENT ASSOCIATION



Asphalt is...

- Versatile
- Value-Driven
- Sustainable
- Resilient
- Durable



Asphalt Is an
Engineering Product

State Asphalt Pavement Associations
Associate Member Council
Asphalt Pavement Alliance
Louisiana Delegation
National Center for Asphalt Technology
THE Asphalt Group
NAPA Staff
Winford/Prairie Family



**NATIONAL ASPHALT
PAVEMENT ASSOCIATION**

I believe

this is a practical world

and that I can count only on
what I earn. Therefore, I believe
in work, hard work.



NATIONAL ASPHALT
PAVEMENT ASSOCIATION

I believe in

education,

which gives me the
knowledge to work wisely and
trains my mind and my hands
to work skillfully.



NATIONAL ASPHALT
PAVEMENT ASSOCIATION

I believe in
honesty and truthfulness,
without which I cannot win
the respect and confidence
of my fellow men.



NATIONAL ASPHALT
PAVEMENT ASSOCIATION

I believe in

a sound mind,
a sound body, and
a spirit that is not afraid,
and in clean sports that
develop these qualities.



NATIONAL ASPHALT
PAVEMENT ASSOCIATION

I believe in
obedience to law,
because it protects the
rights of all.



NATIONAL ASPHALT
PAVEMENT ASSOCIATION

I believe in

the human touch,

which cultivates sympathy with
my fellow men and mutual
helpfulness and brings
happiness for all.



NATIONAL ASPHALT
PAVEMENT ASSOCIATION

I believe in

my Country,

because it is a land of
freedom and because it is
my own home,



NATIONAL ASPHALT
PAVEMENT ASSOCIATION

and that I can

best serve that country

by “doing justly, loving
mercy, and walking humbly
with my God.”



NATIONAL ASPHALT
PAVEMENT ASSOCIATION

And because NAPA men and
women believe in these things,

I believe in NAPA

and love it.



NATIONAL ASPHALT
PAVEMENT ASSOCIATION