



CORPORATE ENGAGEMENT  
2027 MEDIA KIT



# YOUR EXPERTISE

## SHARED YEAR-ROUND



2027 Academy Annual Meeting & Scientific Symposium

**LEADING WITH KNOWLEDGE  
DRIVEN BY CARE**

February 10 - 13, 2027 • New Orleans, LA

**Where Expertise Meets Impact**



**Corporate Engagement**

[www.oandp.org/corporate-engagement-2027](http://www.oandp.org/corporate-engagement-2027)



# WELCOME

The American Academy of Orthotists and Prosthetists (AAOP) stands as the foremost center for education, clinical practice resources, and expertise within the orthotics and prosthetics (O&P) industry. We are dedicated to providing the profession with unparalleled resources, continuous educational opportunities, and a strong commitment to advancing clinical research. Our primary objective is to enhance professional expertise and increase awareness across the O&P community.

We invite manufacturers in orthotics and prosthetics to collaborate with us in initiatives that support mutual growth. Engage with us throughout the year and during our Annual Meeting and Scientific Symposium to maximize opportunities for connection and development.

This Media Kit offers an overview of the various engagement opportunities available throughout the year, including during our Annual Meeting. For more information, please visit our **Corporate Engagement** website. All transactions will be processed through your vendor portal, and your cumulative spending for the year will determine your Partnership status with the Academy.

We look forward to collaborating with you to engage the O&P community!

My best,

Kate Feuling  
Exhibits & Sponsorship Manager

**PROMOTING PARTNERSHIPS THROUGH YEAR-ROUND ENGAGEMENT OPPORTUNITIES**

## THE AMERICAN ACADEMY OF ORTHOTISTS AND PROSTHETISTS BY THE NUMBERS

# 2400+

MEMBERS

PREMIER SOURCE OF LEARNING & KNOWLEDGE

- ▶ CLINICAL PRACTICE RESOURCES
- ▶ EXPERTISE IN O&P
- ▶ CLINICAL RESEARCH



# 27,000+

SOCIAL MEDIA FOLLOWERS

### THE BEST IN O&P EDUCATION

**11** SCIENTIFIC SOCIETIES

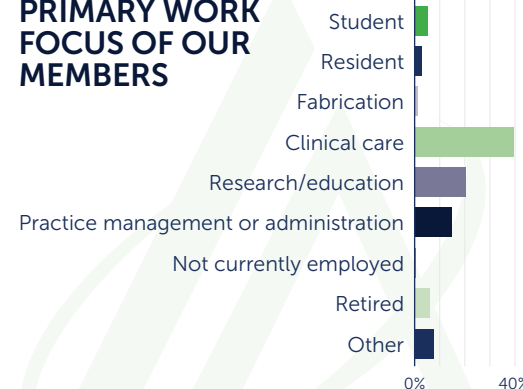
**120,000+**

INFLUENTIAL MOMENTS IN OUR WEEKLY E-NEWSLETTER

## WHY PARTNER WITH THE ACADEMY?



### PRIMARY WORK FOCUS OF OUR MEMBERS



# 40

FOCUSED PODCASTS  
22,000 ALL TIME DOWNLOADS

# 83%

OF MEMBERS SAY THE ACADEMY IS EFFECTIVE IN MOVING THE PROFESSION FORWARD



# CORPORATE ENGAGEMENT PARTNERSHIP LEVELS

**PARTNERSHIP LEVELS** are awarded based your combined spend on **Year-Round Engagement** and **Annual Meeting** opportunities for 2027.

| <b>PARTNERSHIP BENEFITS</b>  | <b>SILVER</b><br>\$12,000 | <b>GOLD</b><br>\$20,000      | <b>PLATINUM</b><br>\$35,000   | <b>DIAMOND</b><br>\$60,000            | <b>DIAMOND+</b><br>\$95,000           |
|--|---------------------------|------------------------------|-------------------------------|---------------------------------------|---------------------------------------|
| Company Feature in the On-Site Printed Program <b>(AM)</b>   | ✓                         | ✓                            | ✓                             | ✓                                     | ✓                                     |
| Company Feature on Corporate Engagement Webpage  | Linked Logo               | Linked Logo, 50-word feature | Linked Logo, 100-word feature | Banner, Linked Logo, 100-word feature | Banner, Linked Logo, 150-word feature |
| Opening Session Recognition <b>(AM)</b>  | ✓                         | ✓                            | ✓                             | ✓                                     | ✓                                     |
| Inclusion in <i>The Academy Road Trip</i> Exhibit Hall Game <b>(AM)</b>  | ✓                         | ✓                            | ✓                             | ✓                                     | ✓                                     |
| Inclusion in Road Trip Map in the On-Site Printed Program <b>(AM)</b>  | ✓                         | ✓                            | ✓                             | ✓                                     | ✓                                     |
| Additional Full-Conference Registration Badge <b>(AM)</b>  | 1                         | 3                            | 5                             | 10                                    | Unlimited                             |
| Company Feature in the On-Site Signage <b>(AM)</b>   | ✓                         | ✓                            | ✓                             | ✓                                     | ✓                                     |
| Priority Selection of Next Year's Exhibit Space <b>(AM)</b>  | ✓                         | ✓                            | ✓                             | ✓                                     | ✓                                     |
| One-Time-Use Attendee Email List <b>(AM)</b><br><i>(of those who have opted-in to hear from Manufacturers)</i> |                           | ✓                            | ✓                             | ✓                                     | ✓                                     |
| Featured Advertisement in <i>The Academy TODAY</i> and <i>The O&amp;P Edge</i>                                 |                           | ✓                            | ✓                             | ✓                                     | ✓                                     |
| Academy Partner Press Release  |                           | ✓                            | ✓                             | ✓                                     | ✓                                     |
| Waived Fee for Hosted Events in the Exhibit Hall <b>(AM)</b>   |                           |                              | ✓                             | ✓                                     | ✓                                     |
| Partner Spotlight in <i>The Academy TODAY</i>  |                           |                              | ✓                             | ✓                                     | ✓                                     |
| Waived Fee for use of Meeting Room at the Annual Meeting <b>(AM)</b><br><i>(as space allows)</i>               |                           |                              |                               | ✓                                     | ✓                                     |
| Social Media Post  |                           |                              |                               | 2                                     | 4                                     |
| Mobile App Banner Ad <b>(AM)</b>   |                           |                              |                               | ✓                                     | ✓                                     |
| Product Spotlight Email  |                           |                              |                               |                                       | ✓                                     |
| Impact Award and Press Release <b>(AM)</b>   |                           |                              |                               |                                       | ✓                                     |
| Exhibitor Highlight in the Show Daily and Academy ADVANTAGE—The Industry Partner Edition <b>(AM)</b>           |                           |                              |                               |                                       | ✓                                     |
| Full Page ad in the On-Site Printed Program <b>(AM)</b>  |                           |                              |                               |                                       | ✓                                     |

An **(AM)** following the partnership benefit signifies the item is associated with the Annual Meeting.



# YEAR-ROUND ENGAGEMENT OPPORTUNITIES OVERVIEW



For details on Year-Round Engagement Opportunities, scan this QR code or [click here](#).

## PRINT & DIGITAL MEDIA ADVERTISING

### ACADEMY ADVANTAGE

|                                     |                               |                    |
|-------------------------------------|-------------------------------|--------------------|
| <del>Leaderboard Ad</del> . . . . . | <del>SOLD OUT</del> . . . . . | <del>\$3,000</del> |
| Lower Leaderboard Ad . . . . .      |                               | \$2,750            |
| Top Banner Ad . . . . .             |                               | \$2,250            |
| Sponsored Content Ad . . . . .      |                               | \$1,500            |

**PURCHASE 4 CONSECUTIVE AD RUNS, RECEIVE 25% OFF**

### THE ACADEMY TODAY

|                            |         |
|----------------------------|---------|
| Back-Cover Ad . . . . .    | \$3,500 |
| Interior Page Ad . . . . . | \$3,000 |

Check out additional opportunities with *The Academy TODAY* under Educational Showcases.

### NEW BUZZ BUILDER BUNDLE . . . . . \$2,975

### PRODUCT SPOTLIGHT E-BLAST

|                        |         |
|------------------------|---------|
| One Email . . . . .    | \$2,500 |
| Two Emails . . . . .   | \$4,500 |
| Three Emails . . . . . | \$6,750 |
| Four Emails . . . . .  | \$9,000 |

### SCIENTIFIC SOCIETIES E-BLAST

|                     |       |
|---------------------|-------|
| One Email . . . . . | \$500 |
|---------------------|-------|

### SOCIAL MEDIA POST

|                       |         |
|-----------------------|---------|
| One Post . . . . .    | \$500   |
| Two Posts . . . . .   | \$900   |
| Three Posts . . . . . | \$1,275 |
| Four Posts . . . . .  | \$1,600 |

### PODCASTS

|  |         |
|--|---------|
| Academy Network – One Episode . . . . .          | \$1,000 |
| Academy Network – Three Episodes . . . . .       | \$2,750 |
| Industry Partner Edition – One Episode . . . . . | \$2,900 |

## EDUCATIONAL SHOWCASES

### THE ACADEMY TODAY

#### CEU Opportunity

|   |  |
|---|--|
| Editorial Article . . . . .                     | \$3,500                                    |
| Editorial Article – Extended Outreach . . . . . | \$2,500                                    |
| Editorial Article/Ad Combo . . . . .            | \$5,500 (w/ Interior Pg)   \$6,000 (w/ BC) |
| Editorial Article – Podcast . . . . .           | \$2,500                                    |
| Editorial Article – OLC Module . . . . .        | \$1,000                                    |
| Editorial Article – Campaign . . . . .          | \$10,000                                   |

### EDUCATIONAL WEBINAR

|                          |         |
|--------------------------|---------|
| CE Opportunity . . . . . | \$3,000 |
|--------------------------|---------|

### EDUCATIONAL SEMINAR (Virtual)

#### CEU Opportunity

|                      |         |
|----------------------|---------|
| Seminar . . . . .    | \$8,000 |
| Seminar Ad . . . . . | \$1,000 |

### UNCONFERENCE

#### CEU Opportunity

|  |             |
|--|-------------|
| 15-Second Educational Video . . . . .          | \$400 ea.   |
| Social Media Exposure . . . . .                | \$500       |
| 15-Minute Educational Presentation . . . . .   | \$1,000 ea. |
| Banner Ad In Event Promo Emails . . . . .      | \$500       |
| Sole Sponsorship . . . . .                     | \$5,500     |
| Add On Bundle for Post Event Webinar . . . . . | \$1,000     |

## FLEX FOR YOU

If you aren't finding an engagement opportunity that fits your marketing objectives, take advantage of our **Flex For You** program. We're committed to collaborating with you to identify a tailored solution that meets your needs. Let us help you find the perfect fit! **Contact us now.** [kfeuling@oandp.org](mailto:kfeuling@oandp.org)





## A MUST-ATTEND EVENT FOR THE O&P INDUSTRY

Seize the opportunity to exhibit at the must-attend annual event for orthotic and prosthetic professionals! Over four transformative days, you'll connect with a global audience eager to discover the latest advancements in patient care.

As an exhibitor, you'll position your brand at the forefront of the O&P industry, engaging with practitioners, healthcare professionals, researchers, academics, residents, and students in an inspiring and dynamic setting. This is your chance to showcase your cutting-edge breakthroughs and best practices that are shaping the future of the O&P industry.

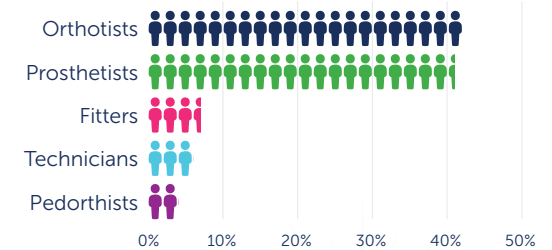
Join us at the heart of O&P continuing education and community. Don't miss your chance to be a key player in this vibrant event—secure your exhibit space today and help us drive innovation in patient care!

*"I exhibit at the Annual Meeting for brand awareness, to educate attendees, foster customer relationships, and to drive sales."*

## ACADEMY ANNUAL MEETING & SCIENTIFIC SYMPOSIUM BY THE NUMBERS

# 1966

ATTENDEES



### THE BEST IN O&P EDUCATION

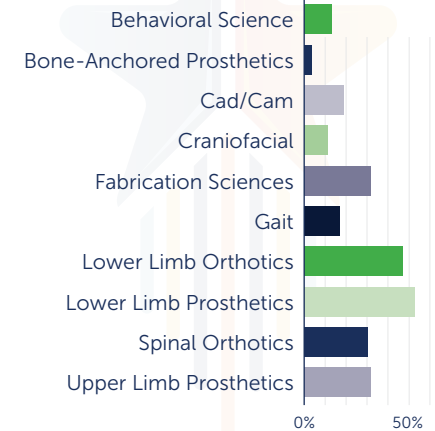
**100**  
INDUSTRY  
PARTNER-LEAD  
SESSIONS

**2:1**  
LEARNER TO  
EXHIBITOR RATIO

**165+**  
EXHIBITING  
COMPANIES

**16**  
HOURS OF  
EXHIBIT TIME

### EXHIBITOR CATEGORIES OF PATIENT CARE



*"We exhibit with the Academy as it is a good chance to educate our customers (new and old) and further build our relationships with vendors and clinicians."*

**96%**

OF EXHIBITORS REPORTED  
POSITIVE INTERACTIONS  
WITH ATTENDEES

Stats collected from AAOP2024.



# ANNUAL MEETING HOTEL & TRAVEL

Join us February at the **Hyatt Regency New Orleans** for a unique meeting experience set in the heart of Mardi Gras season. Just steps from downtown parades and festivities, you'll enjoy top-tier sessions alongside the city's iconic food, music, and culture.

From networking in the French Quarter to catching a parade after hours, New Orleans offers the perfect blend of professional growth and unforgettable celebration.

**Hyatt Regency New Orleans**  
**601 Loyola Ave**  
**New Orleans, LA 70113**

A block of rooms is being held at the hotel for \$215 night++. Check your exhibitor portal for the reservation link.



## EXHIBIT HOURS\*

|          | TUES, FEB 10                                | WED, FEB 11  | THURS, FEB 12  | FRI, FEB 13   |
|----------|---|--|--|---|
| 8:00 AM  | <b>Decorator Set-Up</b><br>8:00 AM–2:00 PM  | <b>Exhibitor Move-In</b><br>8:00 AM–4:00 PM<br><i>All exhibits must be set-up with all crates removed by 4:00 PM</i> | <b>Exhibit Hall Open</b><br>10:15 AM–5:15 PM<br><b>Unopposed Time</b><br>10:45 AM–12:45 PM<br><b>Unopposed Time</b><br>2:15 PM–4:00 PM | <b>Exhibit Hall Open</b><br>9:00 AM–3:00 PM<br><b>Unopposed Time</b><br>9:15 AM–11:00 AM<br><b>Unopposed Time</b><br>12:30 PM–2:30 PM |
| 9:00 AM  |   |  |  |   |
| 10:00 AM |   |  |  |   |
| 11:00 AM |   |  |  |   |
| 12:00 PM |   |  |  |   |
| 1:00 PM  | <b>Exhibitor Move-In</b><br>2:00 PM–8:00 PM | <b>Welcome Reception in Exhibit Hall</b><br>5:15 PM–7:15 PM  | <b>Exhibitor Move-Out</b><br>3:00 PM–11:00 PM  |   |
| 2:00 PM  |   |  |  |   |
| 3:00 PM  |   |  |  |   |
| 4:00 PM  |   |  |  |   |
| 5:00 PM  |   |  |  |   |
| 6:00 PM  |   |  |  |   |
| 7:00 PM  |   |  |  |   |
| 8:00 PM  |   |  |  |   |

\*Schedule subject to change.

**15 hours of captivating exhibit time with over 9 hours offerings a unique and uninterrupted experience**



# ANNUAL MEETING EDUCATIONAL SESSIONS

The Academy is excited to share that more than 60%, nearly 100 sessions, of the Annual Meeting's educational content is delivered by our valued Industry Partners. This unique opportunity allows partners to expand their impact beyond the exhibit hall and engage directly with the Academy's highly involved O&P community through dynamic educational programming. A range of session formats, time slots, and agenda placements are available to help you meet your specific goals. All sessions include continuing education units (CEUs) and come fully supported with a complete audiovisual package: projector, screen, laptop, microphone, and podium.

## CLINICAL TECHNIQUE

**When:** Thursday, 2/11 & Friday, 2/12

**Where:** Breakout room

**Availability:** 10

Clinical Techniques expertly blend lecture and hands-on techniques to provide serious, in-depth programming. Utilize **60 minutes** to inform O&P professionals on new techniques, or to review current methodologies or technologies.

## PRODUCT DISPLAY SHOWCASE

**When:** Thursday, 2/11 & Friday, 2/12

**Where:** Inside Exhibit Hall on a dedicated stage during unopposed exhibit time

**Availability:** 12

Product Display Showcases provide the opportunity to offer a brief infomercial-style educational showcase in a theater inside the exhibit hall. These are **30-minute** presentations that highlight your company's services and products that are featured during unopposed exhibit times.

## TECHNICAL WORKSHOP\*

**When:** Wednesday 2/10

**Where:** Breakout room, see time details below.

**Availability:** Differs by session type: One-Hour = 12, 90-Minutes = 24, 2-Packs = 12

**One-Hour Workshop:** 8:00–9:00 AM

**90-Minute Workshop:** 9:15–10:45 AM, **or** 1:00–2:30 PM, as assigned by the Academy

**One-Hour Workshop (2-Pack):** 11:00 AM–12:00 PM **and** 2:45–3:45 PM, one morning slot and one afternoon slot will be assigned

Technical Workshops are factual presentations that offer new solutions to existing problems. These sessions provide an ideal atmosphere to share your expertise, demonstrate techniques, and provide you with the opportunity to discuss procedures that distinguish your company's products to O&P professionals.

*\* The 2-Packs include two, one-hour sessions, one will be hosted in the morning, the other in the afternoon. You may repeat your content, have two separate topics, or choose to have a Part 1/Part 2 format.*

## INNOVATION STAGE

**When:** Thursday, 2/11 & Friday, 2/12, these run all day

**Where:** Inside Exhibit Hall on a dedicated stage

**Availability:** 10

Welcome to the epicenter of cutting-edge ideas and pioneering breakthroughs. As an integral part of our Meeting, the Innovation Stage is where innovation enthusiasts, industry leaders, and visionaries gather to explore the limitless possibilities of tomorrow. Give the attendees a front-row seat to witness innovation in action. Help them discover the latest technologies, disruptive business models, and inventive solutions that are reshaping the industry with these **15-minute** mini sessions hosted on a dedicated stage, inside the exhibit hall.



# ANNUAL MEETING OPPORTUNITIES OVERVIEW



For details on Annual Meeting Opportunities, scan this QR code or [click here](#).

## EXHIBIT PACK AGES

|                | EARLY BIRD<br>2/20/26–5/31/26 | STANDARD<br>6/1/26–1/31/27 |
|----------------|-------------------------------|----------------------------|
| Standard Booth | \$3,900                       | \$4,350                    |
| Booth Upgrade  | \$250                         | \$450                      |
| Tabletop       | \$2,800                       | \$3,250                    |

**FIRST TIME EXHIBITORS RECEIVE 25% OFF AND NONPROFITS 20% OFF.**

## EDUCATIONAL SESSIONS

### CEU Opportunity

|                                       |         |
|---------------------------------------|---------|
| Clinical Technique                    | \$1,000 |
| Product Display Showcase              | \$1,400 |
| Technical Workshop, 90-Minute         | \$1,100 |
| Technical Workshop, One-Hour (2-pack) | \$1,700 |
| Technical Workshop, One-Hour          | \$975   |
| Innovation Stage                      | \$600   |

*Educational sessions available to exhibiting companies only.*

## EXHIBIT SPACE ADD-ON

**NEW** New Product or Services Highlight ..... \$1,000

## EDUCATIONAL SESSION ADD-ONS

|   |       |
|---|-------|
| Ed Session Feature Ad                   | \$500 |
| Ed Session Mobile App Push Notification | \$400 |

*In addition, reference our Show Daily & Academy ADVANTAGE offerings under Digital Outreach.*

## MEETING ROOM / RECEPTION RENTAL

*Available to exhibiting companies only.*

|                            |         |
|----------------------------|---------|
| Meeting Room - Half Day    | \$350   |
| Meeting Room - Full Day    | \$550   |
| Reception of 50-100 People | \$750   |
| Reception of 100+ People   | \$1,800 |

## REGISTRATION

|  |                     |
|--|---------------------|
| Bag Stuffer  | \$2,500             |
| <del>Lanyards and Adhesive Pockets</del> <b>SOLD OUT</b> | <del>\$12,000</del> |
| Registration Sponsor                                     | \$10,000            |
| <del>Attendee Registration Bag</del> <b>SOLD OUT</b>     | <del>\$12,000</del> |

## DIGITAL OUTREACH

|  |             |
|--|-------------|
| <b>NEW</b> Live from AAOP: Social Spotlight Reel | \$1,500     |
| <b>NEW</b> Digital Impact Board (single)         | \$3,000     |
| <b>NEW</b> Digital Impact Board (multiple)       | \$2,500 ea. |

|                              |         |
|------------------------------|---------|
| Mobile App Push Notification | \$1,500 |
| Mobile App Banner Ad         | \$2,500 |
| Website Sponsor Banner Ad    | \$2,000 |
| Power-Up Station             | \$5,500 |
| Broadcast Email              | \$2,500 |

### Social Media Post

|                                     |         |
|-------------------------------------|---------|
| One Post                            | \$500   |
| Two Posts                           | \$900   |
| Three Posts                         | \$1,275 |
| Four Posts                          | \$1,600 |
| Event Promo – Email Inclusion       | \$8,000 |
| Countdown to Show – Email Inclusion | \$6,500 |

### Pre-Show Podcast Series:

**NEW** Inside the Exhibit Hall - What You Need to See ..... \$1,000

### Show Daily

|                         |         |
|-------------------------|---------|
| Leaderboard Ad          | \$3,000 |
| Lower Leaderboard Ad    | \$2,750 |
| Ed Session Highlight Ad | \$2,500 |
| Showcase Banner         | \$2,000 |

### Academy ADVANTAGE—The Industry Partner Edition

|                         |         |
|-------------------------|---------|
| Leaderboard Ad          | \$2,000 |
| Lower Leaderboard Ad    | \$1,500 |
| Ed Session Highlight Ad | \$1,000 |
| Exhibitor Highlight Ad  | \$750   |



To view the product gallery, scan this QR code or [click here](#).



# ANNUAL MEETING OPPORTUNITIES OVERVIEW (CONT.)



For details on Annual Meeting Opportunities, scan this QR code or [click here](#).

## F&B / SPECIAL EVENTS

|   |                |
|---|----------------|
| <b>NEW Trivia Night F&amp;B Sponsor</b> ..... | <b>\$5,000</b> |
| Grab & Go Lunch.....                          | \$6,500        |
| Hosted Events in the Exhibit Hall.....        | \$750          |
| Welcome Reception.....                        | \$5,000        |
| <b>Professional Headshots</b>                 |                |
| One Day.....                                  | \$4,000        |
| Two Day.....                                  | \$7,000        |
| Custom Branded Mini Figurine Lego Bar.....    | \$14,000       |
| 16' Branded Photo Mosaic Wall.....            | \$14,500       |

## SCHOLARSHIP

|   |                    |
|---|--------------------|
| <del>Empowering Emerging Voices</del> <b>SOLD OUT</b> ..... | <del>\$1,500</del> |
|---|--------------------|

## PRINT PROMOTION

|  |         |
|--|---------|
| Annual Meeting Preview Ad.....             | \$2,000 |
| Annual Meeting Preliminary Program Ad..... | \$2,000 |
| Preview/Preliminary Program Bundle.....    | \$3,500 |
| <b>My Meeting Guide</b>                    |         |
| Interior Front Cover, Full-Page Ad.....    | \$2,550 |
| Back Cover, Full-Page Ad.....              | \$3,850 |
| Banner Ad.....                             | \$1,250 |
| Floor Plan Map Ad.....                     | \$1,000 |
| Exhibitor Highlight Ad.....                | \$500   |
| Exhibitor List Directory Ad.....           | \$300   |

## The Academy Road Trip Exhibit Hall Game

|                       |         |
|-----------------------|---------|
| Game Participant..... | \$1,100 |
| Back Cover Ad.....    | \$1,500 |

## BRAND MERCHANDISE

|   |                                |
|---|--------------------------------|
| Custom Die-Cut Vinyl Sticker.....                             | \$1,000                        |
| Branded Bottled Water.....                                    | \$2,000                        |
| Mini Mint Tin.....  | \$3,000                        |
| Soft Bound Journal.....                                       | \$4,500                        |
| 3-Port USB Charger.....                                       | \$6,500                        |
| 3-in-1 Charging Cable.....                                    | \$10,000                       |
| <del>High End Water Bottles</del> ..... <b>SOLD OUT</b> ..... | <del>\$15,000 / \$26,000</del> |

## HOTEL BRANDING

|   |                     |
|---|---------------------|
| <del>Hotel Key Cards and Steeves</del> ..... <b>SOLD OUT</b> .....          | <del>\$12,000</del> |
| Double Sided Meter Board.....   | \$850               |
| Main Entrance Upper Windows.....  | \$5,000             |
| Main Entrance Revolving Door (SS).....                                      | \$3,500             |
| Main Entrance Revolving Door (DS).....                                      | \$5,000             |
| <del>Main Lobby Welcome Banner (Co-Branded w/ Academy)</del> .....          | <del>\$12,000</del> |
| Main Lobby Escalators.....  | \$8,500             |
| Elevator Floor Graphics (4 Banks, 4 Clings).....                            | \$5,000             |
| Elevator Floor Graphics (All 8 Banks, 8 Clings).....                        | \$8,500             |
| Elevator Window Graphics Top<br>(All 8 Banks, 16 Clings).....               | \$10,000            |
| Elevator Window Graphics Top<br>(One Bank, 2 Clings).....                   | \$1,500             |
| Elevator Window Graphics Bottom<br>(All 8 Banks, 16 Clings).....            | \$8,000             |
| Elevator Window Graphics Bottom<br>(One Bank, 2 Clings).....                | \$1,250             |
| Exhibit Hall Entry Way (Co-Branded w/ Academy).....                         | \$6,500             |
| Two Story Escalator Cling Climb (60 Clings).....                            | \$6,500             |
| Back-lit Column Panels (One Column).....                                    | \$5,500             |
| Back-lit Column Panels (Three Columns).....                                 | \$13,000            |
| Main Bar Mirror Graphics (4 Clings).....                                    | \$4,500             |
| Main Bar Mirror Graphics (8 Clings).....                                    | \$8,000             |
| Back-Lit Wall Graphics (Set of 3 Clings).....                               | \$5,000             |
| Window Cling Above 8 Block.....   | \$4,000             |
| Celestine Foyer Column Clings (One Column).....                             | \$4,500             |
| Celestine Foyer Column Clings<br>(Three Columns/Co-Branded w/ Academy)..... | \$11,500            |
| Celestine Foyer Railing Cling.....  | \$4,000             |



To view the product gallery, scan this QR code or [click here](#).



# OPPORTUNITIES ACADEMY TIMELINE

Educational Webinars and Seminars may be scheduled at any point during the year.

|  | JAN | FEB | MAR | APR | MAY | JUN | JUL | AUG | SEP | OCT | NOV | DEC |
|--|-----|-----|-----|-----|-----|-----|-----|-----|-----|-----|-----|-----|
| The Academy ADVANTAGE (weekly)   | ✓   | ✓   | ✓   | ✓   | ✓   | ✓   | ✓   | ✓   | ✓   | ✓   | ✓   | ✓   |
| Academy Network Podcast (monthly)  | ✓   | ✓   | ✓   | ✓   | ✓   | ✓   | ✓   | ✓   | ✓   | ✓   | ✓   | ✓   |
| Industry Partner Edition Podcast (quarterly)                                       | ✓   |     |     | ✓   |     |     | ✓   |     |     | ✓   |     | ✓   |
| <i>The Academy TODAY</i> (quarterly)   | ✓   |     |     | ✓   |     |     | ✓   |     |     | ✓   |     | ✓   |
| Product Spotlight Email (monthly)  | ✓   | ✓   | ✓   | ✓   | ✓   | ✓   | ✓   | ✓   | ✓   | ✓   | ✓   | ✓   |
| Social Media Post (monthly)  | ✓   | ✓   | ✓   | ✓   | ✓   | ✓   | ✓   | ✓   | ✓   | ✓   | ✓   | ✓   |
| <b>Countdown to Show</b>   | ✓   | ✓   |     |     |     |     |     |     |     |     |     |     |
| <b>Pre-Show Podcast Series:<br/>Inside the Exhibit Hall - What You Need to See</b> | ✓   |     |     |     |     |     |     |     |     |     |     | ✓   |
| <b>Preliminary Program</b>   | ✓   |     |     |     |     |     |     |     |     |     |     |     |
| <b>Broadcast E-Mail</b>  | ✓   | ✓   | ✓   |     |     |     |     |     |     |     |     |     |
| <b>Academy ADVANTAGE—The Industry Partner Edition</b>                              | ✓   |     |     |     |     |     |     |     |     |     |     |     |
| <b>Exhibit</b>   |     | ✓   |     |     |     |     |     |     |     |     |     |     |
| <b>Educational Sessions</b>  |     | ✓   |     |     |     |     |     |     |     |     |     |     |
| <b>Show Daily</b>  |     | ✓   |     |     |     |     |     |     |     |     |     |     |
| <b>Annual Meeting Sponsorships</b>   |     | ✓   |     |     |     |     |     |     |     |     |     |     |
| <b>Event Promo Email Inclusion</b>   |     |     |     |     |     |     |     |     | ✓   | ✓   | ✓   | ✓   |
| <b>Annual Meeting Preview</b>  |     |     |     |     |     |     |     |     |     | ✓   |     |     |

ANNUAL MEETING



# READY TO GET INVOLVED?



Need more information  
on our Engagement  
Opportunities?

[CLICK HERE](#)



Looking for information  
to exhibit at AAOP2027?

[CLICK HERE](#)



Reserve your  
sponsorship or  
exhibit space.

[CLICK HERE](#)

