



Association Executive Meet and Greet

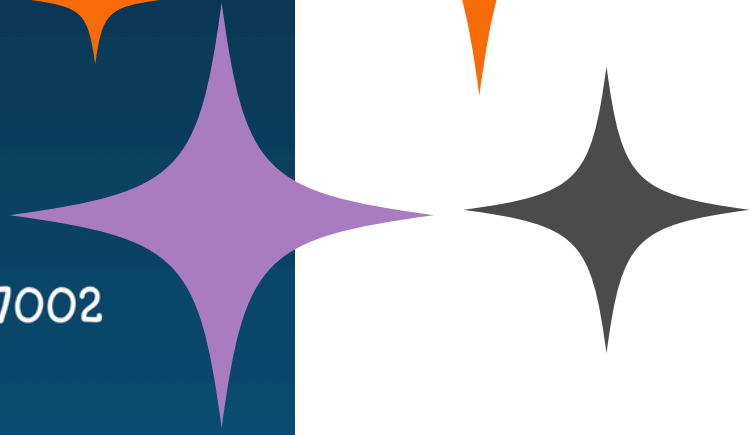
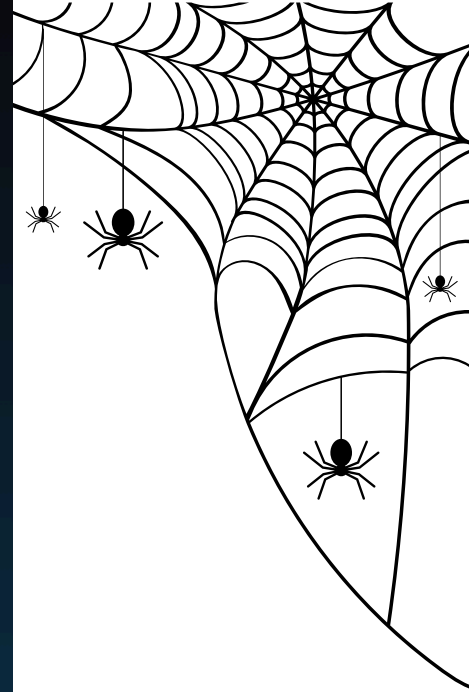


The AAGW is happy
to introduce
Heather Wells as
the new
Association
Executive!
Come join us in
welcoming her!

EVENT TAKES PLACE:

Thursday, Oct. 24th
5 PM - 7 PM

Sunstone Apartments:
711 Cloud Ave, Andover, KS 67002



PAGE 1
MEET &
GREET FOR
HEATHER

PAGE 2
SUPPLIER LUNCH
OCTOBER MEMBERSHIP
MEETING
UPCOMING DATES

PAGE 3
SUPPLIER APPRECIATION
PINS FOR PAC
BOARD NOMINATIONS
AAGW AMBASSADORS

PAGE 4
SUPPLIER
BUSINESS
CARDS





SUPPLIER NETWORKING LUNCH

JOIN US FOR OUR NEXT SUPPLIER LUNCH. COME TOUR FOX RUN APARTMENTS

OCTOBER 15TH, 2024 @ NOON
1157 S WEBB
WICHITA, KS 67207

REGISTER AT MYAAGW.COM



All Rise! LOCAL LEGAL UPDATE

THURSDAY, OCTOBER 17, 2024
11:30 AM TO 1:00 PM
WICHITA BOATHOUSE



PRESENTED BY:
KURT HOLMES
GARRETT HOLMES
KURT A HOLMES LAW P.A.

SPONSORED BY:



OCTOBER 2024

SUN MON TUE WED THU FRI SAT

| | | | | | | |
|----|----|----|----|----|----|----|
| | | 1 | 2 | 3 | 4 | 5 |
| 6 | 7 | 8 | 9 | 10 | 11 | 12 |
| 13 | 14 | 15 | 16 | 17 | 18 | 19 |
| 20 | 21 | 22 | 23 | 24 | 25 | 26 |
| 27 | 28 | 29 | 30 | 31 | | |

BOARD OF DIRECTORS MEETING

- OCTOBER 10TH @ 11:30AM - AAGW OFFICE (DOWNTOWN)

SUPPLIER NETWORKING LUNCH

- OCTOBER 15TH @ 12:00 PM - FOX RUN APARTMENTS

MEMEBERSHIP MEETING

- OCTOBER 17TH @ 11:30AM - WICHITA BOATHOUSE

MEET & GREET W/ HEATHER

- OCTOBER 24TH @ 5:00 PM - SUNSTONE @ MARKETPLACE (ANDOVER)

Register online today!

COMMUNITY AMBASSADORS



MICK LOWDERMAN

Owner
Go Green Pest Control
(316) 680-6164
mick@gogreenpestcontrol.com

DAVID PFAFF

Outside Sales
The Tap of KS
(316) 249-7858
dphaff@thetapofks.com

ARIC HANNA

ARD Outside Sales
Metro Appliances & More
(316) 633-0710
Aric.H@Metro1974.com

KEN MOLDENHAUER

Owner
CertaPro Painting
(316) 641-6708
kmoldenhauer@certapro.com

MAX NUNO

Sales Manager
Guthrie Towing & Recovery
(316) 644-7282
max@guthrietow.com

RACHEL JANES

Owner-Rachel Janes Agency
Shelter Insurance
(316) 522-5055
rjanes@shelterinsurance.com

JEREMY PARKS

Business Development
Furniture Options
(316) 670-9722
JParks@FurnitureOptions.com

STEPHANIE MARNELL

General Manager
Pinnacle Staffing
(316) 710-5190
stephanie.marnell@pinnacle-staff.com

Apartment Association of
Greater Wichita's

PINS FOR

NAA PAC

Fundraising Event

FRIDAY, NOVEMBER 1ST
3 PM - 5 PM



Let's Roll Derby:
444 S Baltimore Ave, Derby, KS 67037

Supplier Appreciation Event

The AAGW wants to thank the suppliers
for their hard work this year.



Friday, November 8th
6 PM - 9 PM

Tor Brewing:
222 S. Commerce St., Wichita, KS 67202

COMING
SOON

BOO!

2025 BOARD OF DIRECTORS NOMINATIONS

It is time to select our 2025 Board of Directors! Nomination forms will go out this week. You can nominate yourself and/or a colleague. Nomination forms must be turned in by November 1st!



COX | Communities

Bringing us closer

David Geier
 MDU Account Manager
 Cox Signature Communities
 901 S. George Washington Blvd
 Wichita, KS 67211
 Coll: 316.285.4693
 david.geier@cox.com
 www.cox.com

Tiffany Kennedy
 MDU Account Manager
 Cox Signature Communities
 901 S. George Washington Blvd
 Wichita, KS 67211
 Coll: 316.932.3591
 tiffany.kennedy@cox.com
 www.cox.com



furniture Options

FURNITURE RENTAL & SUBSCRIPTIONS
 FOR PEOPLE ON THE MOVE

Sofas • Chairs • Tables • Dining
 Accessories • Beds • Electronics




FurnitureOptions.com
 316.263.5750

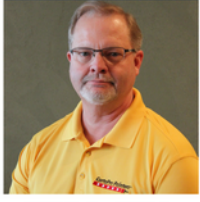


Get smart about your coverage!

316.265.2220
KATHERINE SANNEMAN
 Your Local Farmers Agent
 3555 E DOUGLAS AVE STE 600
 WICHITA, KS 67218
 KSANNEMAN@FARMERSAGENT.COM

Ken Moldenhauer



OFFICE 316-440-0161
 TOLL-FREE 800-689-7271
 CELL 316-641-6708

kmoldenhauer@certapro.com
 certapro.com/wichita-east

3979 N Woodlawn Cr Suite 1
 Bel Aire, KS 67220



Gary Abner
 Flooring Specialist
 gary.e.abner@sherwin.com
 316.655.1820

Jenny Herman
 Paint Specialist
 jenny.r.herman@sherwin.com
 316.243.7783

4040 West Central
 Wichita, KS 67212
 www.sherwin.com



ARIC HANNA
 ARD Outside Sales
 Cell: 316-633-0710
 Aric.H@Metro1974.com

3545 N. Hillside
 Wichita, KS 67219
 Phone: 316-941-4940
 Fax: 316-941-4050

TULSA • OKLAHOMA CITY • LOWELL • LITTLE ROCK
 JONESBORO • JOPLIN • SPRINGFIELD • WICHITA


We're your Shield. We're your Shelter.



® AUTO • HOME • LIFE



Rachel Janes
 260 N. Main St., Ste. 200A
 Haysville, KS 67060
 316-522-5055 (Call or Text)
 RJanes@ShelterInsurance.com



Pinnacle
 STAFFING GROUP

316.710.5183

Stephanie Marnell
 General Manager
 316.710.5190 Office

www.pinnacle-staff.com
 stephanie.marnell@pinnacle-staff.com



Monte McKee
 Local Owner,
 Fitness Machine Technicians Wichita

4959 S Lulu Ct, STE 25
 Wichita, KS 67216

316-867-3681
 MMckee@FitnessMachineTechnicians.com
 FitnessMachineTechnicians.com/ICT



Real Estate Personnel

realityjobs.com

(316) 665-6575

Staffing the Best, For the Best!