



AAGW

APARTMENT ASSOCIATION OF GREATER WICHITA



NOVEMBER 2022

PAGE 1

VALET LIVING

PAGE 2

AAGW LIFE CAPTURED

WELCOME NEW MEMBERS

GRAPEVINE

PAGE 3

UPCOMING EVENTS

COMMUNITY AMBASSADORS

MEMBER OF THE MONTH

PAGE 4

SPOTLIGHT VENDORS



Turn Your Living Room into a Gym — and Your Kitchen into a Cafe!

Connect to easy living by downloading the Valet Living Home app today!

Workout!
We've all been stuck at home for too long (admittedly eating too many snacks). Now that Valet Living Home is at your community, get connected to live trainers with dozens of **FREE fitness classes** per week, specifically tailored for apartment spaces. Let's get moving!

Vegout!
We've made getting in shape easy, but we also give you reasons to rebel! The Valet Living Home app connects you to more than 20 **FREE virtual events** a month — including weekly trials with cash prizes, cooking and art classes, cocktail and DIY instructions, entertainment and child-friendly programs. Learn something new!

Trashout!
Spending more time at home also means more trash. And it's not just at your place! We've noticed a 30% increase in trash at communities we serve across the country. The Valet Living Home app makes it easy to get rid of your trash and recycling **right outside your front door**. No more smelly trips to the dumpster!

You won't miss pick up with real-time updates before, during, and after collection. And coming home late is no longer a problem. Just use the "Pick up my trash" feature and your Service Valet will return to pick up your trash if he or she is still on property.

Scan to download the Valet Living Home app, visit the Apple App or Google Play stores, or simply ensure your app is updated to connect with the benefits of Valet Living Home today!

This is Living! ValetLiving.com | (844) 807-9196 | deeann.field@valetliving.com

Valet Living Doorstep Collection Guide

Sunday	Monday	Tuesday	Wednesday	Thursday	Friday	Saturday
7 PM	7 PM	7 PM	7 PM	7 PM	🚫	🚫

Please Place Your Container Outside Starting at 5 PM

- PREPARATION**
 - Bag and tie all waste
 - Do not include sharp objects like broken glass or needles
 - Double bag pet waste and place in trash to help prevent leaks and stains
 - Keep your bag weight under 25 pounds
 - Bundle newspapers and magazines
 - COLLECTION**
 - Flatten all cardboard boxes and place outside
 - If you have more than one bag, open the lid and place the second tied bag inside the container on top of the first bag
 - Place your container, holding your tied bag, outside your door during the two-hour window before collection starts, as listed above
 - RETURN & REPEAT**
 - Bring your container back inside your home by 9:00 AM the next morning
 - Now, go have fun instead of going to the dumpster!
- No Service Holidays**
New Year's Eve & New Year's Day
Easter Sunday
Memorial Day
Fourth of July
Labor Day
Halloween
Thanksgiving Day
Christmas Eve & Christmas Day

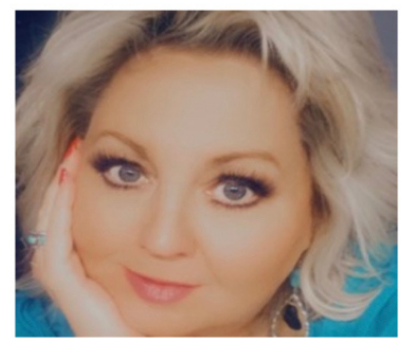
Get the App and Never Miss Trash Pick Up!

- Request a come-back from your Service Valet before he or she leaves your community
- Receive live collection notifications
- Get real-time schedules and trash collection tips

Scan the code or text "Living" to (813) 755-8755

Valet Living
Setting the Standards
ValetLiving.com | (844) 807-9196

- Enhance the Resident Experience**
Provide a differentiated resident experience that delights residents and makes their lives easier
- Build Community**
Enable your residents to make personal and virtual connections and help create a sense of community
- Save Time and Money**
Deliver amenity offerings that reduce work for your on-site staff and lower overall operational expenses
- Increase NOI**
Lease vacant units quicker, have more renewals and increase resident satisfaction while increasing your amenity fee



Deeann Field | Regional Sales Executive
Oklahoma City, OK Metro Area
Wichita, KS
m. 918-740-0930 | deeann.field@valetliving.com



All Valet Living logos and images associated therewith, and all other Valet Living products and services, are trademarks or registered trademarks of Valet Living, LLC in the United States and other countries.

AAGW LIFE CAPTURED!

2022 CAM & CAS Candidates!



Great job on completing your class! Good Luck on your final testing!

GRAPEVINE



Teri Poff

Happy 1 year Anniversary to Teri Poff! We are fortunate to have her at Mid-Town Apartments! From Harvest Property Management!

Kevin Woodson



Kevin has been promoted to Maintenance Supervisor at Riverwalk Apartments! He has the greatest attitude and gets the job done! Congratulations Kevin!

NEW MEMBERS!



HORIZONS EAST

Shirkmere
Apartments

Efficient Property
Management
Solutions



During this season of Thanks- we just want to say THANK YOU to our entire membership for ALL you do to support the AAGW

Membership Meeting

Chicken-N-Pickle

November 10, 2022

11:30 AM - 1:00 PM

CONFLICT RESOLUTION

Presented by:
Lea Aunins, Empac

Sponsored By:
Go Green Pest Control



NOVEMBER MEMBERSHIP MEETING

• NOV 10TH, 2022 11:30 @ CHICKEN N PICKLE

BOARD OF DIRECTORS MEETING

• NOV 17TH, 2022 11:30-1PM @ AAGW OFFICE

SUPPLIERS COUNCIL MEETING

• NOV 16TH, 2022 12-1PM @ AAGW OFFICE

ASHLEY TOUCHATT

Property Maint. Rep.
Sherwin Williams
(316)243-7783

Ashley.L.Touchatte@Sherwin.com

STEPHANIE O'CONNELL

Account Representative
David Curry State Farm
(316)634-2125

Stephanie@DavidWCurry.com

DAVID PFAFF

Business Development
Belfor Property Restoration
(316)469-1894

David.Pfaffe@Us.Belfor.com

JEREMY PARKS

Business Development
Furniture Options
(316)670-9722

JParks@FurnitureOptions.com

ARIC HANNA

ARD Outside Sales
Metro Appliances & More
(316)633-0710

Aric.H@Metro1974.com



GIANNA WILLIAMS

Owner
Flamingo Ink
(316)665-6544
Gianna@FlamingoInk.com

PEGGY AVILEZ

Client Relationship Manager
Lease Locators, LLC
(316)944-9632

PAviles@LeaseLocatorsLLC.com

GERON SMITH

Vice President
Precision Construction
Services
(316)260-9200

Geron@Precision-ICT.com

ERIC FAHNESTOCK

Franchisee
OxiFresh Carpet Cleaning
(316)655-4303

Eric@OxiFreshKs.com

STEPHANIE MARNELL

Branch Manager
Ascend Staffing
(888)728-7874
SMarnell@ascendstaffing.com

GETTING TO KNOW STEPHANIE O'CONNELL!

By: Stacey Bradley, Case & Associates

Our Member of the Month is Stephanie O'Connell with David Curry State Farm. Stephanie has been in the multi-family industry for 2.5 years.

Prior to joining this awesome industry Stephanie spent time in the oil/gas industry and the healthcare industry. Being in a position to help people has always been her passion. Now Stephanie gets to help people protect themselves and their assets. Her favorite part of her job is being able to educate people on their options/coverages. So many people lack information-and it is a joy for her to provide that to so many. Stephanie loves working for David Curry State Farm-her potential and opportunity to grow is endless!

Stephanie has been involved with the AAGW mainly through the Supplier's Council. This year Stephanie is excited to serve as the Vice President of the Supplier's Council. She is excited to take on her first project: The 2023 Supplier/Member Directory! She also looks forward to the 2023 Trade Show!

In her free time, Stephanie enjoys summer weekends at the lake and football nights in the fall! She loves to dress up her dog Duchess and spending time with her family and friends. Stephanie's mom used to say "The grass is greener where you water it" and Stephanie couldn't agree more.

Thank you Stephanie for all you do to support the AAGW!



COX | Communities
Bringing us closer

David Geier
MDU Account Manager
Cox Signature Communities
901 S. George Washington Blvd
Wichita, KS 67211
Cell: 316.285.4693
david.geier@cox.com
www.cox.com

Tiffany Kennedy
MDU Account Manager
Cox Signature Communities
901 S. George Washington Blvd
Wichita, KS 67211
Cell: 316.932.3591
tiffany.kennedy@cox.com
www.cox.com



360 E William, Suite 101 | Wichita, KS 67202
T: 316-665-6544 | E: orders@flamingoink.com
flamingoink.com



COPY & PRINT | FLIERS | BUSINESS CARDS | PRESENTATIONS | +MORE

BELFOR (●)

PROPERTY RESTORATION



Dave Pfaff
Business Development
Cell: 316.469.1894
david.pfaff@us.belfor.com

RESTORING MORE THAN PROPERTY



Get smart about your coverage!

316.265.2220

KATHERINE SANNEMAN
Your Local Farmers Agent
3555 E DOUGLAS AVE STE 600
WICHITA, KS 67218
KSANNEMAN@FARMERSAGENT.COM



furniture Options

FURNITURE RENTAL & SUBSCRIPTIONS
FOR PEOPLE ON THE MOVE

Sofas • Chairs • Tables • Dining
Accessories • Beds • Electronics



FurnitureOptions.com
316.263.5750

Esther Mills
General Manager

316-665-6575

Esther@Realtyjobs.com
www.Realtyjobs.com

Real Estate Personnel
4601 Douglas Ave, Suite 346
Wichita, KS 67218

METRO
APPLIANCES & MORE

ARIC HANNA ARD Outside Sales Cell: 316-633-0710 Aric.H@Metro1974.com	3545 N. Hillside Wichita, KS 67219 Phone: 316-941-4040 Fax: 316-941-4050	LOU CALKINS ARD Outside Sales Cell: 316-761-6176 Louella.C@Metro1974.com
--	---	--

TULSA • OKLAHOMA CITY • LOWELL • LITTLE ROCK
JONESBORO • JOPLIN • SPRINGFIELD • WICHITA

WELCOME TO LIFE ... WITHOUT PESTS!

AMERICAN PEST MANAGEMENT INC.

PEGGY AVILEZ
Wichita Regional Manager
wichitamanager@americanpestonline.com
1527 S Washington, | Wichita, KS 67211
PHONE (316) 262-7378 CELL (316) 644-4946
WWW.AMERICANPESTONLINE.COM

DSF
DESIGN SOURCE
FLOORING

MultiFamily Flooring Specialist
Kim Robertson, Account Manager
316.519.9080 kroberson@dsfflooring.com

LEASE LOCATORS
LLC
www.LeaseLocatorsLLC.com
Your Leasing Partner

(P) 888-728-7874 smarnell@ascendstaffing.com

AscendStaffing

Stephanie Marnell
Branch Manager

SHERWIN-WILLIAMS
The Americas Group

Tom Stewart Flooring Specialist thomas.a.stewart@sherwin.com 316.655.1820	Ashley Touchatt Paint Specialist ashley.l.touchatt@sherwin.com 316.243.7783
---	---

4040 West Central
Wichita, KS 67212
www.sherwin.com