



AAGW

APARTMENT ASSOCIATION OF GREATER WICHITA

MARCH 2022

Happy St Patrick's Day!



PAGE 1

NAA PAC DREAM VACATION GIVEAWAY

WELCOME NEW MEMBERS

PAGE 2

MEMBERSHIP AND FAIR HOUSING SEMINAR

AAGW TRIVIA

GRAPEVINES

PAGE 3

"RUN FOR THE ROSES"

COMMUNITY AMBASSADORS

MEMBER OF THE MONTH

PAGE 4

SPOTLIGHT VENDORS



Advocate Sweepstakes

Choose Your Dream Vacation:

WINE & DINE IN TUSCANY OR DISCOVER TAHOE'S PRISTINE BEAUTY



BUON APPETITO IN TUSCANY

Escape to Cortona, one of Tuscany's oldest hill towns, where strolls down the narrow medieval streets reward you with incredible views of the countryside. With private accommodations, you're perfectly poised to explore the romance of the Italian countryside - with its breathtaking scenery, historic cities, medieval art, impeccable wines and divine cuisine!

DETAILS:

- 6 days/5 nights accommodations at a two-bedroom, two bath loft apartment
- A cooking class and dinner at a local restaurant
- All room-related taxes
- \$1,000 gift card for airfare



DISCOVER LAKE TAHOE'S PRISTINE BEAUTY

Nestled within the Sierra Mountain Range, the stunning locale of this four-diamond resort is the ideal setting for your next ski vacation! Tempt Lady Luck in the Casino, and after a day on the slopes ease tired muscles with a deep-tissue massage in the world-class spa, savor delicious cuisine, and relax in inviting guestrooms, luxurious amenities and services for an incomparable mountain escape.

DETAILS:

- 5 days/4 nights accommodations at the Hyatt Regency Lake Tahoe Resort, Spa and Casino
- Room-related taxes
- \$600 Hyatt gift card
- Free concierge reservation service
- \$1,000 gift card for airfare

THE RULES:

- Contest open to all NAA members, affiliates, and their spouses*
- \$25 per entry (Personal contributions only, no corporate contributions!)
- Last day to enter is *Thursday, March 31, 2022*
- Winner will be *announced on April 1*

* NAA Employees, NAAPAC Trustees and members of the NAA Board of Directors (or their spouses) are not eligible for the contest.

Enter at:

www.naahq.org/advocacy/naapac

TRIP TERMS AND CONDITIONS:
Travel package is non-refundable and subject to availability. Certificates/gift cards cannot be replaced. Passport required for travel outside the U.S. A minimum 30-day advance reservation is required. Travel is valid for 12 months from date of issue. American Express Gift Card may be used toward purchases within the U.S. only.

NAAPAC DISCLAIMERS:
NAAPAC is the political action committee of the National Apartment Association. Only members of the NAA and its affiliates may contribute to NAAPAC. Contributions to NAAPAC are used in connection with federal elections. NAAPAC contributions are not tax deductible. All contributions to NAAPAC are voluntary. You may refuse to contribute without reprisal. Federal law requires political committees to report the name, mailing address, occupation, and name of employer for each individual whose contributions aggregate in excess of \$200 in a calendar year. No purchase is required to enter. To enter without purchase, please send a 3x5 index card with your name, mailing address, phone number and email address to NAAPAC Sweepstakes, 4300 Wilson Blvd., Ste. 800, Arlington, VA 22203. Void where prohibited.

WELCOME NEW MEMBERS:



MEMBERS BUY FROM MEMBERS



Membership Meeting

Chicken-N-Pickle
 March 17, 2022
 3:00 PM - 4:30 PM

Social Media: The New Way to Grow Your Brand

Presented by:

Fayola Oyatayo, CEO of Fay Solutions | Talk Show Host



Sponsored by:

COX | Communities



THE STAR OF EXCELLENCE 2022 AWARDS

Update your calendars! The 2022 Star of Excellence has been postponed to April 23rd. Tickets are available and can be reserved by visiting MyAAGW.com.



THE GRAPE VINE

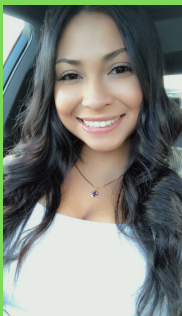
If you have exciting news you'd like to share in our newsletter, please email admin@myaagw.com.



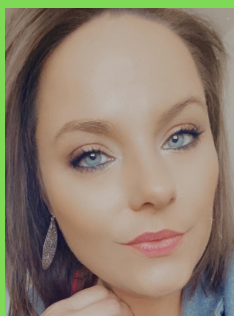
Quarters at Cambridge has been recognized among the Elite 1% properties in the nation with the best online reputation for 2021 by J Turner Research. Of the 128,000 properties J Turner monitors, 1,564 properties earned the Elite 1% ORA® Power Ranking in 2021. To be eligible the minimum ORA® score is 94. Quarters at Cambridge scored 95 and ranked number 484. We are the only Wichita apartment community to receive this award and only 10 properties in the state of Kansas!



Bri Fouquet was promoted as the Community Manager for Ridgeport Apartments and Redbud Townhomes with Monarch Investment and Management Group.



Mela Stepp was promoted to Assistant Community Manager at Twin Lakes Apartments with Weigand Omega Management.



Kelly Blair was promoted to Property Manager at Morgan's Landing with Monarch Investment and Management Group.



Haley Nichols was promoted to Community Manager for Harvester Lofts with Weigand Omega Management.

TRIVIA

Answers from February Newsletter:

- In what year did the AAGW sponsor the first Round for Red Golf Tournament?
2004
- What year was AAGW founded?
1984
- How much money has the AAGW donated from Round for Red/Hope Golf Tournaments?
 a. \$118,000 b. \$272,000 c. **\$355,000**

FAIR HOUSING

Out of the Box

April 28, 2022
 11:45 AM - 2:45 PM

Cessna Activity Center
 2744 S. George Washington Blvd
 Wichita, KS



Robynn Haydock, CAM
 High Road Education and Consulting



AAGW's Run for the Roses

Suppliers Council Trade Show

Thursday, April 28, 2022
 3:00 PM to 6:00 PM
 Cessna Activities Center
 2744 George Washington Blvd
 (Oliver & George Washington)

A Kentucky Derby Themed Event



- BOARD OF DIRECTORS MEETING**
 - MARCH 3, 2022 11:30-1PM @ AAGW OFFICE
- SUPPLIERS COUNCIL MEETING**
 - MARCH 16, 2022 12 -1PM @ AAGW OFFICE
- MEMBERSHIP MEETING**
 - MARCH 17, 2022 3PM-4:30PM @ CHICKEN N PICKLE
- BOARD OF DIRECTORS MEETING**
 - APRIL 14, 2022 11:30-1PM @ AAGW OFFICE
- SUPPLIERS COUNCIL MEETING**
 - APRIL 20, 2022 12 -1PM @ AAGW OFFICE
- STAR OF EXCELLENCE AWARDS**
 - APRIL 23, 2022 5-9PM @ KANSAS STAR EVENT CENTER
- FAIR HOUSING- OUT OF THE BOX**
 - APRIL 28, 2022 11:45-2:45PM @ CESSNA ACTIVITY CENTER
- SUPPLIERS COUNCIL TRADE SHOW**
 - APRIL 28, 2022 3-6PM @ CESSNA ACTIVITY CENTER

COMMUNITY AMBASSADORS

KATHERINE SANNEMAN

Agency Owner
 Farmers Insurance
 (316)265-2220
 KSanneman@FarmersAgent.com

GERON SMITH

Vice President
 Precision Construction Services
 (316)260-9200
 Gerone@Precision-ICT.com

PEGGY AVILEZ

Regional Manager
 American Pest Management
 (316)262-7378
 PAvilez@AmericanPestOnline.com

DAVID PFAFF

Business Development
 Belfor Property Restoration
 (316)469-1894
 David.Pfaff@Us.Belfor.com

ERIC FAHNESTOCK

Franchisee
 OxiFresh Carpet Cleaning
 (316)655-4303
 Eric@OxiFreshKs.com

LOU CALKINS

ARD Sales
 Metro Appliances and More
 (316)761-6176
 Louella.C@Metro1974.com

KIM ROBERTSON

Account Manager
 Design Source Flooring
 (316)519-9080
 KRobertson@DSFlooring.com

JESSE BARG

Owner
 True Blue Crew
 (316)990-8236
 Support@TrueBlueCrewllc.com

STEPHANIE MARNELL

Operations Manager
 Apprentice Personnel
 (316)267-4781
 Stephanie.Marnell@ApprenticePersonnel.com

JEREMY PARKS

Business Development
 Furniture Options
 (316)670-9722
 JParks@FurnitureOptions.com

GIANNA WILLIAMS

Owner
 Flamingo Ink
 (316)665-6544
 Gianna@FlamingoInk.com

GETTING TO KNOW LEAH THIBAUT!

By: Cody Stout, Maxus Properties

Our Member of the Month for this month is Leah Thibault, of Maxus Properties. This "Powerhouse" of a lady is always on the go! She is not only a Regional Manager for Maxus, with properties in several states, she has also been very active in many other areas over the years. She has been an active member of the AAGW for over 15 years, represented the AAGW as the Regional Vice President for Region 5 for NAA, has served as the AAGW Association President three times, and has served on just about every committee the AAGW has offered.

Leah credits her top-notch involvement to her desire to improve both personally and professionally and to give back to the community. She is always seeking ways to do this and says it keeps her motivated. When asked why she chooses the AAGW, her response is "It is a great way to be a part of your industry in a different way other than just being an employee of your business. This deepens your relationships with people that do the same things as you, but also gives you so many resources that are invaluable. Plus, we should all continue to learn every day to be the leaders and coaches that our teams need."

Thank you, Leah, for your dedication and support to the AAGW. We appreciate you!



COX | Communities
Bringing us closer

David Geier
MDU Account Manager
Cox Signature Communities
901 S. George Washington Blvd
Wichita, KS 67211
Cell: 316.285.4693
david.geier@cox.com
www.cox.com

Tiffany Kennedy
MDU Account Manager
Cox Signature Communities
901 S. George Washington Blvd
Wichita, KS 67211
Cell: 316.932.3591
tiffany.kennedy@cox.com
www.cox.com

FLAMINGO ink 

360 E William, Suite 101 | Wichita, KS 67202
T: 316-665-6544 | E: orders@flamingoink.com
flamingoink.com



COPY & PRINT | FLIERS | BUSINESS CARDS | PRESENTATIONS | +MORE

BELFOR 

PROPERTY RESTORATION



Dave Pfaff
Business Development
Cell: 316.469.1894
david.pfaff@us.belfor.com

RESTORING MORE THAN PROPERTY



Get smart about your coverage!

316.265.2220

KATHERINE SANNEMAN
Your Local Farmers Agent
3555 E DOUGLAS AVE STE 600
WICHITA, KS 67218
KSANNEMAN@FARMERSAGENT.COM



furniture
Options

FURNITURE RENTAL & SUBSCRIPTIONS
FOR PEOPLE ON THE MOVE

Sofas • Chairs • Tables • Dining
Accessories • Beds • Electronics



FurnitureOptions.com
316.263.5750

Esther Mills
General Manager

316-665-6575

Esther@Realtyjobs.com
www.Realtyjobs.com

Real Estate Personnel
4601 Douglas Ave, Suite 346
Wichita, KS 67218

METRO
APPLIANCES & MORE

ARIC HANNA
ARD Outside Sales
Cell: 316-833-0710
Aric.H@Metro1974.com

LOU CALKINS
ARD Outside Sales
Cell: 316-761-6176
Louella.C@Metro1974.com

3545 N. Hillside
Wichita, KS 67219
Phone: 316-941-4040
Fax: 316-941-4050

TULSA • OKLAHOMA CITY • LOWELL • LITTLE ROCK
JONESBORO • JOPLIN • SPRINGFIELD • WICHITA

WELCOME TO LIFE ... WITHOUT PESTS!

AMERICAN PEST MANAGEMENT INC.

PEGGY AVILEZ
Wichita Regional Manager
wichitamanager@americanpestonline.com
1527 S Washington, | Wichita, KS 67211
PHONE (316) 262-7378 CELL (316) 644-4946
WWW.AMERICANPESTONLINE.COM

DSF
DESIGN SOURCE
FLOORING

MultiFamily Flooring Specialist

Kim Robertson, Account Manager
316.519.9080 krobertson@dsfflooring.com

LEASE LOCATORS
LLC
www.LeaseLocatorsLLC.com
Your Leasing Partner

 **APPRENTICE PERSONNEL**

Stephanie Marnell
Operations Manager

316-267-4781
Fax 316-267-4790
stephanie.marnell@apprenticepersonnel.com

328 S. Laura
Wichita, KS 67211
www.apprenticepersonnel.com

The help you need...  ...Guaranteed

 **SHERWIN-WILLIAMS**
The Americas Group

Tom Stewart
Flooring Specialist
thomas.a.stewart@sherwin.com
316.655.1820

Ashley Touchatt
Paint Specialist
ashley.l.touchatt@sherwin.com
316.243.7783

4040 West Central
Wichita, KS 67212
www.sherwin.com