



AAGW

APARTMENT ASSOCIATION OF GREATER WICHITA



**Commercial Laundry
Sales & Service**
Equipment • Parts • Service • Chemicals



Did you know that Commercial Laundry Sales & Service, (CLS&S), has products, services, and information that can help you:

- * Provide more service to your tenants? AND
- * Make more money?

How they do that, is by creating solutions to your needs. They are adamant when they say, “We have a philosophy that we will never have a cookie-cutter approach to our customers. We help create solutions!”

CLS&S carries Speed Queen and Continental-Girbau. If you are considering adding or updating a laundry facility, we can ensure that you get the right mix of equipment based on your tenant’s needs. Major benefits of replacing old laundry equipment are: significant utility savings; lower repair costs; customers prefer newer machines so use them more; all of which equate to a better bottom line for your community.

Many apartment communities have a 7-10 year, laundry equipment lease. Many of these leases automatically renew unless cancelled well before their expiration date. Do yourself a favor and check to see if you are leasing or if you own your laundry equipment. CLS&S can help you enjoy the freedom that comes from owning your own equipment, allowing you to keep more the proceeds. There are financing options available to qualified purchasers.

One way CLS&S suggests you avoid costly repairs is to do regular preventative maintenance. CLS&S also helps you diagnose problems over the phone so you know what might be wrong, and whether you can fix the problem, or need a service call. If you do need a technician CLS&S provides prompt response to service needs, and has a large parts inventory so your machines will not be down long.

Donna Robb, is the new contact for AAGW members. You can reach her at (316) 267-6650 or (800) 864-4593. She would be happy to help you. Please take a moment to introduce yourself to her at the upcoming meetings.

Member of the Month

By: Rhiannon Giffin, Key Management

Not only would we like to introduce Anne Hill as Member of the Month, we would also like to introduce her as our 2017-18 Association President. Anne has been in the apartment industry for nearly 18 years after spending the 14 years before that as a stay at home mom.

Anne chose this industry as it had lots of training available with room to advance and grow, which she certainly has done. What she likes most is, “Meeting interesting people and the chance to wear many hats ranging from accountant to counselor, and from salesperson to mentor.” She has also found personal growth in overcoming her fears of committing to the bigger picture by becoming heavily involved with the Association while continuing to balance work and family.

Anne’s most rewarding experience since being involved in the AAGW is being part of the Give Back Event each December. “It feels good to be part of an association that does so much for it’s community.” What she would like to see most during her tenure as President is increased involvement in events and increased membership in the association. “The bigger our association gets, the more we can help the community and help our members.”



Anne Hill
Monarch Investment & Real Estate Group



MONTHLY MEETING



September 21st: Assistance Animals: What's the Scoop?

11:30-1:00 pm \$25 Members/\$45 Non-Members

Join us for lunch to learn about the latest regulations and civil rights laws when it comes to service animals and emotional support animals in the apartment industry.



September 28th: Fair Housing Class

9:00-12:00 pm \$79 Members/\$99 Non-Members

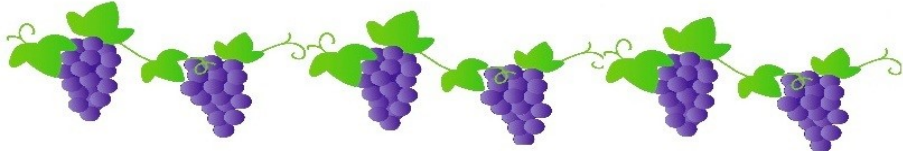
What is the latest in ever-changing world of Fair Housing? Come gain a more clear understanding of the anti-discrimination legislation in place along with what may be coming in the near future.



September 28th: Uber Closing Leasing Class

1:30-4:30 pm \$39 Members/\$59 Non-Members

Learn tips on how to improve the closing ratios of both yourself and your staff while increasing the occupancy on your property. **Class will be offered for free with each Fair Housing registration!**



The Grapevine

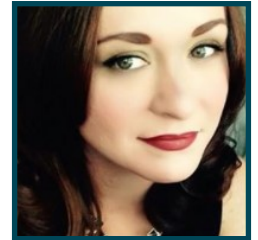
David Pfaff-Indian Hills Ace Hardware

David and the Indian Hills Ace Hardware team have joined the Westlake family of Ace stores. Their location will not change and they feel as if the move will better serve their customer base.



Joanna Price-East Hampton Estates

East Hampton Estates welcomed Joanna as their new property manager last month. Joanna comes in with a lot of experience and both sides are excited about the opportunity. Good luck, Joanna!



Mark May-RentPath

The AAGW would like to say goodbye to long-time member, volunteer, and friend Mark May who has found a new career opportunity. You will be missed!



Annual Meeting: Jared Estes - Fire Back

Members celebrated the installation of the 2017-18 Board of Directors at the Annual Meeting held on August 18th at the Holiday Inn. Those in attendance were also treated to speaker and native Kansan, Jared Estes, who gave a very powerful presentation on triumph through tragedy. Thank you to meeting sponsor Indian Hills Ace Hardware.



UPCOMING EVENTS

Register Today at myaagw.com!

Friday, September 8th, 9:00 am - 1 pm
The Douglas
Board of Directors Meeting-Board Retreat

Wednesday, September 20th, Noon - 1 pm
Furniture Options
Suppliers Council Meeting

Wednesday, September 20th-September 26th, 9am - 5 pm
Build U
Certified Apartment Manager Course

Thursday, September 21st, 11:30 am - 1 pm
Abode Venue
Monthly Membership Meeting: Assistance Animals

Thursday, September 28th, 9:00 am - Noon
Build U
Fair Housing Class

Thursday, September 28th, 1:30 pm - 4:30 pm
Build U
Uber Closing Class



Emily Telfer
MDU ACCOUNT MANAGER

901 S. George Washington Blvd.
Wichita, KS. 67211
316-260-7328 tel
316-249-9532 cell
emily.telfer@cox.com



ACUTE
CONSTRUCTION SERVICES

Danny Telford

1514 S. Mosley Wichita, KS 67211
(316)201-6264 | Danny@ACUTEconstruction-ICT.com | <https://www.facebook.com/ACUTEconstruction/>



CURSTIN JINKENS
ESTIMATOR
PAVING MAINTENANCE

curstin.jinkens@cornejocorp.com

2060 E. TULSA
WICHITA, KS 67216
316-522-5100 OFFICE
316-522-8187 FAX
316-617-4759 CELL



Please help us welcome our new members!

Sunnydale Pointe Apartments

LoveCo Carpet Restoration

Watercress Apartments

Player Piano Lofts

Rock Island Lofts

Emery Gardens Apartments

Precision Concrete Cutting Midwest

Tats Shepherd State Farm

YOUR AAGW AMBASSADORS

GERON SMITH • General Manager
Phone: (316) 761-0057
GSmith@actcat.com
ADVANCE CATASTROPHE TECHNOLOGIES

BETTY WARES • ARD Sales
Phone: (316) 941-4040
B.Wares@metroappliancesandmore.com
METRO APPLIANCES & MORE

ERIC FAHNESTOCK • Franchisee
Phone: (316) 655-4303
Eric@OxiFreshKS.com
OXI FRESH CARPET CLEANING

TARYN HALL • Office Manager
Phone: (316) 201-6264
Taryn@ACUTEconstruction-ict.com
ACUTE CONSTRUCTION SERVICES, INC.

TOM STEWART • Sales Representative
Phone: (316) 942-0188
Sherwin.ict@gmail.com
SHERWIN WILLIAMS

JEREMY PARKS • Business Development
Phone: (316) 670-9722
JParks@FurnitureOptions.com
FURNITURE OPTIONS

NICHOLAS HOWELL • Commercial Development Manager
Phone: (316) 927-2233
nick@rhodenroofing.com
RHODEN ROOFING

DAVID PFAFF • Commercial Sales Manager
Phone: (316) 259-4876
David@IndianHillsHardware.com
INDIAN HILLS ACE HARDWARE

JESSE BARG • Owner
Phone: (316) 990-8236
support@truebluecrewllc.com
TRUE BLUE CREW

CHRIS RICKERSON • President
Phone: (316) 202-2082
chris@wichtastaffing.com
ELITE STAFFING SOLUTIONS



Text Harvey to 90999
to make a \$10.00 donation

PRECISION CONSTRUCTION SERVICES

(O) 316.260.9200
 (C) 316.518.1404
 (F) 316.260.9204
 preston@precision-ict.com
 precision-ict.com

Preston Fanning
 Owner

BELFOR PROPERTY RESTORATION

24-7 EMERGENCY HOTLINE
 800.856.3333 | 800.800.BELFOR

RESTORING MORE THAN PROPERTY

Sam M. Shaffer

100 West 61st Street North
 Suite 1
 Wichita, KS 67219
 PHONE: 316.260.4227
 FAX: 316.260.4254
 CELL: 316.213.3986
 sam.m.shaffer@us.belfor.com
 www.belforusa.com

REP REAL ESTATE PERSONNEL

Staffing the Finest Companies Since 1993

Ph: (316) 665-6575
 Fax: (316) 223-1038
 Esther@RealtyJobs.com
 www.RealtyJobs.com
 300 W. Douglas Ave. - Suite 122
 Wichita, KS 67202

Esther Mills
 General Manager

www.RealtyJobs.com

FURNITURE OPTIONS

An Employee Owned Company

Renting furniture, housewares & electronics within one business day.
 1336 E. Douglas | 316.263.5750 | FurnitureOptions.com

WESTLAKE COMMERCIAL

Service Passion Respect Integrity Teamwork Excellence

David Pfaff
 Business Development Manager
 dpfaff@westlakehardware.com

Wichita
 316.259.4876

ACT Putting your world back together!

Advance Catastrophe Technologies, Inc.



www.ineedACT.com
 24/7 Emergency Response >>> 316-262-9992



APAC-Kansas, Inc., Shears Division
 Wichita Branch
 3511 S West St
 Wichita, KS 67217

DANIEL PLAKE
 ESTIMATOR
 P (316) 524-5200
 F (316) 524-3651
 DANIEL.PLAKE@APAC.COM

ASPHALT AND CONCRETE MAINTENANCE CONTRACTOR

Washer Specialties

Cecil Richardson, Salesman
 224 Indiana • Wichita, KS 67214
 cecilrich7@gmail.com • www.wsconet.com
 Phone: 1-316-263-8179 Toll-Free: 1-800-835-1010

METRO APPLIANCES & MORE

BETTY WARES
 ARD SALES

b.wares@metroappliancesandmore.com
 metroappliancesandmore.com

3545 N. Hillside
 Wichita, KS 67219
 316-941-4040
 800-536-5030
 Fax: 316-941-4050
 Cell: 316-461-7472

TULSA • OKLAHOMA CITY • EDMOND • WICHITA • JOPLIN
 SPRINGFIELD • LITTLE ROCK • SPRINGDALE • JONESBORO

CLS&S

Commercial Laundry Sales & Service
 Equipment • Parts • Service • Chemicals

1228 S. Santa Fe • Wichita, KS 67211 • (316) 267-6650

FERGUSON Facilities Supply

Emily Leis
 emily.leis@ferguson.com
 (316) 670-4707 / (888) 334-0004



OFFICE (316) 943-1400
 FAX (918) 254-2970
 CELL (316) 250-3760
 wichita@cbcarpets.com

C&B CARPETS & SERVICES, INC.
 2437 S. MERIDIAN
 WICHITA, KS 67217

TOMMY DEMPSEY

FLOOR COVERINGS